



**California Department of
Forestry and Fire Protection**



Wildfire's Potential to Change Napa County's Wildland

Dave Passovoy

CAL FIRE Fire and Resource Assessment Program

<http://frap.fire.ca.gov>



Napa County's Fire Ecology & Fire Risk

Define "Fire Regime"

Vegetation Types

Natural Fire Regimes

Current Conditions

Potential Changes



California Department of Forestry and Fire Protection



www.sky-fire.tv/.../fire_starter.jpg



USGS
U.S. GEOLOGICAL SURVEY

Gary Sullivan



Factors Affecting Vegetation

Fire Regime

Climate

Soils

Insects

Herbivores

Terrain





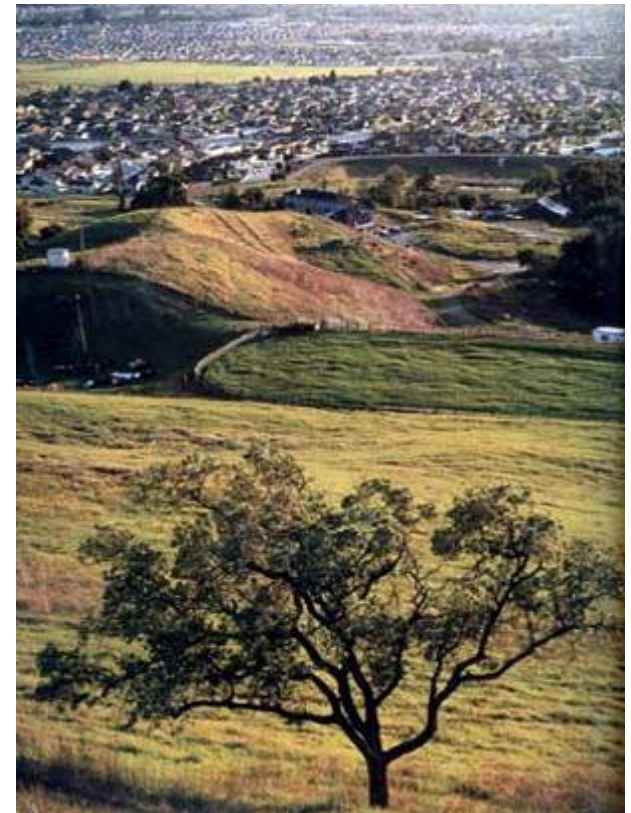
California Department of Forestry and Fire Protection



The cost of fighting
wildfires

The ability to have
clean air

How and where we
recreate





If we can understand the fire regime of where we live, we can begin to understand fire's role as an agent of change and its risk.





Natural Fire Regime defined

- Seasonality
- Severity
- Intensity
- Frequency
- Type





Natural Fire Regime

Season





Natural Fire Regime

Intensity

- Energy released/ fire front





Natural Fire Regime

Severity

- Impact that a fire has on an ecosystem





Natural Fire Regime

Frequency

- How often fires occur





Fire Regime

Type

- Ground
- Surface
- Canopy/
Stand
Replacing





Napa's Common Vegetation Types

Oak Woodland
Chaparral
Grassland
Coniferous
Forest





Napa's Common Vegetation Types & Fire Regimes

Oak Woodland

Season – summer
& /or fall

Intensity – Low & Low-Moderate

Severity – Low & Low-Moderate

Frequency – Short

Type - Surface





Napa's Common Vegetation Types & Fire Regimes

Chaparral

Season – summer & /or fall

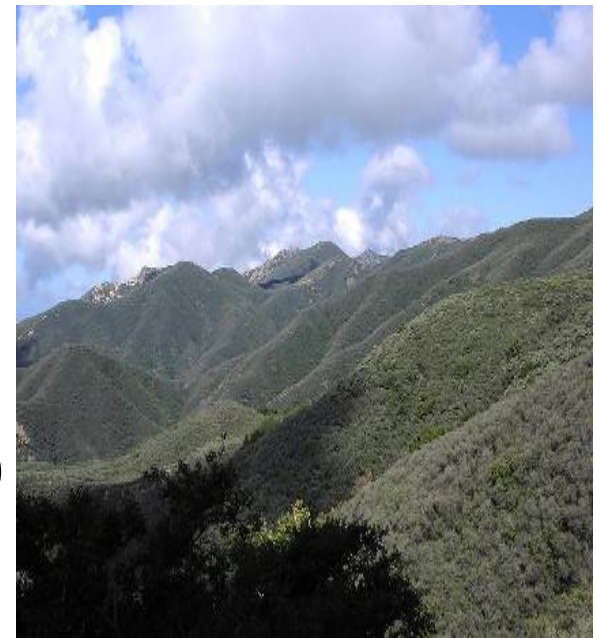
Intensity -High

Severity – High

Frequency – Medium (10-35yrs)

possibly longer

Type - Canopy





Napa's Common Vegetation Types & Fire Regimes

Grasslands

Season – summer
and /or fall

Intensity - Low-Moderate

Severity – High

Frequency – Short

Type - Canopy





Napa's Common Vegetation Types & Fire Regimes

Coniferous Forest

Season – Summer and /or fall

Intensity – 80% Low/ 20% Mixed

Severity – Low/ Mixed

Frequency – Short/Medium

Type – Surface/ Mixed





Current Conditions

Oak Woodlands – lack of fire is negatively affecting ecosystem

Chaparral - lack of burning

Grassland - lack of burning

Coniferous Forest - lack of fire is negatively affecting ecosystem



Potential for Change

Oak Woodlands





Potential for Change

Chaparral





Potential for Change

Grassland





Potential for Change

Coniferous Forest





Wildfire can or already has affected (via
vegetation change):

Biodiversity

Clean water

Clean air

Recreation

Personal Safety

Homes/ Development



California Department of Forestry and Fire Protection



Thanks to :

Dave Sapsis

Lauren McNees

Lisa Hartman

Carl Palmer

Tiffany Meyers

Kelly Larvie