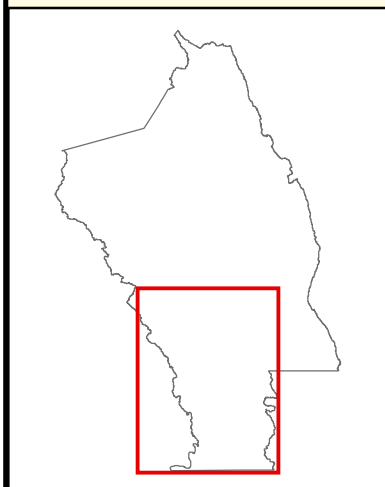
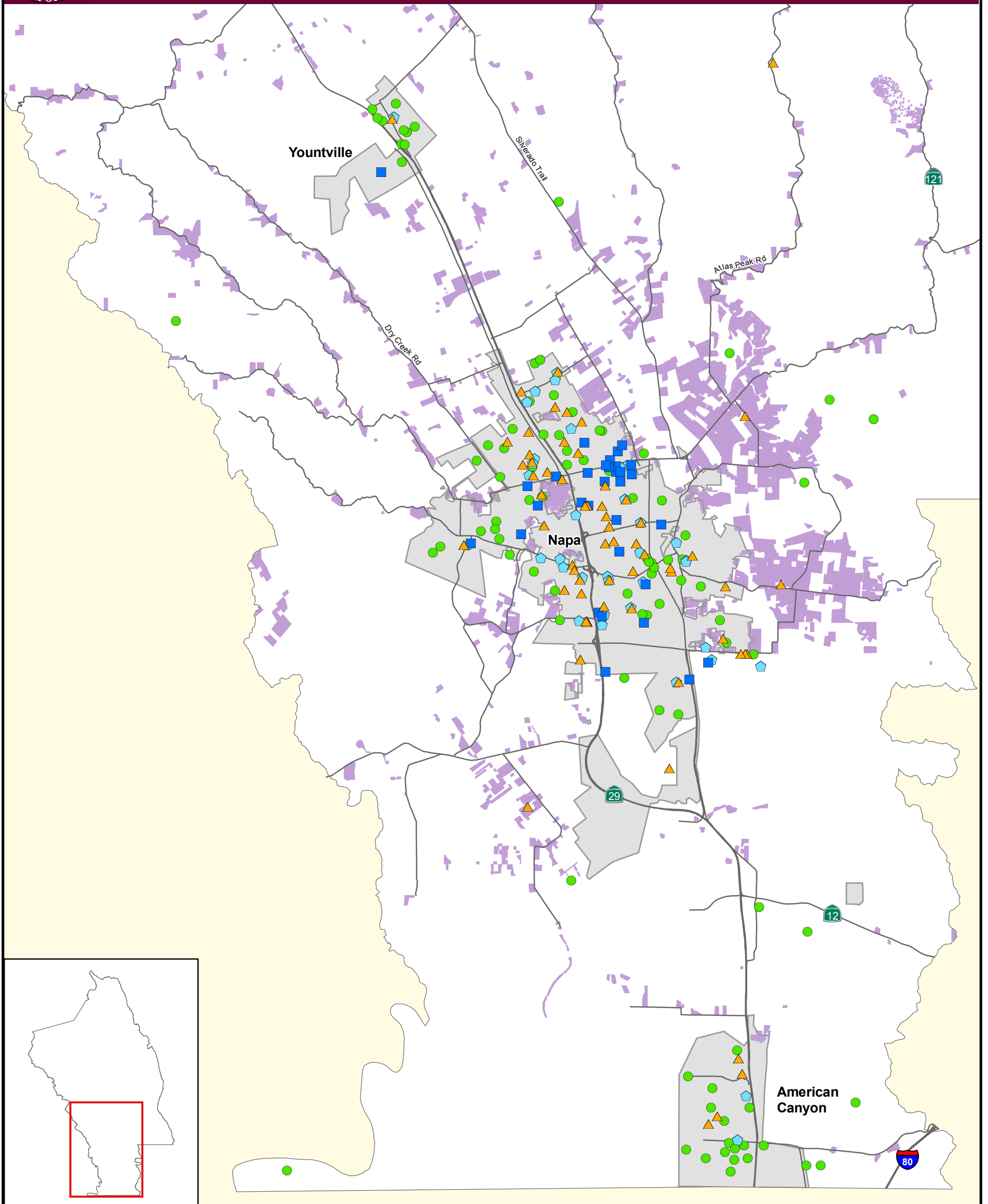











Napa County Baseline Data Report



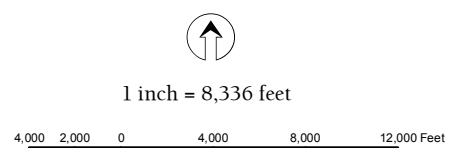
LEGEND

- | | |
|---|--|
|  Hospitals or Healthcare Facilities and Assisted Living Facilities |  Residences |
|  Parks, Wildlife Areas and Recreation Areas |  Population Centers |
|  Schools |  Major Roads |
|  Child Care Centers | |

 Jones & Stokes | EDAW

Sensitive Receptors and Population Centers

Southern Napa County



Horizontal Datum: NAD 83,
CA State Plane Coordinates, Zone II, feet
Source: Napa County, 2004; EDAW, 2004;
Jones & Stokes 2005

Disclaimer: This map was prepared for informational purposes only. No liability is assumed for the accuracy of the data delineated hereon.