

Brownfields Project

Site Assessments and Area-wide Planning

Stephen McCord, MEI
Atley Keller, LGC

WICC Meeting
24 January 2019

What is a “Brownfield”?

- “... real property, the expansion, redevelopment, or reuse of which may be complicated by the presence or potential presence of hazardous substances, pollutants, contaminants, controlled substances, petroleum or petroleum products, or is **mine-scarred land**.”
- Liability protection, funds & technical assistance (not enforcement) to assess and clean up sites

Small Business Liability Relief and Brownfields Revitalization Act (Jan. **2002**);
2018 BUILD Act amendments

Key Program Points

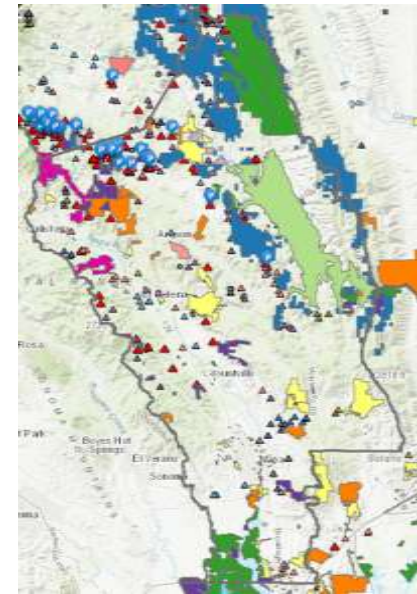
- Assessment & cleanup grants available
- Participation / access is voluntary
- Assessments are free
- Results are public (but not publicized)



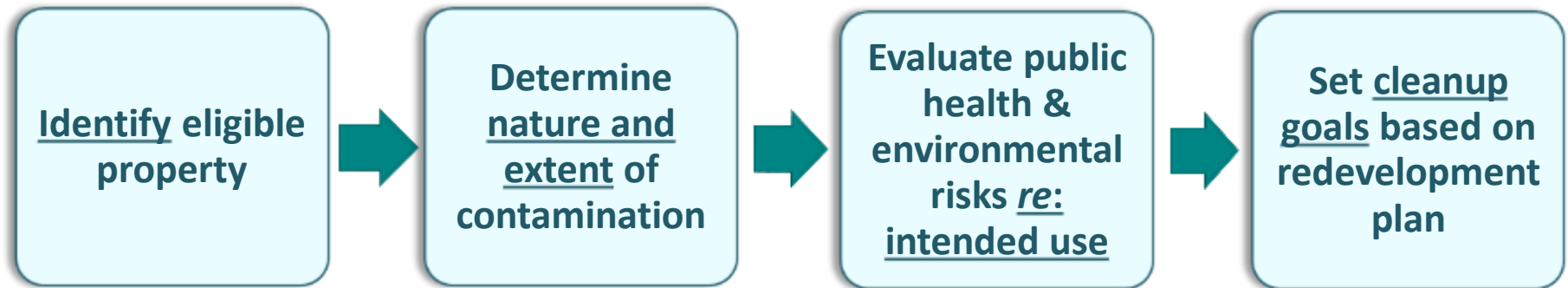
Program Eligibility

- ✗ Listed or proposed Superfund sites;
- ✗ Subject court orders/ decrees under CERCLA;
- ✗ Controlled by US government*
- ✓ Private land (to be transferred)
- ✓ Tribal land
- ✓ State/local gov't land

* Unless held in trust for an Indian Tribe



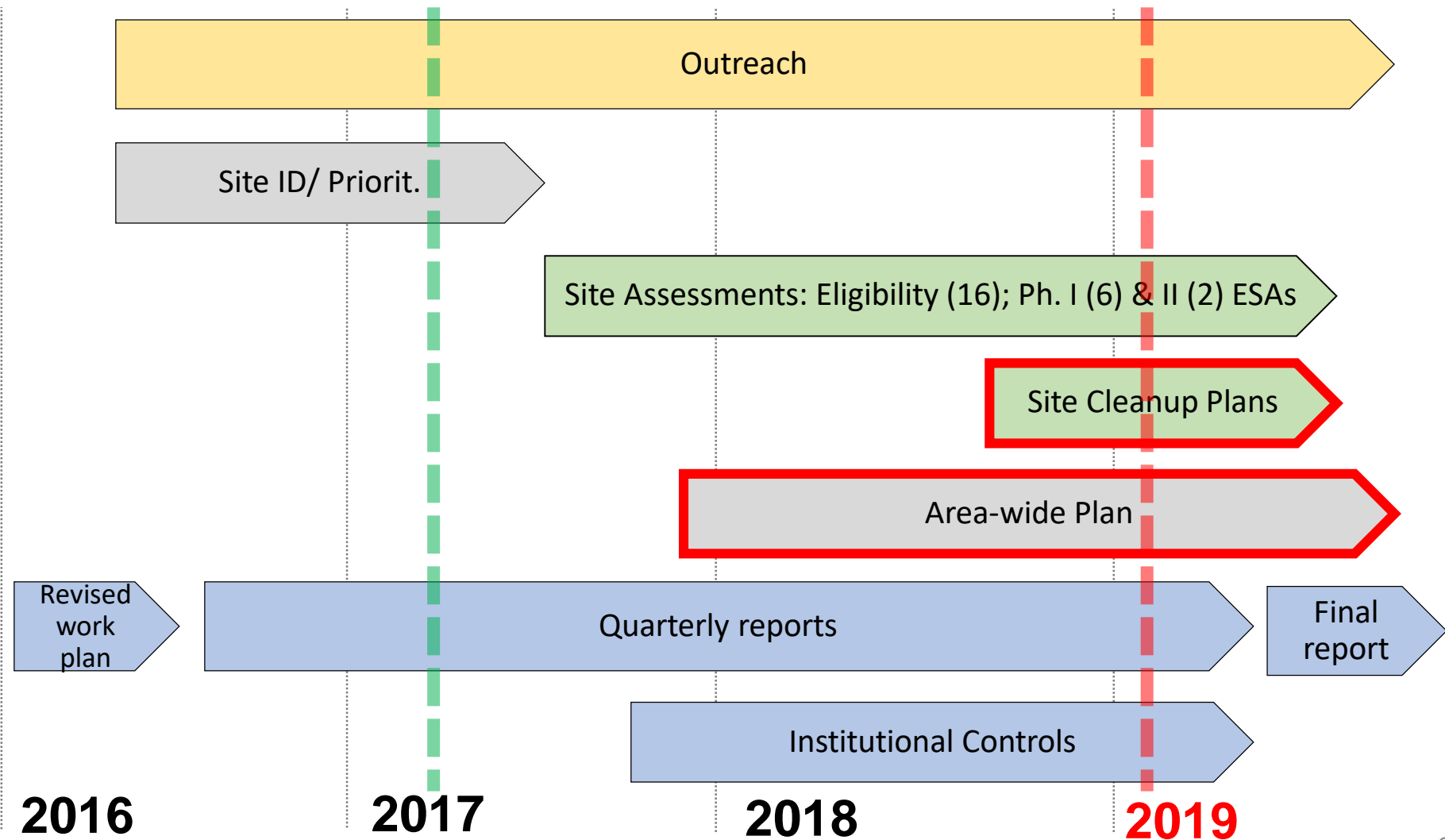
Assessment Process:



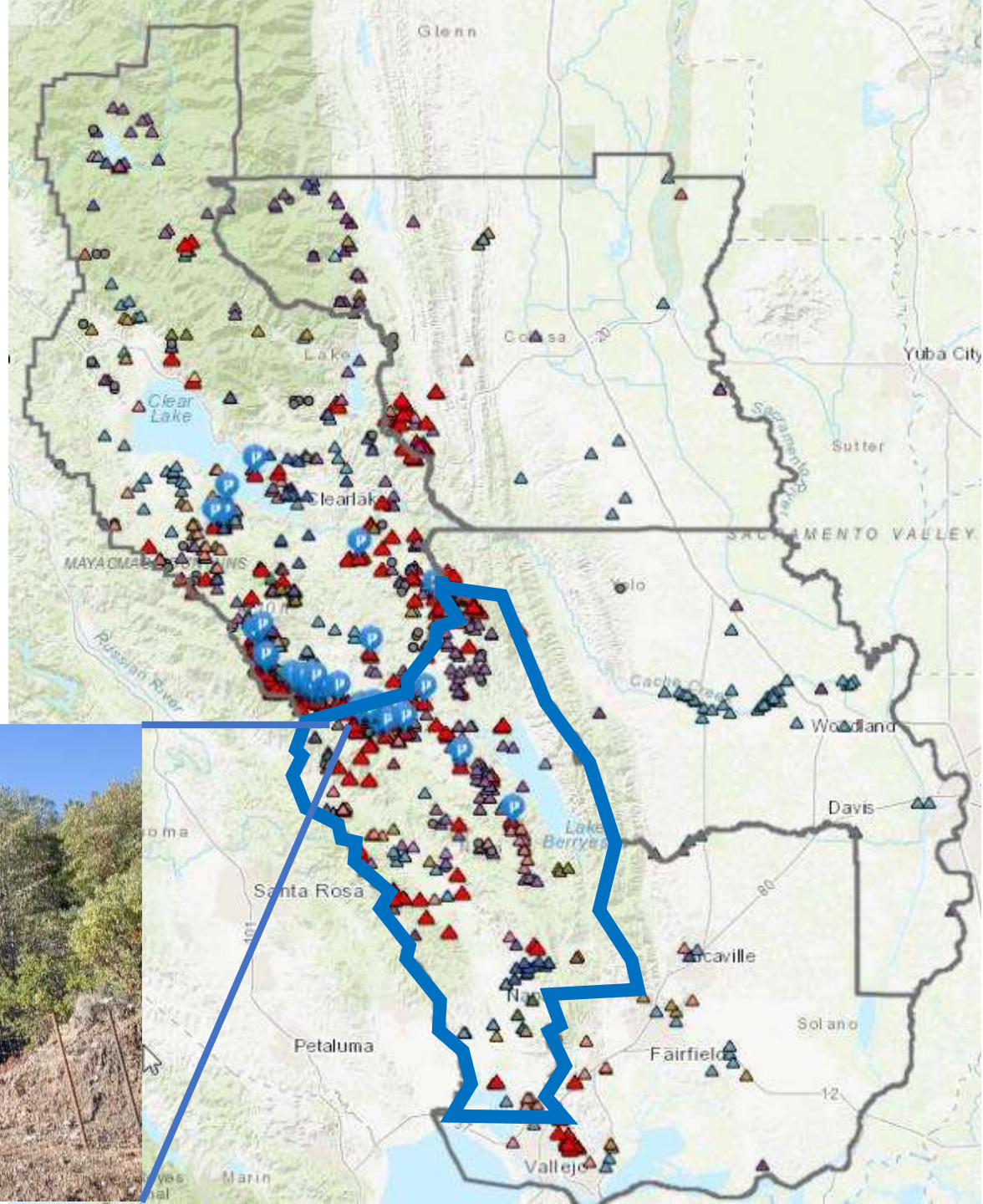
Clean-up & Reuse Process:

1. Transfer parcel to public ownership
2. Implement the remedy & reuse plan

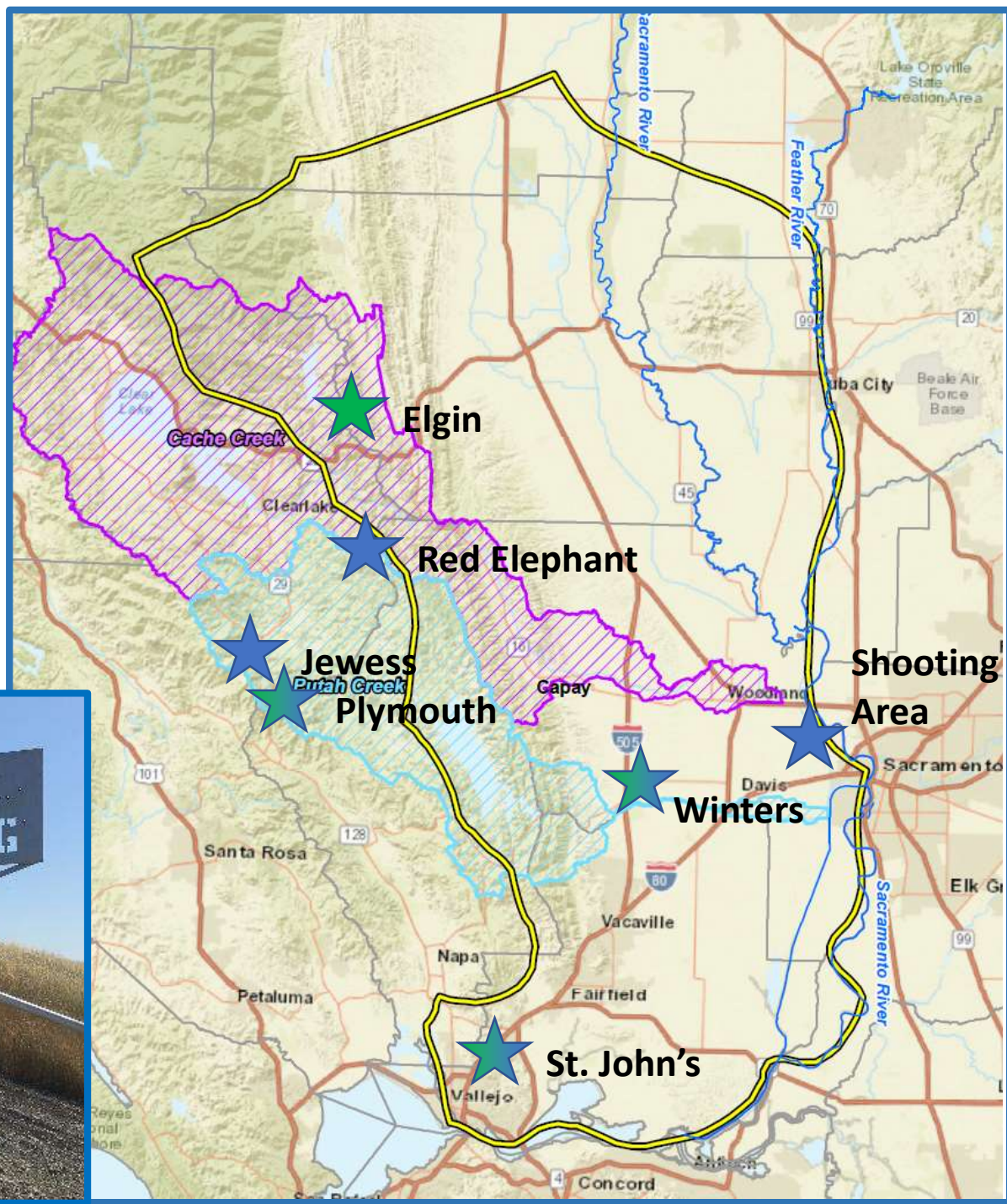
What we've done so far...



Many Mines in Napa County



*Project Sites
Assessed;
now doing
Clean-up
Plans*



Primary Challenges

- Landowner cooperation (multiple, suspicious, absent)
- Other priorities (drought, flood, fire)
- Diffuse, legacy contamination
- No promises post-assessment



- Lot\$ of potential funding
- Fires cleared the way (and encourages funding)
- Broad interest among municipalities, districts, regulators, and land managers
- Capable agency staff & contractors
- Rich history

What resources (museums, books, people, etc.) should be reviewed?



Upcoming Activities

- Phase II ESA for **Winters WWTP** (Yolo)
- Cleanup Plan for **Elgin Mine** (Colusa)
- Cleanup Plan for **Plymouth Mine**
- Phase II ESA & Cleanup Plan for **St. John's Mine** (Solano)
- **Finalize Area-Wide Plan**



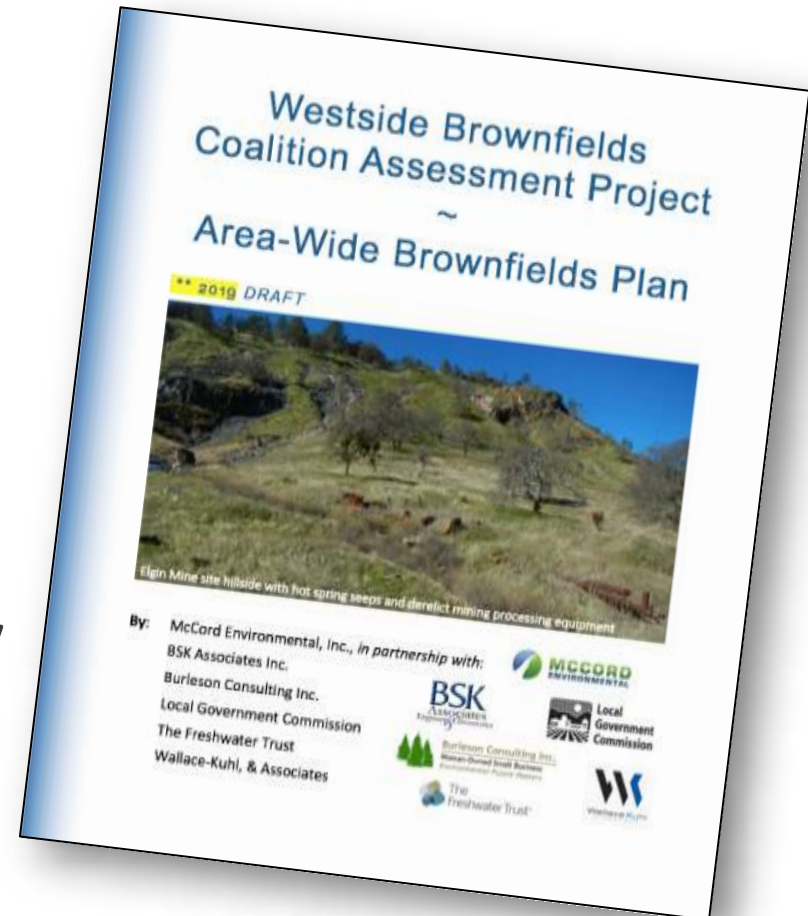
Elgin Mine

Area-Wide Plan Objectives

- Protect public health & environment
- Support local economy
- Reflect community's vision

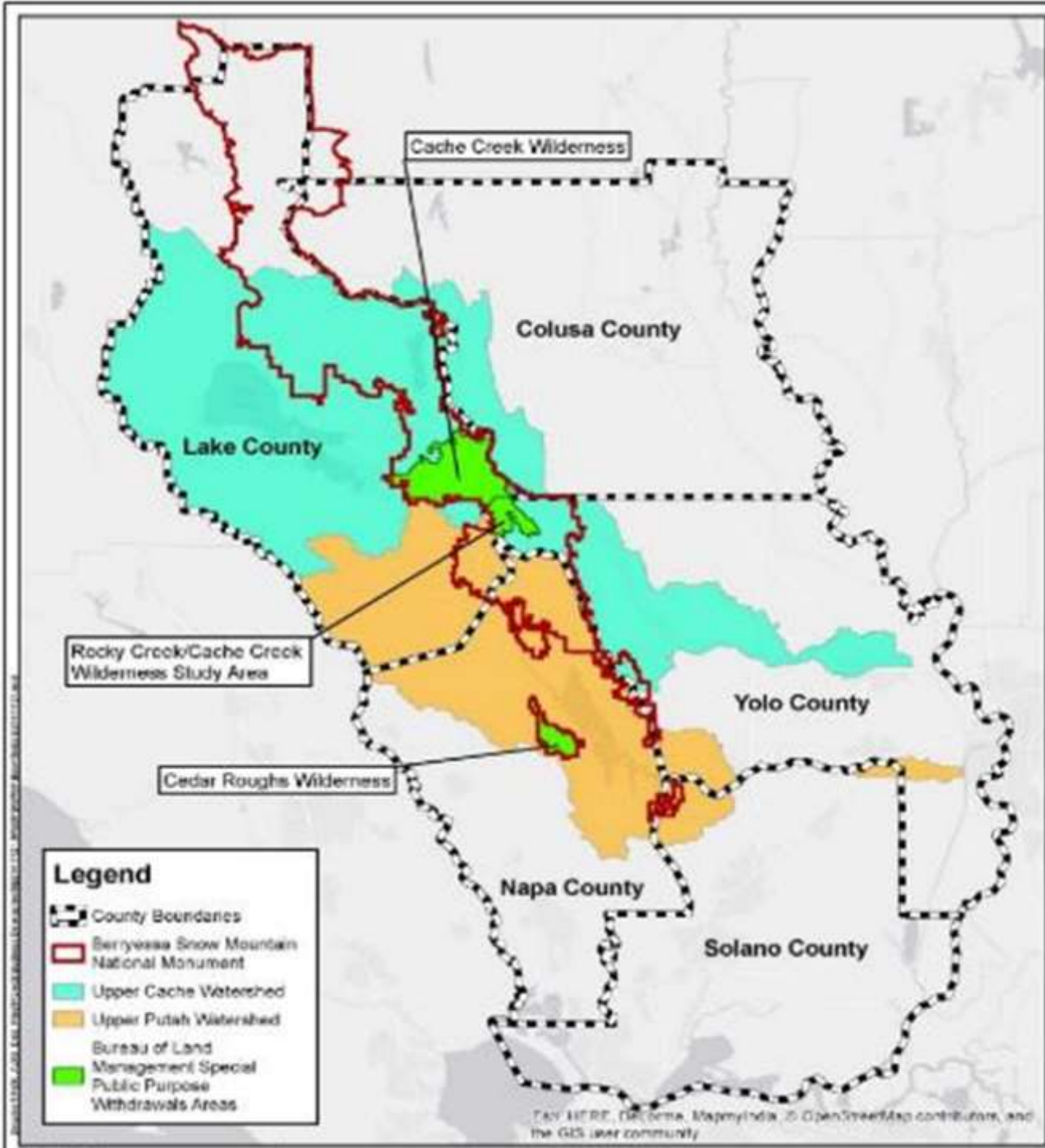


- I. Project Background
- II. Community Engagement
- III. Existing Conditions
- IV. Assessment Activities
- V. Regional Priorities**
- VI. Implementation Strategy**
- VII. Appendices



Regional Context & Priorities

What other areas & features should be considered for prioritizing sites to assess and clean?



Looking for Feedback

- What is most important in YOUR community?
- How can we make sure the plan is useful to YOU?
- Any upcoming projects/needs to incorporate?
- Volunteers to review the document for direct feedback?



Upcoming Meetings

- ✓ Yolo WRA Tech. Com. – Oct. 4, 2018
- ✓ Lake Co. Planning & Public Works – Jan. 10, 2019
- ✓ Middletown Area Town Hall (MATH) – Jan. 10, 2019
- ✓ City of Winters WWTP – Jan. 14, 2019
- ✓ **Napa Co. Watershed Info. & Conservation Council (WICC) – Jan. 24, 2019**
- Colusa Co. RCD – Feb. 19, 2019
- City of Vallejo (Solano Co.) – ?

Other Relevant Updates

- **Corona & Twin Peaks (Napa Co.)** – Wrapping up
- **Oat Hill Rd. project (Napa Co. Measure A)** – Starting
- **Yocha Dehe** – Developing projects
- **BLM (Ukiah Office)** – Ongoing assessments & cleanups



For more information

Stephen McCord

McCord Environmental, Inc.

sam@mccenv.com

530-220-3165

www.mccenv.com

Danielle Dolan

Local Government Commission

ddolan@lgc.org

916-448-1198 x311

www.lgc.org