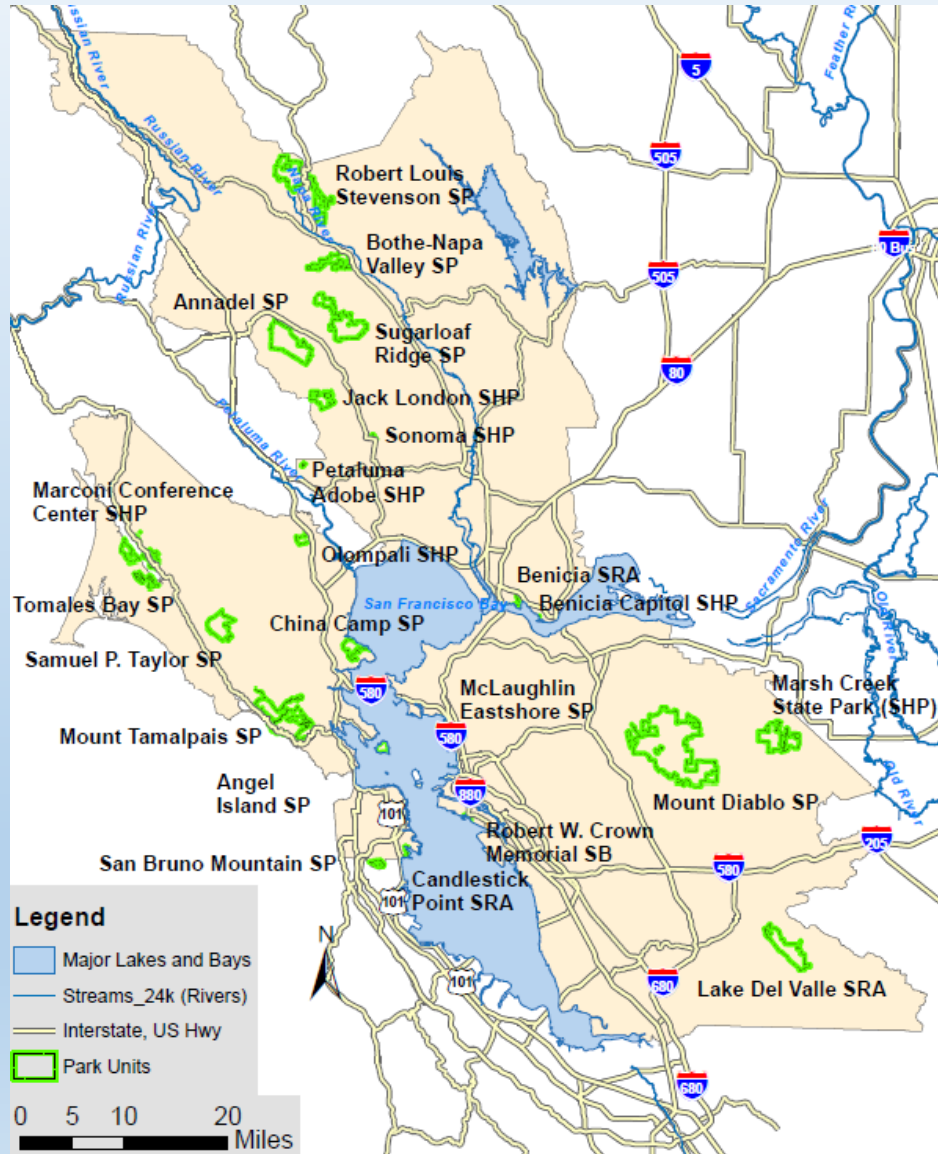




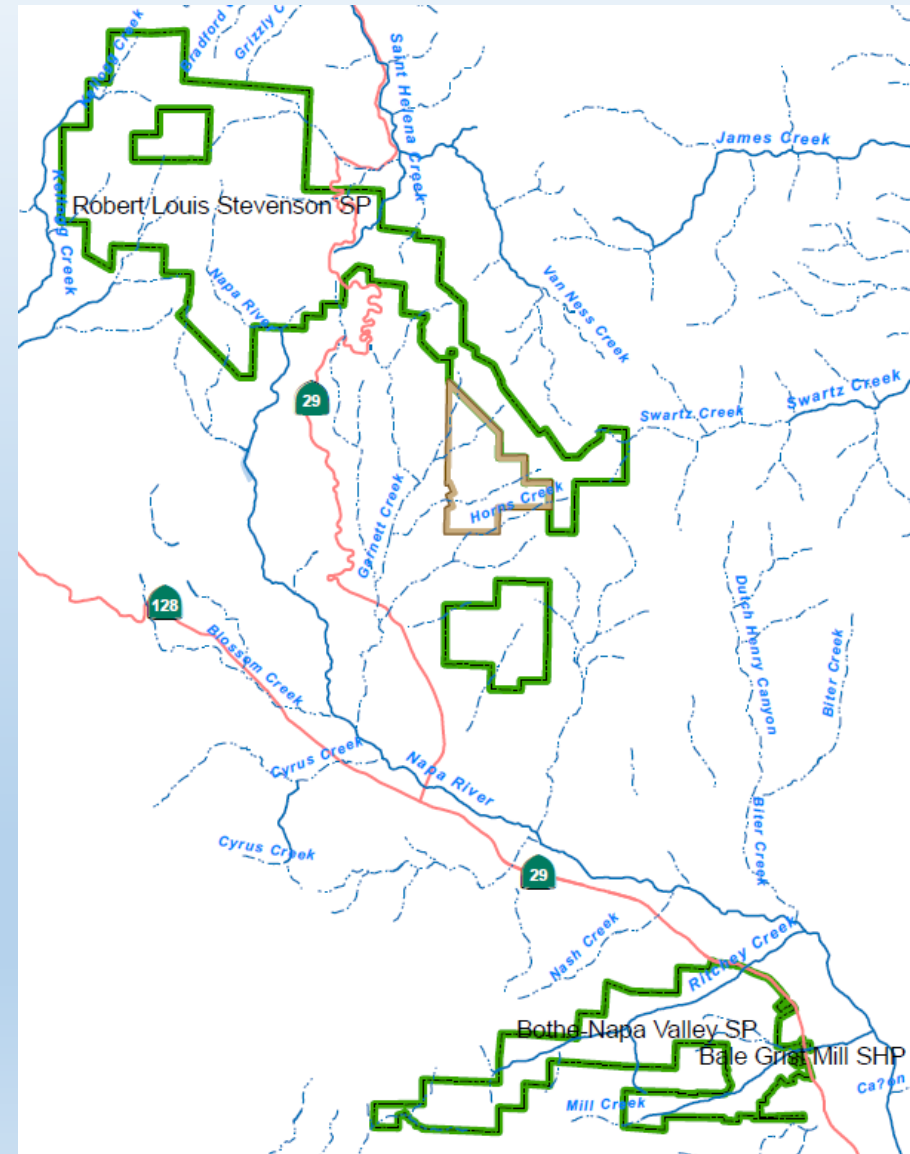
State Parks Natural Resource Program in Napa County

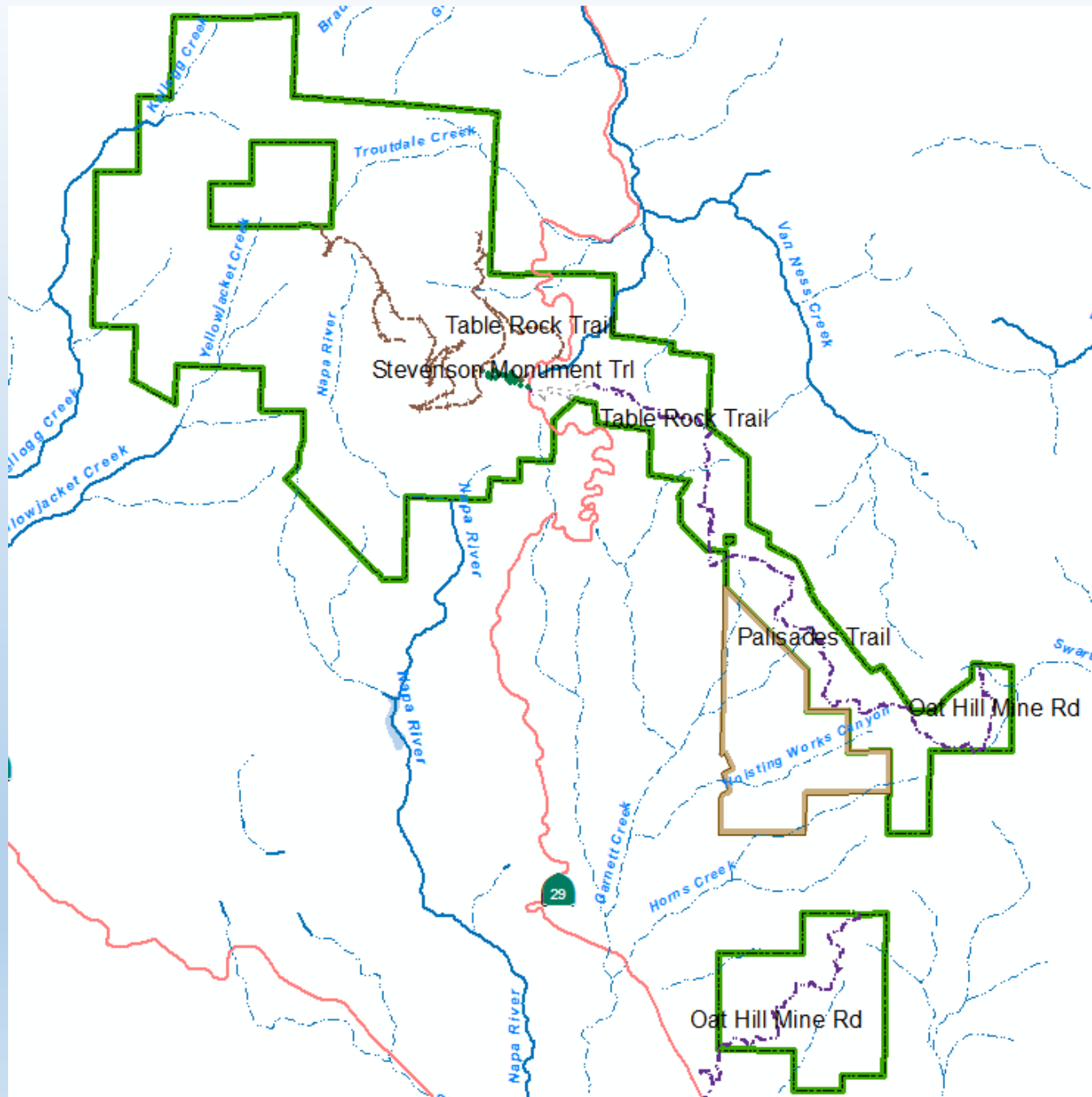
Our Mission: To provide for the health, inspiration and education of the people of California by helping to preserve the state's extraordinary biological diversity, protecting its most valued natural and cultural resources, and creating opportunities for high-quality outdoor recreation.

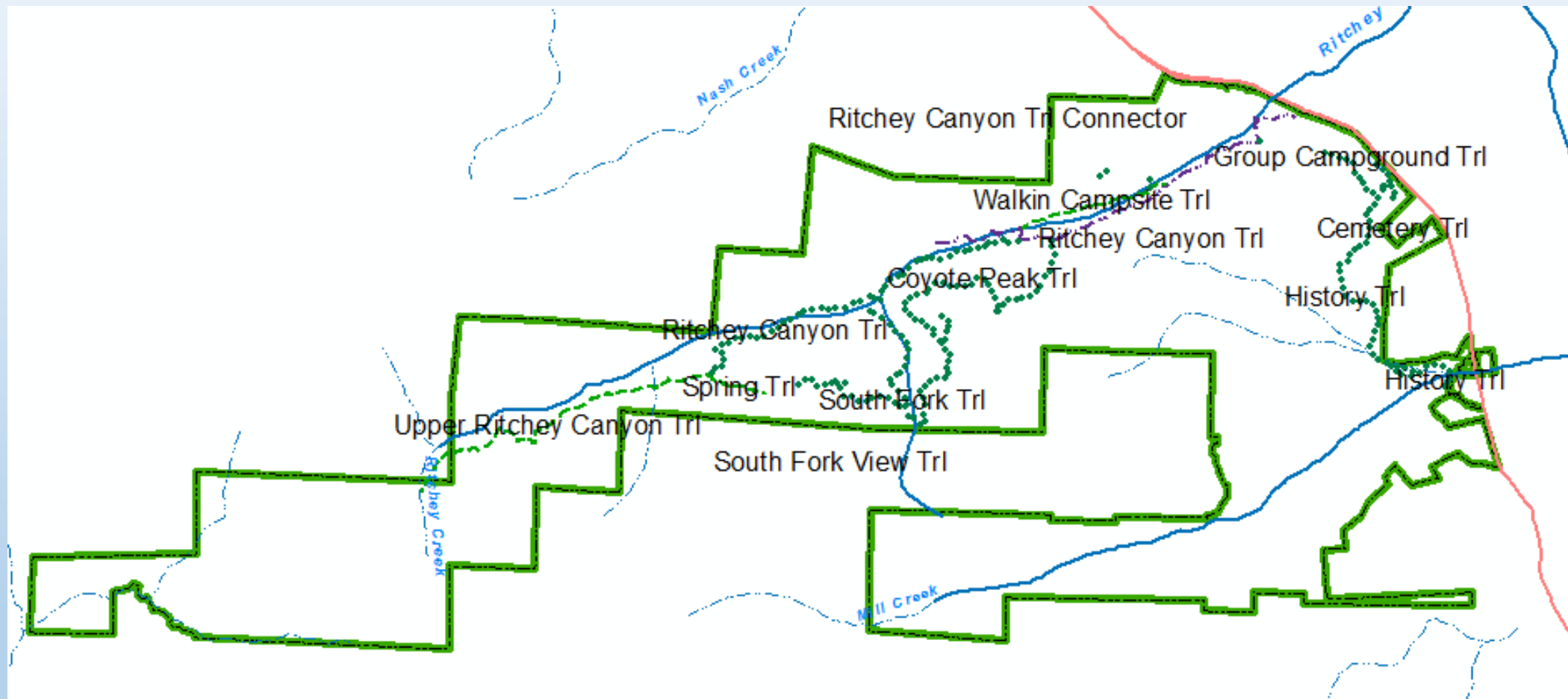
Bay Area District Park Units



State Parks within Napa County







Natural Resource Ongoing Program and Special Funded Projects

Native community protection through:

- Invasive species control
- Forestry and succession management
- Rare, listed and endangered species population assessments and habitat protection/enhancement
- Continuous native community monitoring, assessment and project prioritization
- Defensive planning for natural resource protection

Habitat restoration activities:

- Restoring lost communities (oak woodland, wetlands)
- Improving hydrologic function and habitat quality (stream impediment/fish passage barrier removals, landform restoration, aquatic feature protections)
- Forest health improvement and protection
- Special status species habitat improvements (non-native species removal, Population assessments and collaborations/planning)

Support of acquisition of new science:

- Scientific Collection permits
- Collaborations with resource agencies, other public land managers, species experts, scientific forums
- Support for citizen science and public outreach to engage community members





Rainbow Trout and Sculpin (Doug Rischbieter, 2017)



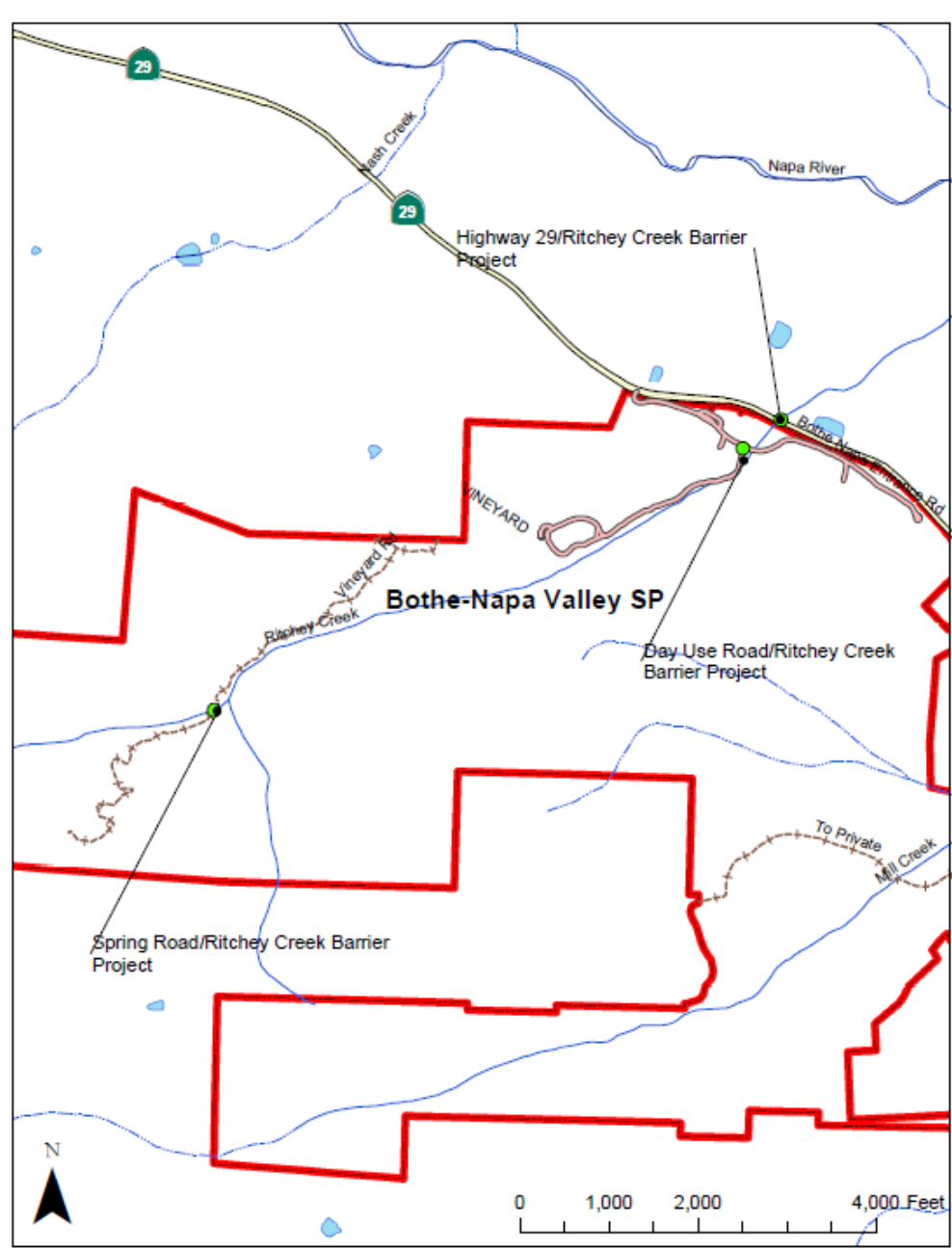
Northern spotted owl (Seth Bunnell)



Foothill yellow-legged frog (Cyndy Shafer, 2008)



Clara Hunt's milk vetch (John Game)



Fish Passage Barrier Locations on Ritchey Creek within/adjacent to Bothe- Napa Valley SP

- Ritchey Creek and Highway 29
- Ritchey Creek and the State Park Day Use Road
- Ritchey Creek and Spring Road



Ritchey Creek and Day
Use Road Barrier

- Funding identified in April 2018
- Contract to receive funds is to be initiated in August 2018
- Project is in need of all permitting and design
- Cultural resource protection is of highest priority for integration into design process
- Facility and use impact minimization will be heavily integrated into methodology



*Ritchey Creek and Spring Road
Crossing Barrier*

- Project initiation began in 2009
- Project is fully designed, permitted and funded
- Implementation to begin in August 2018 (hard start date pending contract finalization)
- Cultural and natural resource protection measures will be in place during all project activities, including cultural and biological monitoring



*Ritchey Creek and State
Highway 29 Barrier*

- Funding approved in April 2018
- Project is mostly outside of State Park landbase but could reach into State Park if design requires
- Project will be managed by Caltrans District 04 with assistance from Napa County RCD as needed
- State Parks will be integral in review of design to ensure cultural and natural resource protections