



Board of Directors

Diane Dillon
Mark Luce
Peter White
Gary Kraus
James Krider
Belia Bennett
Marita Dorenbecher
Mike Basayne
Jeff Reichel
Rita Steiner
Jeffrey Redding
Susan Boswell
Jim Lincoln
Marc Pandone
Warren Flint
Mitchell Klug
Jason Lauritsen

Alternate

Keith Caldwell

Staff

Representatives

Patrick Lowe,
Secretary
Program Manager,
Natural Resources
Conservation
Dept. Public Works

Jeff Sharp,
Principal Natural
Resources Planner,
Dept. Public Works

Laura Anderson,
Legal Counsel
Attorney IV,
County Counsel's
Office

804 First Street,
Napa, CA
94559-2623

Tel: 707-259-8600

info@napawatersheds.org

AGENDA

REGULAR BOARD MEETING

Thursday, September 27, 2012, 4:00 p.m.

2nd Floor Conference Room, Hall of Justice Building,
1125 Third Street, Napa CA

1. CALL TO ORDER & ROLL CALL

New appointments and re-appointments – **Welcome to Warren Flint**, newly appointed Public at Large representative, followed by roundtable of introductions by Board members (Chair)

2. APPROVAL OF ACTION MINUTES

Meeting of **March 22, 2012** and Special Joint Meeting of **July 26, 2012** (Chair) (5 min)

3. PUBLIC COMMENT

In this time period, anyone may comment to the Board regarding any subject over which the Board has jurisdiction, or request consideration to place an item on a future Agenda. No comments will be allowed involving any subject matter that is scheduled for discussion as part of this Agenda. Individuals will be limited to a three-minute presentation. No action will be taken by the Board as a result of any item presented at this time. (Chair)

4. DISCUSSION AND ACTION

Election of new Vice-Chair for remainder of year 2012 (per Bylaws§ II.B.)
(Board; WICC Staff) (5 min)

5. UPDATES, REPORTS AND DISCUSSION

- a. Update and **results from September 15th Coastal Clean-up Day** of Napa County's waterways (Stephanie Turnipseed, Education Coordinator, Napa County Resource Conservation Dist.) (5 min)

(Cont.)

5. **UPDATES, REPORTS AND DISCUSSION** (*Cont.*)

- b. Report on upcoming **Napa Tree Forum** (Tony Norris, Board President, Napa County Regional Park and Open Space Dist.) (*5 min.*)
- c. Report on County **Groundwater Resources Advisory Committee** (GRAC) (WICC staff) (*5 min*)
- d. Update on **Integrated Regional Water Management Planning (IRWMP)** in the Bay Area and Sacramento River funding areas, planning and plan update processes, grant timeline and list of projects (WICC staff, Fld. Dist. staff) (*10 min*)
- e. Update on **2012 Napa River Fisheries Monitoring** results (Johnathan Koehler, Fisheries Biologist, Napa Co. Resource Conservation Dist.) (*15-20 min*)
- f. Update and discussion on status of the **Napa River Sediment TMDL and Vineyard Waiver** development (Brian Bordona, Supervising Planner, Napa Co. Planning, Building and Environmental Services / member of waiver Stakeholder Advisory Group) (*15 min*)
- g. Report on Board of Supervisor approval of consultant agreement for **development of a TMDL implementation tracking and accounting tool** (WICC staff) (*5 min*)
- h. Other reports and updates (WICC Staff, Board, Public)

6. **PRESENTATIONS AND DISCUSSION**

- a. Update, report and discussion on **Napa County Stormwater Pollution Prevention Program, completion of FY 2011/12 Annual Report and new State stormwater permitting regulations** (Jamison Crosby, Stormwater Program Manager, Napa County Public Works/Flood Control Dist.) (*20 min*)
- b. Presentation and discussion on status of **Napa River Flood Project and flood management features being constructed on Napa Creek** (Julie Lucido, Flood Project Manager, Napa County Flood Control and Water Conservation District) (*20 min*)

-- Possible walking tour of the downtown project after meeting for those interested --

7. **INFORMATIONAL ANNOUNCEMENTS**

Presentation of **informational announcements / events** (WICC staff, Board, Public)

8. **FUTURE AGENDA ITEMS**

Discussion of possible **items for future agendas** (Board, WICC Staff)

(cont.)

9. **NEXT MEETING** (Chair)

Regular Scheduled Board Meetings:

October 25, 2012 – No meeting

November 15, 2012 – 4:00 PM (Note: One week earlier - Save the date)

10. **ADJOURNMENT** (Chair)

Note: If requested, the agenda and documents in the agenda packet shall be made available in appropriate alternative formats to persons with a disability. Please contact Jeff Sharp at 707-259-5936, 804 First St., Napa CA 94559-2623.





Board of Directors

Diane Dillon
Mark Luce
Peter White
Gary Kraus
James Krider
Belia Bennett
Marita Dorenbecher
Mike Basayne
Jeff Reichel
Rita Steiner
Jeffrey Redding
Susan Boswell
Jim Lincoln
Marc Pandone
Chris Sauer
Mitchell Klug
Jason Lauritsen

Alternate

Keith Caldwell

Staff

Representatives

Patrick Lowe,
Secretary
Deputy Director,
CDPD

Jeff Sharp,
**Watershed
Coordinator**
Principal Planner,
CDPD

Laura Anderson,
Legal Counsel
Attorney IV,
County Counsel's
Office

Sarah Minahen,
Admin. Assistant
Office Assistant II,
CDPD

1195 Third Street,
Suite 210
Napa, CA
94559

Tel: 707-253-4417
Fax: 707-253-4336

www.napawatersheds.org

- MINUTES / ACTION SUMMARY -

REGULAR BOARD MEETING

Thursday, March 22, 2012, 4:00 p.m.

2nd Floor Conference Room, Hall of Justice Building,
1125 Third Street, Napa CA

1. CALL TO ORDER, ROLL CALL AND INTRODUCTIONS (Chair)

Members present: Diane Dillon, Peter White, Belia Bennett, Mike Basayne, Jeff Reichel, Rita Steiner, Jim Lincoln, Marc Pandone, Chris Sauer, Mitchell Klug, Marita Dorenbecher

Members excused: Marc Luce, Gary Kraus, Jeffrey Redding, Susan Boswell,

Members absent: James Krider, Jason Lauritsen

Staff present: Patrick Lowe, Jeff Sharp, Sarah Minahen

Introduction of Marita Dorenbecher as new representative for the Town of Yountville.

2. APPROVAL OF ACTION MINUTES

Meeting of January 26, 2012 (Chair)

Approved as amended.

3. PUBLIC COMMENT

In this time period, anyone may comment to the Board regarding any subject over which the Board has jurisdiction, or request consideration to place an item on a future Agenda. No comments will be allowed involving any subject matter that is scheduled for discussion as part of this Agenda. Individuals will be limited to a three-minute presentation. No action will be taken by the Board as a result of any item presented at this time. (Chair)

Warren Flint, 5Es, sustainability specialist spoke. He attended the Integrated Regional Water Management Plan Workshop in Yountville, was pleased with the overall work being done throughout the area. He was struck by emphasis of integration. He noted that the Napa River Watershed would be very adaptable to sustainability indices given the data already being collected. He believes that getting the public more involved would be beneficial.

4. UPDATES, ANNOUNCEMENTS AND DISCUSSION:

- a. Update on 2012 fisheries monitoring efforts in the Napa River basin (Jonathan Koehler, Fisheries Biologist, Napa Co. Resource Conservation Dist.)

Johnathan Koehler presented the item. He reported on the operation of the RCD's rotary screw trap in the Napa River to collect population data on steelhead & salmon migration. They are in their fourth year of data collection. The CA Dept. of Fish & Game funded additional monitoring for years 2012-13. This extra funding was applied towards the use of "fyke nets" placed in Milliken Creek and Napa Creek. So far this season, catch in those watersheds has been very light. 2012 monitoring 'season' is still underway and results will be reported later in the year.

- b. Announcement of Napa Valley Historical Ecology Atlas publication release (Robin Grossinger, Dir. of Historical Ecology, San Francisco Estuary Inst.)

Robin Grossinger passed out the published atlas and described its layout. He noted that historical information opens the door for a look into the future of the Napa Valley. Ms. Beller, Napa Valley Arts and Lectures, spoke about the outreach efforts underway to get the word out about the book. A formal release/celebration of the publication is tentatively scheduled for Thursday, May 24, 7:00 p.m. Theater at Copia – free to public.

Patrick Lowe introduced the topic of re-oaking the Napa Valley, a companion effort resulting from the historical ecology work behind the publication. The Board discussed the idea and prospects of the re-oaking project.

5. PRESENTATION AND DISCUSSION:

Presentation and overview of San Francisco Bay Regional Water Quality Control Board programs focusing on Napa River Total Maximum Daily Load (TMDL) implementation, including status report on the grazing waiver enrollment, resources available for developing ranch plans and compliance, and work to date on the vineyard waiver development, stakeholder process, draft waiver contents and schedule (Sandi Potter, Engineering Geologist, and Rico Duazo, Wastewater Engineer, SF Bay RWQCB)

Sandi Potter discussed regulation of water quality in California and other Water Board policies that may affect Napa: She noted that the North Coast Instream Flow Policy could have a major impact on farmers; and that a Statewide Stream and Wetland Policy is currently under development. The SF Bay RWQCB operates out of their offices in Oakland. Main divisions that may involve WICC activities include the Planning and TMDL division and the Watershed division – handout of contacts list.

Progress of developing Total Maximum Daily Loads (TMDLs) for the pollutants in Napa River Watershed - Napa River was listed as being impaired by sediments, pathogens and nutrients. The listing resulted in the development of the sediment TMDL (State Board adoption 20010) – now in pending litigation and the Pathogen TMDL (completed). The sediment and pathogen TMDLs were developed to address nutrients, so it is unlikely another regulation will be developed to address nutrients at this time. It is the Sediment TMDL that specifically calls for developing regulations/actions to reduce fine sediment and protect habitat. The goal is to control the production and movement of sediment off properties and to prevent erosion at the receiving waters for those properties along creeks, streams and rivers.

The Sediment TMDL Vineyard Waiver has been in progress almost two years. California's non-point source policy of State Water Board directs control of pollution either by issuing a general waste

discharge requirement (“WDR”), or by issuing individual WDRs. The State Board implemented a fee last year due to State budget cuts for actions taken to review and approve WDRs. The State encourages the formation of coalitions or third party groups to allow similar dischargers or trade organizations to come together and apply for coverage under a group WDR waiver program and to conduct group monitoring and reporting to limit compliance costs. The Vineyard Waiver Stakeholder Advisory Group recently met on March 1st. Water Board staff is continuing to work with the stakeholders to refine the language and conditions of the draft waiver to effectively implement the program. October 2014 is the deadline to file the NOI (notice of intent) to come under the waiver or submit a report of waste discharge as prescribed under the State Water Code. The target of the TMDL is to reduce manmade sediment by half.

Rico Duazo discussed the grazing waiver and explained how the waiver has many similar elements as the vineyard waiver. He noted that the grazing waiver is roughly one year ahead of the vineyard waiver. 30 ranchers have already submitted NOIs. The goal of the grazing waiver is to have all eligible ranchers in the program (estimated at around 50 in the Napa River watershed). Rico mentioned that the Water Board reserves the right to individual enforcement, but the goal is to get people into the program. Workshops are available to help develop individual and group ranch plans. Links to resources are available on the Water Board’s website.

Leigh Sharp from Resource Conservation District mentioned that individual grants are not available to assist with ranch plans, but the Natural Resources Conservation Service has a cost share program available to individual land owners.

Ranch plan fees – Currently, the Water Board is not requesting fees for the grazing waiver.

Sandi Potter discussed the fees for the Vineyard Waiver: If you come in as an individual, there is a “per acre” fee; as a group, there is a much reduced acreage fee (\$.50/ac). Water Board staff is still trying to figure out the subtleties of how to calculate total fees for the program.

Jim Lincoln – mentioned that previously the stakeholder group was frustrated with the waiver process and didn’t feel like they were being utilized as an advisory group. He noted that the March meeting was better and was successful in opening dialogue with the stakeholder group. Since then discussions have been more productive.

6. UPDATES, REPORTS AND DISCUSSION:

Informational reports and updates for discussion - presented by staff, members of the board and invited public.

- a. Report on **Napa River TMDL Implementation Grant** to Napa County by U.S. EPA totaling \$3,265,000 in total funding to conduct five interrelated sub-projects to reduce fine sediment and polluted runoff within the Napa River watershed and to restore habitat and beneficial uses (Rick Thomasser, Watershed and Flood Control Op. Manager, Napa Co. Public Works/Fld. Dist.)

In 2011, the Flood District applied to the EPA for a grant. The grant is being funded incrementally. Currently four projects have been funded (handout provided):

- \$450,000 for support of the Rutherford Reach River Restoration Project
- \$720,000 for Oak Knoll Reach Design.
- \$155,000 to assist in Ranch Water Quality Plans (grazing waiver support).
- \$200,000 towards rural roads assessment (roads TMDL support)

\$ 220,000 is still pending to develop a TMDL tracking and accounting system to document that we are complying with the TMDL regulatory program.

- b. Report on **Integrated Regional Water Management Planning (IRWMP)** in the Napa River, Suisun Creek and Putah Creek basins, planning and plan update processes, timeline, stakeholder outreach meetings and project database (WICC staff, Fld. Dist. staff)

Rick Thomasser and Jeff Sharp reported on an outreach meeting was held February 21st in Yountville. The meeting was well attended and was the first public outreach effort to bring the general public up to speed with Prop 84 (IRWMP) grant opportunities. A project database tool was developed and discussed, and stakeholders are being asked to work together and sponsor potential projects. Round 2 Prop 84 (IRWMP) grants are coming up and there is a need to determine if Napa County has projects to serve up to the Bay Area IRWM plan update process. The State will set guidelines and priorities by which projects across the region will be assessed. Across the North Bay are there efforts to coordinate these projects and put them into categories that make sense for particular funding sources.

Draft Round 2 implementations guidelines will be out in July 2012, final guidelines in Oct. Applications will be due in March 2013. There is \$47 million left to give out in the Bay Area and \$10 million to distribute to the Sacramento funding area. The outreach effort has kicked off with numerous community meetings over the past few months. Stay tuned to the WICC website for meeting announcements.

- c. Update on County **Groundwater Resource Advisory Committee (GRAC)** (WICC staff)

Patrick Lowe reported on the variety of presentations and information presented at the last GRAC meeting, including a presentation from Dr. Harter from UC Davis on foundational, “groundwater 101” terminology, Sonoma County’s overview on their experience with groundwater management, representatives from the State discussed details on statewide monitoring efforts, Deputy Director Phil Miller lead a discussion on monitoring and the confidentiality involved with well data, and Rick Thomasser and Patrick Lowe introduced an outline for use in developing a local groundwater monitoring plan. A sub-committee of the GRAC is working on communication and education outreach plan. A joint WICC/GRAC meeting is planned for July.

Contact Phil Miller, Rick Thomasser or Patrick Lowe for questions regarding the GRAC.

- d. Other reports and updates (WICC Staff, Board, Public)

None.

7. PRESENTATIONS AND DISCUSSION:

- a. Presentation and discussion on Selby Creek Streambank Restoration and Riparian Enhancement Project (BioEngineering Associates)

Chris Anderson from BioEngineering Associates reported on the restoration efforts along Selby Creek near Larkmead Lane. Massive erosion has occurred on the site, making the stream bank unstable in many areas. To address the erosion, soil was added strategically along a 5 mile stretch and planted with native plants/grasses. A series of rock deflectors were added to control velocities, concentrate water into the channel and create meandering. In total, plantings included

about 5000 Oak and Ash trees, creating more shade and habitat. The project also remove invasive species (blackberries, etc.).

8. ANNOUNCEMENTS:

Informational announcements presented by staff, members of the board and public (WICC Staff; Board, Others)

- a. Announcement of Board Member terms of office expirations in August 2012 (WICC staff)

Jeff Sharp reported on the terms about to expire.

- b. Other announcements (WICC staff, Board, Public)

Jeff Sharp reported on World Water Day (flyer provided); North Bay Watershed Association conference - April 13, 2012, Petaluma, and WICC booth at Earth Day – Saturday, April 25, 2012, in downtown Napa.

9. FUTURE AGENDA ITEMS (Board; WICC Staff)

Discussion of possible items for future agendas (Board, WICC Staff)

None

10. NEXT MEETINGS (Chair)

Regular Scheduled Board Meetings:

April 26, 2012 – 4:00 PM (*No meeting*)

May 24, 2012 – 4:00 PM (*Save the date*)

July 26, 2012 - Joint meeting with Napa County Groundwater Resources Advisory Committee

11. ADJOURNMENT (Chair)

Motion to adjourn approved.





Board of Directors

Diane Dillon
Mark Luce
Peter White
Gary Kraus
James Krider
Belia Bennett
Maria Dorenbecher
Mike Basayne
Jeff Reichel
Rita Steiner
Jeffrey Redding
Susan Boswell
Jim Lincoln
Marc Pandone
Chris Sauer
Mitchell Klug
Jason Lauritsen

Alternate

Keith Caldwell

Staff

Representatives

Patrick Lowe,
Secretary
Deputy Director,
CDPD

Jeff Sharp,
**Watershed
Coordinator**
Principal Planner,
CDPD

Laura Anderson,
Legal Counsel
Attorney IV,
County Counsel's
Office

Sarah Minahen,
Admin. Assistant
Office Assistant II,
CDPD

1195 Third Street,
Suite 210
Napa, CA
94559

Tel: 707-253-4417
Fax: 707-253-4336

www.napawatersheds.org

- MINUTES / ACTION SUMMARY -

JOINT GRAC-WICC SPECIAL MEETING

Thursday, July 26, 2012, 4:00 p.m.

Yountville Community Center
6516 Washington St., Yountville, CA

1. CALL TO ORDER, ROLL CALL AND INTRODUCTIONS (Chair)

Members Present: Mark Luce; Peter White; Belia Bennett; Jeff Reichel; Rita Steiner; Susan Boswell; Jim Lincoln; Marc Pandone; Chris Sauer; Mitchell Klug; Jason Lauritsen; Maria Dorenbecher, Keith Caldwell.

Members excused: Diane Dillon, Mike Basayne and Jeffrey Redding

Members absent: Gary Kraus, and James Krider

Staff present: Patrick Lowe, Jeff Sharp, Sarah Minahen

After a welcome by the respective Chairs, the WICC and Napa County Groundwater Resources Advisory Committee (GRAC) members introduced themselves and briefly noted their backgrounds and roles in their respective organizations.

2. UPDATE ON WICC ACTIVITIES

Patrick Lowe, Natural Resources Conservation Program Manager, and Jeff Sharp, Principal Natural Resources Planner, Public Works, gave an informational PowerPoint presentation on the WICC and made reference to the informational brochure included in the agenda packet.

3. UPDATE ON GRAC ACTIVITIES

Patrick Lowe, Natural Resources Conservation Program Manager, Public Works, referenced the GRAC's Work Plan and the Meeting Synopsis of June 28 included in the agenda packet. Hillary Gitelman, Director, of Planning, Building and Environmental Services, provided a brief overview of the GRAC creation and activities to date.

Vicki Kretsinger Grabert, Principal Hydrologist, Luhdorff & Scalmanini Consulting Engineers (LSCE), provided a PowerPoint presentation that touched on recent groundwater studies, efforts in coordinating the County's California Statewide Groundwater Elevation Monitoring (CASGEM) Program, and recommendations from initial groundwater studies and the implementation of some of those recommendations, including the updating of the hydrogeologic conceptualization and characterization of Napa County's groundwater resources, and the development of a groundwater monitoring plan. Ms. Kretsinger Grabert referenced the 2011 Napa County groundwater report,

which compiled baseline data from previous studies and can be found on the GRAC's website. Napa County applied to become the monitoring entity for the CASGEM program through CA Dept of Water Resources in 2011 and identified a representation of wells that look at existing trends and conditions representative of the aquifer system, which is a subset of an overall monitoring network. Although there is a lot of groundwater monitoring data, it is not necessarily well distributed and may not provide information important to achieving groundwater monitoring objectives, thus creating the need for improved distribution of data. Some tasks developed to improve hydrogeologic conceptualization and characterization include: 1) an extensive geologic study in select areas, 2) looking further at groundwater monitoring wells where there are historic and/or current measurements and possible well construction information, 3) looking further at the recharge levels, and 4) developing guidance through other information compiled in earlier studies. The GRAC previously looked at Sections 1 through 3 of a draft groundwater monitoring plan. There was substantial interest in discussing Section 3 – Groundwater Resources Goals and Monitoring Objectives, which spurred the creation of an ad hoc subcommittee. Overarching objectives of both groundwater level and quality monitoring are: alignment with the County's water resources goals, addressing data gaps and provide infill from other sources, and coordination with other entities, such as local, State and Federal agencies/organizations. The objectives of groundwater level monitoring are: to understand groundwater conditions, have a better knowledge of the groundwater budget, and further evaluate surface water to groundwater interaction. Priority subareas identified for groundwater level monitoring within Napa County are: Calistoga, St. Helena, Yountville, Napa, Milliken-Sarco Tulocay (all within the Napa Valley Floor), and Carneros. Objectives of groundwater quality monitoring are: looking at quality differences between areas or vertically within a groundwater system, assess changes and trends, monitor areas that may be affected by saline water (naturally or otherwise), and detect naturally occurring trace metals and minerals. Priority subareas identified for groundwater quality monitoring within Napa County are: Milliken-Sarco-Tulocay (Napa Valley Floor), Carneros, and Jameson/American Canyon. There are 79 sites located in groundwater level priority subareas, whereas groundwater quality priority subareas have 185 sites. The next draft of the groundwater monitoring plan will have information showing some tentative sites relative to the monitoring needs that will better meet the plan objectives. Later in the fall, there will be a report that will compile all of the information from LSCE's work to update the hydrogeologic conceptualization and characterization of the resource. WICC member Marc Pandone suggested involving local well drillers with the GRAC due to the factual and anecdotal information they could provide, including anything historical in nature. Ms. Kretsinger Grabert agreed and said Mike Mortensen, Executive Director of the California Groundwater Association, an organization largely made up of drilling contractors, would be a good contact and would probably welcome the opportunity.

4. STRATEGIZING FOR PUBLIC OUTREACH FOR THE NAPA COUNTY GROUNDWATER MONITORING PLAN

Patrick Lowe, Natural Resources Conservation Program Manager, Public Works, referenced the Draft Communication and Education Plan and Draft FAQs included in the agenda packet. Deborah Elliott, Water Resources Specialist, Public Works, distributed a draft outreach educational brochure. Mr. Lowe complimented the ad hoc subcommittee and Ms. Elliott for the extra hours they've spent on the outreach materials and hoped the brochure, along with past meeting materials posted on the GRAC website, would provide good outreach tools. The materials presented reflect the GRAC's comments and suggestions from their June 28 meeting. Further comments submitted to Mr. Lowe, Ms. Elliott or Jeff Sharp via email in the next week and a half would be welcome for further revisions to the materials that will ultimately be presented at the August 23 GRAC meeting. Ms. Elliott mentioned additions to the draft plan that include an additional objective ("Establish a common understanding of groundwater resources in the County, including conditions and trends evidenced by monitoring data and scientific analyses"). It was suggested that the WICC website also be used as a tool to help get the information out. Also added to the plan was one guiding principle ("Be proactive and utilize GRAC members' existing networks to help locate appropriate well owners") that could be extend to WICC members to help locate appropriate well owners to volunteer for the groundwater

monitoring program. Ms. Elliott went over the draft outreach brochure. GRAC member Alan Galbraith suggested the brochure and the GRAC website mention that further study to determine priority monitoring areas is required. WICC member Jeff Reichel suggested the Dry Creek Road area for outreach.

5. INFORMATIONAL ANNOUNCEMENTS

Jeff Sharp, Principal Natural Resources Planner, Public Works, stated that staff would be providing an email update to help keep WICC Board members informed between meetings since the WICC meets every other month now.

There were no further announcements from the WICC, GRAC members or staff.

6. ADJOURNMENT

Adjourned to the next regular meeting of the Watershed Information Center & Conservancy on Thursday, September 27, 2012 at 2:00 p.m.





A Tradition of Stewardship
A Commitment to Service



Napa County Groundwater Resources Advisory Committee GRAC August 23, 2012 Meeting Synopsis

The Napa County Groundwater Resources Advisory Committee (GRAC) held its seventh meeting on August 23, 2012. Discussion focused on two key topics, the draft Napa County Groundwater Monitoring Plan 2012 and the proposed GRAC Communication and Education Plan. Ms. Vicki Kretsinger Grabert of Luhdorff and Scalmanini Consulting Engineers (LSCE) summarized the outcomes of the July 6 GRAC ad hoc committee meeting. She highlighted how suggestions on global monitoring goals and priorities provided by the ad hoc committee, in conjunction with the suggestions provided by the GRAC at their June 28 meeting, guided the recent amendments to the plan. LSCE identified eighteen (18) recommended groundwater monitoring sites that are essential, along with 6 other sites for groundwater and surface water monitoring (DWR grant application), with additional voluntary sites welcomed to meet the goals and priorities of the plan and further the County's understanding of Napa's groundwater resource. Discussion on the draft Communication and Education Plan and the groundwater monitoring plan underlined the importance of ensuring that all public materials, including GRAC meeting slides and handouts, use clear terminology, list items in order of importance, and offer transparency of both the benefits and risks with water level and quality monitoring. Mr. Michael Haley of the GRAC ad hoc Public Outreach and Education Committee, and Mr. Patrick Lowe, Natural Resources Manager, presented the draft Communication and Outreach Plan. GRAC unanimously adopted the plan adding language which makes explicit that the plan is a working document. Brief updates were provided on the Department of Water Resources (DWR) Grant application for groundwater monitoring sites and on the California Statewide Groundwater Elevation Monitoring (CASGEM) program. The County has submitted the final grant application to DWR for six (6) groundwater monitoring sites, with instrumentation for groundwater and surface water monitoring, and is awaiting a response (notification expected by early next year). The County did not receive any inquiries or hear of any concerns regarding the County's recent communication to CASGEM volunteers. The upcoming October meeting will continue discussion on the evolving draft Napa County Groundwater Monitoring Plan with specific attention to groundwater monitoring data management and confidentiality. Please see the GRAC's webpage for copies of the August 23, 2012 presentations and handouts (www.countyofnapa.org/bos/grac).

Committee Staff Contacts:

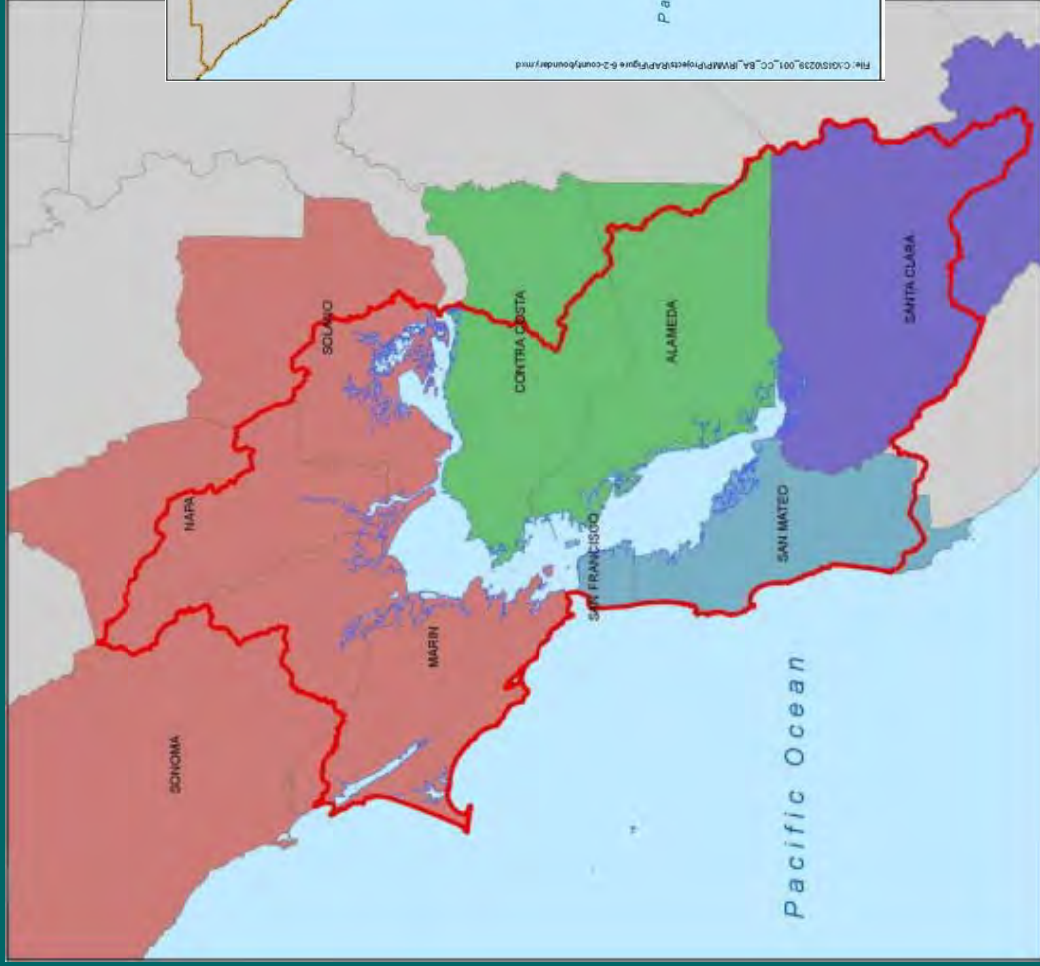
R. Patrick Lowe
Deputy Director
Napa County, CDPD
Phone: 707-259-5937

E-mail: patrick.lowe@countyofnapa.org

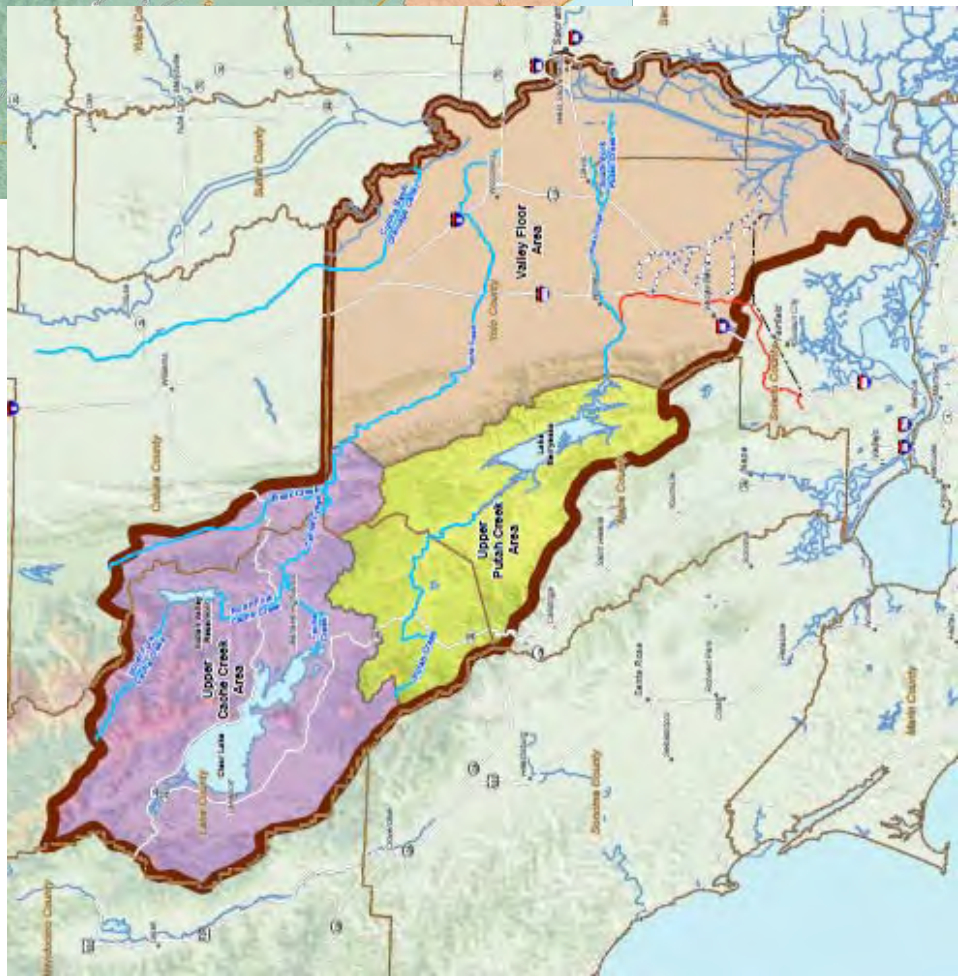
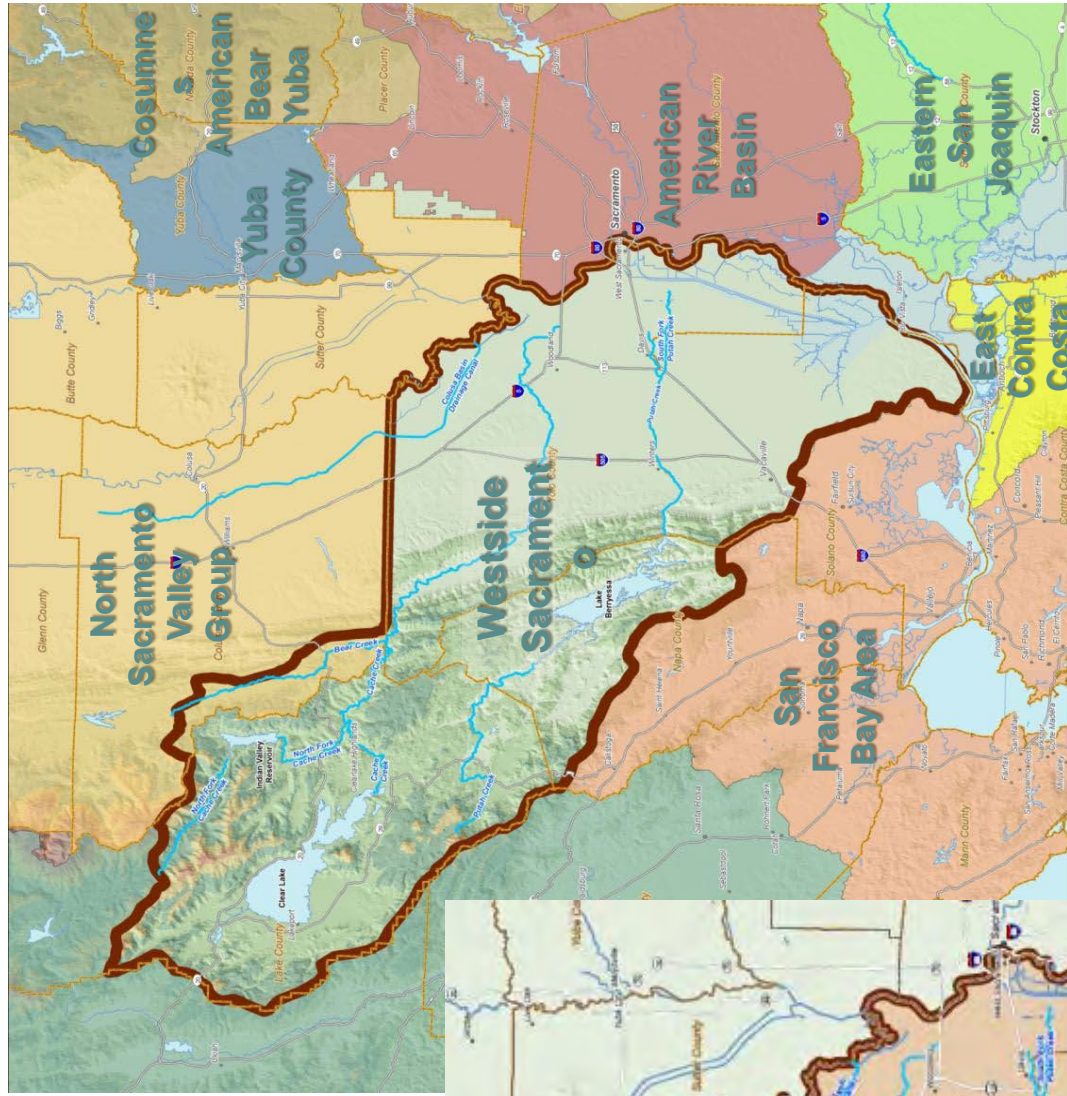
Phillip M. Miller, PE
Deputy Director
Napa County Public Works
Phone: 707-259-8620

E-mail: phillip.miller@countyofnapa.org

Bay Area Region



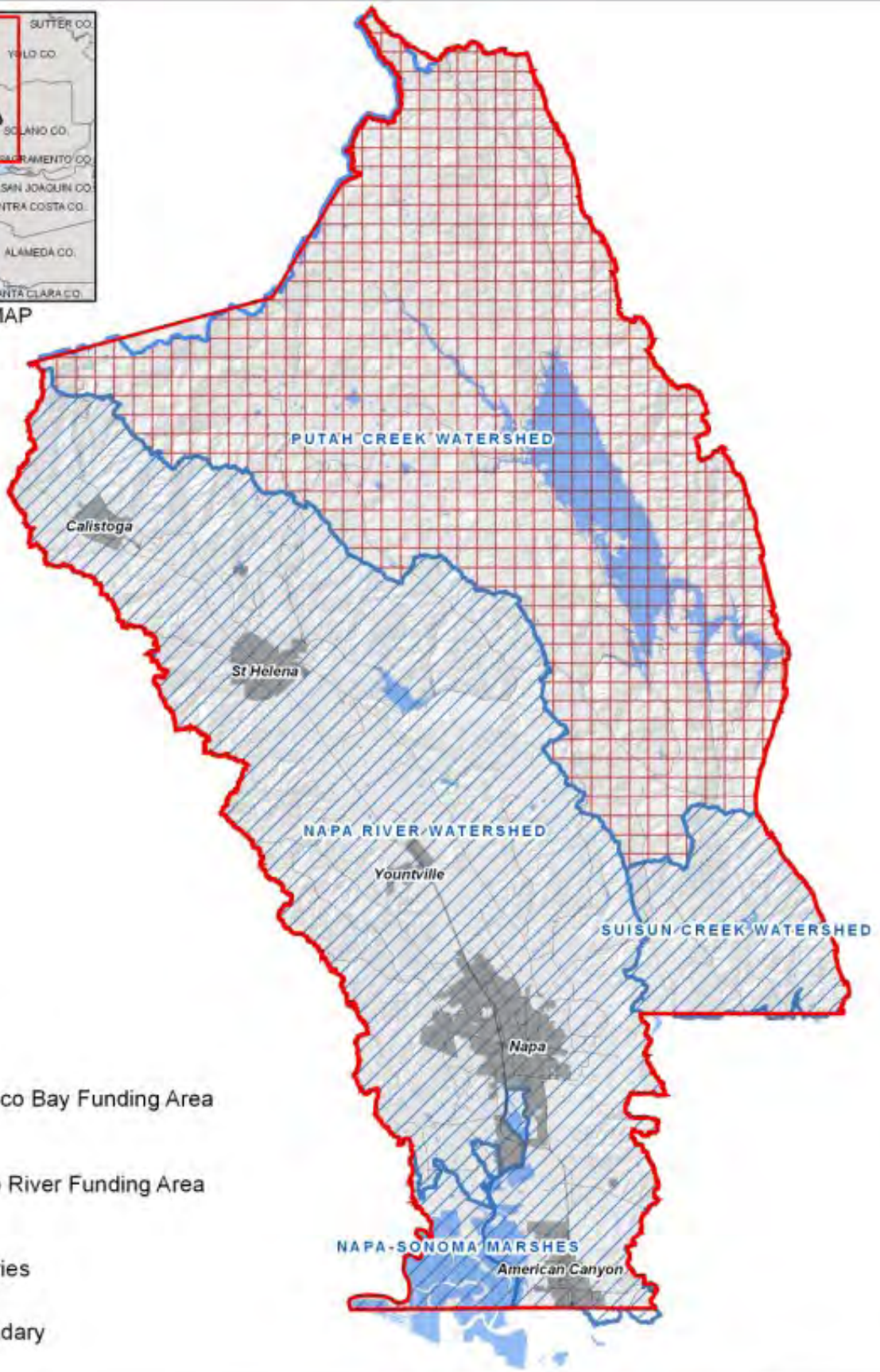
Westside Sacramento IRWMP Region



County





LOCATION MAP





Legend

Major Basins

 San Francisco Bay Funding Area

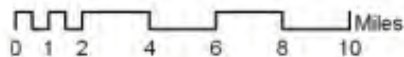
 Sacramento River Funding Area

 City Boundaries

 County Boundary

Horizontal Datum: NAD 83,
CA State Plane Coordinates,
Zone 10, feet

Disclaimer: This map was prepared for
informational purpose only. No liability
is assumed for the accuracy of the
data delineated hereon.



Created Date: 2/1/2011



A Tradition of Dedication
A Commitment to Service

County of Napa 

Conservation, Development
& Planning

IRWM Funding Areas

IRWM Grant Program Draft 2012 Guidelines and Round 2 PSPs

Public Comment Meetings

August 14, 2012 – Santa Rosa
August 15, 2012 – Sacramento
August 16, 2012 – Lancaster



Round 2 Schedule

Revise Program Guidelines & SWFM PSPs	Anticipated Date
Draft Revised Guidelines and PSPs for Public Review & Comment	<i>July 2012</i>
Final Round 2 Guidelines , Implementation & SWFM PSPs	<i>October 2012</i>
SWFM Grants	
Applications Due	<i>December 2012</i>
Draft Recommendations for Public Review & Comment	<i>May 2013</i>
Announce Final Awards	<i>July 2013</i>
Implementation Grants	
Applications Due	<i>March 2013</i>
Draft Recommendations for Public Review & Comment	<i>August 2013</i>
Announce Final Awards	<i>September 2013</i>

Anticipated Round 3 Schedule

IRWM Round 3 Implementation Grants	Anticipated Date
Step 1 - Plan Evaluation Phase	
Applications Due	<i>Spring 2014</i>
Release Draft Call Back List for Public Review & Comment	<i>Fall 2014</i>
Release Final Call Back List	<i>Fall 2014</i>
Step 2 - Project Evaluation Phase	
Applications Due	<i>Early 2015</i>
Draft Recommendations for Public Review & Comment	<i>Mid-2015</i>
Announce Final Awards	<i>Summer 2015</i>

P 84 Funds for Future Awards

Funding Area	Remaining Balance	% Remaining End Round 1	Round 2 @ \$131M
North Coast	\$25,133,939	68%	\$5,386,000
San Francisco Bay	\$93,980,130	68%	\$20,086,000
Central Coast	\$27,388,044	53%	\$7,569,000
LA-Ventura	\$144,708,554	67%	\$31,294,000
Santa Ana	\$91,149,996	80%	\$16,671,000
San Diego	\$69,763,987	77%	\$13,245,000
Sacramento River	\$46,724,344	64%	\$10,626,000
San Joaquin River	\$36,033,774	63%	\$8,296,000
Tulare/Kern	\$33,049,935	55%	\$8,734,000
Lahontan	\$13,705,051	51%	\$3,930,000
Colorado River	\$21,940,000	61%	\$5,240,000

North Bay Sub-Region IRWMP Projects

1	350 Home and Garden Challenge Bay Area
2	Ash Creek Stormwater Management and Wildlife Enhancement Project
3	Bay Area Green Infrastructure Initiative: Scientific support related to planning and implementation of water infrastructure upgrades toward green alternatives
4	Bay Area Regional Water Conservation and Education Program
5	Bay-Friendly Landscape Standards for Green Infrastructure Projects: Maximizing Watershed Benefits
6	Bay-Friendly Outreach Campaign for Home Gardeners and Nurseries
7	Bay-Friendly Qualified Landscape Professionals Training
8	Beach Watch Program
9	Bel Marin Keys Phase of the Hamilton Wetlands Restoration
10	Bolinas Avenue Stormwater Quality Improvements and Fernhill Creek Restoration
11	Bolinas Lagoon Ecosystem Restoration Project
12	Building Climate Change Resiliency Along the Bay with Green Infrastructure & Treated Wastewater
13	City Watersheds of Sonoma Valley
14	Cleaning up trash in the Bay Area's stormwater
15	Collaborative Aquatic Resource Protection in the Watershed Context: Science and Technology to Visualize Alternative Landscape Futures
16	Conserving Our Watersheds
17	Corte Madera Bayfront Flood Protection and Wetlands Restoration Project
18	Corte Madera Creek Headwaters Restoration Plan
19	Corte Madera Creek Tidal Marsh Restoration
20	Corte Madera Creek Watershed - Broadmoor Avenue Bridge Replacement and Creek Bank Restorations
21	Corte Madera Creek Watershed - Fairfax Creek Improvements
22	Corte Madera Creek Watershed - Lefty Gomez Field Detention Basin
23	Corte Madera Creek Watershed - Loma Alta Tributary Detention Basin
24	Corte Madera Creek Watershed - Memorial Park Detention Basin, San Anselmo
25	Corte Madera Creek Watershed - Merwin Avenue Bridge Replacement and Creek Bank Restorations
26	Corte Madera Creek Watershed - Nokomis-Madrone Neighborhood Flood Protection
27	Corte Madera Creek Watershed - San Anselmo Creek Improvements
28	Corte Madera Creek Watershed - Sleepy Hollow Creek Improvements
29	Corte Madera Creek Watershed Infiltration and Storage Assessment
30	Corte Madera Creek Watershed Sediment Control and Drinking Water Reliability Project
31	Corte Madera Creek Watershed: Barriers to Fish Passage in Sleepy Hollow Creek
32	Corte Madera Creek Watershed: Saunders Fish Barrier Removal
33	Corte Madera Creek Watershed: Sedimentation Management
34	Corte Madera Creek Watershed: Smolt Trapping
35	Developing a Conservation Reserve Enhancement Program Proposal (CREP) to improve water quality and protect rangeland habitats in the Bay Area
36	Dwyer Road Pump Station
37	Goat Island Marsh Tidal Marsh Restoration & Interpretive Nature Trail
38	Implementation of the Napa River Watershed Assessment Framework
39	Implementing "Slow It, Spread It, Sink It!" in Sonoma and Napa Counties
40	Implementing LandSmart Plans to Improve Water Quality
41	Implementing TMDLs in the Napa River, Sonoma and Suisun Creek watersheds with the Fish Friendly Farming/Fish Friendly Ranching programs
42	Improve Solano Project SCADA infrastructure
43	Improvements to Solano Project Facilities
44	Improving Quantitative Precipitation Information for the San Francisco Bay Area
45	Lagunitas Booster Station
46	Lagunitas Creek Watershed Sediment Reduction and Management Project
47	Lagunitas Creek Winter Habitat Enhancement Implementation
48	LID and Stormwater Management - Lagunitas Watershed
49	Lynch Canyon Watershed Improvements

50	Mapping Marin County's Flood Control Levees
51	Marin County Flood Control Asset Management
52	Marin County Sea Level Rise Land Use Adaptation
53	Marin County Sea Level Rise Land Use Adaptation
54	McInnis Marsh Habitat Restoration Project
55	Mercury Reduction Benefits of Low Impact Development
56	Miller Avenue Green Street Plan
57	Milliken Creek Flood Reduction, Fish Passage Barrier Removal and Habitat Restoration
58	Milliken Diversion Dam Flow Control
59	Montezuma Creek Rehabilitation and Fish Passage Project
60	Napa County Groundwater/Surface Water Monitoring Wells
61	Napa River Arundo Removal Lodi Lane to Zinfandel Lane
62	Napa River Restoration, Bioassessment & Education Project
63	Napa River Restoration: Oakville to Oak Knoll Reach
64	Napa River Rutherford Reach Restoration Project
65	NBA Infrastructure and Capacity Improvements
66	NMWD Gallagher Well and Pipeline Project
67	North Bay Aqueduct Alternate Intake Project
68	North Bay Water Reuse Program
69	North Marin Water District Marin Country Club Recycled Water Expansion
70	Peacock Gap Recycled Water Extension Project
71	Petaluma Flood Impact Reduction, Water & Habitat Quality, Recreation, Phase IV
72	Redwood Creek Restoration at Muir Beach, Phase 5
73	Regional Green Infrastructure Capacity Building Program
74	Regional Sea Level Rise Adaptation Strategy
75	Removing Fish Passage Barriers in the Napa River Watershed
76	Resilient Landscapes Climate Adaptation Strategy: Tools for Designing Sustainable Bay Area Stream, Wetland, and Riparian Habitats
77	Richardson Bay Erosional Shoreline Adaptation to Sea Level Rise: Draft Conceptual Designs and Opportunity/Constraints Assessment
78	Rindler Creek: Habitat Restoration and Erosion Control
79	Rush Ranch HQ Storm Water Management, Public Access & Rangeland Improvements
80	Salvador Creek Intregated Flood and Watershed Improvements
81	San Francisco Bay Livestock and Land Program
82	San Francisco Bay Tidal Marsh-Upland Transition Zone Decision Support System (DSS)
83	San Geronimo Landowner Assistance Program- Habitat Restoration Projects
84	San Pablo Bay South Watershed Awareness and Action Plan
85	Sears Point Restoration Project
86	SEDIMENT MANAGEMENT PLAN FOR THE GRAVEL CREEK WATERSHED
87	Solano Project Terminal Reservoir Seismic Mitigation
88	Sonoma Valley Groundwater Banking Program
89	Sonoma Valley Integrated Water Management Program
90	Soulajule Mercury Remediation
91	Southwestern Solano County Open Space Acquisition and Watershed Assessment
92	Spring Branch Creek Tidal Marsh & Seasonal Creek Restoration
93	Stinson Beach flood protection and habitat enhancement project
94	Suisun City Flood Management and Habitat Restoration Project
95	Suisun Valley Flood Management
96	The Bay Area Creek Mouth Assessment Tool
97	The Students and Teachers Restoring A Watershed (STRAW) Project
98	Tomaes Bay Watershed Water Quality Monitoring and Improvement Program
99	Upland Transition Zone Mapping for Southern San Pablo Bay (West):
100	Upper Napa River Water Quality Improvement and Habitat Enhancement Project
101	Upper York Creek Dam Removal -- St. Helena, Napa River Watershed
102	Water Conservation and Mobile Water Lab Program
103	Water Supply and Instream Habitat Improvements in Suisun Creek
104	Watershed Information Center & Conservancy of Napa County
105	White Slough Flood Control and Improvement Project

WESTSIDE IRWM PROJECT COMPARISON

M A T D I V

Westside Sacramento River IRWM Plan Project List

09/18/2012 Sacramento River IRWM Funding Area

Project No.	Lead Agency /Organization	Project Title	Project Type
1	West Sacramento Area Flood Control Agency	Bees Lakes Preserve	Planning
2	Lower Putah Creek Council	505-East Channel Restoration	Implementable Project
3	Lower Putah Creek Council	Apricot Draw Bank Stabilization	Implementable Project
4	Lower Putah Creek Council	Dry Creek Wildlife Migration Corridor Feasibility Study	Feasibility Study
5	Lower Putah Creek Council	Duncan-Giovannoni Channel Restoration Feasibility Study	Feasibility Study
6	Lower Putah Creek Council	Glide Ranch Channel Restoration Feasibility Study	Feasibility Study
7	Lower Putah Creek Council	Putah Creek Interdam Reach Invasive Weed Control	Implementable Project
8	Lower Putah Creek Council	Lower McNamara Pool Channel Reconfiguration Feasibility Study	Feasibility Study
9	Lower Putah Creek Council	MacQuiddy Channel Reconfiguration Feasibility Study	Feasibility Study
10	Lower Putah Creek Council	Mace to Road 106A Channel Restoration Feasibility Study	Feasibility Study
11	Lower Putah Creek Council	Nishikawa Channel Restoration Feasibility Study	Feasibility Study
12	Lower Putah Creek Council	Old Davis Road to Mace Channel Restoration Feasibility Study	Feasibility Study
13	Lower Putah Creek Council	Olmo-Hammond-UCD Channel Restoration Feasibility Study	Feasibility Study
14	Lower Putah Creek Council	Pleasant Creek Wildlife Migration Corridor Plan	Implementable Project
15	Lower Putah Creek Council	Pleasants Creek Bank Stabilization	Implementable Project
16	Lower Putah Creek Council	Restoria Channel Restoration Feasibility Study	Feasibility Study
17	Lower Putah Creek Council	Road 106A to Yolo Bypass Channel Restoration Feasibility Study	Feasibility Study
18	Lower Putah Creek Council	Russell Ranch Channel Restoration Feasibility Study	Feasibility Study
19	Lower Putah Creek Council	Stevenson Bridge Channel Restoration Feasibility Study	Feasibility Study
20	Lower Putah Creek Council	Thompson Canyon Bank Stabilization Design and Permits	Implementable Project
21	Lower Putah Creek Council	Upper McNamara Pool Channel Reconfiguration Feasibility Study	Feasibility Study
22	Lower Putah Creek Council	Warren Weed Control	Implementable Project
23	Solano County Water Agency	Aquatic Nuisance Vegetation Management	Implementable Program
24	Solano County Water Agency	Commercial Washer Rebate Program	Planning
25	Solano County Water Agency	Gibson Canyon Creek Detention Basin	Planning
26	Solano County Water Agency	Improvements to Solano Project Facilities	Planning
27	Solano County Water Agency	Invasive Plant Removal Program	Planning
28	Solano County Water Agency	Large Landscape Water Efficiency Program	Planning
29	Solano County Water Agency	NBA Infrastructure and Capacity Improvements	Planning
30	Solano County Water Agency	North Bay Aqueduct Alternate Intake Project	Implementable Project
31	Solano County Water Agency	Improve Solano Project SCADA infrastructure	Planning
32	Solano County Water Agency	Solano Invasive Species Program	Planning
33	Solano County Water Agency	Research on Hydrodynamics and WQ Interactions in the Delta.	Planning
34	Solano County Water Agency	Research on Improving Water Treatment for Delta Sources	Planning
35	Solano County Water Agency	Risk Assessment of Delta Water Supplies	Planning
36	Solano County Water Agency	Solano Subbasin Conjunctive Use	Planning
37	Solano County Water Agency	Southwestern Sacramento Valley Basin/Solano Subbasin Groundwater-Surface Water Flow Model to Evaluate Recharge, Conjunctive Water Use, and Future Deep Zone Pumpage	Planning
38	Solano County Water Agency	Source water protection for Delta water sources	Planning
39	Solano County Water Agency	Source water protection for Putah Creek watershed	Planning
40	Solano County Water Agency	Suisun Valley Flood Management	Planning
41	Solano County Water Agency	Solano Project Terminal Reservoir Seismic Mitigation	Implementable Project
42	Solano County Water Agency	Ulatis Flood Control Channel Grade Control	Implementable Project
43	Solano County Water Agency	Wetland Restoration Research and Impacts to Source Water Quality.	Planning
44	City of Clearlake	City of Clearlake Stormwater Management Plan (SWMP), Storm Drainage and Flood Control Project Proposal	Planning
45	City of Woodland / floodSAFE Yolo Pilot Program	Lower Cache Creek Flood Risk Reduction Project	Feasibility Study
46	Colusa County Resource Conservation District	Bear Creek Habitat Enhancement	Planning

WESTSIDE IRWM PROJECT COMPARISON

MATRIX

Project No.	Lead Agency /Organization	Project Title	Project Type
47	Cortina Band of Wintun Indians	Increasing water quantity and quality for public health and adequate ability to survive in Colusa Co.	Planning
48	Crescent Bay Improvement Company	Crescent Bay Improvement Company	Implementable Project
49	Dixon Regional Watershed Joint Powers Authority	Dixon Main Drain / V-drain Enlargement Project	Implementable Project
50	Dixon Regional Watershed Joint Powers Authority	Eastside Drain	Implementable Project
51	Dixon Resource Conservation District	Storm Flow Reduction From Agricultural Lands North of Interstate 80	Planning
52	Lake County Water Resources Department	Middle Creek Flood Damage Reduction and Ecosystem Restoration Project	Implementable Project
53	Lake County Water Resources Department	Develop and Implement an Interagency Communication and Coordination Program	Planning
54	Lake County Water Resources Department	Increase Reuse of Treated Wastewater	Planning
55	Lake County Water Resources Department	Increase water conservation in new developments and remodeling.	Planning
56	Lake County Water Resources Department	Increase Water Conservation Education	Planning
57	Lake County Water Resources Department	Update Cost/Benefit analysis for Lakeport Dam	Feasibility Study
58	Lake County Water Resources Department	Review / Revise Wetlands Policies and Ordinances	Planning
59	Lake County Water Resources Department	Restore stream channel hydrology and related riparian and aquatic habitats	Planning
60	Lake County Water Resources Department	Develop and implement Lake County Clean Water Program	Planning
61	Lake County Water Resources Department	Continue Expansion of Area Wastewater Treatment System Capital Improvement Program	Planning
62	Lake County Water Resources Department	Remediation of Sulphur Bank Mercury Mine	Implementable Project
63	Lake County Water Resources Department	Improve Wastewater Treatment for Unsewered Areas	Planning
64	Lake County Water Resources Department	Expand Programs to Prevent Illegal Waste Disposal	Planning
65	Lake County Water Resources Department	Improve Watershed Roads and Trails to Reduce Soil Erosion.	Planning
66	Lake County Water Resources Department	Implement Lake County Community Wildfire Protection Plan	Planning
67	Lake County Water Resources Department	Develop and Implement Habitat Improvement Plan for Clear Lake Native Fish.	Planning
68	Lake County Water Resources Department	Identify and Protect Important Wildlife Habitat Areas in Clear Lake	Planning
69	Lake County Water Resources Department	Identify and Protect Important Native Fish Spawning Areas in Clear Lake Tributaries	Planning
70	Lake County Water Resources Department	Improve Lake Access and Public Amenities	Planning
71	Lake County Water Resources Department	Implement Konocti Regional Trails Plan including Water Trails	Planning
72	Lake County Water Resources Department	Support and Expand Ecotourism Opportunities	Planning
73	Lake County Water Resources Department	Improve Water Resources Library/ Information Access	Planning
74	Lake County Water Resources Department	Implement Invasive Mussel and Snail Infestation Prevention Program	Planning
75	Lake County Water Resources Department	Pursue Cache Creek Flow Enhancement Project	Planning
76	Lake County Water Resources Department	Implement Floodplain Development Restrictions	Planning
77	Lake County Water Resources Department	Reduce Flood Damage in Developed Areas	Planning
78	Lake County Water Resources Department	Update Habitat Protection Elements in Lake County Shoreline Ordinance	Planning
79	Lake County Water Resources Department	Satellite Remote Sensing for Nutrients in Clear Lake	Planning
80	Lake County Water Resources Department	Clear Lake Water Quality Assessment	Planning
81	Lake County Water Resources Department	Coordinate Current Watershed Monitoring Programs	Planning
82	Lake County Water Resources Department	Improve Clear Lake Watershed Monitoring Programs to Meet TMDL Objectives	Planning
83	Lake County Water Resources Department	Develop Volunteer Watershed Monitoring Program	Planning
84	Lake County Water Resources Department	Increase Clear Lake Watershed Education and Outreach	Planning
85	Lake County Water Resources Department	Algae Bloom Mitigation Education	Planning
86	Lake County Water Resources Department	Develop Watershed Education Program for Off Highway Vehicle Users	Planning
87	Lake Berryessa Resort Improvement District	LBRID Wastewater Storage Pond and Disposal Improvements	Planning
88	Lake Berryessa Resort Improvement District	Water Tank Replacement Project	Implementable Project
89	Lake County Special Districts	Soda Bay Water System Improvements	Implementable Project
90	Napa Berryessa Resort Improvement District	NBRID Water Treatment Plant Replacement	Implementable Project
91	Napa Berryessa Resort Improvement District	NBRID Wastewater Storage Pond and Disposal Improvements	Implementable Project
92	Napa Berryessa Resort Improvement District	NBRID Wastewater Treatment Plant Replacement	Implementable Project
93	Rural Community Assistance Corporation	Rural Disadvantaged Community (DAC) Partnership Project	Planning

WESTSIDE IRWM PROJECT COMPARISON

MATRIX

Project No.	Lead Agency /Organization	Project Title	Project Type
94	Rural Community Assistance Corporation	Small Community Wastewater Management	Planning
95	Reclamation District 2035	Sacramento River Joint Intake Project	Implementable Project
96	0	Not Used	
97	0	Not Used	
98	Reclamation District No. 2068	Canal Headworks Metering	Planning
99	Reclamation District No. 2068	Agricultural Tail Water Reuse Program	Feasibility Study
100	Reclamation District No. 2068	Irrigation Billing / Irrigation Management System Improvements	Planning
101	Reclamation District No. 2068	RD 2068 Levee Slope Modification	Planning
102	Reclamation District No. 2068	SCADA Implementation	Planning
103	Reclamation District No. 2068	Solano Subregion Groundwater Investigations	Planning
104	Reclamation District No. 2068	Pump Station No. 1 and Upstream Drainage Tributary Inflow Metering	Planning
105	Solano Resource Conservation District	Solano County Riparian Habitat Restoration and Enhancement Project	Planning
106	Solano Resource Conservation District	Waterway Management for Improved Water Quality and Wildlife Habitat	Planning
107	Tuleyome, Inc.	Abandoned Mines Remediation Plan for the Cache Creek and Putah Creek Watersheds	Planning
108	Tuleyome, Inc.	Sulphur Creek Mercury and Sediment Reduction Project	Implementable Project
109	Tuleyome, Inc.	Elgin Mine Drainage Water Treatment Project	Planning
110	Woodland-Davis Clean Water Agency	Davis-Woodland Water Supply Project	Implementable Project
111	West Sacramento Area Flood Control Agency	Deep Water Ship Channel East Levee Repair	Planning
112	West Sacramento Area Flood Control Agency	Deep Water Ship Canal Navigation Levee Repair	Planning
113	West Sacramento Area Flood Control Agency	Port of West Sacramento North and South Levee Repair	Planning
114	West Sacramento Area Flood Control Agency	Sacramento River Levee Repair	Planning
115	West Sacramento Area Flood Control Agency	Sacramento River Recreational Trail	Planning
116	West Sacramento Area Flood Control Agency	Sacramento Bypass-Yolo Bypass Levee Repair	Planning
117	West Sacramento Area Flood Control Agency	West Sacramento South Cross Levee Repair	Planning
118	Yolo County Flood Control and Water Conservation District	Conjunctive Water Use Program	Implementable Program
119	Yolo County Flood Control and Water Conservation District	Moore Siphon Reliability/Restoration Project	Implementable Project
120	Yolo County	Yolo County Airport Drainage Plan	Planning
121	Yolo County	Analysis of BDCP's Yolo Bypass Conservation Measure and Other Measures	Feasibility Study
122	Yolo County, Natural Resources Division	Cache Creek Parkway Plan	Planning
123	Yolo County	Clarksburg Flood Protection Feasibility Study	Feasibility Study
124	Yolo County Parks	Lower Cache Creek Campground and Habitat Restoration	Implementable Project
125	Yolo County	Methylmercury Impacts Analyses for the Yolo Bypass	Feasibility Study
126	Yolo County Resource Conservation District	Implementation of the Cache Creek Watershed Invasive Weed Management Plan	Implementable Project
127	Yolo County Resource Conservation District	Agricultural Drain, Slough and Canal Riparian Habitat Enhancement	Planning
128	Lake Berryessa Resort Improvement District	Program to Prevent Wastewater Discharges	Planning
129	Putah Creek Council	Native Plant Nursery to Support Putah-Cache Ecotype Restoration	Implementable Project
130	Putah Creek Council	Pollution Prevention and Watershed Education Project	Implementable Project
131	Yolo Basin Foundation	Pacific Flyway Center/Delta Gateway	Planning
132	Yolo Basin Foundation	Lower Putah Creek Restoration from Toe Drain to Putah Creek Diversion Dam (Yolo Bypass Wildlife Area Element)	Implementable Project
133	Yolo Basin Foundation	Yolo Bypass Wildlife Area Public Use Improvements	Implementable Project
134	Proposed by RWMG	Climate Change Adaptation Study	Planning
135	Lake County Water Resources Department	Complete and Implement Adobe Creek Conjunctive Use Plan	Implementable Project
136	Lake County Water Resources Department	Implement Clear Lake Integrated Aquatic Management Plan	Implementable Program
137	Lake County Water Resources Department	Implement Lake County Weed Management Plan	Implementable Project

NAPA RIVER STEELHEAD AND SALMON MONITORING PROGRAM

2011-2012 SEASON



ADULT STEELHEAD IN MILLIKEN CREEK (MARCH 9, 2012)

SEPTEMBER, 2012



NAPA COUNTY RESOURCE CONSERVATION DISTRICT

1303 JEFFERSON ST. SUITE 500B

NAPA, CALIFORNIA 94559

WWW.NAPARCD.ORG

JONATHAN KOEHLER
SENIOR BIOLOGIST
(707) 252 – 4188 x 109
JONATHAN@NAPARCD.ORG

PAUL BLANK
SENIOR HYDROLOGIST
(707) 252 – 4188 x 112
PAUL@NAPARCD.ORG

SUMMARY

The Napa County Resource Conservation District (RCD) conducted adult salmon and steelhead spawner surveys, juvenile snorkel surveys, and outmigrant trapping with a rotary screw trap (RST) and fyke nets during the fall 2011/winter 2012 adult spawning period and the spring 2012 juvenile rearing and outmigration period. No adult salmon or steelhead were observed during spawner surveys in the mainstem Napa River and three tributary streams. This was likely due to a near complete lack of rainfall during the fall of 2011 and early winter 2012. Two adult steelhead were captured in Milliken Creek during outmigrant trapping in spring 2012, indicating steelhead spawning likely occurred later in the season, after we had completed our spawner surveys.

The rotary screw trap was operated for 49 days during the 2012 season, and the total catch was comparable with previous years. The capture of juvenile Chinook salmon in the RST indicated that some adult salmon were able to successfully spawn, despite poor hydrologic conditions. Chinook abundance has fluctuated substantially from year to year during our four years of monitoring, suggesting that the population is likely small and unstable. In contrast, steelhead smolt abundance and size was similar to what we have observed in previous years, suggesting that steelhead production is fairly stable from year to year. During the past four years, steelhead smolt production from the Napa River has shown a stable or slightly increasing trend.

Snorkel surveys were carried out in spring 2012. No juvenile Chinook salmon were observed in the sampling reaches, indicating that spawning was limited to the downstream-most reaches of the Napa River. In previous years, peak spawning activity has occurred much further upstream, so the spawning distribution observed this year was likely attributed to a lack of access to preferred upstream spawning areas. Juvenile steelhead were observed in relatively high densities during our Napa River snorkel surveys, indicating that steelhead spawning occurred in the mainstem.

Fyke net sampling was conducted for a total of 45 days in Milliken and Napa Creeks. We captured 11 native and six non-native fish species in Milliken Creek and six native and zero non-native fish species in Napa Creek during the spring 2012 sampling period. Steelhead catch rates severely declined as flows diminished in May. Two adult steelhead were caught and released in the Milliken fyke net.

Evidence of a coho salmon from the Napa River was found in the 2010 RST tissue samples. The specimen was originally identified as a Chinook salmon smolt in the field, but the National Marine Fisheries Service (NMFS) determined the fish was a coho salmon through genetic analysis. Due to similarities in appearances of juvenile salmonids, and the fact that field staff would not expect coho salmon in the Napa River basin, it is possible that other coho may have been missed. Ongoing genetic analysis is underway by NMFS to confirm the finding, and RCD is seeking funds to analyze additional samples. There are approximately 1,500 fin clips that have not yet been analyzed due to lack of funding.

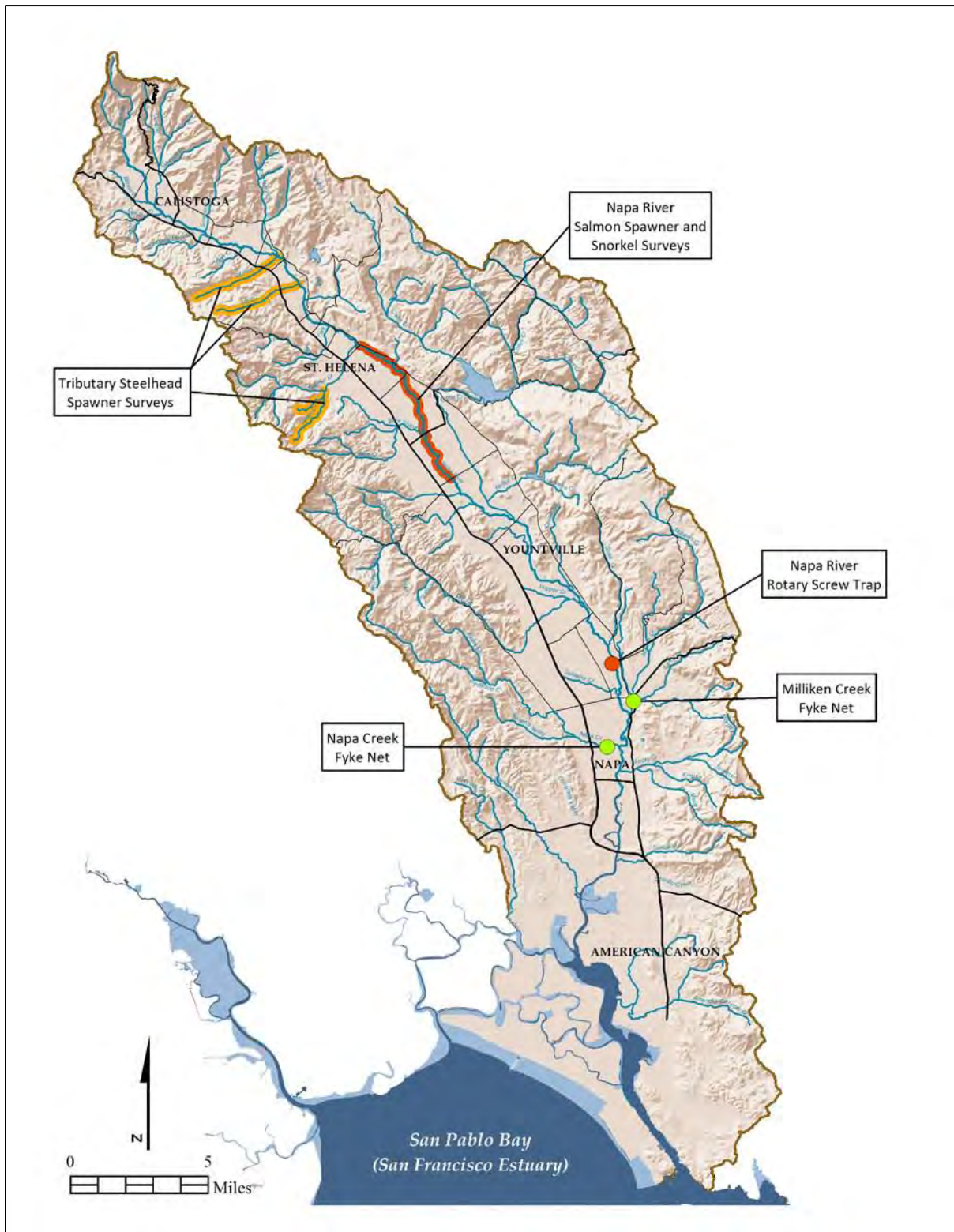


Figure 1. 2011-2012 steelhead and salmon monitoring locations in the Napa River watershed



A Tradition of Stewardship
A Commitment to Service

Agenda Date: 9/11/2012

Agenda Placement: 7J

NAPA COUNTY BOARD OF SUPERVISORS Board Agenda Letter

TO: Board of Supervisors

FROM: Lederer, Steven - Director of Public Works
Public Works

REPORT BY: Jeff Sharp, PRINCIPAL PLANNER - 707-259-5936

SUBJECT: Approval of Professional Services Agreement to develop a Total Maximum Daily Load (TMDL) tracking and accounting system

RECOMMENDATION

Director of Public Works requests approval of and authorization for the Chairman to sign an agreement with Tetra Tech Inc. for a maximum of \$223,000 for the term September 11, 2012 through June 30, 2014 for consultant services to develop a monitoring and reporting strategy for TMDL implementation in the Napa River watershed as funded under U.S. EPA Grant Agreement No. W9-00T60801-2.

EXECUTIVE SUMMARY

Napa County is the recipient of a grant from U.S. EPA, which is funding five interrelated sub-projects all designed to support implementation of the Napa River Sediment TMDL. The grant was originally awarded to the County in 2011. Since then, the EPA has provided additional incremental funding for a new grant total of \$1,500,000. On March 13, 2012 the Board approved amendments to the EPA grant agreement, budgeted appropriations and designated match revenues. The requested agreement supports reimbursable consultant work outlined under sub-project five (Task 5) of the grant; which is to develop a TMDL tracking and accounting system to identify progress, prioritize implementation, inform management strategies, and communicate results relating to the required and recommended implementation actions prescribed in the Napa River Sediment Reduction and Habitat Enhancement Plan adopted as part of the Water Quality Control Plan for the San Francisco Bay Basin.

FISCAL IMPACT

Is there a Fiscal Impact?	Yes
Is it currently budgeted?	Yes

Where is it budgeted?	12205 Public Works Projects - Program No. 11013 - Napa River TMDL Implementation
Is it Mandatory or Discretionary?	Discretionary
Discretionary Justification:	The County applied for, and received, a grant to support implementation of the Napa River Sediment TMDL. The TMDL is a regulatory tool adopted by the San Francisco Bay Regional Water Quality Control Board intended to improve the water quality and restore the beneficial uses of the Napa River. Various Measure "A" authorized projects for the unincorporated area are being funded simultaneously by this grant and matching funds have been approved previously by the Board. Approval of the proposed agreement supports previously approved work under the grant in collaboration with local partners and ultimately assists with the County's overall TMDL implementation in the Napa River watershed.
Is the general fund affected?	No
Future fiscal impact:	The grant term and funded project is scheduled to be conducted through June 30, 2014. Appropriations will be budgeted accordingly in future fiscal years.
Consequences if not approved:	Loss of grant revenues, lack of tracking and accounting of public and private work/projects intended to improve water quality and aquatic habitat conditions in the Napa River, regulatory enforcement by the EPA and/or State Water Board for not demonstrating compliance with the Napa River TMDL, and potential continued degradation the Napa River water quality and its beneficial uses.
Additional Information:	\$175,000 of the work scope covered by this agreement will be funded by EPA grant funds and \$48,000 will be funded by County unincorporated area Measure "A" funds that are included in Amendment No. 18 of the Measure "A" funding agreement with the Napa County Flood Protection and Watershed Improvement Authority.

ENVIRONMENTAL IMPACT

Categorical Exemption Class 6: It has been determined that this type of project does not have a significant effect on the environment and is exempt from the California Environmental Quality Act. The project will not impact an environmental resource of hazardous or critical concern, has no cumulative impact, there is no reasonable possibility that the activity may have a significant effect on the environment due to unusual circumstances, will not result in damage to scenic resources, is not located on a list of hazardous waste sites, cause substantial adverse change in the significance of a historical resource or extract groundwater in excess of the Phase 1 groundwater extraction standards as set by the Department of Public Works. [See Class 6 ("Information Collection") which may be found in the guidelines for the implementation of the California Environmental Quality Act at 14 CCR §15306.]

BACKGROUND AND DISCUSSION

In January 2011, the County applied for federal grant funds under the San Francisco Bay Water Quality Improvement Fund from the U.S. Environmental Protection Agency (EPA) to implement the adopted Napa River Sediment Total Maximum Daily Load (TMDL) by reducing fine sediments and polluted runoff within the Napa River watershed and restoring habitat and beneficial uses. Five sub-projects were identified in the grant application:

- 1) Construction of Phase 3 (Reach 4) of the Napa River Rutherford Reach Restoration;
- 2) Final design of Phase 1 of the Napa River Oakville to Oak Knoll Restoration;
- 3) Education and development of Ranch Water Quality Plans (RWQPs) for cattle ranchers;
- 4) Assessment and development of Best Management Practices (BMPs) for County roads and stream crossings;
and
- 5) Development of a TMDL tracking and accounting system for the Napa River watershed.

EPA awarded the County a grant of \$1,500,000 which was to be incrementally funded based on federal budget availability. Based on the notice of grant award, the grant and match funds for sub-project 1 and sub-project 2 were included in the Public Works Capital Improvement Program budget adopted by the Board for FY 11-12. In December 2011, EPA prepared an amendment to the funding commitment, bringing the total EPA grant funds to the full award of \$1,500,000. This amendment provided sufficient federal funds to budget sub projects 3, 4 and 5. The Board approved the grant amendment and budget appropriations in support of the amendments on 3/13/2012. In total, the County and its partners are matching \$1,765,000 for a total project cost of \$3,265,000 to implement all five sub-projects during the period from April 2011 through June 2014. This agenda item pertains to approval of a necessary consultant agreement to perform work outlined in sub-project 5 of the grant.

Sub-project 5 is a project being implemented by the County to develop a TMDL tracking and accounting system for the Napa River Watershed. The objectives of the tracking and accounting system are: 1) identify progress in achieving TMDL goals; 2) prioritize implementation actions; 3) inform management strategies, and 4) communicate the results to stakeholders, regulatory agencies, grant funders and decision makers. EPA has awarded \$200,000 of the grant for this subproject. The Napa County Resource Conservation District (NCRCD) is a named partner in the grant and will participate with the County in establishing the TMDL tracking and accounting system framework. An agreement with NCRCD was approved by the Board on 3/13/2012, which allocated \$25,000 of the grant funding to assist in these efforts. A request for proposals (RFP) in support of sub-project 5 work was circulated on 5/18/2012 and consultant interviews were held on 7/24/2012, resulting in the selection of Tetra Tech, Inc. as the most qualified vendor for this work. The remaining grant funds for this sub-project in the amount of \$175,000 will be used to finance the grant-specified work scope as part of the Professional Services Agreement presented for Board approval. An additional \$48,000 of work included in the agreement covers a grant-optional sub-task that is proposed to be funded by County unincorporated Measure A funds. The scope of work for the optional task will provide improved decision-making tools to help prioritize future monitoring and project implementation actions associated with TMDL implementation actions.

SUPPORTING DOCUMENTS

None

CEO Recommendation: Approve

Reviewed By: Molly Rattigan

Stormwater Management Program 2011-2012 Annual Report



Napa County Stormwater Pollution Prevention Program