

AGENDA

JOINT GRAC-WICC SPECIAL MEETING

Thursday, July 26, 2012, 4:00 – 5:30 pm



Location: Yountville Community Center, 6516 Washington St., Yountville, CA

Meeting Objectives:

- (1) Provide an opportunity for the Napa County Groundwater Resources Advisory Committee (GRAC) and the Napa County Watershed Information Conservancy and Center (WICC) to share updates and discuss their respective work programs.
- (2) Discuss opportunities for collaboration between the WICC and the GRAC on community outreach efforts regarding the Napa County Groundwater Monitoring Plan.

| TIME | AGENDA ITEM | PRESENTER(S) |
|---------|--|--|
| 4:00 pm | Call to Order and Roll Call Welcome & Introductions | Tucker Catlin , Vice-Chair, GRAC Mitchell Klug , Chair, WICC |
| 4:10 pm | Update on WICC Activities <ul style="list-style-type: none"> • Overview of WICC Program • Education & Outreach Efforts • Questions and Discussion | Patrick Lowe , Natural Resources Conservation Program Manager Public Works/Flood Jeff Sharp , Principal Watershed Resources Planner Public Works/Flood |
| 4:25 pm | Update on GRAC Activities <ul style="list-style-type: none"> • Overview of GRAC Purpose and Work Plan • Update on Groundwater(GW) Scope of Work and draft GW Monitoring Plan Goals/Objectives/Priorities • Next Steps... • Questions and Discussion | Hillary Gitelman , Director Napa County PBES Vicki Kretsinger Grabert , LSCE Luhdorff & Scalmanini Consulting Engineers Patrick Lowe , Natural Resources Conservation Program Manager Public Works/Flood |
| 5:00 pm | Strategizing for Public Outreach for the Napa County Groundwater Monitoring Plan <ul style="list-style-type: none"> • Presentation of GRAC Communication/Education Materials for public outreach • Discussion of public outreach strategies involving the GRAC and WICC and opportunities for collaboration • Questions and Discussion | Michael Haley , GRAC Member Ad Hoc Committee Spokesperson Deborah Elliott , Water Resources Specialist, Public Works/Flood Patrick Lowe , Natural Resources Conservation Program Manager Public Works/Flood |
| 5:25 pm | Public Comment | |
| 5:30 pm | Informational Announcements Adjournment to the Next Meeting | Tucker Catlin , Vice-Chair, GRAC Mitchell Klug , Chair, WICC |
| 5:35 pm | GRAC and WICC Member Reception | |

(Blank page inserted for 2-sided printing)

WICC Board

The WICC Board of Directors serves as an advisory committee to Napa County Board of Supervisors. The role of the WICC is to assist the County Supervisors in their decision-making process and serve as a conduit for citizen input by gathering, analyzing and providing recommendations related to the management of watershed resources. The WICC Board is comprised of 17 members representing a broad range of community interests and includes representatives from each of the County's incorporated cities/town.

The WICC Board has a responsibility to publicly evaluate and discuss matters relating to watershed restoration projects and resource protection activities, coordination of land acquisition, and development of a long-term watershed resource management programs. The WICC Board also provides public outreach and education, monitoring coordination, inventory and assessment of watershed resources, and watershed data management services.

Visit www.napawatersheds.org to learn more about what the WICC and sign-up on the WICC website to stay informed of watershed happenings in Napa County!

Napa County Board of Supervisors



A Tradition of Stewardship
A Commitment to Service

The WICC is funded by Napa County and serves as an Advisory Committee to the County Board of Supervisors.

watershed

information center & conservancy
of napa county

An online resource to educate and support the community in its efforts to maintain and improve the health of Napa County's watershed lands.



Contact Information

R. Patrick Lowe, Deputy Planning Director
Jeff Sharp, Watershed Coordinator
Conservation, Development and Planning
1195 Third Street, Suite 210
Napa, California 94559
Telephone: (707) 253-4417
Fax: (707) 253-4336
Email: info@napawatersheds.org

Acknowledgements

Napa Co. Flood & Water Conservation Dist.
Napa County Resource Conservation Dist.
Napa Co. Public Works
California Dept. of Conservation
California Dept. of Water Resources
U.S. Army Corps of Engineers

And many others who have contributed to the wealth of information available on the WICC WebCenter.

Photo Credits

Jeff Tangen: Cover, back & Napa vineyard
Todd Adams: Fish, butterfly and working in the watershed.

Watershed Information Center & Conservancy (WICC)

1195 Third Street, Suite 210
Napa, California 94559



www.napawatersheds.org

The WICC WebCenter

www.napawatersheds.org

"The WICC WebCenter supports an on-going conversation among all of the county's watershed participants. It is an important community networking tool and resource for our research and education efforts. Visit the WICC WebCenter—it's your best source for the latest information about our watershed."

Mark Luce, WICC Board Member
2nd District Supervisor,
Napa County Board of Supervisors

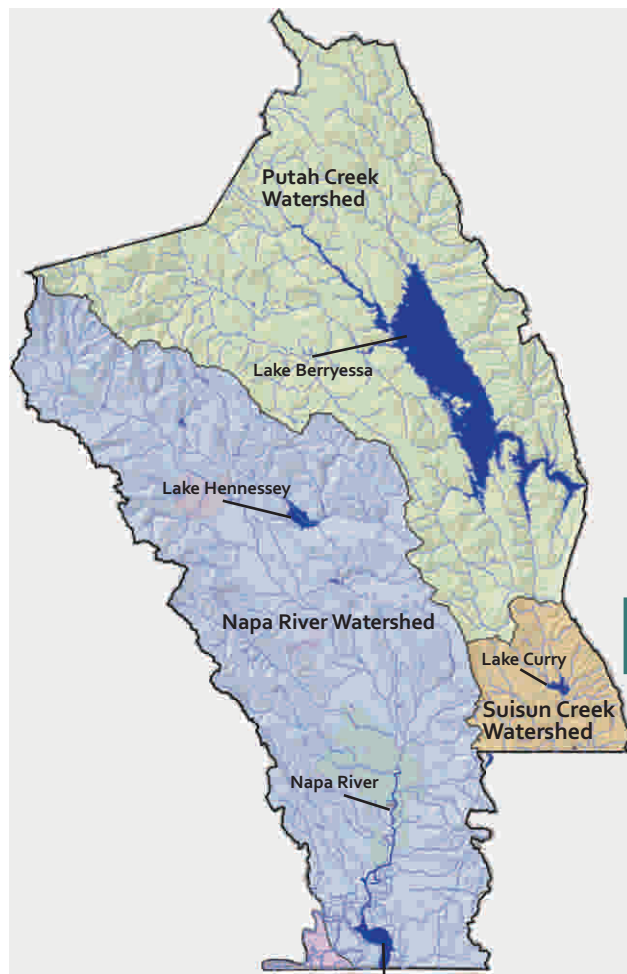
The WICC WebCenter encourages collaboration, cooperation, and consistency among those working in the watersheds of Napa County by coordinating and facilitating partnerships among individuals, agencies, and organizations involved in improving watershed health, supporting watershed research activities and providing watershed information and education. The WICC WebCenter is the place to stay informed, contribute, and find support for watershed activities and organizations.



WebCenter Features and Services

An innovative online community, the WICC WebCenter enhances the coordination of and participation in watershed projects. It supports scientific involvement, provides online communications and library services designed to facilitate community awareness and engagement, and information management and planning support tools that help to:

- centralize watershed news and information;
- promote watershed education and public involvement;
- coordinate watershed events and activities;
- encourage information sharing;
- share and coordinate watershed monitoring;
- connect with regional and statewide watershed efforts through a searchable knowledge-based database;
- coordinate the efforts of volunteers, agencies and organizations;
- assist in identifying high-priority information gaps;
- integrate online mapping;
- provide resources for those working in Napa County's watersheds, including teachers, parents and the community.



The WICC WebCenter is an online community portal established to guide and support community efforts to maintain and improve the health of Napa County's watershed lands. It provides information about Napa County's watersheds, such as watershed data, reports and monitoring information, a library of watershed research, and useful interactive maps. It highlights organizations participating in watershed enhancement and protection projects and encourages citizens and organizations to get involved and stay informed.

Visit the WICC WebCenter
www.napawatersheds.org

A resource for all those working in Napa County's watersheds—scientists, educators, policymakers, landowners and the community—the WICC WebCenter will help you learn about and participate in efforts to improve the health of Napa County's watershed lands.

The WICC WebCenter allows you to:

- access public information provided by groups working in the watersheds;
- create, save and share personal map views of your neighborhood, watershed, streams, etc.;
- stay informed and sign-up to receive email notices, control the types of information you receive and how often;
- develop a personal online file cabinet, called a "clickboard", that allows you to easily store and retrieve information on the site, and to personalize links to information of interest;
- participate in online discussion forums and polls.

Information Services for Watershed Groups

Register your watershed group to get direct access to the interactive information and communication tools on the site. You can upload information to the library and share it with others, create calendars, add information to online maps, and create a web presence for your group.

Think of the WICC WebCenter as your group's communication manager, administrative assistant and information management department all rolled into one online community resource.

Contact Us

For more information, please contact the Conservation, Development and Planning Dept.
1195 Third Street, Suite 210,
Napa, California 94559; Telephone:
(707) 253-4417; Fax: (707) 253-4336;
Email: info@napawatersheds.org

Our Watersheds

The Napa River Watershed drains the Western half of Napa County via numerous tributaries along a 55-mile run from the headwaters of Mt. St. Helena to the San Pablo Bay. From its steep upper reaches to its tidal low lands, the Napa River Watershed supports a wide variety of habitats for fish and wildlife.

The Putah Creek Watershed, which includes Lake Berryessa, Chiles Valley and Pope Valley, supports a unique assemblage of serpentine chaparral, grasslands, oak savannas, oak and mixed oak/coniferous woodlands, and riparian, freshwater lake and cliff habitats.

The Suisun Creek Watershed drains the southeastern corner of Napa County. It supports farms, ranches and vineyards, oak woodlands and grassland habitats, as well as Lake Curry, a water supply reservoir for Solano County.



Projects & Activities

In-depth information, data and resources for projects and activities in Napa County's watersheds.

Library

A central location for individuals or groups to post public reports, project descriptions, news and information relating to the watershed.

Maps

Interactive maps show fish and wildlife habitat, groundwater and water supplies, fish barriers, historical ecology and more. Use the map tools to create, print, save or share your personalized map views with others. Link events, discussions, documents, images, videos, news items, data or websites to any of the WICC online maps.

Calendars

View or contribute to a master calendar of watershed events and activities and manage group activity calendars.

Stay Informed

Sign up to receive customized email notices about events or information of interest to you.

Resources for Teachers

Access a variety of educational tools, resources and lesson plans. WICC is a great resource for teachers and parents.



"We invite the community at large, both individuals and organizations, to collaborate and share information to help maintain and improve the health of our watersheds."

Charles Slutzkin, Former WICC Board Chairman, Project Manager, Napa Valley Gateway Business Park





GRA Committee Work Plan

Purpose:

The GRAC's duties and responsibilities are to assist staff and consultants with recommendations regarding : (a) the synthesis of existing information and identification of critical data needs; (b) the development and implementation of an ongoing groundwater monitoring program; (c) the development of revised well pump test protocols and related revisions to the County's groundwater ordinance; (d) the conceptualization of hydrogeologic conditions in various areas of the County and an assessment of groundwater resources as data becomes available; (e) the development of groundwater sustainability objectives that can be achieved through voluntary means and incentives and next steps; and (f) building community support for these activities.

Meeting Time & Location:

The GRAC will meet every other month at 2:00 PM on the 4th Thursday of the month (except in December, when the GRAC meets on the 2nd Thursday). All meetings will be held at 1710 Soscol Ave, Suite 3, Napa, in the Napa County Agricultural Commissioner/UCCE conference room.

Work Plan Overview: The following provides a topical overview of scheduled meetings.

October 2011: Introduction & background

- Welcome/introduction/round table
- Organizational Items (bylaws, elect Chair/Vice Chair, calendar, ground rules, Brown Act)
- County Policies regarding groundwater
- Stakeholder assessment findings
- Groundwater Study Results Part 1
- Other Business (CASGEM participation & consultant selection)

December 2011: What we know & what we don't know

- Organizational items (cont.)
- Groundwater Study Results Part 2
- Confidentiality protocol for groundwater data/information
- CASGEM program requirements, County compliance & next steps
- Volunteer well monitoring & public outreach to date
- Discuss Draft Plan for Public Outreach/Education
- Other Business (Consultant contract & schedule)

February 2012: Next Steps: Consultant Scope of Work, Monitoring & Outreach

- Overview of Groundwater Concepts and Sonoma County GW Monitoring program

02-23-2012 Update

- Review/discuss and adopt updated GRAC Workplan/Schedule
- Review/discuss Groundwater Study Recommendations (covered in Oct and Dec)
- Review/discuss Confidentiality Memo and Update to CASGEM Participants
- Review/discuss Consultant Scope of Work and Schedule and Geographic Focus Areas
- Review/discuss revised Plan for Communication & Education, and/or refer to an Ad Hoc Committee for further development
- Monitoring wells background information/demo: , construction, function and cost
- Introduction to components of a successful groundwater monitoring program

April 2012: Draft groundwater monitoring program

- Review/discuss Communication and Education Plan from Ad Hoc Committee
- Overview of the History & Update on the Milliken-Sarco-Tulocay(MST) Basin
- Review/discuss the working draft/annotated outline groundwater monitoring program
- Review/discuss well confidentiality and potential policy for the GW Monitoring Program

June 2012: Draft groundwater monitoring program

- Review and adopt Communication and Education Plan, and begin implementation
- Review/discuss conceptualization of hydrologic conditions
- Review/discuss first draft of groundwater monitoring program
Review/discuss draft well confidentiality policy, if needed

July 2012: Joint meeting with the WICC Board & Subsequent Report to the Board of Supervisors

- Review/discuss revised groundwater monitoring program

August 2012 to June 2013:

- Complete conceptualization of hydrogeologic conditions
- Review and adopt final groundwater monitoring program
- Continue public outreach & education
- Recommend updated well pump-test standards and related changes to groundwater ordinance
Review of work plan status & accomplishments (Oct-1st Yr Completion)

August 2013 to June 2014:

- Continue groundwater monitoring program & outreach, and assess/adjust as needed
- Develop groundwater sustainability objectives and incentives
- Define next steps

August 2014 to December 2014:

- Conclude GRAC's work and make final recommendations to the Board of Supervisors



A Tradition of Stewardship
A Commitment to Service



Committee Members

Michelle Benvenuto
Tucker Catlin
Alan Galbraith
Don Gleason
Dave Graves
Michael Haley
Peter McCrea
Charles Slutzkin
Steve Soper
Marilee Talley
Bill Trautman
Jim Verhey
Susanne von Rosenberg
Duane Wall
Dale Withers

Meeting Synopsis

June 28, 2012

The Napa County Groundwater Resources Advisory Committee (GRAC) held its fifth meeting on June 28, 2012. The meeting started with a brief discussion on the GRAC mission. The GRAC agreed to adopt the Purpose as stated in the Board Resolution, number 2011-79, as the Mission Statement with minor amendments for grammatical clarity. Ms. Vicki Kretsinger Grabert, Luhdorff and Scalmanini Consulting Engineers (LSCE), presented a draft Napa County Groundwater Monitoring Plan, including proposed criteria for prioritizing groundwater level and water quality monitoring needs. Discussion focused on understanding the draft criteria and corresponding recommendations. The GRAC created an ad hoc committee to assist staff and the consultant further refine the criteria in preparation for the August meeting. Mr. Michael Haley, GRAC ad hoc Public Outreach and Education Committee, presented a revised communication and education plan and corresponding materials. Members considered the plan and materials as working drafts, noting that materials would continue to need to be refined and in some cases developed as the monitoring plan and related efforts developed. Revised materials will be available for the joint meeting on July 26, 2012 with the Board of the Watershed Information Center & Conservancy (WICC) of Napa County; the GRAC also reviewed the proposed agenda for this meeting. County staff updated members on recent efforts to secure State grant funding for monitoring wells; the reorganization of the County's Public Works, Environmental Management, and Planning Departments; and on communication provided to California Statewide Groundwater Elevation & Monitoring (CASGEM) Program participants regarding data confidentiality.

Please see the GRAC's webpage for the June 28, 2012 meeting presentations and handouts (www.countofnapa.org/bos/grac).

1195 Third Street,
Suite 210
Napa, CA
94559

Tel: 707-253-4417
Fax: 707-253-4336

(Blank page inserted for 2-sided printing)



A Tradition of Stewardship
A Commitment to Service



DRAFT COMMUNICATION AND EDUCATION PLAN

Draft Version 5 - July 26, 2012

I. Purpose and Overview

The purpose of this plan is to serve as a strategic guide for the public communication and education activities of the Napa County Groundwater Resources Advisory Committee (GRAC). The **communication goal** of the plan is to ensure that interested parties, and Napa County residents as a whole, are well-informed of the deliberations and activities of the GRAC. The **education goal** of the plan is to increase the understanding of groundwater resources so that interested parties and Napa County residents as a whole have a factual basis for discussion and decision making. Key elements of this plan include a set of objectives and guiding principles, a list of potential audiences and partners, and fundamental messages. A series of communication and education strategies are also provided. The last element of the plan includes a recommendation for periodic evaluation of the plan's implementation and effectiveness.

II. Objectives

- A. Ensure that interested parties and residents as a whole are aware of the GRAC's work, schedule, progress, and deliberations, and have opportunities to provide input.
- B. Expand participation in the County's voluntary groundwater level monitoring efforts and potential optional groundwater quality monitoring.
- C. Establish a common understanding of groundwater resources in the County, including conditions and trends evidenced by monitoring data and scientific analyses.
- D. Support informed public dialogue and policy decision-making regarding groundwater resources in Napa County.
- E. Establish consensus from the GRAC members on the Communication and Education Plan and its purpose.

III. Guiding Principles

- A. Be proactive and utilize GRAC member's existing networks to help locate appropriate well owners.
- B. Partner with interested groups and individuals to leverage existing communication networks and programs.
- C. Provide information and materials in a timely manner, allow interested parties to provide input and participate.
- D. Characterize messages and activities, so that interested parties in different areas hear the same messages.

- E. Tailor messages and materials to different audiences to increase their effectiveness.

IV. Priorities

The following is a prioritized list of communication and education actions:

- 1) Develop a GRAC brochure (folded 11x17 tabloid) and informative slip-sheets (8.5x11 maps, current activities, report summaries, staff contacts and GRAC membership...).
- 2) Actively reach out to well owners to participate in voluntary groundwater level monitoring in high priority sub-areas.
- 3) Utilize outreach and education to attract well owners to participate in the voluntary groundwater level monitoring program.
- 4) Identify education and communication partners and partnerships (particularly those identified in the 2010 Groundwater Stakeholder Assessment).
- 5) Maintain and promote use of GRAC website (<http://www.countyofnapa.org/bos/grac/>).

V. Audiences and Partners

Groundwater resource issues involve a broad range of geographical and interest-based audiences and partners. Below is a partial list of likely audiences:

- 1) Well owners who voluntarily participate in groundwater level monitoring and water quality monitoring (which may become available at a later date);
- 2) Landowners and other interested parties in under represented groundwater basins identified by the CA Dept. of Water Resources (Pope Valley, Clearlake Pleistocene Volcanic Area, and Berryessa Valley groundwater basins);
- 3) Landowners and other interested parties in the Napa-Sonoma Valley groundwater basin, including the Milliken-Sarco-Tulocay, Angwin, Carneros, Calistoga, St. Helena, Yountville, and Napa sub-areas;
- 4) County residents (incorporated and unincorporated);
- 5) Agricultural and wine industry groups;
- 6) Environmental and park/open-space groups;
- 7) Residential and commercial developers;
- 8) Community groups interested in water resources;
- 9) Landowner/Homeowner groups and associations;
- 10) Public agencies (local, regional, state, federal); and
- 11) Elected officials.

In general, messages and materials will need to be addressed to County residents as a whole. However, in many cases information should be tailored to specific audiences. Additional special

audiences will need identification; for example the elderly, minorities, non-English speakers and disadvantaged communities¹.

Some members of the audiences listed above may choose to support the GRAC's communication and education efforts, thereby becoming GRAC partners in outreach. In the 2010 Stakeholder Assessment ([see GRAC website](#)), several organizations volunteered to use their existing networks to help share information and news with their constituencies. Creating partnerships with these organizations and use of their networks will be critical to maximizing the efficiency and effectiveness of GRAC outreach efforts. Additional partners will be solicited as GRAC activities are developed.

VI. Partners

Various partners in groundwater education and communication **may** include: local growers, professional groups and associations in priority areas throughout the County. GRAC members will utilize existing contacts as partners in education and outreach.

Partners may also include press and media outlets throughout Napa County including: local newspapers, radio and television stations.

VII. Messages

The GRAC will identify several key messages to be used for outreach and education. Examples of global messages regarding groundwater are:

- a. Groundwater is a vital water source for residential, commercial and agricultural users in Napa County.
- b. Napa County has a number of unique and hydrologically distinctive groundwater subareas.
- c. The Napa Valley Floor (St. Helena, Yountville, and Napa areas), except for the Milliken-Sarco-Tulocay (MST) Subarea, generally has stable long term trends and a shallow depth to groundwater level (10-30 feet below ground surface).
- d. High priority subareas and monitoring needs will be determined as part of the GRAC's work plan.
- e. A common fact-based understanding of groundwater resources in the County supports more informed public dialogue and public-policy decision-making. While observation helps to identify concerns, factual information and thoughtful technical analyses provides the foundation for informed decision-making.

¹ CAL. PRC 75005(g) "Disadvantaged community" means a community with a median household income less than 80% of the statewide average. "Severely disadvantaged community" means a community with a median household income less than 60% of the statewide average.

Examples of messages that will need to be tailored to match the objectives and purpose of the GRAC may include:

- f. The importance of better understanding of county-wide hydrogeologic conditions in order to better understand groundwater priority areas within Napa County.
- g. How to participate in voluntary groundwater level monitoring and optional water quality monitoring.
- h. How groundwater information will be used and refined as resources and monitoring information becomes available.
- i. What kind of groundwater data will be gathered, when and by whom, and how will it be used?
- j. What is the confidentiality of the data collected?
- k. What are the benefits to and incentives for, participants in the voluntary monitoring program?
- l. The importance of voluntary groundwater level data is to help anticipate future groundwater issues.
- m. Groundwater level data is primarily collected within the Napa Valley Floor Subareas, leaving the rest of the County unaccounted for.
- n. Groundwater quality monitoring data is more spatially distributed than groundwater level data.

Additional messages will be developed as needed for specific areas, special audiences, specific groundwater topics and actions undertaken by the GRAC.

VIII. Communication and Education Strategies

This section identifies seven primary communication and education strategies that provide a framework for more specific activities. Each strategy includes information on supporting materials, audiences that would benefit, next step timelines, potential constraints and potential partners.

- | |
|--|
| <ol style="list-style-type: none">1. Develop a standardized series of general promotional and educational brochures (press materials), as well as activity/topic-specific materials as needed. |
|--|

Materials: GRAC brochure (folded 11x17 tabloid) and informative slip-sheets (8.5x11 maps, current activities, report summaries, staff contacts and GRAC membership...), informational letters to current and potential groundwater level monitoring volunteers, newsletter articles to targeted groups, answers to frequently asked questions (all in electronic and hard copy)

Special Target Audiences: county residents and others as appropriate

Next Steps & Timelines: general promotional materials during 3rd quarter of 2012, activity and topic-specific materials in coordination with the GRAC's work plan

Constraints: need for subject matter expertise, graphic design and printing

Potential partners: none, GRAC members will work with County staff to develop materials (staff may enlist graphical support, outside printing)

2. GRAC members periodic briefing of the geographical or interest-based groups they represent, participate in, or serve as appointed members on the GRAC.

Materials: standard promotional materials mentioned above; PowerPoint presentations with talking points about work plan, progress, and milestones

Special Target Audiences: constituencies represented on the GRAC, regional and sub-regional groups, community-based groups, groups listed as potential partners

Next Steps & Timelines: identify initial dates for briefings, prepare materials, assign appropriate GRAC members

Constraints: need for consistent messaging and characterization of the GRAC's activities

Potential partners: organizations that GRAC members participate in, potential partners listed above, the GRAC members themselves

3. GRAC members and County staff conduct an annual round of briefings for elected officials and agency executive officers, including but not limited to members of the Watershed Information Center and Conservancy (WICC) Board of Napa County.

Materials: standard promotional materials mentioned above

Special Target Audiences: state legislative representatives, county supervisors, mayors and council members, federal and state agency executive officers and staff

Next Steps & Timelines: identify appropriate period for briefings and schedule well in advance (e.g., Joint GRAC-WICC meeting-July 26, 2012), identify appropriate briefing format and appropriate group (staff/GRAC members) to conduct briefings, develop key messages and supporting materials

Constraints: limited availability of elected officials and agency executive officers

Potential partners: none (GRAC members will work with County staff)

4. GRAC hosting of public workshops or other public events. Including events that may coincide with the rollout of key deliverables, such as the County's monitoring program, revised pump test protocols and related revisions to the groundwater ordinance, and groundwater sustainability objectives.

Materials: special announcements; materials to support the event activities

Special Target Audiences: Napa County residents as a whole, perhaps with identical workshops in the northern and southern parts of the County. Collaborate with industry groups to develop workshop topics. Potential topics may include best sustainable practices and water use efficiency. Showcase examples of better sustainable practices.

Next Steps & Timelines: agree upon deliverables that will need a public rollout component, the type of public input desired (e.g., comment on draft, comment on final), and a corresponding timeframe (See GRAC Work Plan)

Constraints: advance scheduling and publicity required to ensure turnout, significant logistical and administrative work, and associated costs.

Potential partners: WICC, other local organizations or educational groups listed above as potential partners

5. Use the GRAC's website (<http://www.countyofnapa.org/bos/grac/>) as an informational clearinghouse for materials associated with the GRAC meetings and general communication and education efforts.

Materials: standard promotional materials mentioned above, special meeting/workshop materials developed, and posting of existing materials developed for regular GRAC meetings and activities

Special Target Audiences: all audiences

Next Steps & Timelines: continual, the website has been official and functioning since June, 2011, redesign of the site as needed to accommodate the assimilation of information over time

Constraints: organization and accessibility as documents accumulate, staffing resources and expertise for upkeep and maintenance

Potential partners: none (County staff will maintain the website)

6. Development and maintenance of an interested-parties email and address distribution list, including denotation of parties that express an interest in partnering with the GRAC.

Materials: email and address data management software, and existing news, promotional and educational materials

Special Target Audiences: individual interested parties

Next Steps & Timelines: develop and solicit initial list during 3rd quarter of 2012, with ongoing expansion and maintenance

Constraints: staffing resources needed to maintain up-to-date entries

Potential partners: none (County staff will develop and maintain the list)

7. Proactively develop and regularly utilize relationships with key public relations, press and media outlets for the purpose of sharing news and information.

Materials: meeting synopses, statements developed by the GRAC, telephone calls, talking points, frequently asked questions

Special Target Audiences: Napa County residents as a whole

Next Steps & Timelines: County staff to identify and contact major press and media outlets as needed

Constraints: inability to control final product, need to adhere to GRAC Media Protocol
Potential partners: See potential list above

IX. Evaluation

As part of its normal business, the GRAC will periodically evaluate the effectiveness of its communication and education efforts, and revise this plan accordingly.

DRAFT

(Blank page inserted for 2-sided printing)



A Tradition of Stewardship
A Commitment to Service



Frequently Asked Questions

Specific FAQs will be used in various places (website, handouts, etc.) as appropriate.

What is groundwater?

- ▶ Groundwater is water below the ground surface contained in formations known as aquifers, and yields significant quantities of water to wells and springs.

Why is groundwater important to Napa County?

- ▶ Groundwater is a vital part of the water supply in Napa County. Many residents, businesses and crops in Napa County rely at least partially on groundwater as their water supply.

What is the Groundwater Resources Advisory Committee (GRAC)?

- ▶ The GRAC [www.countyofnapa.org/bos/grac] assists County staff and technical consultants with recommendations regarding groundwater, including data collection, monitoring, well pump test protocols, management objectives, and community support.

Who collects the well measurements and how often are measurements taken?

- ▶ Groundwater measurements are taken by the Napa County Department of Public Works or its contractor. Measurements generally take place twice per year in April and October.

Where is additional groundwater level data needed?

- ▶ Priority water level monitoring areas are currently being determined. Please see the Groundwater Monitoring Plan on the GRAC website [www.countyofnapa.org/bos/grac].

What is CASGEM - California Statewide Groundwater Elevation Monitoring Program?

- ▶ CASGEM [www.water.ca.gov/groundwater/casgem/] was developed by the State in 2009 under legislative mandate that groundwater elevations in all basins and sub-basins in California be monitored for seasonal and long-term trends. In 2010 Napa County volunteered to be the monitoring entity for basins within the County has since been designated the Countywide Monitoring entity by the State Dept. of Water Resources. Currently 18 property owners have volunteered to participate in the CASGEM program.

What is the Voluntary Groundwater Level Monitoring Program and why is it important?

- ▶ The Voluntary Groundwater Level Monitoring Program allows well owners to have the depth to groundwater level measured in their wells twice per year to improve understanding of groundwater in the County. A network of privately owned volunteer wells augments County and publicly monitored wells tracking overall groundwater elevations. Monitoring groundwater elevation helps assess the overall status of Napa County aquifers.

Will the County measure how much water I use?

- ▶ No. The amount of groundwater used will not be measured. The measurement will only document the depth to groundwater in the well (water level).

Will someone try and curtail my groundwater use if I participate in the program?

- ▶ No. The Voluntary Groundwater Level Monitoring Program is a non-regulatory, volunteer program that only measures the groundwater elevation/level in volunteer wells. Groundwater use is not being measured or monitored as part of this program.

How long is the voluntary groundwater level monitoring program anticipated to last?

- ▶ The monitoring program will last indefinitely into the future as long as funding for the program is available. As priority sub-basins are identified, the monitoring program may change to focus on specific areas.

Who is eligible to participate?

- ▶ Priority sub-basins in Napa are currently being identified. If your well is within the priority sub-basins and a well completion report is available for your well, you may be eligible to participate. For more information about the volunteer program, visit: www.countyofnapa.org/bos/grac.

What is required to participate?

- ▶ Participating well owners must sign an agreement allowing the release of depth to groundwater data and a permit to enter the property, allowing Napa County Department of Public Works or its contractor to access the well and measure the groundwater elevations twice per year (in the spring and fall).

How will the collected information be used?

- ▶ To monitor and track groundwater level elevations; understand the relationship between surface water and groundwater; maintain a central data management system of monitoring; and improve the accuracy and reliability of relevant water resource models.

Will my privacy be protected?

- ▶ Napa County will not publish your personal information as part of the monitoring program. Data collected will be used to create maps indicating groundwater levels and trends. These maps will be publically available, but specific well locations will not be shown. If a volunteer decides to participate in the CASGEM program, then well location and well construction details will be public.

What if a well owner participating in the voluntary groundwater level monitoring program withdraws from the program?

- ▶ Gathering depth to groundwater data for a long period of time is critical to understanding groundwater level trends. Volunteers are encouraged to participate in the program for the duration but may choose to leave the program at any time.

What are the benefits of participating in the voluntary groundwater level monitoring program?

- ▶ Volunteers will: receive accurate groundwater level readings twice per year (late spring and late fall); be able to see seasonal and long-term groundwater level trends of their well; receive water quality data if testing is agreed to and if it is conducted; gain improved understanding of our groundwater resources community-wide; and there is no cost to the well owner to participate in the program.

How Can I find additional information about the program?

- ▶ Please visit www.countyofnapa.org/bos/grac.