

Napa River Sediment TMDL Implementation Tracking and Accounting System (ITAS) Project Overview



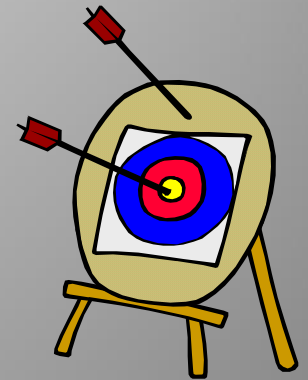
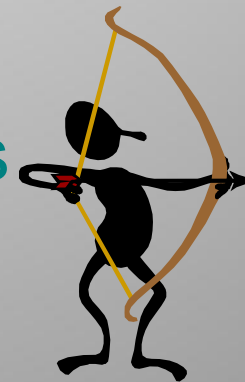
A Tradition of Stewardship
A Commitment to Service

Watershed Information Center
& Conservancy (WICC) Board
of Napa County
March 28, 2013

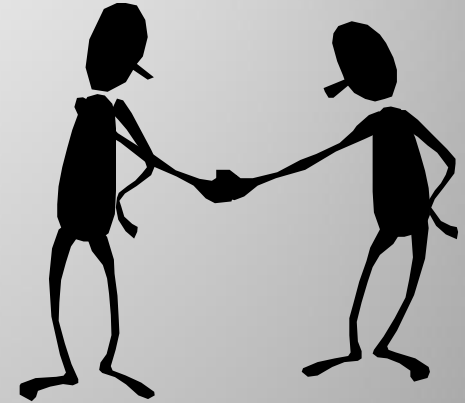
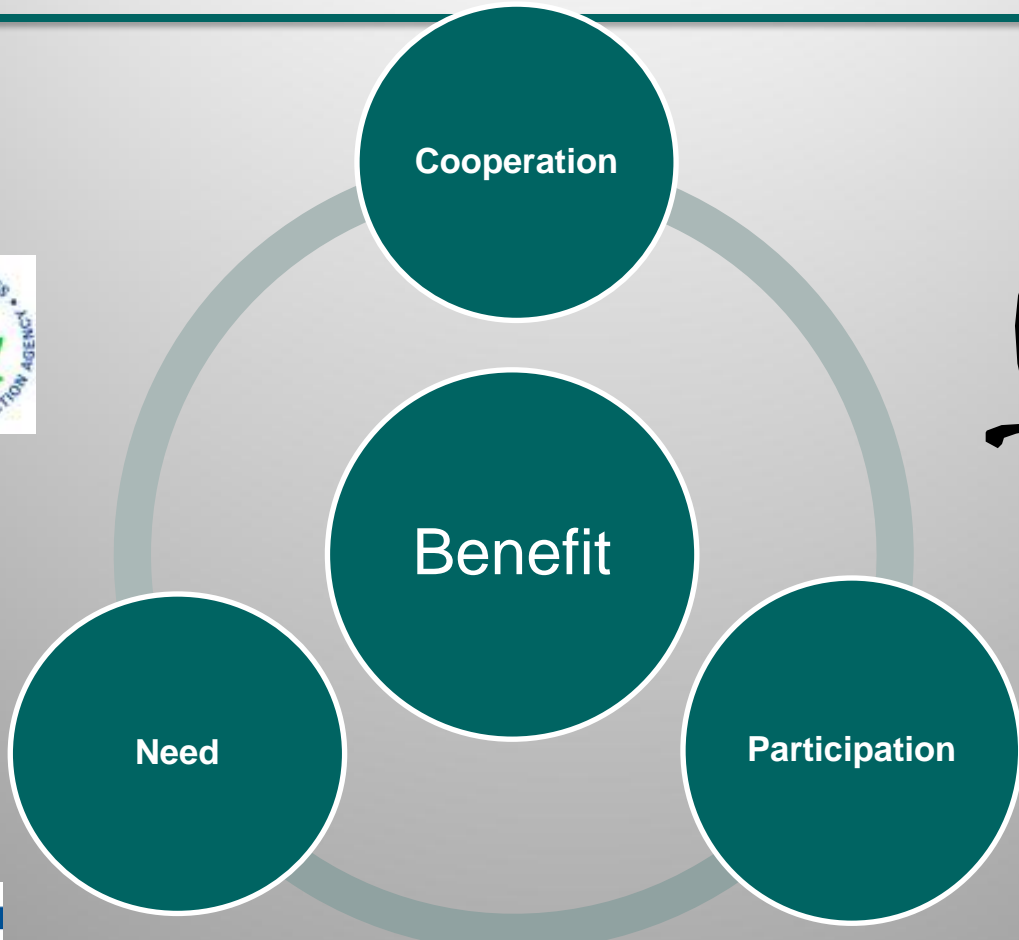
Presentation Goals



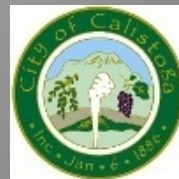
- Create awareness of the Napa ITAS effort
- Provide project overview and status update
- Encourage participation
- Outline timeline & next steps



Need, Cooperation, Participation & Benefit



A Tradition of Stewardship
A Commitment to Service



Napa River Sediment TMDL



- Background: *Napa River Sediment Reduction and Habitat Enhancement Plan (2009)*
- Problem: beneficial uses (primarily fish) adversely affected by excess sediment (1990 listing)
- Sources: vineyards, grazing, rural roads/lands, parks & public works
- Targets: spawning gravel permeability, streambed scour
- Allocation: natural processes, human actions [channel incision, roads, surface erosion, gullies, urban storm/wastewater]
- Implementation Plan: listing of actions and performance standards

Napa ITAS Project Overview



Demonstrating progress towards achieving the goals and objectives of the *Napa River Sediment Reduction and Habitat Enhancement Plan*

- Identification of meaningful metrics
- Prioritization and selection of metrics
- Development of the ITAS web based system
- Create effective means of accounting and reporting
- Stakeholder engagement and participation



Napa ITAS System



A centralized, web based, GIS tool for the tracking and accounting of the progress being made to meet objectives in the *Napa River Sediment Reduction and Habitat Enhancement Plan*

- Data Management Module
- Management Progress Reporting
- Public Module
- Integration with WICC web presence

Napa ITAS - Management



- Data Management Module
 - ✓ Data view for snap shot of progress
 - ✓ Tracking at the metric, BMP, project, and milestone level
 - ✓ Data entry module to accommodate batch and manual data loading
 - ✓ Qualitative and quantitative data

- Management Progress Reporting

- ✓ Fully integrated and automated
- ✓ Real time reporting

Chesapeake Bay TMDL Tracking and Accounting System Version 1.5

Home | Data Viewer | Data Admin | Password | Log Out

Toggle Map

Streets Aerial Topo

State: Segment: Search Reset Date: 2009-2011 Show: Delivered Model Version: 5.32

TMDLs 92 Segments TMDL Sector WLAs/LAs Individual WLAs BMP Implementation

Displaying 1 - 100 of 5873 results

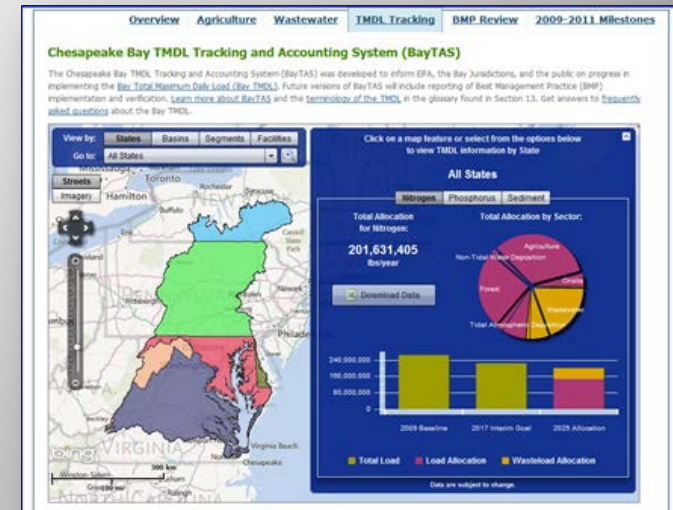
State	Segment	Sector	Facility	BPOES	TMDL 2025			2005			2010			2015		
					TN	TP	TSS	TN	TP	TSS	TN	TP	TSS	TN	TP	TSS
DC	ANATF_DC	Agriculture			NA*	NA*	NA*	0	0	0	0	0	0	0	0	0
DC	ANATF_DC	Forest			3,582	215	67,703	1,583	46	28,915	1,805	46	30,333			
DC	ANATF_DC	Non-Tidal Water Deposition			3,015	164	0	3,002	163	0	3,002	163	0			
DC	ANATF_DC	Onsite			NA*	NA*	NA*	0	0	0	0	0	0			
DC	ANATF_DC	Urban			11,045	1,905	443,782	15,737	1,508	612,357	15,639	1,494	603,436			
DC	ANATF_DC	Wastewater-CDD	Individual	See Details	2,739	577	62,430	NA**	NA**	NA**						

Napa ITAS System - Public



➤ Public Module

- ✓ Fully integrated display of real-time data
- ✓ Spatial display of data
- ✓ Visual tracking progress across key metrics
- ✓ Transparent access to progress accounting
- ✓ Centralized communication and outreach mechanism



➤ Integration with Watershed Information Center & Conservancy (WICC) website

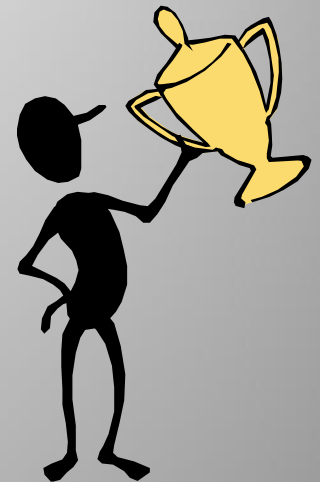
- ✓ Consistent and locally familiar platform
- ✓ Integration with WICC project database



Napa ITAS - Benefits



- Demonstration of Effort & Progress
- Improved Tracking & Reporting
- Coordinated Monitoring
- More Informed Decisions
- Shared Communication & Outreach
- Increased Transparency & Awareness



Napa ITAS - Stakeholders



Cooperation and Participation – Key to Success

➤ Technical – Advisory – Expert – Practitioner

- ✓ Review of Metrics
- ✓ Provide Data
- ✓ Test Web Tool
- ✓ Implement Actions
- ✓ Contribute to the ITAS
- ✓ Report on Efforts
- ✓ Monitor and Report Results



Status – Metric Selection

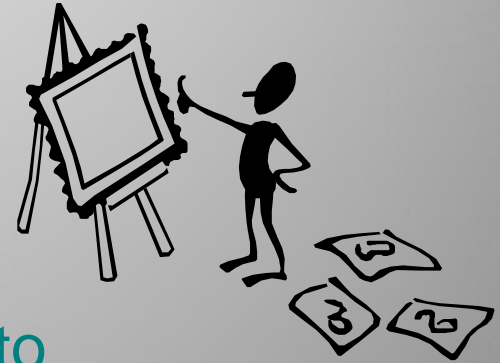


- Identification of candidate metrics
 - ✓ Tracking vs. Accounting

- Prioritization and selection of metrics:
 - ✓ link to progress toward Napa TMDL targets
 - ✓ information/data availability
 - ✓ adequate spatial and temporal scale
 - ✓ Advantages/challenges of each

- Facilitate discussions with key stakeholders to identify data and finalize metric selection

- Identification of the tracking boundaries and scale



Status – Candidate Metrics



Candidate Metric List

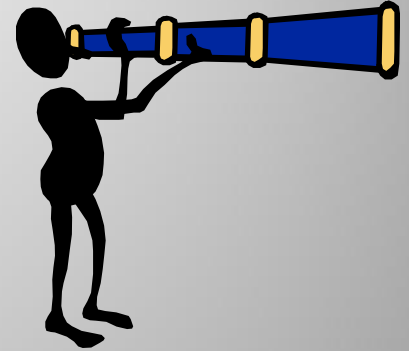
- Activity/BMP Tracking
- Road Condition Assessment
- Bank Erosion
- Stream Habitat Assessment
- Fisheries Monitoring



Status – Next Steps



- Data Collection
- Determining Reporting Unit
- Overall Timeline
 - Identify Metrics/Collect Data:
 - Follow-up TAC Mtg #2:
 - Beta Website/Mapping Developed:
 - End of Project/Grant:



Now – Fall/Winter 2013
Fall 2013
Winter 2013
June 2014

Contact:

Jeff Sharp

jeff.sharp@countyofnapa.org

707-259-5936



A Tradition of Stewardship
A Commitment to Service

Discussion



Metrics

Data Needs

Challenges

Coordination

Communication & Outreach

Benefits

