



**NOAA
FISHERIES**

West Coast Region

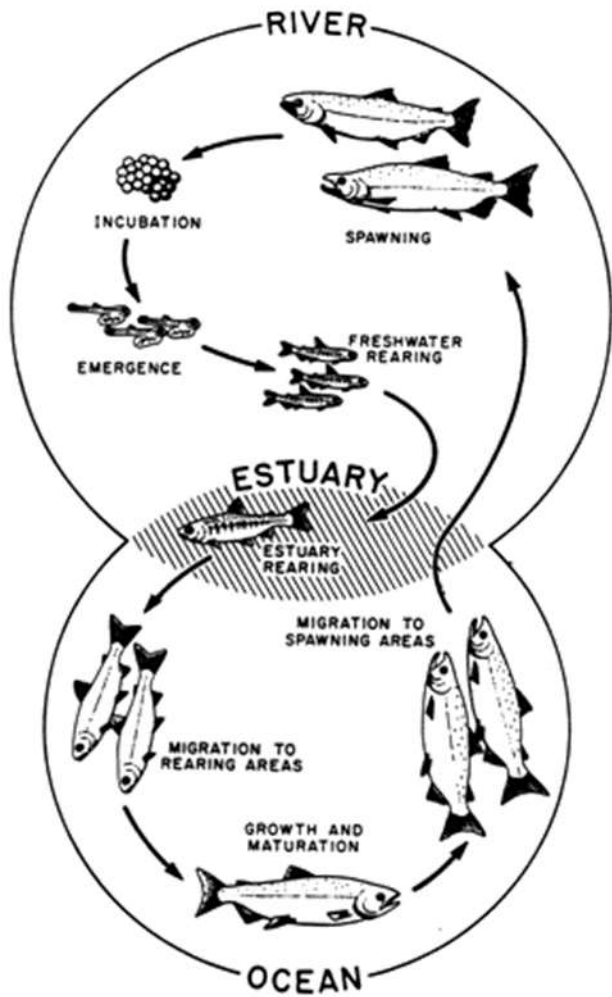
**Daniel Logan
Fishery Biologist
Santa Rosa**

Superheroes come in all sizes.





© John McMillan



Central California Coast Steelhead
Distinct Population Segment
Diversity Strata
Essential and Supporting Populations



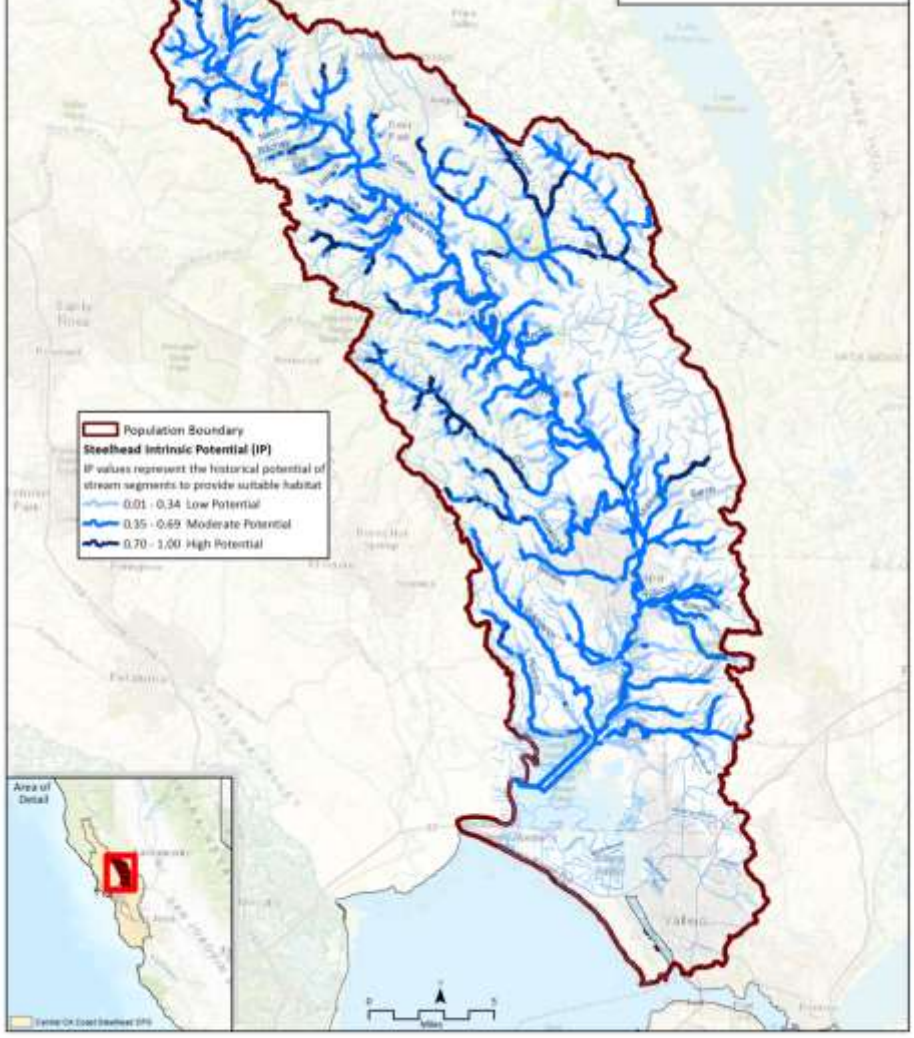
Stratum Name	Recovery Target
North Coastal	8,900
Interior	17,200
Coastal San Francisco Bay	5,900
Interior San Francisco Bay	17,900
Santa Cruz Mountains	12,200
Recovery Target	62,100

Central California Coast Steelhead DPS
Interior San Francisco Bay Diversity Stratum
Essential and Supporting Populations

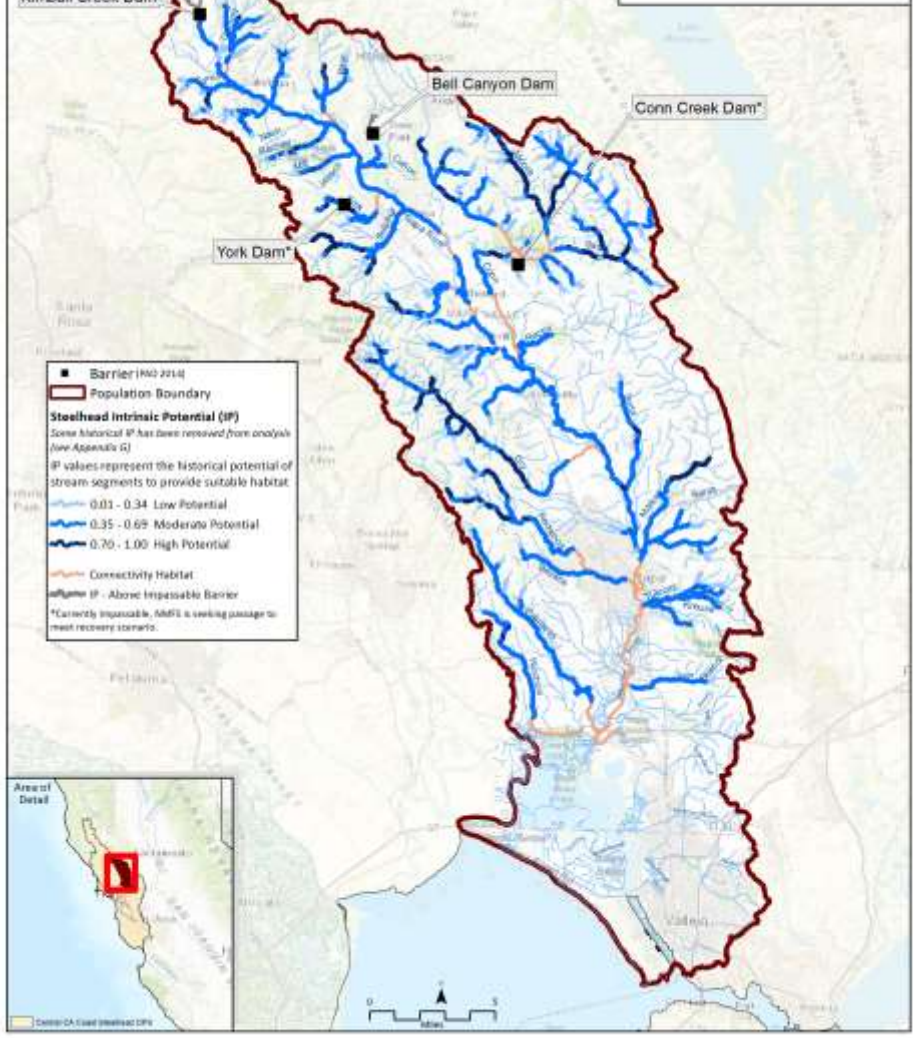


Interior San Francisco Bay Diversity Stratum	
Stream Name	Spawner Abundance Target
Alameda Creek	2,900
Cordornices Creek	N/A
Coyote Creek	3,000
Green Valley/Suisun Creek	2,100
Napa River	4,700
Petaluma River	2,100
Pinole Creek	N/A
San Leandro Creek	31-64
San Lorenzo Creek	110-221
San Pablo Creek	49-100
Sonoma Creek	3,100
Wildcat Creek	N/A
Recovery Target	17,900

**Napa River
CCC Steelhead Population
Modeled Historical IP**



**Napa River
CCC Steelhead Population
Recovery Scenario**



Native fish species collected annually in the Napa River rotary screw trap from 2009 through 2016. [Napa RCD]

Common Name	Scientific Name	2009	2010	2011	2012	2013	2014	2015	2016	Total
Steelhead / Rainbow trout	<i>Oncorhynchus mykiss</i>									
Fry / Parr (<130 mm)		941	94	7	152	3,025	303	35	11	4,568
Smolt (>130mm)		119	251	175	160	77	31	34	64	911
Adult or Resident (>300 mm)		0	3	4	0	3	0	0	3	13
Chinook Salmon	<i>Oncorhynchus tshawytscha</i>									
Parr / Smolt		1	1,520	7,377	488	19	0	0	580	9,985

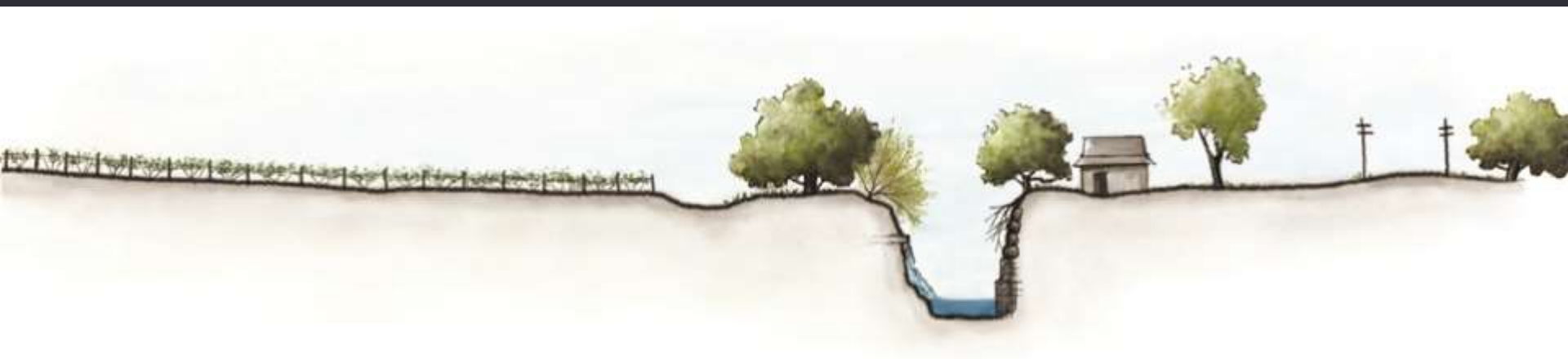


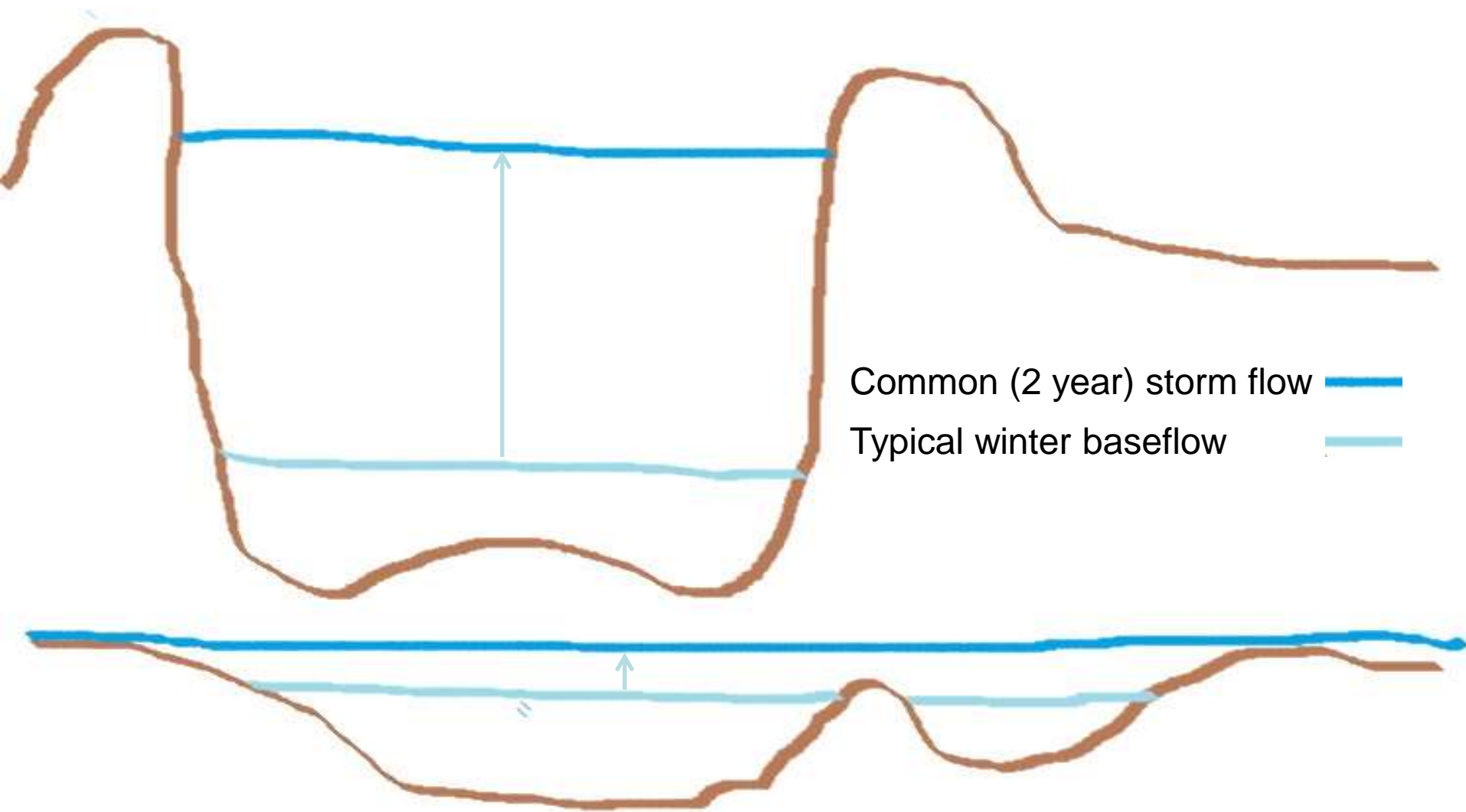


Early 1800s



Channel modification





Channels with accessible floodplains have limited increases in stage height and stream velocity with increasing/higher flows.



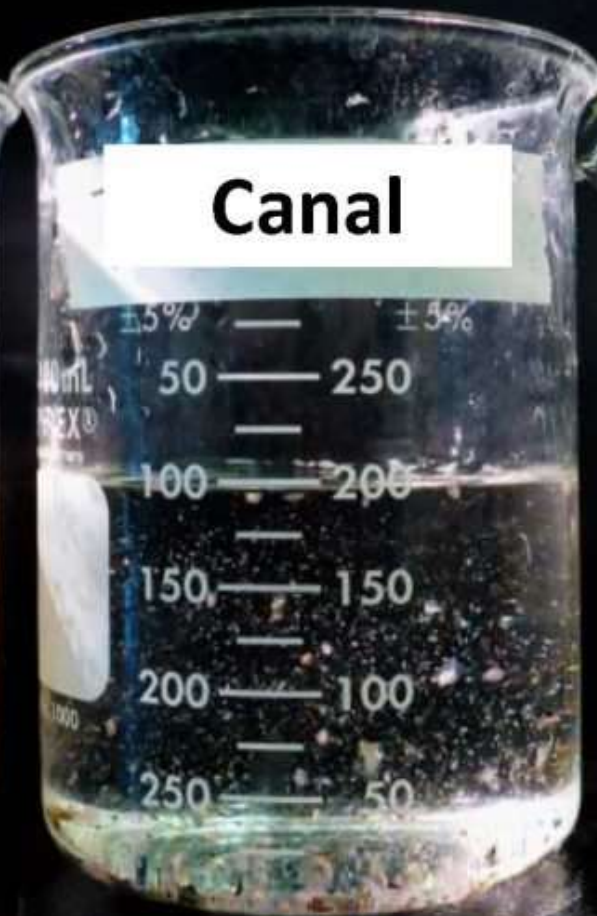


The Food is on the Floodplain



Total: 251,143/m³

149x



Total: 10,057/m³

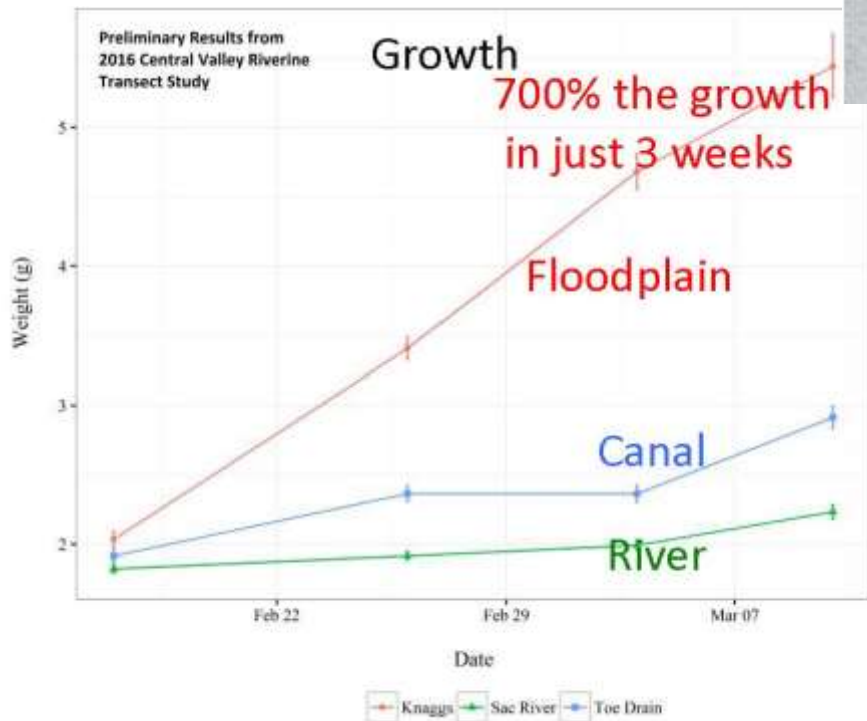
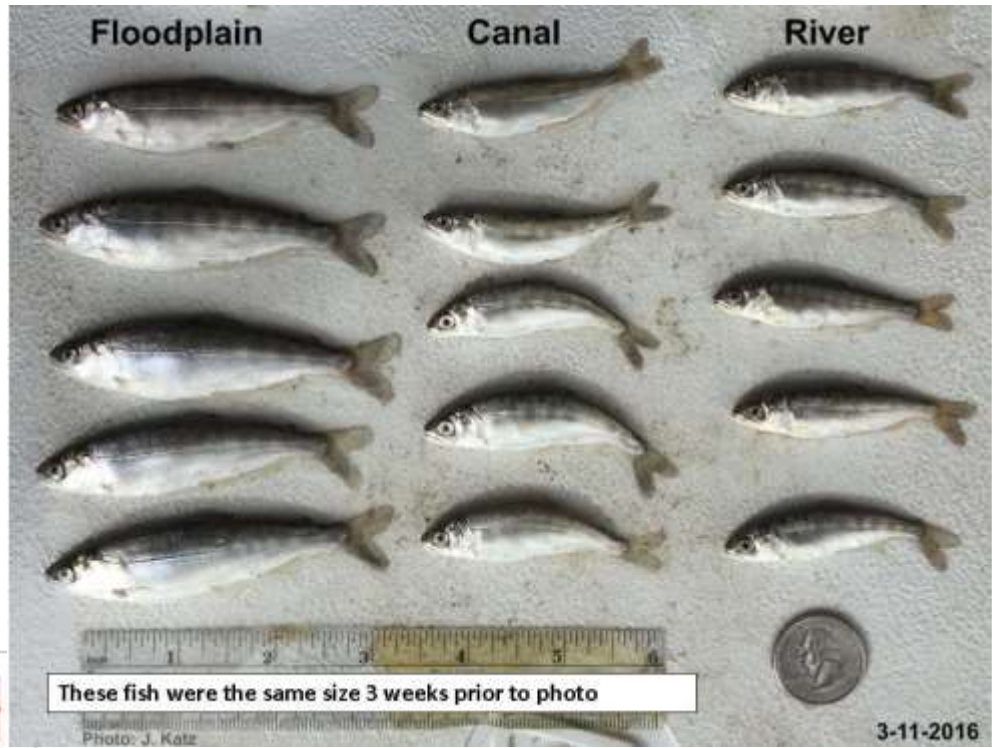
6x



Total: 1,687/m³

x

Bug Density Across Habitats



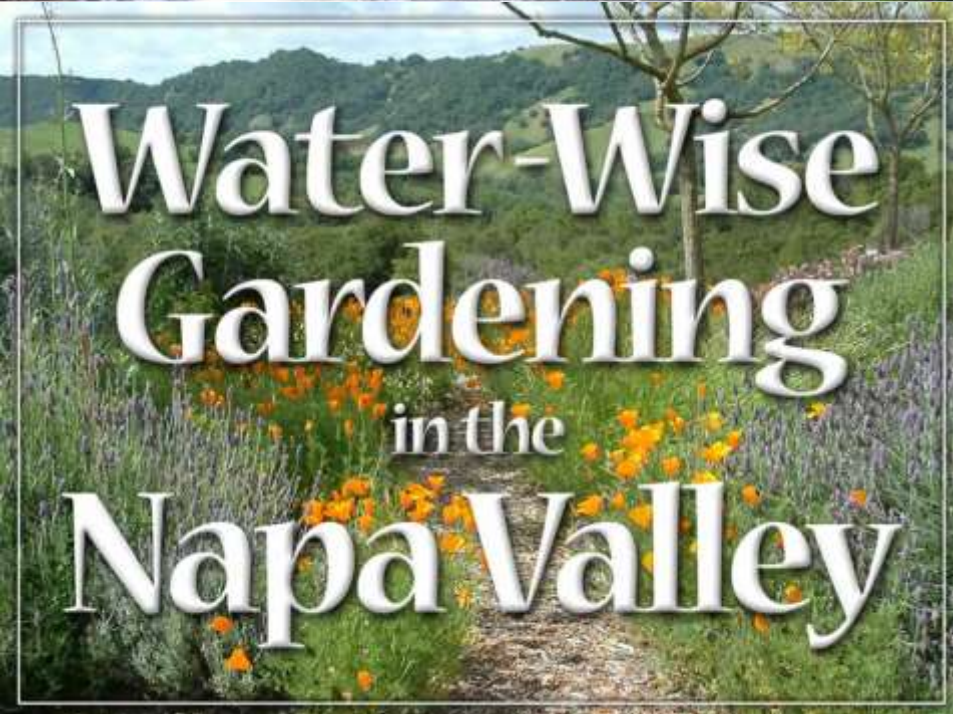
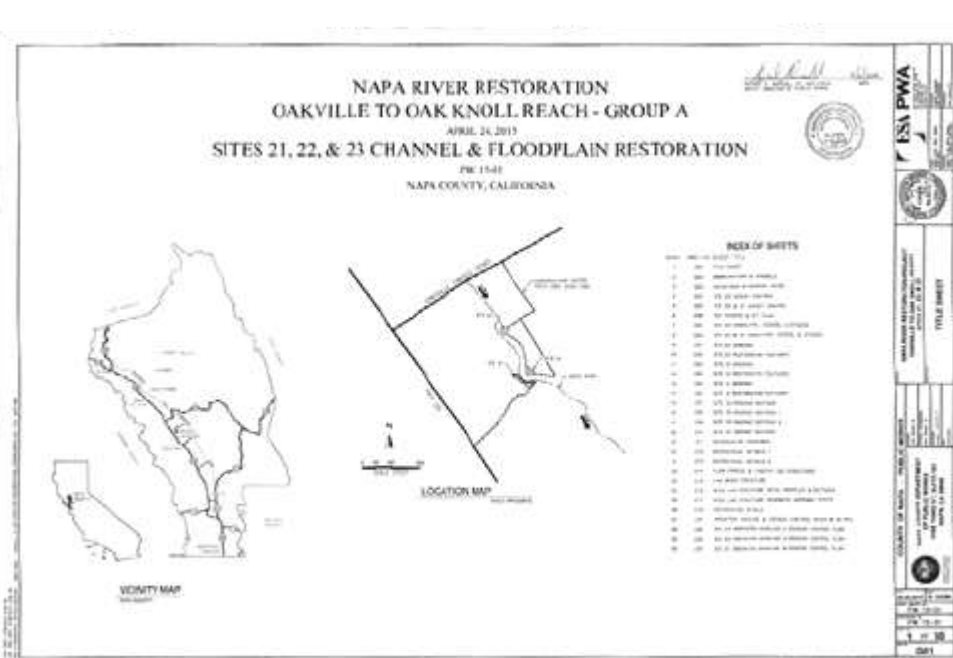
River Station 36+00, Reach 8 South, Bella Oaks Tributary Alcove: Upstream to Downstream













**Keep up the
good work!!**