



AGENDA

REGULAR BOARD MEETING

Thursday, September 24, 2015, 4:00 p.m.

NCTPA/NVTA Conference Room
625 Burnell Street, Napa CA 94559

Board of Directors

Susan Boswell
Tosha Comendant
Diane Dillon
Marita Dorenbecher
Gary Kraus
Jason Lauritsen
Kenneth Leary
Gretchen Stranzl
McCann
Marc Pandone
Alfredo Pedroza
Matt Pope
Jeff Reichel
Scott Sedgley
Pamela Smithers
Rita Steiner
Peter White

Alternate

Keith Caldwell

Staff

Patrick Lowe,
Secretary
Natural Resources
Conservation Mngr.,
Public Works

Jeff Sharp,
Principal Planner,
Public Works

Robert C. Martin,
Legal Counsel
Deputy Counsel,
County Counsel's
Office

804 First Street,
Napa, CA
94559-2623

Tel: 707-259-8600

info@napawatersheds.org

1. **CALL TO ORDER & ROLL CALL** (Chair)

2. **APPROVAL OF ACTION MINUTES**

Meeting of **July 23, 2015** (Chair) (2 min)

3. **PUBLIC COMMENT**

In this time period, anyone may comment to the Board regarding any subject over which the Board has jurisdiction, or request consideration to place an item on a future Agenda. No comments will be allowed involving any subject matter that is scheduled for discussion as part of this Agenda. Individuals will be limited to a three-minute presentation. No action will be taken by the Board as a result of any item presented at this time. (Chair)

4. **UPDATES, REPORTS AND DISCUSSION**

- a) Report on public announcement to fill **vacancy on the WICC** (Staff) (2 min)
- b) Report on Napa **County water supplies, drought conditions and El Niño** (Phil Miller, Deputy Director, Public Works) (10 min)
- c) Update on Napa County **Groundwater Monitoring Program** (Patrick Lowe, NRC Mgr.) (10 min)
- d) Report on **WICC supported watershed education activities and events** (Erick McKee, Napa County Resource Conservation District) (10 min)
- e) Report on **2016 Watershed Education Calendar** wildlife theme and request for images from the community (Staff) (2 min)
- f) Report on **2015-16 WICC WebCenter** scope of work to support annual work plan and strategic plan goals (Staff) (5 min)
- g) Other reports and updates (Board/Staff) (5-10 min)

(cont.)

5. **PRESENTATIONS AND DISCUSSION**

- a) Presentation on the **Climate Ready North Bay Scenarios for the Napa Valley**, an effort launched by the CA Coastal Conservancy to help communities get “climate ready.” Developed projections include watershed hydrology factors such as runoff, recharge and soil moisture. Some site-specific work will be presented to foster dialog on exploring how to use climate scenarios to generate local information and products for planners, resource managers, and decision-makers to meet real-world climate adaptation challenges (Lisa Micheli, PhD, Executive Director, Pepperwood’s Dwight Center for Conservation) (20 min)
- b) Presentation and perspective on **Dry-Farming Practices for Vineyards** (John Williams, Owner and Winemaker, Frogs Leap Winery) (20 min)

6. **PRESENTATIONS, DISCUSSION AND POSSIBLE DIRECTION**

Presentation by the **Napa Valley Community Foundation (NVCF)** and discussion and possible direction regarding establishing a special Fund to accept tax-deductible donations from private individuals, corporations or other foundations in support of the WICC’s mission and strategic plan goals (Terence Mulligan, President, NVCF) (20 min)

7. **INFORMATIONAL ANNOUNCEMENTS**

Exchange of **informational announcements and events** (Staff/Board/Public) (5-10 min)

8. **FUTURE AGENDA ITEMS**

Discussion of possible **items for future agendas** (Board/Staff) (5 min)

- a) Presentation on the **Napa River Sediment TMDL Implementation, Tracking and Accounting System (ITAS)**
- b) Other items

9. **NEXT MEETING (Chair)**

Regularly Scheduled Board Meeting: **November 19, 2015 – 4:00 p.m.**

- *NOTE: Meeting is one week earlier due to Thanksgiving holiday*

10. **ADJOURNMENT (Chair)**

Note: If requested, the agenda and documents in the agenda packet shall be made available in appropriate alternative formats to persons with a disability. Please contact Jeff Sharp at 707-259-5936, 804 First St., Napa CA 94559-2623.





-- ACTION MINUTES --

REGULAR BOARD MEETING

Thursday, July 23, 2015, 4:00 p.m.

NCTPA/NVTA Conference Room
625 Burnell Street, Napa CA 94559

Board of Directors

Susan Boswell
Tosha Comendant
Diane Dillon
Marita Dorenbecher
Michael Haley
Gary Kraus
Jason Lauritsen
Kenneth Leary
Gretchen Stranzl
McCann
Marc Pandone
Alfredo Pedroza
Matt Pope
Jeff Reichel
Scott Sedgley
Pamela Smithers
Rita Steiner
Peter White

Alternate

Keith Caldwell

Staff

Patrick Lowe,
Secretary
Natural Resources
Conservation Mngr.,
Public Works

Jeff Sharp,
Principal Planner,
Public Works

Robert C. Martin,
Legal Counsel
Deputy Counsel,
County Counsel's
Office

804 First Street,
Napa, CA
94559-2623

Tel: 707-259-8600

info@napawatersheds.org

1. CALL TO ORDER & ROLL CALL (Chair)

Members Present: Susan Boswell, Diane Dillon, Marita Dorenbecher, Gary Kraus, Kenneth Leary, Gretchen Stranzl McCann, Marc Pandone, Jeff Reichel, Scott Sedgley, Rita Steiner, Peter White

Members excused: Tosha Comendant, Jason Lauritsen, Matt Pope, Pamela Smithers, Keith Caldwell

Members absent: Alfredo Pedroza

Staff present: Patrick Lowe, Jeff Sharp

2. APPROVAL OF ACTION MINUTES

Meeting of **May 28, 2015** (Chair) (2 min)

Approved as presented

3. PUBLIC COMMENT

In this time period, anyone may comment to the Board regarding any subject over which the Board has jurisdiction, or request consideration to place an item on a future Agenda. No comments will be allowed involving any subject matter that is scheduled for discussion as part of this Agenda. Individuals will be limited to a three-minute presentation. No action will be taken by the Board as a result of any item presented at this time. (Chair)

None provided

4. UPDATES, REPORTS AND DISCUSSION

- a) Report on Board of Supervisors' June 23, 2015 approval of **new name for the WICC and alternates** for City/Town representatives (Staff) (2 min)

Jeff Sharp reported that the Board of Supervisors approved the new name for the WICC and alternates for City/Town representatives.

- b) Update on **Ethics Training** and Committees, Commissions and Advisory Boards Training Workshop on August 7, 2015, 8:00am-12:00pm (Staff) (2 min)

Jeff Sharp provided the update and noted that ethics training is required for all advisory committee members, which includes WICC members.

(cont.)

- c) Report on approved **WICC budget allocation for fiscal year 2015-16** (Staff) (5 min)
Jeff Sharp reported on the Board of Supervisors' approval of the County's 2015-16 budget. Mr. Sharp distributed a report showing the allocation of approved WICC funds for services and expenses for the fiscal year. Included in the report was a status update on the recommended actions in the WICC's 2015-16 Work Plan.
- d) Update on County **Groundwater Monitoring Program** and passage of **Senate Bill 83** allowing public access to well completion reports (Staff) (5 min)
Patrick Lowe provided an update on a new contract, approved by the Board of Supervisors, with Luhdorff and Scalmanini Consulting Engineers, groundwater consultants, to prepare a Basin Analysis Plan by 2017 to meet new State regulations. Mr. Lowe also noted that a new river flow monitoring station will be installed in the lower watershed as part of the work effort to account for in-flows and out-flows of the Napa River watershed. Mr. Lowe also said that 10 well locations in the valley will be monitored more frequently to better understand how those areas are doing with respect to changing groundwater levels and the drought.
- Phil Miller updated the Council on the passage of SB 83. The bill allows for certain well log information, which was proprietary, to be made available to the public. There was concern by some in the groundwater monitoring program that well information be held private, in confidence, to the greatest extent possible by the County. Passage of the bill allows for more public access to well construction information. An outreach effort to those in the monitoring program will be conducted, letting them know of the new State law.*
- e) Report on WICC presentation to the **Environmental Education Coalition of Napa County** (EECNC) on July 14, 2015 (Staff) (2 min)
Jeff Sharp reported on a presentation that he provided to the EECNC group and discussions with EECNC on how the WICC could better serve youth and youth education in the County.
- f) Update on **Berryessa Snow Mountain National Monument** designation (Staff) (2 min)
Jeff Sharp pointed to information in the Council's agenda packet. The designation should help to improve resource planning, coordination and funding in the region.
- g) Other reports and updates (Board/Staff) (5-10 min)
Marc Pandone provided information on an upcoming (Aug. 13th at 6:30pm) environmental poetry session at the main library in Napa sponsored by the Sierra Club.
- Jeff Reichel noted that it would be helpful, in support of local water conservation efforts, for the City of Napa to issue monthly water billing rather than every other month.*

5. PRESENTATIONS AND DISCUSSION

- a) Presentation and discussion of **Napa County Regional Park and Open Space District** projects and activities (John Woodbury, General Manager, NCRPOS) (15 min)
John Woodbury provided the Council with updates on a number of District projects – Suscol headwaters/Kirkland Ranch Bay Area Ridge Trail connection Phase 1, Berryessa Snow Mountain National Monument Area Cedar Roughs access, Oat Hill Mine Trail private inholdings, Robert Lewis Stevens State Park Management, Bothe State Park Management, Napa River Bay Trail section south Napa Pipe, Moore Creek Park opening of southern unit trail, Camp Berryessa redevelopment.

Diane Dillon asked about controlling access to Skyline Park via River to Ridge Trail when the park is closed. Mr. Woodbury recommends that a new electronic pay station be installed to help collect fees and conduct back-country spot checks of visitors. Skyline Park is unique in that it was established and is run

by non-profit citizen group. The Park's State lease runs out in 2030. Planning and a new approach to the Park's management should be discussed.

- b) Presentation on **2015 Napa Youth Ecology Corps** program and stewardship projects (Shaun Horne, Resource Specialist, Napa County Flood District) (15 min)
Shaun Horne introduced members of the 2015 Corps present, showed a short video and provided the Council with an overview of the program and update on recent NYEC projects. Corps members participated in the presentation and provided their perspectives on the program and what it means to them and their future career aspirations.
- c) Presentation on **Napa County Firewise Program** and defensible space planning to mitigate wildland fire risks (Joe Fletcher, Fire Prevention Captain, CalFire) (15 min)
Joe Fletcher was unable to attend due to local fire emergency (Wragg Fire).
- d) Presentation and discussion of **groundwater information on WICC** website (Staff) (10 min)
Jeff Sharp presented an overview of the groundwater information available on the WICC website. Mr. Sharp used the website to show how the public could navigate and access groundwater maps, reports and summaries for various areas of the County (mostly within the Napa Valley). The long-term plan is to update the information on the site annually using reports and data from the County's Groundwater Monitoring Program.

Marita Dorenbecher noted that this information would be good to show to City/Town councils.

6. **REPORT, DISCUSSION AND POSSIBLE ACTION:**

Report and discussion on **WICC presentation for use by Board Members** to increase WICC awareness, and possible **appointment of an outreach ad-hoc subcommittee** to identify and take part in presentation opportunities (Staff) (15 min)

Jeff Sharp reported on the development of a WICC overview presentation for use as an outreach tool. The presentation is available to WICC members and staff for their use. The Council provided the following feedback: the presentation needs to be shorter (10 mins or less), provide a 2 min overview then highlight one or two key areas/projects that the WICC supports (groundwater, rotary screw trap, website maps/data), an interactive presentation (using the website) is more interesting than static slides, more photos, less text. As presentation dates are confirmed, share those with the Council so that others on the Council may attend (depending on schedules/timing). It was suggested, that Instead of a "PowerPoint" presentation, that the speaker directly use the WICC website, demonstrating the site and what it has to offer as communication tool will draw more attention to it and more use.

Scott Sedgley noted that protection of lands in the City of Napa's watersheds is becoming a priority and will be discussed at a meeting on the 4th or 18th of August. The WICC site could be utilized in those discussions.

Diane Dillon mentioned the County Supervisors would be interested helping with presentations conducted in their respective districts.

7. **INFORMATIONAL ANNOUNCEMENTS**

Exchange of **informational announcements and events** (Staff/Board/Public) (5-10 min)

- a) **Oxbow Bypass Dedication Ceremony**, August 4th 11:00AM, Oxbow Bypass/McKinstry St., Napa
A flier with details of the celebration was provided to the Council
- b) **Wildlife Speaker Series:** River Otters – August 12th, Beavers – September 9th, 7:00PM, Napa Book Mine
- c) Other announcements (Board/Staff) (5-10 min)
None provided

8. FUTURE AGENDA ITEMS

Discussion of possible **items for future agendas** (Board/Staff) (5 min)

Napa Valley Community Foundation, Climate Ready Grant findings, Perspectives on dry-farming vineyards, Stormwater Education, and other items

Scott Sedgley announced that the CA Water Commission will hold a public meeting on July 27th from 6:00p-8:00p at the Napa Elks Lodge to take comments on Water Quality Supply Infrastructure Improvement Act.

Susan Boswell announced the California Climate Change Symposium taking place on Aug 24th and 25th at the Sacramento Convention Center.

9. NEXT MEETING (Chair)

Regularly Scheduled Board Meeting: **September 24, 2015 – 4:00 p.m.**

10. ADJOURNMENT (Chair)

Motion and approval to adjourn.

Note: If requested, the agenda and documents in the agenda packet shall be made available in appropriate alternative formats to persons with a disability. Please contact Jeff Sharp at 707-259-5936, 804 First St., Napa CA 94559-2623.



Voting Key

If not unanimous, votes will be tallied (N = No; A = Abstained, X = Excused) using the following Board Member abbreviations: SB = Susan Boswell; Tosha Comendant = TC, DD = Diane Dillon; MD = Marita Dorenbecher, GK = Gary Kraus; JL = Jason Lauritsen; KL = Kenneth Leary; GSMC = Gretchen Stranzl McCann; MPI = Marc Pandone; AP = Alfredo Pedroza; MP2 = Matt Pope; JR = Jeff Reichel; SS = Scott Sedgley; PS = Pamela Smithers; RS = Rita Steiner; PW = Peter White; KC = Keith Caldwell (alternate)

Example Key:

SB	TC	DD	MD	GK	JL	KL	GSMC	MPI	AP	MP2	JR	SS	PS	RS	PW	KC
X			A			N				A						



A Tradition of Stewardship
A Commitment to Service

County Executive Office

1195 Third Street, Suite 310
Napa, CA 94559
www.countyofnapa.org

Main: (707) 253-4421
Fax: (707) 253-4176

Nancy Watt
County Executive Officer

Contact:

Nadine Willoughby, Administrative Support Technician
Committees & Commissions
(707) 253-4421
nadine.willoughby@countyofnapa.org

FOR IMMEDIATE RELEASE
August 31, 2015

**Applicants sought for Watershed Information and
Conservation Council (WICC) of Napa County**

(Napa, CA--) The County Executive Officer announces the existence of **one (1) Public At Large** opening on the Board of Directors of the **Watershed Information and Conservation Council (WICC) of Napa County** due to an unexpected resignation. The term of office commences immediately upon appointment and expires August 2017. The WICC meets the fourth Thursday every other month at 4:00 p.m. 625 Burnell Street, Napa.

Anyone interested in consideration for appointment must submit a completed application form or apply directly to the County Executive Office, 1195 Third Street, Suite 310, Napa, 94559, telephone 253-4421 no later than **5:00 p.m. on Oct. 5, 2015**. The application form is available on the County website at www.countyofnapa.org. Click on the Committees and Commissions link on the main web page. To submit an application online, click "application for appointment" and follow the application instructions.

The Council consists of seventeen members and one alternate member as follows: one (1) member nominated by the Napa County Land Trust from among the Land Trust's Board of Directors; one (1) director or associate director nominated by the Napa County Resource Conservation District; one (1) representative from the Natural Resource Conservation Service; two (2) members and one (1) alternate of the Napa County Board of Supervisors; one (1) member of the Napa County Conservation, Development and Planning Commission; one (1) council representative from each city or town in Napa County nominated by their respective city or town council; and six (6) Napa County residents from the public at large representing environmental, agricultural, development and community interests.

The WICC serves as an advisory committee to Napa County Board of Supervisors. The WICC's role is to assist the Board of Supervisors in their decision-making process and serve as a conduit for citizen input by gathering, analyzing and recommending options related to the management of watershed resources. More about the WICC can be found on their website at www.napawatersheds.org.

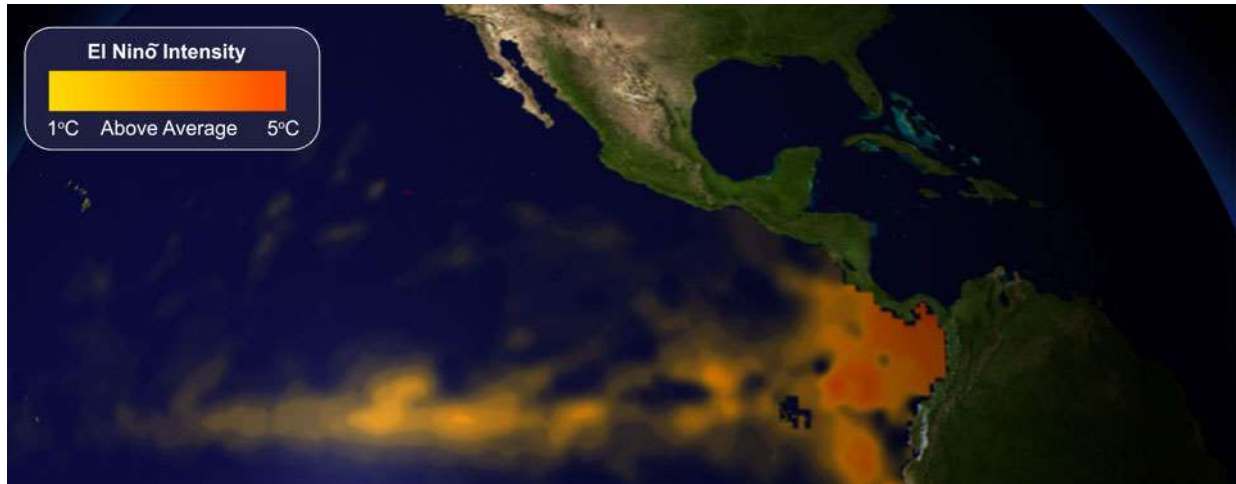
The Board of Supervisors and staff of Napa County are dedicated to preserving and sustaining Napa County for present and future generations as a community with generous open space, a thriving agricultural industry and a quality human and natural environment. Visit us on the Web at www.countyofnapa.org.

###

What are El Niño and La Niña?

El Niño and La Niña are **complex weather patterns** resulting from **variations in ocean temperatures** in the Equatorial Pacific.

Source: NOAA National Ocean Service - <http://oceanservice.noaa.gov/facts/ninonina.html>



El Niño, warmer than average waters in the Eastern equatorial Pacific (shown in orange on the map), affects weather around the world.

El Niño and La Niña are opposite phases of what is known as the *El Niño-Southern Oscillation (ENSO)* cycle. The ENSO cycle is a scientific term that describes the fluctuations in temperature between the ocean and atmosphere in the east-central Equatorial Pacific (approximately between the International Date Line and 120 degrees West).

La Niña is sometimes referred to as the *cold phase* of ENSO and El Niño as the *warm phase* of ENSO. These deviations from normal surface temperatures can have large-scale impacts not only on ocean processes, but also on global [weather and climate](#).

El Niño and La Niña episodes typically last nine to 12 months, but some prolonged events may last for years. While their frequency can be quite irregular, El Niño and La Niña events occur on average every two to seven years. Typically, El Niño occurs more frequently than La Niña.

El Niño

El Niño means *The Little Boy*, or *Christ Child* in Spanish. El Niño was originally recognized by fishermen off the coast of South America in the 1600s, with the appearance of unusually warm water in the Pacific

Ocean. The name was chosen based on the time of year (around December) during which these warm waters events tended to occur.

The term El Niño refers to the large-scale ocean-atmosphere climate interaction linked to a periodic warming in sea surface temperatures across the central and east-central Equatorial Pacific.

Typical El Niño effects are likely to develop over North America during the upcoming winter season. Those include warmer-than-average temperatures over western and central Canada, and over the western and northern United States. Wetter-than-average conditions are likely over portions of the U.S. Gulf Coast and Florida, while drier-than-average conditions can be expected in the Ohio Valley and the Pacific Northwest. The presence of El Niño can significantly influence weather patterns, ocean conditions, and marine fisheries across large portions of the globe for an extended period of time.

La Niña

La Niña means *The Little Girl* in Spanish. La Niña is also sometimes called *El Viejo*, *anti-El Niño*, or simply "*a cold event*."

La Niña episodes represent periods of below-average sea surface temperatures across the east-central Equatorial Pacific. Global climate La Niña impacts tend to be opposite those of El Niño impacts. In the tropics, ocean temperature variations in La Niña also tend to be opposite those of El Niño.

During a La Niña year, winter temperatures are warmer than normal in the Southeast and cooler than normal in the Northwest.

Groundwater Level Conditions Update:

Napa Valley Floor, MST Subarea, and Carneros Subarea

September 8, 2015

1. Throughout March 2015, Napa County staff recorded groundwater levels in a total of 94 wells, including 5 county-owned monitoring wells at surface water/groundwater monitoring sites. These included:
 - 46 wells in the Napa Valley Floor Subareas
 - 24 wells in the MST Subarea
 - 12 wells in the Carneros Subarea
 - 12 wells in other groundwater subareas.
2. Overall, the spring 2015 data show that groundwater levels have remained stable or have increased relative to spring 2014 groundwater levels, as indicated by subarea below:

Napa Valley Floor Subareas

- In the St. Helena Subarea groundwater levels increased up to 8 ft. or remained stable between spring 2014 and spring 2015 in four wells with long-term records.
- In the Yountville Subarea groundwater levels increased between 5 ft. and 8 ft. between spring 2014 and spring 2015 in six wells with long-term records.
- In the Napa and Calistoga Subareas groundwater levels were stable between spring 2014 and spring 2015 in six wells with long-term records.

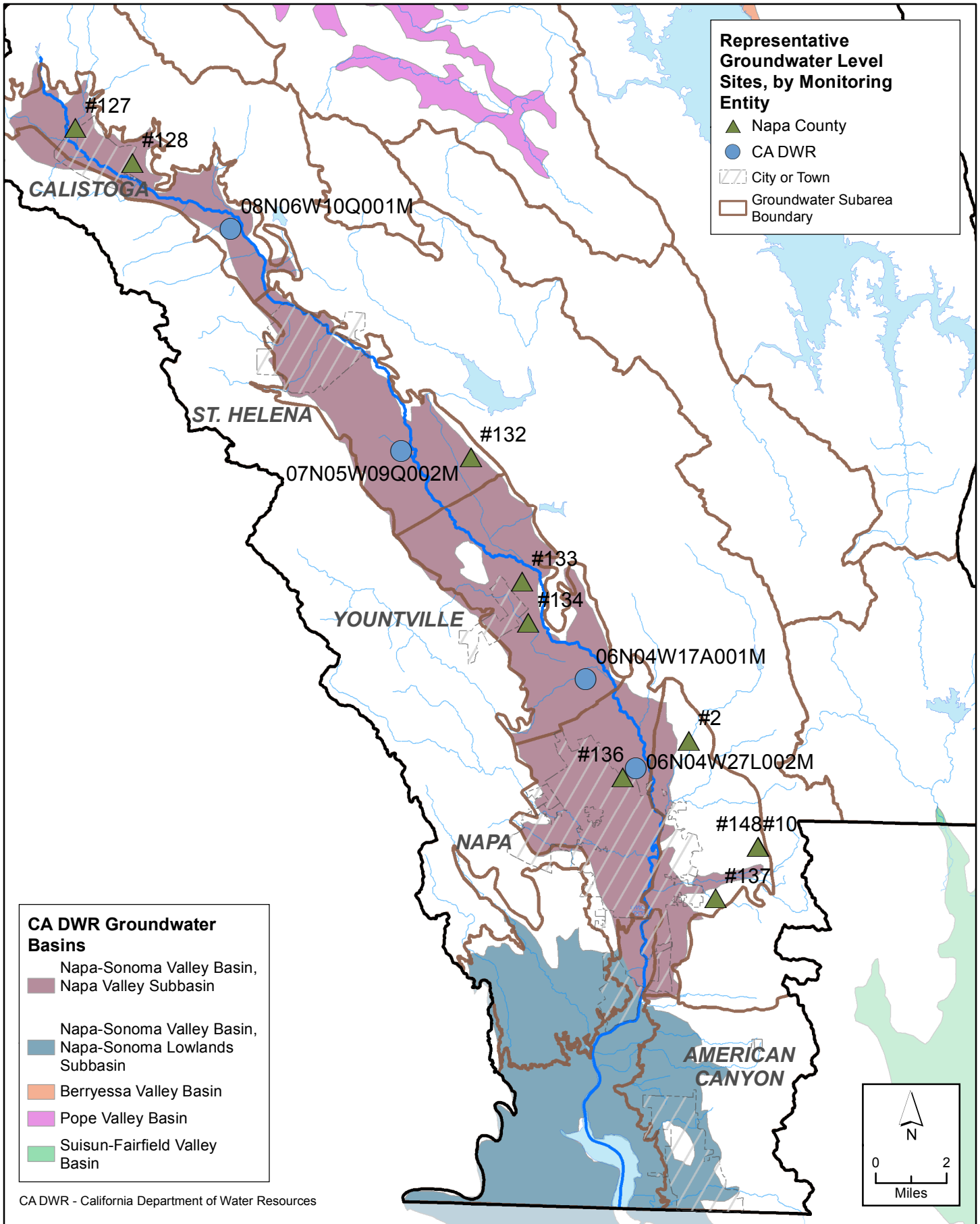
MST Subarea

- Between spring 2014 and spring 2015 groundwater levels increased or remained stable in 18 of 21 wells with long-term records, with water level increases of at least 10 ft. in 9 wells.

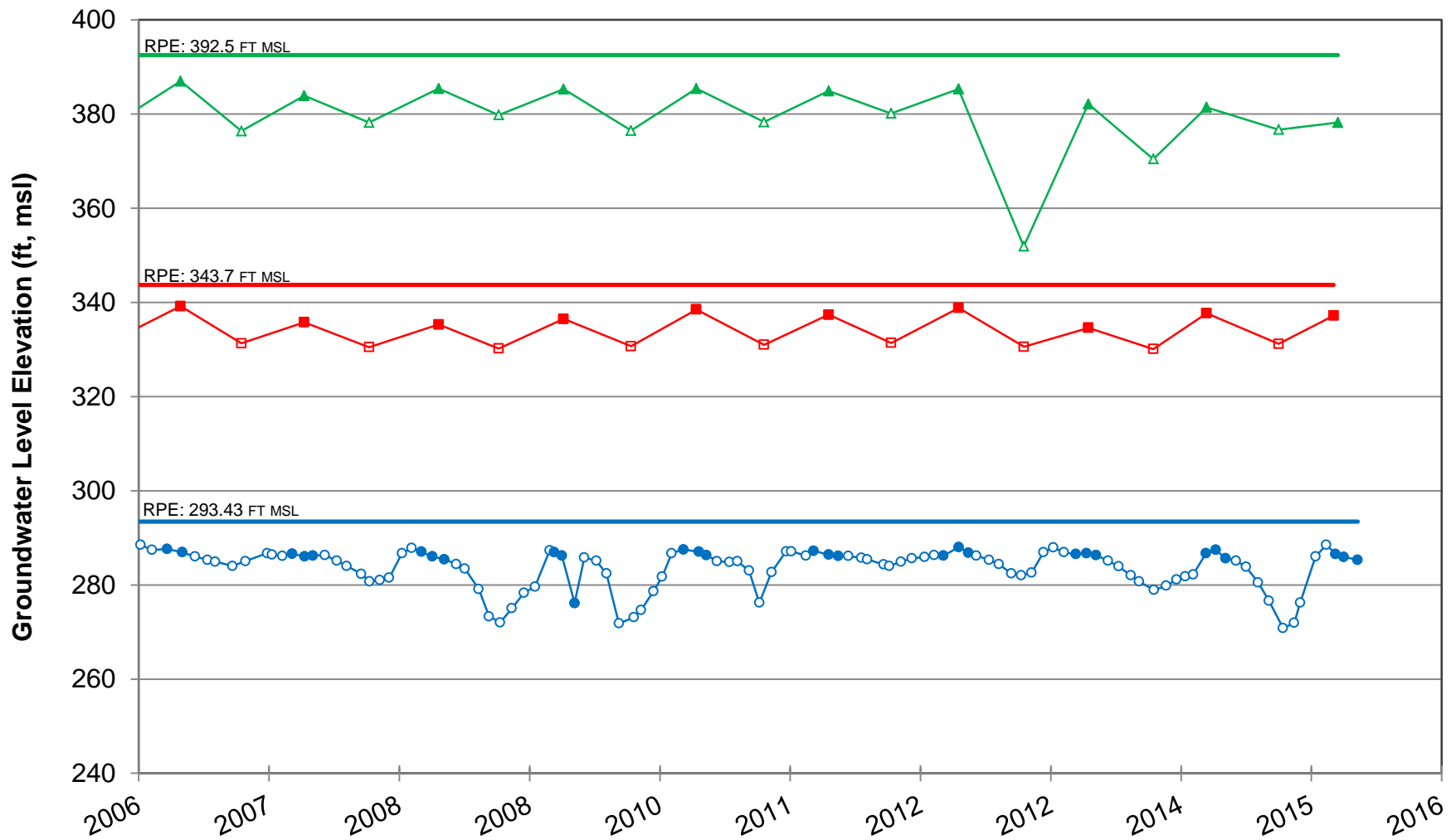
Carneros Subarea

- Although no currently monitored wells have long-term data records, between spring 2014 and spring 2015 groundwater levels were stable in 9 of 10 wells with at least two years of data.

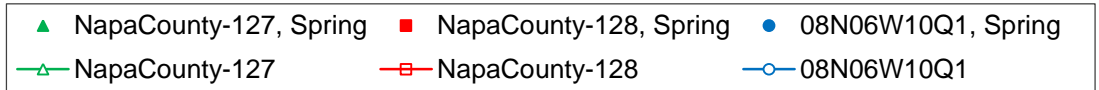
3. Currently monitored wells in the Napa Valley Floor with long-term records show that, where drought-related water level declines have been observed in the past, water levels in spring 2015 were above the levels recorded in spring during the 1976/1977 drought, which was the worst drought on record in both Napa Valley and throughout California.
4. In August 2015, the County began interim monthly monitoring at a subset of 9 wells in the Napa Valley Floor to address data gaps identified in the 2014 Groundwater Monitoring Program Annual Report, which recommended more frequent data collection.
 - The August 2015 data show that groundwater levels are consistent with previous late summer/fall season readings at these wells, indicating no unexpected declines over the summer at these locations.



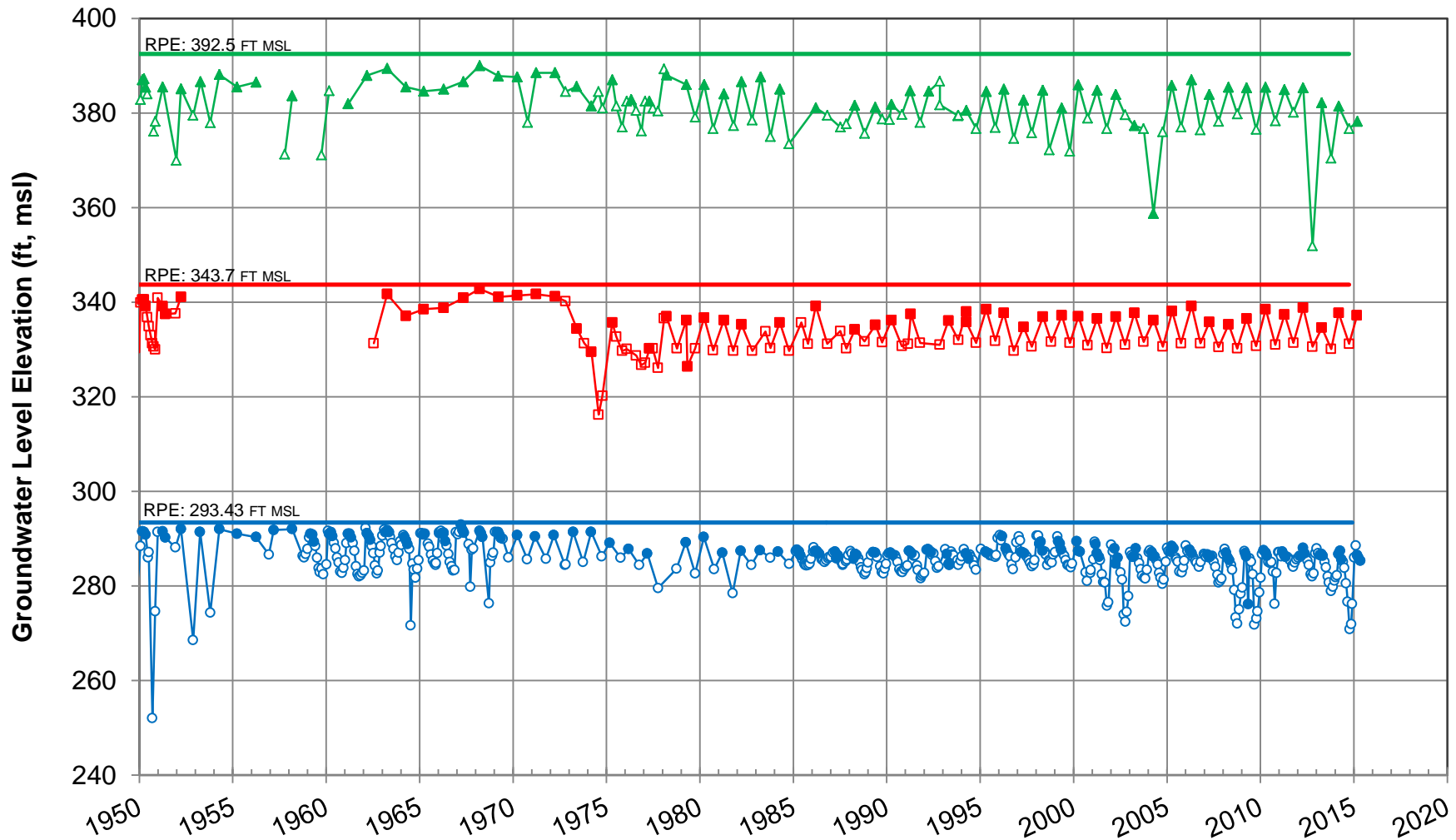
X:\2014 Job Files\14-108\GIS\Mapfiles_Napa County 2015 Rep Hydrograph Sites and Monthly GWL Sites.mxd



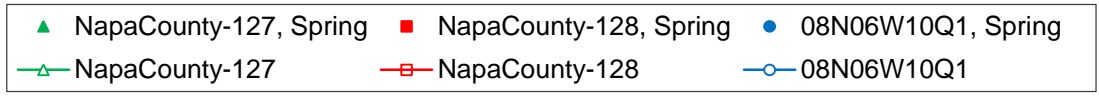
RPE = Reference Point Elevation
 msl = mean sea level, North American Vertical Datum of 1988



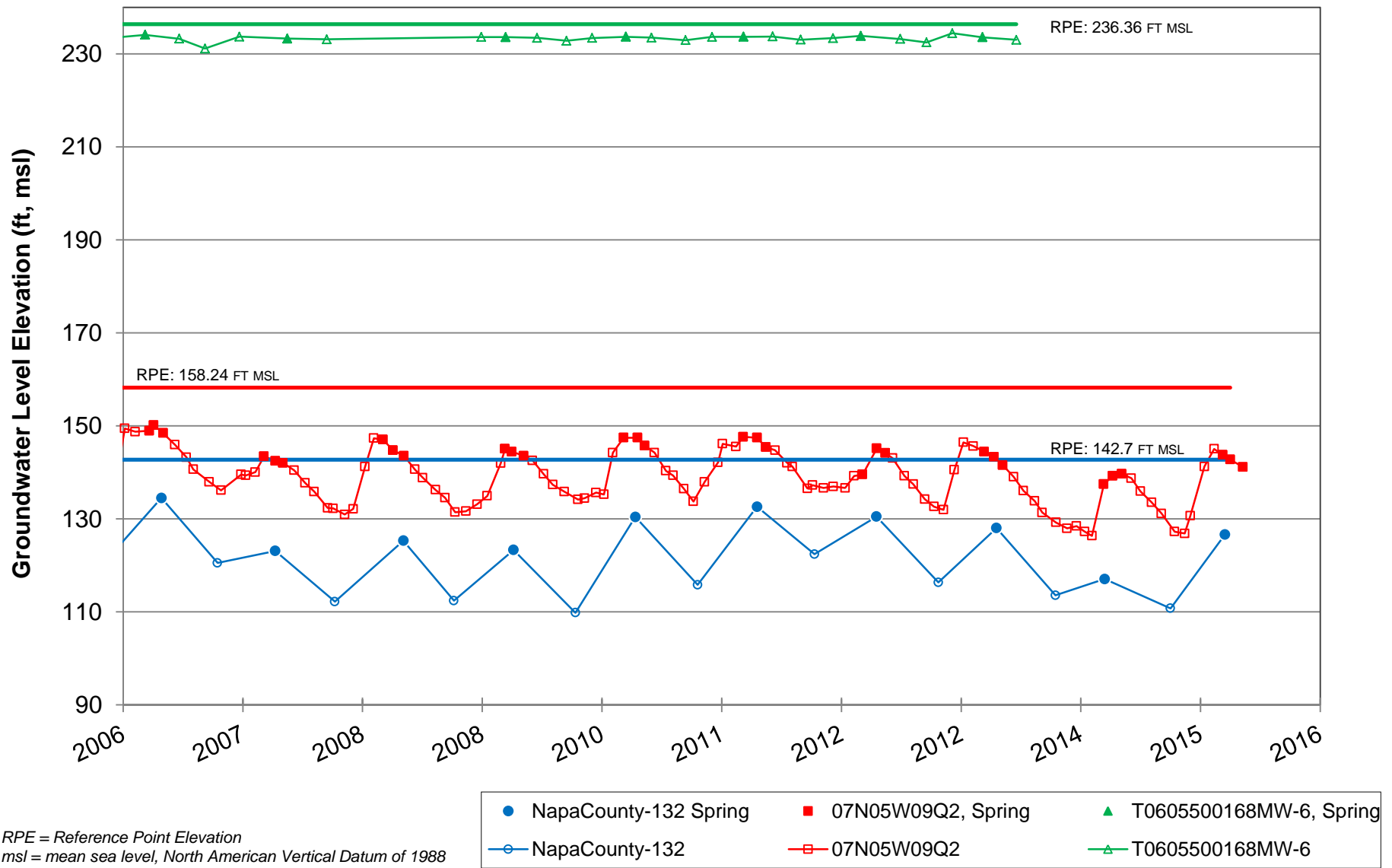
X:\2014 Job Files\14-054\WICC Web Site\Representative Hydrographs_full.xlsx\Calistoga



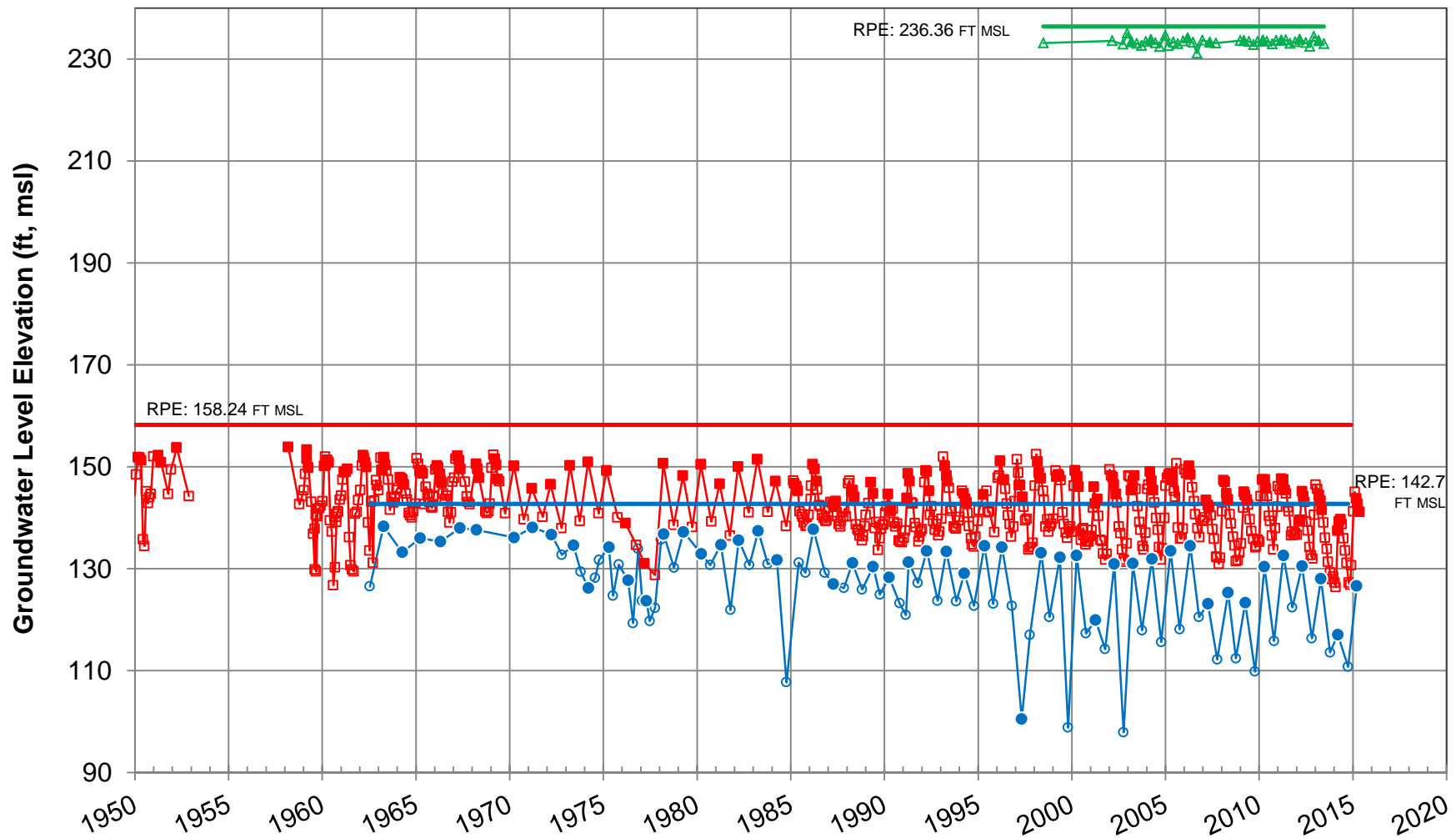
RPE = Reference Point Elevation
 msl = mean sea level, North American Vertical Datum of 1988



X:\2014 Job Files\14-054\WICC Web Site\Representative Hydrographs_full.xlsx\Calistoga



X:\2014 Job Files\14-108\Data\Representative Hydrographs_full.xlsx\Helena



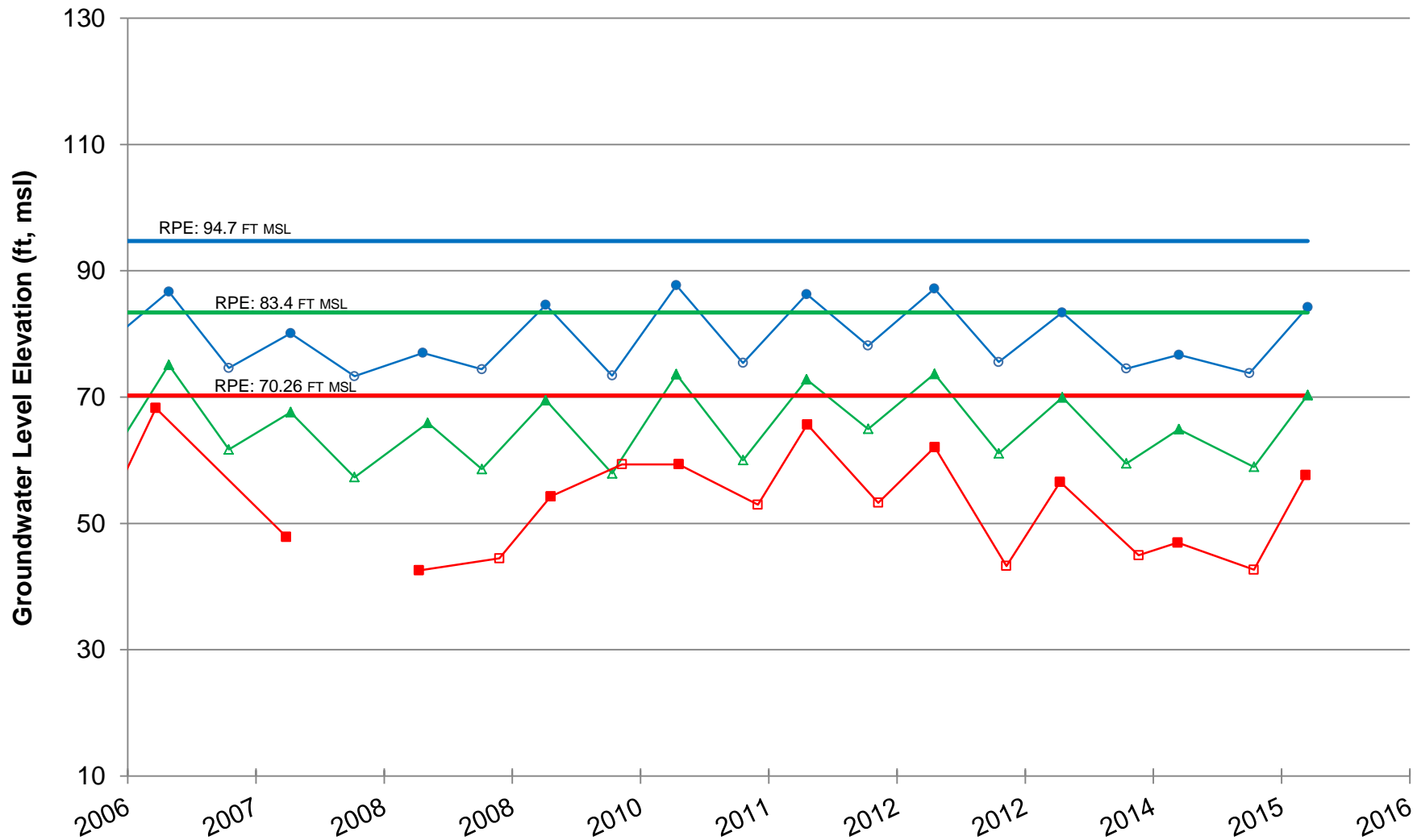
RPE = Reference Point Elevation
 msl = mean sea level, North American Vertical Datum of 1988

- NapaCounty-132 Spring
- 07N05W09Q2, Spring
- ▲ T0605500168MW-6, Spring
- NapaCounty-132
- 07N05W09Q2
- △ T0605500168MW-6

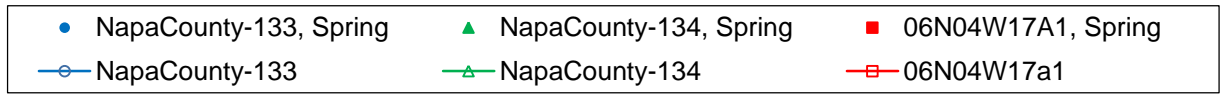
X:\2014 Job Files\14-108\Data\Representative Hydrographs_full.xlsx\Helena



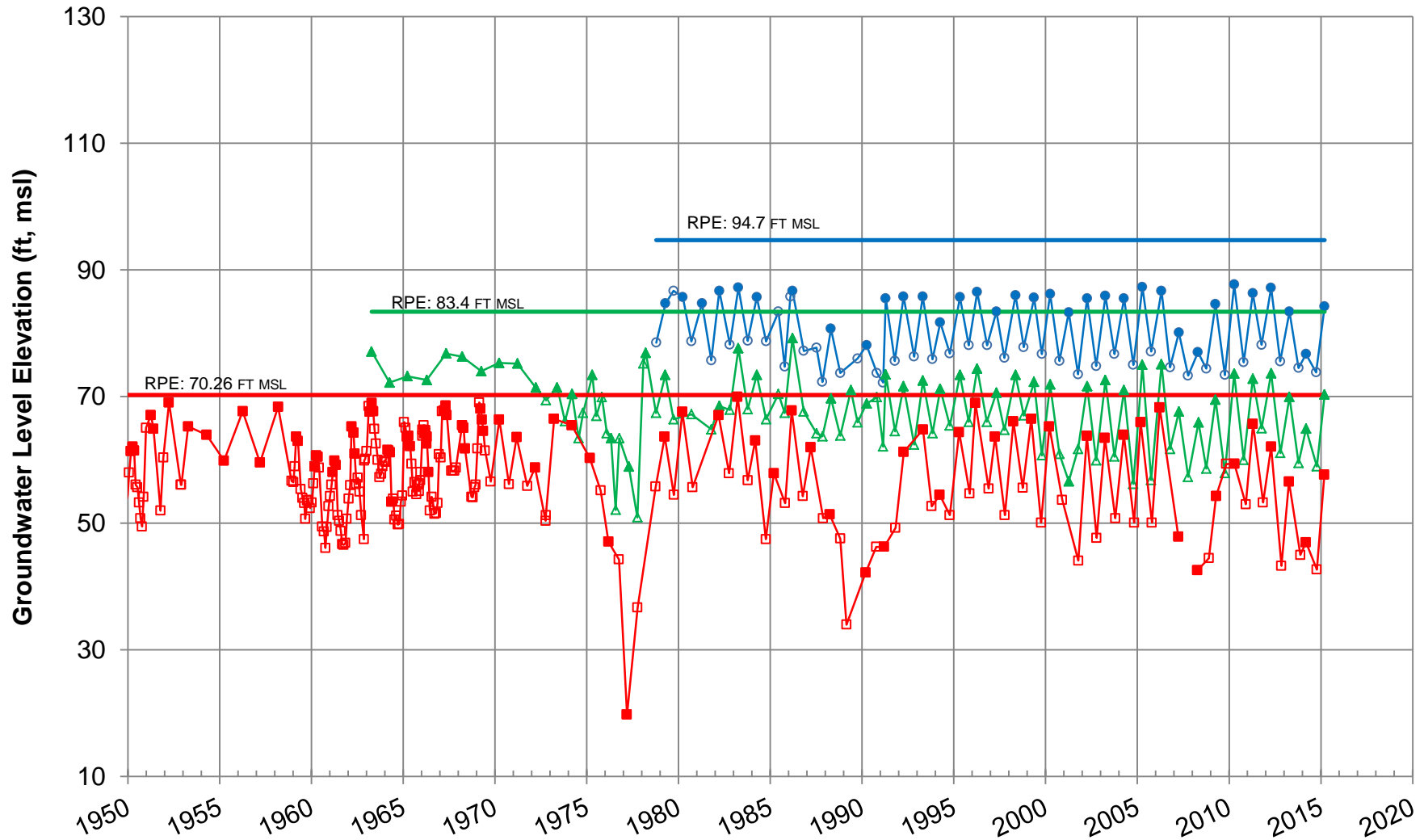
**Representative Groundwater Hydrographs
 Subarea: Napa Valley Floor - St. Helena**



RPE = Reference Point Elevation
 msl = mean sea level, North American Vertical Datum of 1988



X:\2014 Job Files\14-054\WICC Web Site\Representative Hydrographs_full.xlsx\Yountville



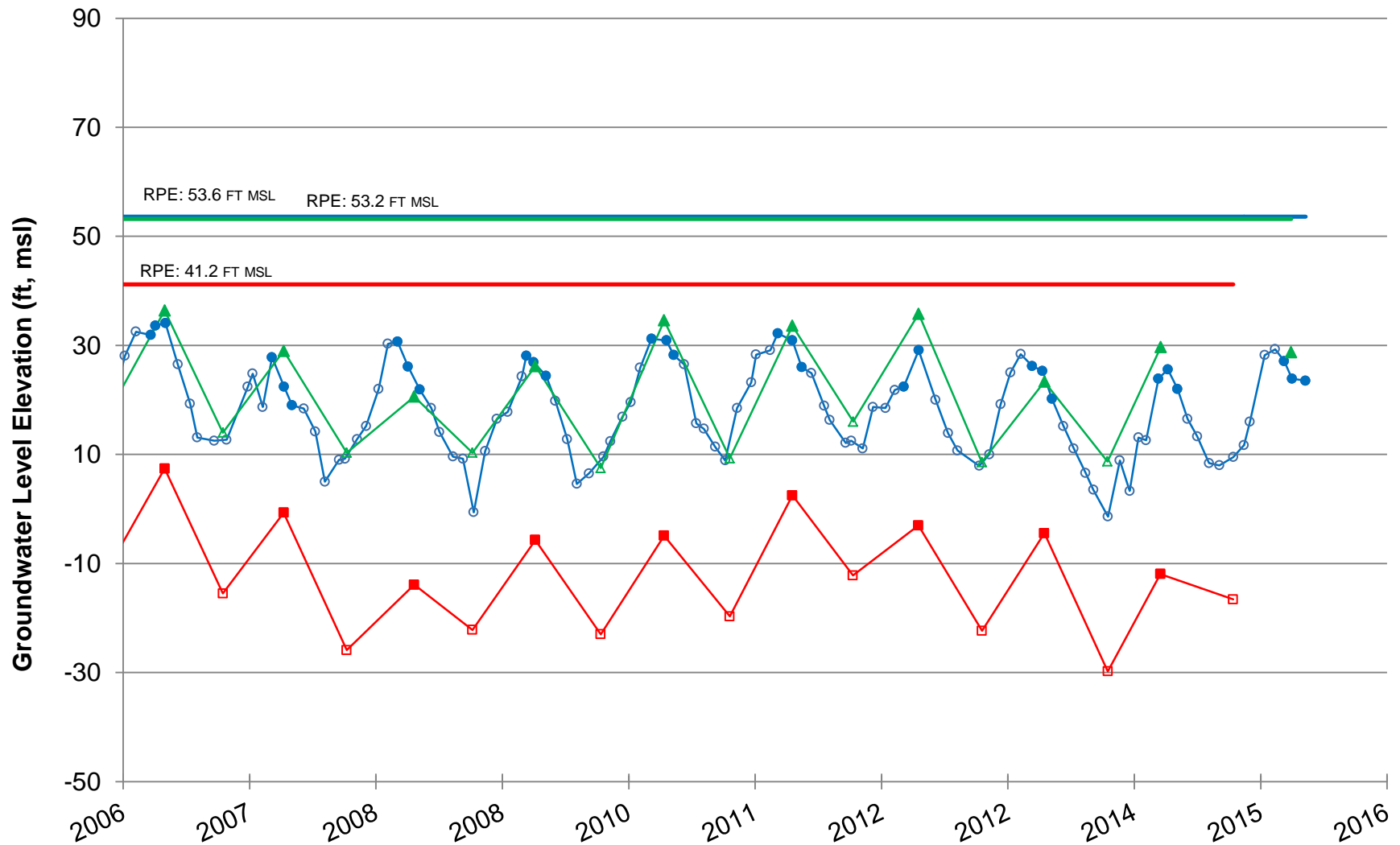
RPE = Reference Point Elevation
 msl = mean sea level, North American Vertical Datum of 1988

- NapaCounty-133, Spring
- ▲ NapaCounty-134, Spring
- 06N04W17A1, Spring
- NapaCounty-133
- △ NapaCounty-134
- 06N04W17a1

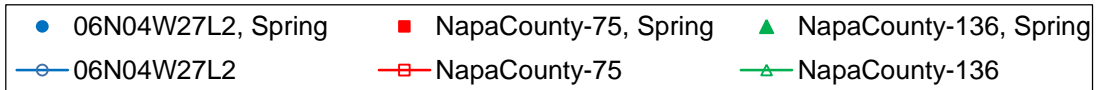
X:\2014 Job Files\14-054\WICC Web Site\Representative Hydrographs_full.xlsx\Yountville



Representative Groundwater Hydrographs
Subarea: Napa Valley Floor - Yountville



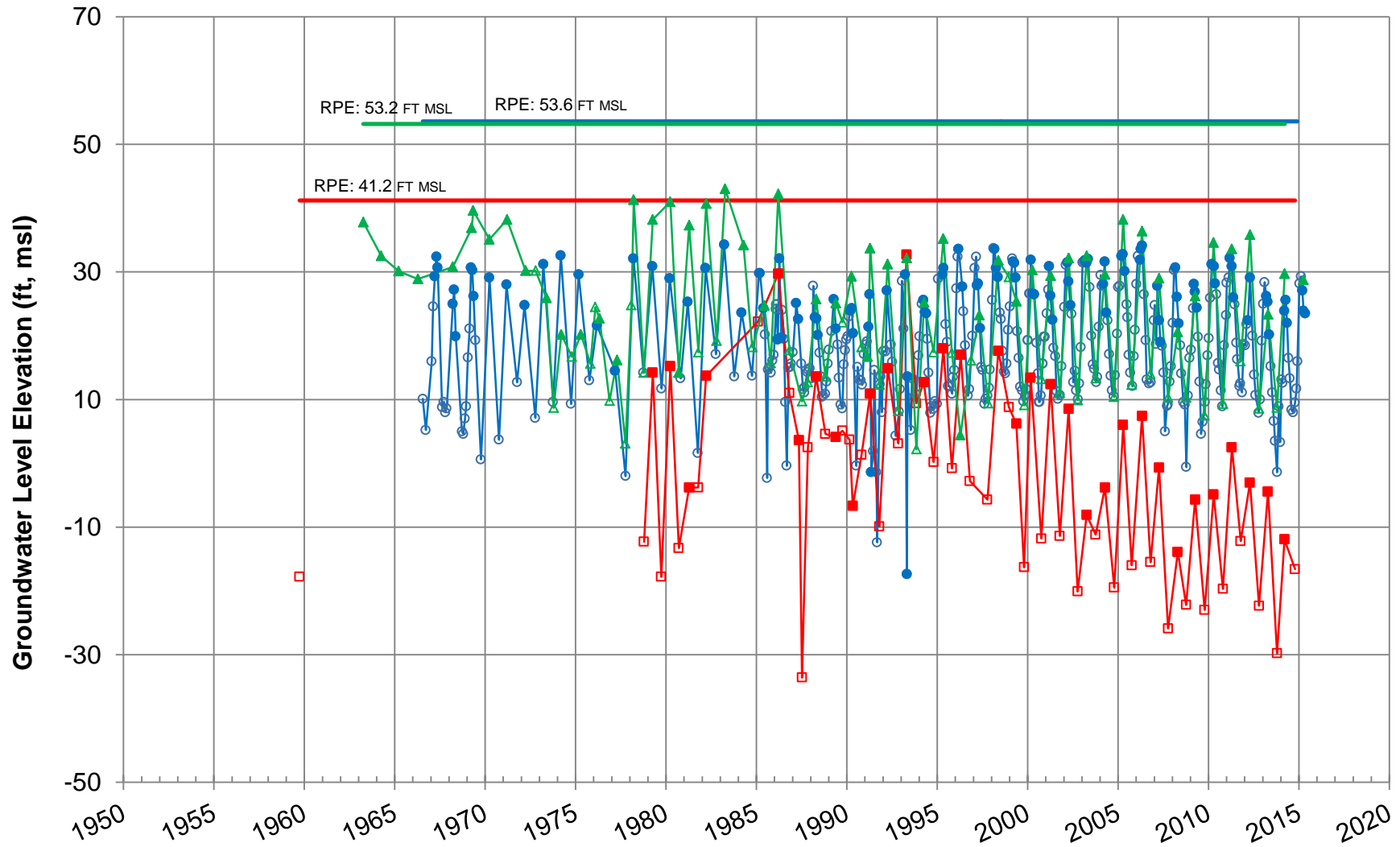
RPE = Reference Point Elevation
 msl = mean sea level, North American Vertical Datum of 1988



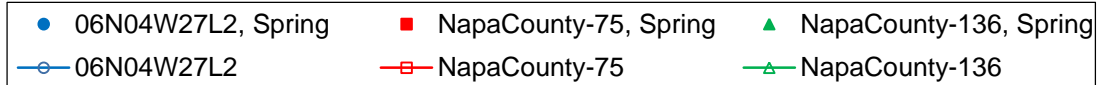
X:\2014 Job Files\14-054\WICC Web Site\Representative Hydrographs_full.xlsx\Napa



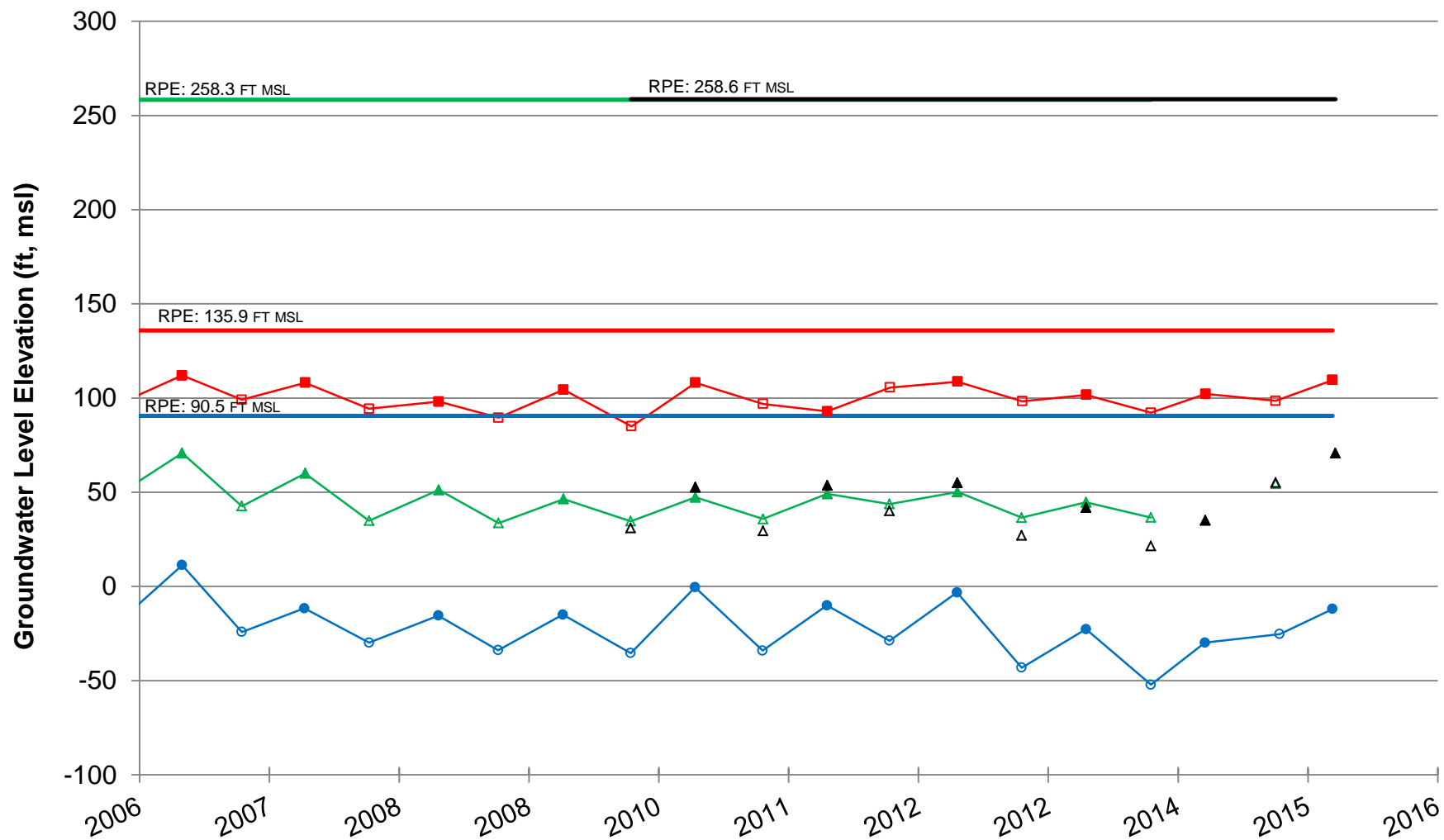
**Representative Groundwater Hydrographs
 Subarea: Napa Valley Floor - Napa**



RPE = Reference Point Elevation
 msl = mean sea level, North American Vertical Datum of 1988



X:\2014 Job Files\14-054\WICC Web Site\Representative Hydrographs_full.xlsx\Napa



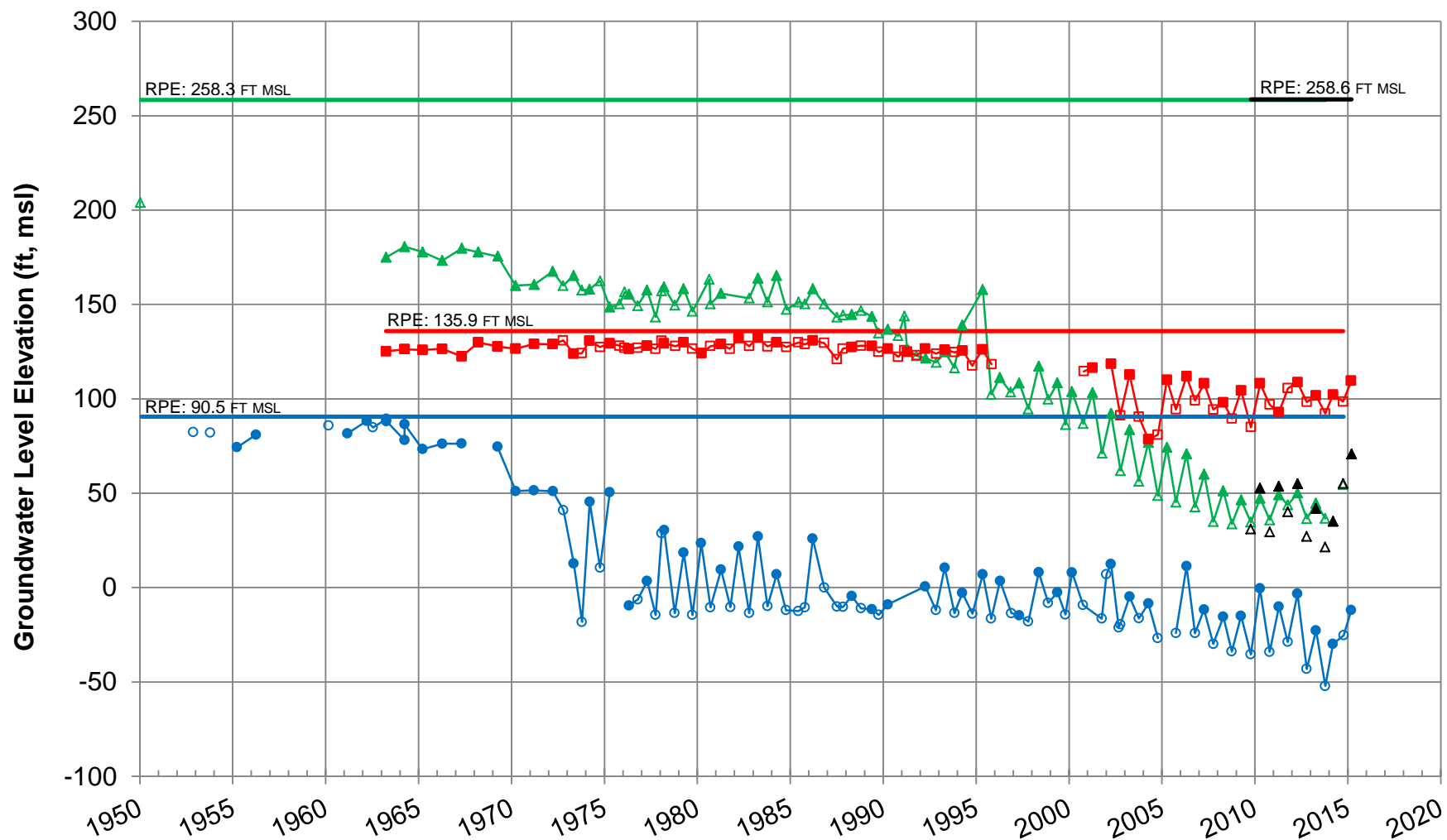
RPE = Reference Point Elevation
 msl = mean sea level, North American Vertical Datum of 1988

- NapaCounty-2, Spring
- ▲ NapaCounty-10, Spring
- NapaCounty-137, Spring
- NapaCounty-2
- △ NapaCounty-10
- NapaCounty-137
- ▲ NapaCounty-148, Spring
- △ NapaCounty-148

X:\2014 Job Files\14-054\WICC Web Site\Representative Hydrographs_full.xlsx\MST



**Representative Groundwater Hydrographs
 Subarea: Napa Valley Floor - MST**



RPE = Reference Point Elevation
 msl = mean sea level, North American Vertical Datum of 1988

X:\2014 Job Files\14-054\WICC Web Site\Representative Hydrographs_full.xlsx\MST

- NapaCounty-2, Spring ▲ NapaCounty-10, Spring ■ NapaCounty-137, Spring
- NapaCounty-2 △ NapaCounty-10 □ NapaCounty-137
- ▲ NapaCounty-148, Spring △ NapaCounty-148



Representative Groundwater Hydrographs
Subarea: Napa Valley Floor - MST



The 2016 Watershed Awareness Calendar Needs Your Photos!

The Watershed Information & Conservation Council (WICC) of Napa County and the Napa County Resource Conservation District (RCD) are looking for photos for the 2016 Watershed Awareness Calendar.

The theme of this year's calendar will be "Wild Napa: Wildlife of Napa County."

We are seeking for photos showcasing native wildlife of our region. The focus of the calendar is on native wildlife, we will NOT accept photos of domesticated animals such as swans, livestock, horses, and pets.

We will select twelve photographs to be featured in the calendar as well as many smaller photos to be placed in various spots throughout the calendar.

How to Submit Photographs

Photographs may be submitted electronically as JPEG or TIFF files and must be accompanied by an entry form. The deadline for submitting entries is 5pm on Wednesday, September 30th, 2015.

All entries must be high-resolution JPEG (.jpg or .jpeg) or TIFF (.tif or .tiff) files. The image resolution should be 1600 x 1200 pixels minimum. We suggest using a camera that can take photos between 6 and 18 megapixels to achieve maximum resolution.

Photos should be emailed to NapaRCD@gmail.com and should not exceed 25 MB in size.

2016 Watershed Awareness Calendar Photo Submission Form

Name: _____

Phone #: _____

Email: _____

Image File Name: _____

Where was the photo taken? _____

When did you take this photo? _____

Submit this form and photographs to: NapaRCD@gmail.com

If you have questions, or need help submitting your photographs, call (707)252-4188 x111
or email NapaRCD@gmail.com

By submitting this form, it is hereby agreed:

1. You will retain the copyright and all other rights to photographs you submit except for those rights specifically listed below in lines 2 and 3.
2. You are granting the NCRCD and the WICC a non-exclusive, irrevocable, royalty-free license to publish the photographs you submit in editorial, educational, promotional and other uses. All published photographs will be credited with the caption "© Photographer's Name."
3. Your photo may be cropped, silhouetted, faded or overprinted with other graphic elements. You also grant the NCRCD and the WICC the right to use your name in connection with the photograph.
4. Photographs submitted must be the original work and exclusive property of the photographer.

About Your Entries:

You may enter more than one photograph, but the photographs should be sent separately due to file size.

You must fill out an entry form for your photo(s) to be accepted. Please provide a title and description for each photo you enter. Personal information will be kept private and viewable only by NCRCD and WICC staff members.

You will retain the copyright and all other rights to photographs you submit except for those rights specifically listed below:

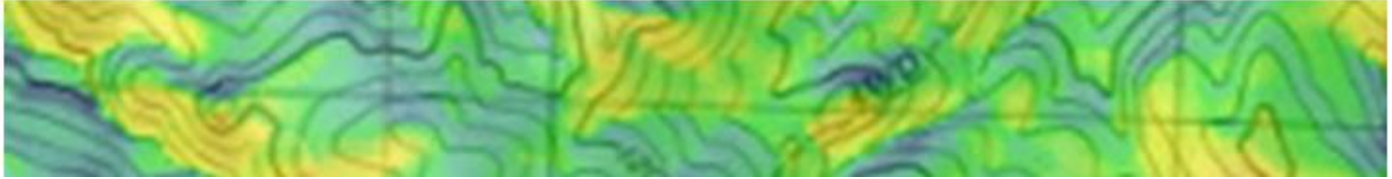
You are granting the NCRCD and the WICC non-exclusive, irrevocable, royalty-free license to publish the photographs you submit for editorial, educational, promotional and other uses. All published photographs will be credited with the caption "© Photographer's Name."

Your photo may be cropped, silhouetted, faded or overprinted with other graphic elements. You also grant the NCRCD and the WICC the right to use your name in connection with the photograph.

Photographs submitted must be the original work and exclusive property of the photographer.

TBC3 Terrestrial Biodiversity Climate Change Collaborative

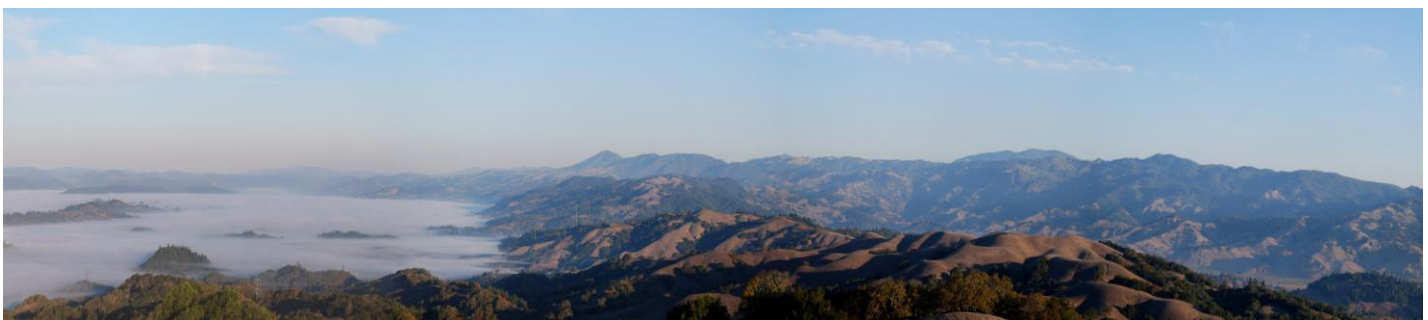
a project of Pepperwood's Dwight Center for Conservation Science



What is TBC3? A unique collaboration of climate and ecosystem experts engaged in the development of a peer-reviewed scientific framework to support climate adaptation strategies for natural resources in California's Coast Ranges.

Our Mission is to narrow the gap between cutting-edge research and climate smart conservation strategies with a focus on ecosystem-based approaches to increasing the resilience of our region's life and landscapes.

Why TBC3? California has a growing population, a dynamic economy, and one of the best networks of protected open spaces in the world. Our parks and working lands protect biodiversity, provide important ecosystem services, and are vital to our quality of life. In the next century, California—and the planet—will face dramatic changes in climate coupled with increased urbanization and habitat fragmentation. Threatened habitats and species may disappear from reserves that were created for their protection, and conversely, protected areas set aside today may serve as critical refuges or stepping stones for species migrating across fragmented landscapes in the future. Understanding how climate may stress our watersheds and ecosystems is critical. Ecosystem services provided by natural open spaces will be central to integrated adaptation strategies for both our urban and rural communities. Today's decisions regarding acquisition and management of protected areas and working lands could profoundly impact our region's watersheds and biodiversity for centuries to come.



What can TBC3 do for you? TBC3 invites land and water managers - including park and open space agencies, land trusts, watershed planners, water districts, and other decision makers - to explore potential partnerships focused on the co-production of science-based tools to inform long-term, adaptive management approaches to natural resource management. By working with TBC3, you work directly with the authors of the data to define the appropriate use for your project or natural resource challenge. *To learn more you can contact Dr. Lisa Micheli at lmicheli@pepperwoodpreserve.org.*

see reverse for more details

Pepperwood's Terrestrial Biodiversity Climate Change Collaborative **TBC3** *cont'd*

Who is TBC3? Co-chairs Drs. David Ackerly of UC Berkeley's Department of Integrative Biology and Lisa Micheli of Pepperwood's Dwight Center for Conservation Science lead a team of hydrologists, biologists and conservation planners from multiple University of California campuses, USGS, Point Blue Conservation Science, the Creekside Center for Earth Observation, and the Bay Area Open Space Council with support from the Gordon and Betty Moore Foundation.



TBC3 members pictured: Michelle Halbur, Adina Merenlender, Celeste Dodge, Stu Weiss, Lorraine Flint, Alan Flint, Lisa Micheli, Sam Veloz, Naia Morueta-Holme, David Ackerly, Nicole Heller, Meagan Oldfather, Rachel Olliff, Andrew Weitz. Not pictured: Alicia Torregrosa, Jason Kreitler, Prahlada Papper.

Our work TBC3 develops science-based products for adaptive management of natural resources in the face of climate change. Our interdisciplinary knowledge base delineates current and potential future relationships between climate, hydrology, fire, and terrestrial and freshwater ecosystems. We translate complex data into simplified tools for land and water managers in response to specific user needs. Example projects and products underway include the following.

- High-resolution climate and hydrology projections from the California Basin Characterization Model (BCM) that capture historic conditions plus 18 projected climate futures in monthly time-steps at a 270 m spatial scale.
- A dynamic vegetation model projecting how climate may drive the potential distribution patterns of native vegetation cover and habitats at a landscape unit scale.
- Application of a fire-modeling algorithm that incorporates BCM soil moisture and plant productivity indicators.
- A pioneering fog-frequency map for the Bay Area and environs based on weather satellite sources.
- A Climate Smart Watershed Analyst for watershed managers to extract simplified reports regarding the past and future of their resources.
- Integration of climate resilience into the Bay Area Open Space Council's Conservation Lands Network, a regional conservation plan for protecting biodiversity in the Bay Area.
- A vulnerability assessment for Climate Ready North Bay developed in concert with land and water local government agencies based in Marin, Sonoma, Napa and Mendocino counties.
- A pilot *sentinel site* at Pepperwood that collects real-time weather, water and biota monitoring data to measure the health of resources, test scientific hypotheses, and inform on-the-ground adaptive management strategies.
- Participation in numerous technical advisory committees and workshops with research and management colleagues to advance the practice of adaptation planning.

For more information or to request a presentation please contact Lisa Micheli, PhD
lmicheli@pepperwoodpreserve.org at the Dwight Center for Conservation Science at Pepperwood
www.TBC3.org

Napa Valley Community Foundation

<http://www.napavalleycf.org/>

What is a Community Foundation?

<http://www.napavalleycf.org/what-is-a-community-foundation/> (5 min. video overview)

What We Do

We mobilize resources, inspire giving, build knowledge and provide leadership on vital community issues to improve the quality of life for all in Napa County. We are a public charity; a grantmaking foundation; a philanthropic advisor; and a staging ground for people, resources and ideas. Every day, we link donors to projects that do good in our community.

We look for charitable projects that make a lasting difference. With a bird's-eye view of the nonprofit sector and knowledge gained from more than 200 site visits each year to local charities, we know where there are gaps, opportunities, needs, new ideas and great leaders.

We rally our donors to support key projects, while helping them pursue their own agendas. We help donors pursue their passions, and find important projects where those passions overlap. Working in this way, we multiply the impact of individual givers, while honoring the personal preferences of those who entrust us with their resources.

We believe there is strength, and greater impact, in numbers. We cultivate relationships with other funders, and create opportunities for our donors to collectively support critical projects—not to the exclusion of their own goals, but where they share an interest in a particular need or opportunity. Our projects have been supported by hundreds of local givers, and have attracted several million dollars in additional resources from regional and statewide foundations, including: The California Endowment; The California Wellness Foundation; The James Irvine Foundation; The David & Lucile Packard Foundation; and The William & Flora Hewlett Foundation.

Where We Are

Napa Valley is a place with deep roots and big dreams. A community where we honor tradition even as we branch out boldly in new directions.

We have extraordinary assets here, but significant challenges as well.

Challenges around housing, education, immigration, inequality, water, land use and transportation, to name a few. Challenges which uniquely confront rural counties like ours, where there is little organized philanthropic capital at the ready to address them.

In San Francisco, foundations distribute \$678 per capita each year. In Napa County, that number is \$75.

That's why partnering with local donors is so critical to us, and to this community. We seek to bring together the financial and intellectual capital of civic-minded people, and to focus dollars and energy on the most relevant opportunities and challenges in Napa Valley.

To encourage giving where we are, we must meet donors where they are.

So we work ardently, on behalf of our donors, to support the giving that they want to do—in the hope that they will be inspired, as appropriate, to participate in the giving that we want to do.