

NAPA COUNTY REGIONAL PARK AND OPEN SPACE DISTRICT

Goal: Preserve, Restore and Enjoy the Moore Creek Watershed

Why Moore Creek?

- A significant source of drinking water for the City of Napa.
- An ecologically rich and diverse watershed.
- A critical link in a possible hiking and riding trail extending from Lake Hennessey to the Oat Hill Mine Trail and on to Mt. St. Helena.
- Protecting the whole watershed is realistic thanks to prior conservation efforts that have protected much of the western side of the watershed. With the District's acquisition, more than half of the creek and watershed is now protected through public ownership and conservation easements.



How: Improve septic systems

- Replace aging ranch house septic system next to creek with engineered hillside system.
- Install composting toilets for public use. This will be the first legal installation of composting toilets in Napa County, and will provide a test of their effectiveness.

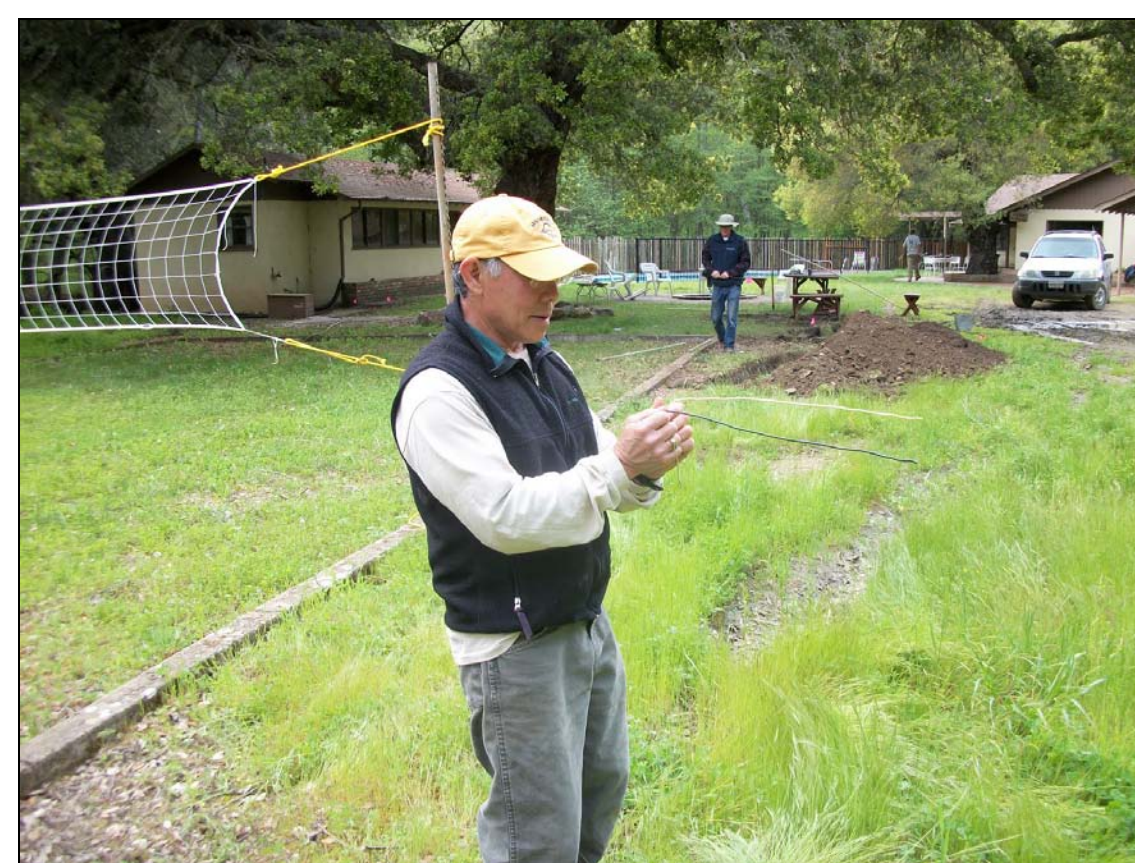
Lesson: Dowsing doesn't work for locating sewer lines.



How: Remove invasive plants

- First target French Broom --a serious threat but not yet hopelessly beyond control.

Lesson: It takes lots and lots of volunteers, first to pull mature plants, then many years of plucking seedlings each spring until the seed bank is used up.



How: Buy Land

- Acquire key parcels, because public ownership facilitates undertaking comprehensive restoration and stewardship as well as allow public use

How: Stabilize creek banks

- Use volunteers to plant willows, buckeyes and oaks along unstable creek banks.
- Lesson: Native plant restoration projects are popular with volunteers.



How: Reduce sediment in creek

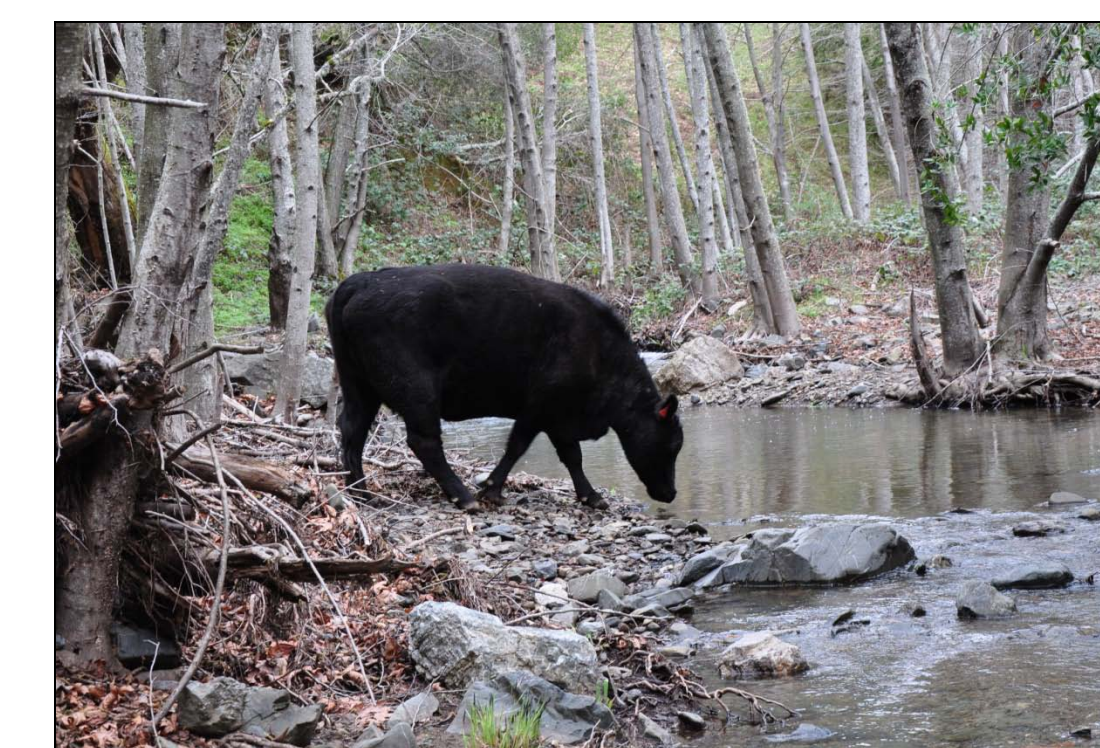
- Reroute existing trails away from creek.
- Reduce erosion from existing dirt road.

Lesson: Hooray for volunteers.

How: Improve grazing practices

- Remove cattle from creek by installing fencing and providing off-stream water troughs.
- Time grazing to protect water quality and control invasive plants.

Lesson: Use NRCS expertise to develop range management plan in consultation with grazer(s).



How: Remove trash dumps

- Remove tons of trash left by prior users, including appliances and other objects dumped in gullies in a misguided attempt to control erosion.

Caution: We're still trying to figure out how to remove partially buried trash without causing new soil disturbance and erosion.

How: Involve People

- Encourage wildlife observation nature education, non-motorized recreation, environmental camping and volunteer projects.

The best way to assure the lasting preservation of our natural resources is to involve volunteers in stewardship and to encourage all the public to enjoy the outdoors.



How to contact us:

Napa County Regional Park & Open Space District
1195 Third Street, Rm 210, Napa, CA 94559
www.NapaOutdoors.org