

## Members

Diane Dillon  
Mark Luce  
Eric Sklar  
Steven Rosa  
Mark Van Gorder  
Karen Slusser  
Leon Garcia  
David Graves  
Jeff Reichel  
Phill Blake  
Don Gasser  
Kate Dargan  
Jeffrey Redding  
Robert Steinhauer  
Charles Slutzkin  
Marc Pandone  
Richard Camera

## Alternates

Harold Moskowitz

## AGENDA

### REGULAR BOARD MEETING

**Thursday, August 24, 2006 at 4:00 p.m.**

**2nd Floor Conference Room, Hall of Justice Building,  
1125 Third Street, Napa CA**

## Staff Representatives

Patrick Lowe,  
**Secretary**  
Deputy Director,  
Conservation Div., CDPD

Jeff Sharp,  
**Watershed Coordinator**  
Planner III,  
Conservation Div., CDPD

Laura Anderson,  
**Counsel**  
Attorney IV,  
County Counsel's Office

1. **CALL TO ORDER & ROLL CALL** (Chairman)
2. **APPROVAL OF ACTION MINUTES**  
Regular meeting of March 23, 2006, April 27, 2006 and May 25, 2006 (Chairman)
3. **PUBLIC COMMENT**  
In this time period, anyone may comment to the Board regarding any subject over which the Board has jurisdiction, or request consideration to place an item on a future Agenda. No comments will be allowed involving any subject matter that is scheduled for discussion as part of this Agenda. Individuals will be limited to a three-minute presentation. No action will be taken by the Board as a result of any item presented at this time. (Chairman)
4. **ANNOUNCEMENTS** (Board/Staff)
  - a. **Article on WICC WebCenter published in *InfoTEXT***, a newsletter for the Information Technology Division of the American Planning Association (Staff)
  - b. **CalFed Ecosystem Restoration Program Selection Panel recommends \$1,475,243 for local projects in Napa County** (Staff)
  - c. **Napa County Baseline Data Report (BDR) receives another award** – California Chapter of the American Planning Association recognizes the BDR for “Innovative use of Technology Award” (Staff)
  - d. Others (Board/Staff)

5. **UPDATES/REPORTS:**

- a. Update on County **General Plan Update** process, community workshops and General Plan **Steering Committee activities** (Board/Staff)
- b. **Board Member terms of office** and review of position notification, application and Board of Supervisor's nomination process (Board/Staff)
- c. Others (Board/Staff)

6. **UPDATE, DISCUSSION AND POSSIBLE DIRECTION TO STAFF REGARDING THE NORTH COAST INSTREAM FLOW POLICY, THE STREAM AND WETLAND SYSTEM PROTECTION POLICY AND THE NAPA RIVER SEDIMENT TMDL PROCESS:**

Update, discussion and possible direction to staff regarding: 1) policy under development by the State Water Resources Control Board Division of Water Rights to protect and manage instream flow for Northern California Coastal streams, 2) policy being developed by the San Francisco Bay and North Coast Regional Water Quality Control Boards to protect streams and wetlands systems by improving regulatory consistency by amending the region(s) Water Quality Control Plan(s), and 3) Napa River sediment TMDL developments, including Napa County comments and next steps in the TMDL/Basin Planning Processes (Staff)

7. **DISCUSSION AND POSSIBLE DIRECTION TO STAFF REGARDING THE WICC'S ROLE AS AN ADVISORY COMMITTEE, AUTHORITY TO SUPPORT WATERSHED GROUPS AND ORGANIZATIONS, AND POTENTIAL DEVELOPMENT OF A POLICY BY WHICH TO GAUGE VARIOUS LEVELS OF WICC SUPPORT:**

Discussion and possible direction to staff regarding the WICC Board's role as an advisory committee to the Board of Supervisors, the Board's authority in that capacity to support various projects, grants and activities undertaken by watershed groups and organizations, and the potential for the development of a Board policy to uniformly determine various levels of WICC support (Staff/Counsel)

8. **UPDATE, DISCUSSION AND POSSIBLE RECOMMENDATION TO STAFF ON THE DEVELOPMENT, FUNDING AND INFRASTRUCTURE NEEDED TO SUPPORT THE BOARD'S WATERSHED MONITORING PROGRAM, AND PRESENTATION OF LOCAL ASSESSMENT EFFORTS IN SUPPORT OF MONITORING GOALS AND OBJECTIVES:**

Update, discussion and possible recommendation to staff on the current development, long-term funding requirements and infrastructure needed to support and implement the WICC Board's Watershed Monitoring Program, and presentation of local examples of assessment and monitoring efforts underway that support the Monitoring Program's goals and objectives (Staff/SFEI)

9. **FUTURE AGENDA ITEMS** (Board/Staff)

- a. Milliken Creek flooding evaluation and restoration proposal (Staff)
- b. Others (Board/Staff)

10. **NEXT MEETING:**

**Regular Board Meeting of September 28, 2006 – 4:00 PM**

Hall of Justice Building, 2<sup>nd</sup> floor Conference Room, 1125 Third Street, Napa

11. **ADJOURNMENT** (Chairman)

**Note: If requested, the agenda and documents in the agenda packet shall be made available in appropriate alternative formats to persons with a disability. Please contact Jeff Sharp at 707-259-5936, 1195 Third St., Suite 210, Napa CA 94559) to request alternative formats.**





# APA INFOTEXT

Information Technology Division of the American Planning Association  
 Summer 2006 • Issue 86

## Tool Integration

Message from the Chair	2
Call for Submissions	3
Call for 2007 IT Conference Sessions	3
Upgrading the Planning Toolkit	4
Engaging the Community at Different Scales	6
Upcoming Conferences	8
REAL CORP 007	9
Watershed Planning Online Platform	10
PSRC Using Technology	12
2007 IT Division Awards	14
2006 National Conference IT Activities	15



Illustration by Jocelyn Hittle

# Online Platform Integrates Tools for Watershed Planning

*A tool for information sharing, public involvement and watershed management*

*By Jeff Sharp, Conservation Division*

*Napa County Conservation, Development and Planning Department*

## Napa County

Napa County, California  
Conservation,  
Development and  
Planning Department

[www.co.napa.ca.us](http://www.co.napa.ca.us)



Watershed Information  
Center & Conservancy

[www.napawatersheds.com](http://www.napawatersheds.com)



Napa County encompasses over half a million acres (507,437) and has three major watersheds: the Napa River, Putah Creek, and Suisun Creek Watersheds. Protecting the quality and quantity of water in these watersheds are two goals of watershed protection efforts in Napa County. In addition, the Napa River and many other streams throughout Napa County, historically have supported large numbers of steelhead, chinook salmon, and coho salmon. Unfortunately, their populations have declined sharply in the past several decades. Coho salmon became extinct in the Napa River Watershed in the 1960s and steelhead are now protected under the Endangered Species Act.

Recognizing the need to protect and restore Napa County's water quantity and quality as well as remaining steelhead and salmon populations, many groups and individuals are actively involved in watershed protection. These efforts include monitoring species abundance, improving the condition of existing fish habitat, expanding habitat through stream restoration and barrier removal, and educating the public about the values of steelhead and salmon and the importance of protecting these vanishing species.

## The Watershed Information Center and Conservancy

After a 4-year study examining watershed management policies in Napa County, the Watershed Information Center and Conservancy (WICC) was formed in 2002 by the Napa County Board of Supervisors. The WICC was formed to protect sensitive lands, facilitate the restoration of priority habitats, support existing stewardship programs, part-

ner with cities to address urban impacts and cost sharing, conduct public outreach, and coordinate research, monitoring, data management and the compilation of baseline watershed conditions. WICC, which is governed by a 17-member Board of Directors representing the cities and towns in Napa county, the County Board of Supervisors and a broad range of stakeholders, will guide and support community efforts to maintain and improve the health of Napa County's watershed lands.

## The WICC WebCenter, powered by TownSquare™

In fulfillment of its mission, "to support the community in its efforts to maintain and improve the health of Napa County's watershed lands" (2005 Strategic Plan), the WICC, with seed money from the US Army Corps of Engineers, launched a community-based "WebCenter" at [www.napawatersheds.org](http://www.napawatersheds.org).

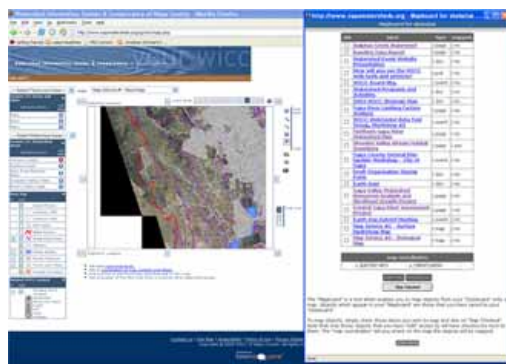
This suite of interactive tools, created using TownSquare™, has become an integrated online resource that is now available to all those who are working to protect and enhance Napa County's sensitive watersheds and support local watershed stewardship. This site also meets the need of providing outreach and educational information for the public and useful communications and management tools for groups working in various watersheds.

The major goal of the WICC WebCenter is to enhance partnerships, collaboration, cooperation and consistency among scientists, educators, policy makers, teachers, land owners and the community, and to provide the single best source for information and research pertaining to Napa County's watersheds. The WebCenter provides a platform for the integration of a set of online tools that work in concert to meet these goals. WICC WebCenter features include:

- ◆ An online master calendar of watershed activities and events
- ◆ An interactive online community that is open to individuals and organizations

working in Napa County

- ◆ Centralized news and information to support the activities of scientists, educators and land managers working in Napa County
- ◆ Online discussions and polls
- ◆ A wide variety of map views of neighborhoods, watersheds and streams that can be 'personalized' by linking information, images or websites. Personalized maps can then be stored in a personal clickboard for future use and discussion
- ◆ In-depth information about local watershed groups, their activities and research.
- ◆ A searchable, knowledge-based library of data, reports and images of Napa County's watersheds
- ◆ Email updates, information notices and event announcements that are 'personalized' to each users' interests and needs
- ◆ A personal online file cabinet (called a 'clickboard') where users can easily store and retrieve information from the site
- ◆ Resources and tools to support groups working in the Napa County's watersheds and information about how to get involved
- ◆ Online educational tools and resources for teachers and parents.



**The WebCenter allows for documents, events, discussions, other pages, polls, and even other saved map views to be placed on a map**

calendar that links the Watershed Groups' schedules to the main WICC calendar.

Many watershed stewardship groups find the WICC WebCenter an invaluable resource, allowing them the ability to publish information online and vastly simplify the logistics of developing and managing land-owner-based watershed stewardship. It provides an essential link between local groups and helps to ensure that group efforts benefit from the work of others also working to improve the health of Napa County's watersheds.

The WICC has invited the community at large—individuals as well as organizations—to join this exciting collaboration and to share information that will help maintain and improve the health of local watersheds. The WICC WebCenter is the community's online forum to stay informed, contribute information and research and support watershed organizations and activities.

The WebCenter is an excellent model of how integrated web technology can assist in project management and communication. Tools that have normally been used separately—online calendars, message boards, online mapping, forums, etc.—are now capable of integrating to enhance the ease of tool use and improve the level of detail of information available and feedback collected. This integration is a boon for planners, municipal governments, civic leaders, non-profit organizations and project management in general.



Visit the WICC WebCenter at [www.napawatersheds.org](http://www.napawatersheds.org).

Learn more about TownSquare™ at [www.migcom.com/webased.html](http://www.migcom.com/webased.html) or contact Steve Kokatas, Director of Interactive Technology, MIG, Inc. at (510) 845-7549.

### Watershed Information Center & Conservancy Mission Statement

The Watershed Information Center and Conservancy (WICC) of Napa County will guide and support community efforts to maintain and improve the health of Napa County's watershed lands.



Watershed Information Network

[www.epa.gov/win](http://www.epa.gov/win)





# CALFED Ecosystem Restoration Program

## Selection Panel Provides Initial Recommendations for Napa County Projects

**“Ecosystem Restoration Program Proposal Solicitation for Projects that Assist Farmers in Integrating Agricultural Activities with Ecosystem Restoration”**

---

### **Bioengineering Institute**

[Selby Creek Stream Habitat Restoration and Riparian Revegetation Project](#) (682k) Adobe PDF

Amount sought: \$475,000

Duration: 36 months

Proposal seeks to continue restoration efforts based on the Selby Creek Project (watershed plan) on Selby Creek in the Napa watershed. Proposed project will: gather technical information to describe the watershed, install bioengineering structures to control erosion (stabilize stream banks), expand and re-vegetate the floodplain and create fisheries habitat. Multiple partners (RCD, Napa County Supervisors, Napa Vintners Association involved in project restoration, community outreach, and education.

[Recommendation: Reconsider if Revised](#) (97k) Adobe PDF \$475,000

---

### **California Land Stewardship Institute**

[Fish Friendly Farming Environmental Certification Program](#) (1373k) Adobe PDF

Amount sought: \$1,000,243

Duration: 36 months

Proposed project would continue and expand the Fish Friendly Farming program in the Napa River watershed. The program assesses the site conditions on Napa Valley farms, develops plans for the application of BMPs (by private landowners) to improve water quality and associated salmonid habitat.

[Recommendation: Fund](#) (98k) Adobe PDF





# COUNTY OF NAPA

## General Plan Update Newsletter

### *In this Newsletter:*

- **Help Map Out County's Future at Upcoming Public Meetings**
- **Message from Hillary Gitelman, *Napa County Planning Director***
- **Land Use Remains a Focus for Angwin Residents**
- **Draft General Plan Update and EIR will be Available for Review this Winter**
- **Next Steps for General Plan Update Steering Committee**

## Help Map Out County's Future at Upcoming Public Meetings

### The Economy is the focus of meetings in September

This fall the County will be holding public workshops to discuss a new element of the General Plan about our County's Economy.

While our current General Plan has minor references to economic development, devoting an Element to this topic in the General Plan will strengthen the County's efforts to support a strong economy that benefits all of our residents.

It's important for us to know how you feel about different strategies to ensure that the County's economy remains healthy and that we target policies to areas and populations requiring attention. We are asking for your views so we can better plan for the future.

During these public meetings, we will discuss a variety of issues of interest to residents. Some of these topics will include:

- Characteristics of an economy based on agriculture
- Maintaining a balance of jobs and housing in the county
- Areas and strategies for diversifying the economy
- Developing and maintaining an adaptable workforce

Join us for these important meetings. Together we can map out Napa County's future.

**September 13, 2006** **6:30 PM**

Yountville Community Hall  
6550 Yount Street  
Yountville, CA 94599

**September 21, 2006** **6:30 PM**

Pope Valley Farm Center  
5800 Pope Valley Road  
Pope Valley, CA 94567

## Message from Hillary Gitelman, *Napa County Planning Director*

We are nearing the half-way point in the General Plan Update process, and a lot of great work has been done. It has been over a year since this project was formally kicked off. Since that time, the General Plan Steering Committee has examined each element in the existing General Plan and provided their guidance regarding needed changes. In addition to the monthly Steering Committee meetings, we have hosted a number of public meetings and workshops throughout the County and conducted targeted interviews with members of the County's Hispanic community.

All the comments we have received, whether via the meetings and interviews, or through letters and e-mails, will help us formulate both the draft General Plan Update and a draft Environmental Impact Report (EIR).

The County will release these documents for public review this winter, providing an opportunity for everyone to review what we have outlined and make additional recommendations so that the documents can be adjusted to reflect a shared vision for the future. Our goal remains to have an updated General Plan in place by early 2008.

While we have made tremendous progress, we still have lots of work to do. Involvement from the public now is every bit as important as it was at the beginning. We encourage County residents to continue sharing their ideas with us.

County staff is available this summer to visit community groups to make General Plan Update presentations to their membership. The County is

also hosting at least one additional public meeting in Angwin devoted to discussing land use as well as meetings this fall devoted to economic development. Additionally, the public is always welcome to attend our monthly Steering Committee meetings. Information on our website is updated regularly: [www.napacountygeneralplan.com](http://www.napacountygeneralplan.com).

Thank you again for your continued support and participation.

Hillary Gitelman



## Land Use Remains a Focus for Angwin Residents

### More public meetings devoted to future land uses in the Angwin area

The Napa County Office of Conservation, Development and Planning held a meeting on July 20th in Angwin to discuss possible changes to the General Plan's Land Use Map intended to better reflect the Angwin community. The County's meeting came two days after officials from Pacific Union College (PUC) and Triad took questions from the community at an Angwin Community Council meeting.

At both meetings, and at an earlier General Plan workshop in March, Angwin residents expressed their concerns about making any major changes to Angwin. Their affection for Angwin's "small town America" feeling was clear, as were the large number of planning issues that will need to be considered in the course of any further discussions. These issues include everything from sewer and water services, to traffic, commercial services, agricultural enterprises, tree preservation, etc.

Anticipating many future meetings about these issues, the County staff welcomed the comments from all residents on July 20th and thanked them for their interest and commitment to working on the General Plan Update.

"Working together, we will determine what changes are appropriate to the policies and map that describe Angwin," said Planning Director Hillary Gitelman. "We know there are a lot of questions that need to be answered and the PUC/Triad collaboration gives all of these questions a special urgency. I'm confident we can craft a General Plan Update that is both in line with the desires and expectations of Angwin residents, and also supports the PUC as an important part of this community. It's going to be difficult, but we can do it."

The County will host another meeting in Angwin on August 23. Join us and share your views on how to shape the Angwin community. The meeting will be held in the Fireside Room behind the church at Pacific Union College, 10 Angwin Ave., Angwin, CA 94508, at 6:30 p.m.

## Draft General Plan Update and EIR will be Available for Review this Winter

### Public can comment on documents in early 2007

The County's Conservation, Development and Planning Department, working in collaboration with the General Plan Steering Committee and Pacific Municipal Consultants, plans to release a draft of the General Plan Update together with a Draft Environmental Impact Report (EIR) this winter. County residents will be invited to review and comment on the draft General Plan Update and the Draft EIR, which will be the subject of a 45-day public comment period and at least one public hearing. Stay tuned for more information towards the end of the year.





## Next Steps for General Plan Update Steering Committee

The General Plan Steering Committee is tackling the General Plan Update piece by piece, or Element by Element. The Steering Committee has discussed each of the elements at prior meetings and is now reviewing the draft goals and policies that will be included in the draft of the General Plan Update circulated for public review this winter.

Steering Committee members will continue to share their views on the various elements, and work toward a common understanding of the

issues. By attending the meetings and sending us your ideas, you can help the Steering Committee guide the General Plan Update process.

## UPCOMING STEERING COMMITTEE MEETINGS

Topic	Details	Steering Committee Members
 <p>* including County-wide, topical, and geographically specific policies</p>	<p><b>August 30, 2006</b>                      Napa County Office of Education                      Boardrooms A, B &amp; C                      2121 Imola Ave.                      Napa, CA 94559                      12 p.m.</p>	<p>Peter McCrea, Chair                      Tom Andrews, Vice-Chair                      George Bachich                      Mary Ellen Boyet                      Jon-Mark Chappellet                      Stephen Cuddy                      Debra Dommen</p>
 <p>* including water quality, air quality, natural resources, energy, and solid waste</p>	<p><b>September 27, 2006</b>                      Napa County Office of Education                      Boardrooms A, B &amp; C                      2121 Imola Ave.                      Napa, CA 94559                      2 p.m.</p>	<p>Tom Gamble                      Michael Haley                      Jim Hendrickson                      Conrad Hewitt                      Guy Kay                      Carol Kunze</p>
 <p>* including noise, views and aesthetics, and historic preservation</p>	<p><b>October 25, 2006</b>                      Napa County Office of Education                      Boardrooms A, B &amp; C                      2121 Imola Ave.                      Napa, CA 94559                      2 p.m.</p>	<p>Carole Meredith                      Beth Painter                      Carol Poole                      Jeff Reichel                      Brad Simpkins                      Stuart Smith                      Robert Torres</p>
 <p>* including strategies to preserve and enhance the County's economic vitality</p>	<p><b>November 29, 2006</b>                      Napa County Office of Education                      Boardrooms A, B &amp; C                      2121 Imola Ave.                      Napa, CA 94559                      2 p.m.</p>	<p>Duane Wall</p>

*Note: The content of the meeting is tentative and subject to change. Also, additional meetings may be added. Check our website to stay up to date: [www.napacountygeneralplan.com](http://www.napacountygeneralplan.com).*

The Steering Committee and the County need your participation to ensure that all views are represented.



## Questions? Comments?

To learn more about the Napa County General Plan Update process or if you have questions, please contact:

**Kendall Flint**

*Senior Public Information Officer*  
kflint@napacountygeneralplan.com  
(866) 828-6762

**Hillary Gitelman**

*Napa County Planning Director*  
hgitelman@napacountygeneralplan.com

**Howard Siegel**

*Community Partnership Manager*  
hsiegel@napacountygeneralplan.com

[www.napacountygeneralplan.com](http://www.napacountygeneralplan.com)

Your email address (jsharp@co.napa.ca.us) is subscribed to Napa County General Plan Update

**To view the Newsletter archive:**

[http://www.napacountygeneralplan.com/get\\_involved/newsletter.htm](http://www.napacountygeneralplan.com/get_involved/newsletter.htm)

**To unsubscribe form this list:**

<http://www.napacountygeneralplan.com/napamailer/users/unsub.php?Mem=11443&ConfirmCode=7265e6049d1badeb47e5af2f499>

**BOARD OF DIRECTORS**  
**Watershed Information Center and Conservancy of Napa County (WICC)**  
**Four Year Term**

	<u>Representing</u>	<u>Date of Last Appointment</u>	<u>Term Expires</u>
Donald P. Gasser	Napa County Resource Conservation District	07-13-04	08-06
Katherine (Kate) Dargan	Public at Large	08-26-03	08-06
Karen Slusser	City Council - Calistoga	08-31-04	08-06
Eric Sklar	City Council – St. Helena	02-07-06	08-06
Leon Garcia	American Canyon	04-04-06	08-06
Diane Dillon	Board of Supervisors	01-07-03	12-06
David Graves	Conservation, Development and Planning Commission	08-13-02	12-06
John Reichel	Napa County Land Trust	01-11-05	08-08
Phil Blake	Natural Resource Conservation Service	08-31-04	08-08
Richard L. Camera	Public at Large	08-31-04	08-08
Mark Van Gorder	City Council - Napa	07-26-05	08-08
Steven Rosa	Town Council – Yountville	01-24-06	08-08
Mark Luce	Board of Supervisors	01-11-05	12-08
Harold Moskowitz	Board of Supervisors, Alternate	01-11-05	12-08
Marc v. Pandone	Public at Large	09-13-05	08-09
Jeffrey Redding	Public at Large	09-13-05	08-09
Robert E. Steinhauer	Public at Large	09-13-05	08-09
Charles Slutzkin	Public at Large	09-13-05	08-09

Board of Supervisors' Resolution 02-103 created this Board. The WICC is charged with oversight responsibilities of the Conservancy and Watershed Information Center Programs as recommended by the Phase II Final Report of the Napa River Watershed Task Force. The conservancy program is intended to support restoration and resource protection activities and coordinate land acquisition and restoration projects. The Watershed Information Center is intended to be a long term resource management program that will provide public outreach, educational efforts and monitoring coordination, inventory and assessment, and data management.

Meets fourth Thursday of every month at 4:00 p.m. in the Hall of Justice.





**NOTICE OF PREPARATION OF A SUBSTITUTE ENVIRONMENTAL DOCUMENT (SED) AND  
NOTICE OF PUBLIC SCOPING MEETING FOR THE NORTH COAST INSTREAM FLOW POLICY**



**PROJECT LOCATION / POLICY AREA**

If you would like to remain on the mailing list and receive future announcements about the North Coast Instream Flow Policy, please provide a mailing address and/or email address below and return this form by August 25, 2006, to the State Water Resources Control Board, Division of Water Rights: Karen Niiya; P.O. Box 2000, 1001 I Street, 14th Floor; Sacramento, CA 95812-2000

Name	Agency	Email	
Street	City	State	Zip Code

# Notice of Preparation

Form B

To: State Clearinghouse, Governor's Office of Planning and Research  
(Agency)  
P.O. Box 3044  
(Address)  
Sacramento, CA 95812-3044

**Subject:** **Notice of Preparation of a Draft Substitute Environmental Document**

<b>Lead Agency:</b>	<b>Consulting Firm (If applicable):</b>
Agency Name <u>State Water Resources Control Board</u>	Firm Name <u>North State Resources, Inc.</u>
Street Address <u>P.O. Box 2000, 1001 I Street, 14<sup>th</sup> Floor</u>	Street Address <u>1321 20th Street</u>
City/State/Zip <u>Sacramento, CA 95812-2000</u>	City/State/Zip <u>Sacramento, CA 95814</u>
Contact <u>Karen Niiya or Eric Oppenheimer</u>	Contact <u>Kerri Mikkelsen Rose</u>

The State Water Board's Division of Water Rights (Division) will prepare a Substitute Environmental Document for the proposed North Coast Instream Flow Policy. Although the adoption of state policy for water quality control is exempt from the California Environmental Quality Act (CEQA) requirement to prepare a Negative Declaration or an Environmental Impact Report, (Cal. Code Regs., tit. 14, §§ 15250, 15251, subd. (g)), a Substitute Environmental Document must be prepared for the project. The Substitute Environmental Document will evaluate the potential environmental impacts of the policy and any alternatives or mitigation measures necessary to avoid any significant environmental impacts.

The Division is seeking comments from trustee agencies and interested persons concerning the scope and content of the environmental information to be included in the Substitute Environmental Document.


Please send your response to **Karen Niiya or Eric Oppenheimer** at the address shown above. We will need the name for a contact person in your agency.

The Environmental Checklist may be obtained via the Internet on the State Water Board Website at: [http://www.waterrights.ca.gov/HTML/instreamflow\\_nccs.html](http://www.waterrights.ca.gov/HTML/instreamflow_nccs.html)

You may also receive a copy by writing to the Division of Water Rights, State Water Resources Control Board; 1001 I Street, 14th Floor, P.O. Box 2000; Sacramento, CA 95812, or by contacting Karen Niiya or Eric Oppenheimer at (916) 341-5426, FAX: (916) 341-5400, email: [FlowPolicy@waterboards.ca.gov](mailto:FlowPolicy@waterboards.ca.gov)

**Project Title:** North Coast Instream Flow Policy Substitute Environmental Document

**Project Location:** Not applicable Napa, Marin, Sonoma, Humboldt & Mendocino  
City (nearest) Counties

Name Victoria A. Whitney Signature  Date 7/19/06  
Title Chief, Division of Water Rights, State Water Resources Control Board Telephone (916) 341-5426

**DATE:** July 19, 2006  
**TO:** Distribution List  
**FROM:** State Water Resources Control Board, Division of Water Rights (Division)  
**SUBJECT:** North Coast Instream Flow Policy – Notice of Preparation of a Substitute Environmental Document and Notice of Scoping Meeting

Effective January 1, 2005, Assembly Bill 2121 (Stats. 2004, ch. 943, § 3) added section 1259.4 to the Water Code, which requires the State Water Resources Control Board (State Water Board) to adopt principles and guidelines for maintaining instream flows in coastal streams from the Mattole River to San Francisco and in coastal streams entering northern San Pablo Bay, for purposes of water right administration (North Coast Instream Flow Policy).

The purpose of this Notice of Preparation is: (1) to advise trustee agencies and interested persons that the State Water Board intends to prepare a Substitute Environmental Document for the North Coast Instream Flow Policy, and (2) to seek input on significant environmental issues, reasonable alternatives, and mitigation measures that should be addressed in the Substitute Environmental Document. (No responsible agencies exist for this project because no other agency has authority to carry out or approve the North Coast Instream Flow Policy. Other agencies may have authority to carry out or approve activities that will be subject to the policy, but the project in this case is the policy itself, not the activities that may be subject to the policy.)

**Responses to this Notice of Preparation must be received in writing by the close of business on August 25, 2006.** Responses must be received on schedule to allow complete consideration of all concerns.

**A public scoping meeting has been scheduled** to explain the policy and provide other information to trustee agencies and the interested public. The public scoping meeting will also provide agency personnel and concerned public citizens the chance to submit written comments concerning the range of actions, policy alternatives, mitigation measures, and significant effects that should be analyzed in the Substitute Environmental Document. The public scoping meeting has been scheduled for:

Two Sessions | 3:00 PM – 5:00 PM or 5:30 – 7:30 PM | **August 16, 2006** |  
North Coast Regional Water Quality Control Board; 5550 Skylane Blvd., Suite A; Santa Rosa, CA

## **1.0 Project Description**

The primary objective of the proposed project is to develop a State Water Board policy that provides, through the State Water Board's administration of water rights, for the maintenance of instream flows in coastal streams from the Mattole River to San Francisco Bay and in coastal streams entering northern San Pablo Bay. The policy is likely to address the State Water Board's administration of water right applications; small domestic use and livestock stockpond registrations; existing permits and licenses; change petitions, including transfers, time extensions, and wastewater change petitions. In addition, the Division proposes to include an enforcement element as part of the policy that will govern water right enforcement actions in the coastal streams described above.

In developing the policy, Water Code section 1259.4 authorizes the State Water Board to consider the Draft "Guidelines for Maintaining Instream Flows to Protect Fisheries Resources Downstream of Water Diversions in Mid-California Coastal Streams," which were developed in 2002 by the National Marine Fisheries Service (NMFS) and the California Department of Fish and Game (DFG) (NMFS-DFG Draft Guidelines). Accordingly, the Division proposes to evaluate in the Substitute Environmental Document a policy based on the NMFS-DFG Draft Guidelines.

The NMFS-DFG Draft Guidelines were recommended for use by permitting agencies (including the State Water Board), planning agencies, and water resources development interests when evaluating proposals to divert water from northern California coastal streams. The NMFS-DFG Draft Guidelines were developed to protect and restore anadromous salmonids and their habitat. The Division currently considers the NMFS-DFG Draft Guidelines when reviewing water right applications, but the guidelines have not been adopted as formal State Water Board policy. The NMFS-DFG Draft Guidelines are available at: <http://swr.nmfs.noaa.gov/hcd/policies/Waterdiversion%20guidelines.pdf>

The NMFS-DFG Draft Guidelines recommend that terms and conditions be included in new water right permits for small diversions to protect fishery resources in the absence of site-specific biologic and hydrologic assessments. (Small diversions are defined as direct diversions of three cubic feet per second or less, or diversions to storage of 200 acre-feet per annum or less.) Specifically, the NMFS-DFG Draft Guidelines recommend:

- limiting new water right permits to diversions during the winter period (December 15–March 31) when stream flows are generally high;
- maintaining minimum bypass flows and cumulative maximum rates of diversion to ensure that streams are adequately protected from new winter diversions;
- conserving the natural hydrograph and avoiding significant cumulative impacts by limiting the maximum cumulative volume of water that can be diverted in a watershed;
- constructing storage ponds off-stream rather than on-stream; and
- providing fish screens and fish passage facilities where appropriate.

The Division anticipates that the policy that will be evaluated in the Substitute Environmental Document will cover the same issues as the NMFS-DFG Draft Guidelines, but specific details or criteria may differ. For example, the policy may be expanded to cover small domestic use and livestock stockpond registrations, change petitions, and time extension petitions.

## **2.0 Project Location / Policy Area**

The North Coast Instream Flow Policy will cover the same geographic area as the NMFS-DFG Draft Guidelines, including all coastal streams from the mouth of the Mattole River south to San Francisco Bay and coastal streams entering northern San Pablo Bay. This area includes approximately 5,900 stream miles and encompasses 3.1 million watershed acres (4,900 square miles) including all of Marin and Sonoma counties and portions of Napa, Mendocino, and Humboldt counties (policy area), as indicated on the map.

## **3.0 Potential Alternatives**

No policy alternatives have yet been identified as of the issuance of this Notice of Preparation. The Division seeks additional data and input on policy alternatives from trustee agencies, Tribes, and the interested public. At a minimum, any proposed policy alternatives must be designed to maintain instream flows in coastal streams through water right administration, as required by Water Code section 1259.4. The Division will consider all comments and available and relevant information received during the scoping process.

## **4.0 Probable Environmental Effects to be Analyzed in the Substitute Environmental Document**

The adoption of the North Coast Instream Flow Policy is a certified regulatory program, and therefore is exempt from the requirement to prepare an Environmental Impact Report or Negative Declaration. (Cal. Code Regs., tit. 14, §§ 15250, 15251, subd. (g).) The Division has determined that a Substitute Environmental Document is required for the proposed project. It has also determined that the following environmental issue areas will be evaluated in the Substitute Environmental Document: Aesthetics, Agricultural Resources, Air Quality, Biological Resources, Cultural Resources, Geology and Soils, Hazards and Hazardous Materials, Hydrology and Water Quality, Land Use and Planning, Noise, Recreation, and Utilities and Service Systems.

For purposes of CEQA, the proposed project is adoption of the North Coast Instream Flow Policy. The policy itself will not approve any particular water diversion projects. Moreover, in general, the policy will operate to protect the environment by ensuring that water rights are administered in a manner designed to maintain instream flows. Adoption and implementation of the policy could, however, lead diverters to take actions that could result in indirect environmental impacts.

Future actions that could occur as a result of adoption and implementation of the policy include the removal of existing, on-stream storage reservoirs and the construction of off-stream storage reservoirs. These construction activities could cause short-term impacts such as the following: increases in sediment discharged to streams due to construction or dam removal, temporary visual disturbances due to earthwork activities and vehicular traffic, temporary increases in air pollution from particulate matter and ozone, potential for site-specific erosion, temporary use of hazardous materials, temporary noise impacts, and temporary increases in solid waste generation.

The removal of on-stream reservoirs as a result of adoption and implementation of the policy also could cause long-term impacts. These could include: loss of wetlands, which could adversely affect species that rely on those wetlands for habitat and food; changes to channel and floodplain maintenance processes and riparian zone characteristics, which could affect habitat conditions; a reduction in available storm flow storage capacity, which could cause increased runoff during storm events, increased potential for downstream flooding, increased sedimentation, the potential for mudflow, and the potential for downstream dam failures; a reduction in emergency fire suppression water supplies; and a loss of recreational opportunities such as swimming and fishing.

Adoption and implementation of the policy also could lead water diverters to switch to alternative water supplies in order to avoid any limitations applicable to new water right applications that may be contained in the policy. Some diverters might switch to groundwater pumping, which could impact groundwater levels, potentially resulting in a reduction in summer instream flows. Other diverters might choose to directly divert under riparian rights, instead of seasonally storing water, for which a permit is required. An increased reliance on riparian rights could result in increased surface water diversions during the spring, summer, and fall, potentially reducing instream flows to levels that might cause reductions in or loss of habitat. Decreases in summer groundwater elevations and instream flows due to groundwater pumping and riparian diversions could result in the loss of riparian vegetation. The loss of riparian vegetation could affect terrestrial and aquatic species that rely on riparian vegetation for habitat and food and lead to declines in water quality, such as increased water temperature and fine sediment levels. Finally, some diverters might choose to cease diverting altogether, and fallow lands that are currently being irrigated, or switch to dryland farming, or convert existing farmland to non-agricultural uses.

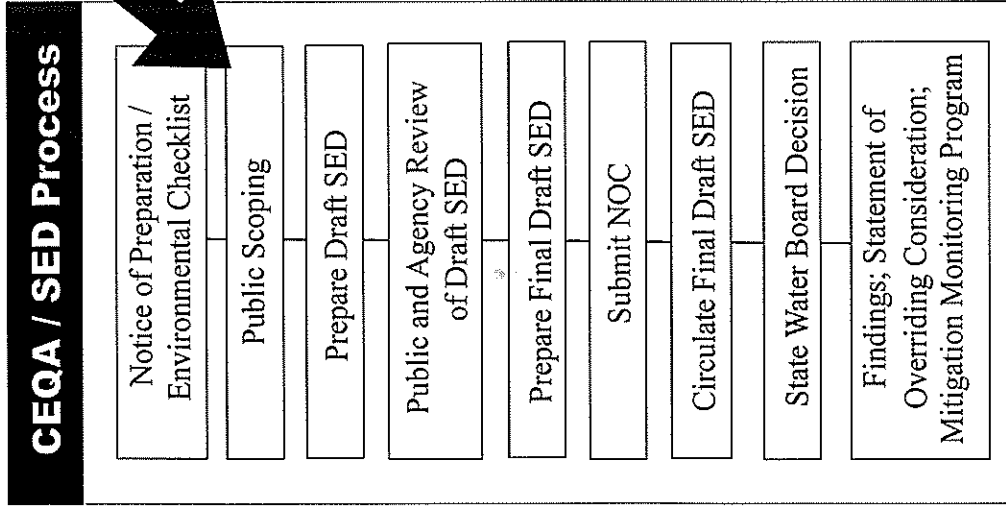
The Substitute Environmental Document will analyze any policy alternatives or mitigation measures that would minimize or avoid the potential environmental impacts described above.

Please send your comments regarding the North Coast Instream Flow Policy Substitute Environmental Document to the address below. When submitting your comments, please identify a contact person in case we have any questions about the comments.

Attention: Karen Niiya or Eric Oppenheimer  
State Water Resources Control Board  
P.O. Box 2000, 1001 I Street, 14<sup>th</sup> Floor  
Sacramento, CA 95812-2000

Phone: (916) 341-5426  
Fax: (916) 341-5400  
Email: [FlowPolicy@waterboards.ca.gov](mailto:FlowPolicy@waterboards.ca.gov)

# Public Involvement Opportunities During the CEQA / SED Process



**August 16, 2006 – Public Scoping Meeting in Santa Rosa, CA**

**August 25, 2006 – Deadline for Agency / Public Scoping Comments**

**Summer 2007 – Public Review / Comment on the Draft SED / Draft Policy**

- Availability of the Draft SED / Draft Policy will be announced in 2007 in local and regional newspapers and notification will be sent to those on the Distribution List.
- The Draft SED / Draft Policy will be available on the State Water Board website: [http://www.waterrights.ca.gov/HTML/instreamflow\\_nccs.html](http://www.waterrights.ca.gov/HTML/instreamflow_nccs.html)
- The State Water Board will provide at least 45 days for public review of the draft SED.
- The 45-day comment period commences with the announcement of the availability of the Draft SED.

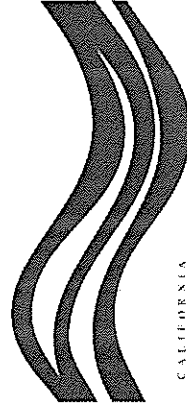
**Summer 2007 – Public Workshop on the Draft SED / Draft Policy**

**Late Fall 2007 – Public Review Final Draft SED / Final Draft Policy**

- Notification will be sent to those on the Distribution List
- The Final Draft SED / Final Draft Policy will also be available on the State Water Board website.

**Winter 2007 – State Water Board Hearing / Adoption Meeting**

*While it is our goal to meet these dates, all dates are tentative and may be adjusted as circumstances dictate during the CEQA / SED process.*



CALIFORNIA

**Water Boards**  
STATE WATER RESOURCES CONTROL BOARD  
REGIONAL WATER QUALITY CONTROL BOARDS

**North Coast Instream Flow Policy Substitute Environmental Document (SED)**

**Written Comment Form  
Public Scoping Meeting**  
**SUBSTITUTE ENVIRONMENTAL DOCUMENT FOR  
THE NORTH COAST INSTREAM FLOW POLICY**

State Water Resources Control Board, Division of Water Rights

Your input is important to us; please use this sheet to submit written comments concerning policy alternatives, significant effects, and mitigation measures that should be included in the Substitute Environmental Document (SED). Your comments will assist in preparation of the SED. Please be sure to provide your name and address, below.

---

---

---

---

---

---

---

---

---

---

---

---

---

---

---

---

---

---

---

---

---

---

---

---

---

---

---

---

---

---

*Additional space? Please use other side.*

**Name\*** \_\_\_\_\_

**Address** \_\_\_\_\_

**City/State/Zip Code** \_\_\_\_\_

*Comments, including names and home addresses of respondents, will be made available for public review. Individual respondents may request their home address be withheld from public disclosure. Please check this box if you wish your name and/or address withheld from public disclosure.*

**Please submit your comments at the Comment Station or send your comments to:**

Karen Niiya or Eric Oppenheimer  
State Water Resources Control Board  
P.O. Box 2000, 1001 I Street, 14<sup>th</sup> Floor  
Sacramento, CA 95812-2000

or  
via e-mail to: [FlowPolicy@waterboards.ca.gov](mailto:FlowPolicy@waterboards.ca.gov)

To ensure that your comments are considered in the SED,  
**written comments must be received by August 25, 2006.**

**Stream and Wetlands System Protection Policy  
California Regional Water Quality Control Boards  
North Coast and San Francisco Bay Regions**

**Introduction**

Staffs of the North Coast and San Francisco Bay Regional Water Quality Control Boards propose to develop amendments to the Water Quality Control Plans (Basin Plans) for the North Coast and San Francisco Bay Regions that will protect stream and wetlands systems, including measures to protect riparian areas and floodplains.

The goals of the proposed Stream and Wetlands System Protection Policy are:

- To achieve water quality standards and protect beneficial uses of waters of the state
- To protect drinking water through natural water quality enhancement and protection of groundwater recharge zones
- To restore habitat and protect aquatic species and wildlife
- To enhance flood protection through natural functions of stream and wetlands systems
- To restore the associated recreational opportunities, green spaces and neighborhood amenities that water resources provide
- To protect property values and community welfare by protecting natural environments
- To encourage local watershed planning and support local oversight over water resources
- To improve Regional Water Board permitting and program efficiency

The Stream and Wetlands System Protection Policy will achieve these goals by recognizing that it is necessary to protect and restore the physical characteristics of stream and wetlands systems—stream channels, wetlands, riparian areas, and floodplains—including their connectivity and natural hydrologic regimes, to achieve water quality standards and protect beneficial uses. The Policy will clarify that stream and wetlands system protection and restoration are viable forms of pollution prevention in all land use settings, and that the strategies of pollutant source control and stream and wetlands system protection need to be integrated to complete the entire watershed water quality management strategy. The Policy will be based on sound scientific principles and will develop reasonable methods to protect water quality.

A single Stream and Wetlands System Protection Policy will be proposed for Basin Plan adoption in the North Coast and San Francisco Bay Regions to improve regulatory consistency. The Policy will serve as a model for other Regional Water Boards and for the state in the protection of water quality. The Policy will promote regulatory efficiency by linking to existing relevant permit conditions and provisions in 401 water quality certifications, timber harvesting plans (THPs), waste discharge requirements (WDRs), WDR waivers, and urban runoff National Pollutant Discharge Elimination System (NPDES) permits. The Policy will also promote general efficiency by linking to the

Regional Water Boards' monitoring programs (e.g., Surface Water Ambient Monitoring Program) and grants program. The Policy will provide incentives for local jurisdictions to develop watershed management plans that can be used by project applicants to offset impacts to stream and wetlands functions when on-site avoidance of impacts is impossible. In this way the Policy will create a vehicle for working with local jurisdictions to develop effective implementation strategies consistent with local stakeholder interests.

### **Policy Framework**

All reasonable alternatives will be evaluated and discussed in an accompanying staff report and implementation plan. In addition to a synthesis of the relevant science and technical data linking physical characteristics to water quality, the staff report will include an economic analysis of the public and private benefits and costs of stream and wetlands system protection. Potential elements of the Stream and Wetlands System Protection Policy may include:

- 1) Developing statewide definitions for function-based beneficial uses of waters of the state.
- 2) Defining functional relationships between streams, wetlands, riparian areas, and floodplains and describing scientifically the importance of each in protecting water quality.
- 3) Compiling case study information linking the physical characteristics of stream and wetlands systems with measurable water quality effects.
- 4) Offering prescriptive solutions to protect water quality based on the preceding analysis. Such solutions may include specific measures as justified, but will otherwise describe the methodology that should be used to avoid, minimize, and mitigate impacts on a watershed or project-specific basis.
- 5) Developing an implementation plan to enhance local jurisdictional development, adoption and implementation of watershed management plans in accordance with the goals of the Stream and Wetlands System Protection Policy.

### **Contact Information**

For more information on the proposed Policy in the North Coast Region, please contact: Lauren Clyde at (707) 576-2674 or [LClyde@waterboards.ca.gov](mailto:LClyde@waterboards.ca.gov) or Bruce Ho at (707) 576-2460 or [BHo@waterboards.ca.gov](mailto:BHo@waterboards.ca.gov). Additional information can also be found online at: <http://www.waterboards.ca.gov/northcoast/programs/basinplan/swspp.html> or by calling the North Coast Regional Water Quality Control Board at (707) 576-2220.



**Stream and Wetlands System Protection Policy  
Public Workshops and CEQA Scoping Meetings  
Summary of Public Comments**

**Introduction**

The San Francisco Bay Regional Water Quality Control Board (Water Board) conducted a series of Public Workshops and California Environmental Quality Act (CEQA) Scoping Meetings regarding the proposed Stream and Wetlands System Protection Policy (Policy). Meetings were held in Oakland, Cupertino, and San Rafael, on May 1, 9, and 15, 2006, respectively. This document summarizes public comments received at those meetings.

**Summary of Comments**

**Scope**

- What extent of the floodplain will be protected by the Policy?
- Will the Policy protect uplands, lakes, lagoons, and vernal pools?
- The Water Board needs to set realistic, achievable goals or face public backlash when lofty, impractical goals are not met.
- Additional beneficial uses of riparian areas should include riparian habitat and sea-level rise buffer.
- The Policy should examine:
  - Connection between water supply and water quality
  - Cumulative effects
  - Impervious surfaces and flash runoff
  - Flood control infrastructure
  - Existing development
  - Public health and vector control
  - Noise impacts from streamside heavy machinery
  - Effectiveness of best management practices
  - Adequacy of existing Water Board policies including the current Water Quality Control Plan for the San Francisco Bay Basin
  - Existing local agency stream protection policies

**Implementation**

- How will the Policy affect local agencies and Water Board permitting requirements?
- What will be the extent of local agency control and implementation of the Policy?
- Will the Water Board apply the Policy differently in separate land-use settings (e.g. urban vs. rural) and watersheds (e.g. pristine vs. degraded)?
- How do the Policy's prescriptive solutions and watershed management plans relate to Total Maximum Daily Loads?
- The Policy needs to assess the capacity of local agencies to implement a comprehensive, watershed-based approach to stream protection.
- Local officials implementing Water Board policies need adequate training in watershed science to perform effectively.

- The Policy needs to clearly define stream systems elements (e.g. stream channel, intermittent stream, ephemeral stream, riparian vegetation, top of bank, riparian zone, etc.) to ensure consistency in implementation.
- The Water Board should create a minimum stream protection standard which local agencies must comply with.
- The Water Board should continue to review, comment and advise on General Plans, CEQA documents, and local ordinances.
- The Water Board's comments on local policy documents are influential and should be expanded.
- The Water Board should endorse model ordinances (e.g., stream setback ordinances).
- A weak Policy could hinder local stream protection efforts.

#### Permit Streamlining and Interagency Coordination

- The Policy should promote Water Board regulatory consistency to ensure predictable outcomes for permit applicants.
- Pre-approved guidelines and standards for streamside projects would give permit applicants guidance and expedite permitting process.
- Improved interagency cooperation (i.e. California Department of Fish and Game, US Army Corps of Engineers, Water Board, etc.) would streamline permitting.
- Permitting for restoration projects needs to be streamlined to facilitate implementation and reduce cost.
- Watershed partnership models have proven successful in streamline permitting and facilitating interagency cooperation. Examples of this include the Tomales Bay Watershed Council, the Wildcat-San Pablo Creek Watershed Council, and the Marin Project Coordination Committee.

#### Funding and Cost

- How will the Policy be funded?
- What resources (i.e. financial, technical) will be available for local jurisdictions to implement the Policy?
- What will be the costs for local agencies to comply with the Policy?
- The Water Board needs to explore creative funding opportunities.

#### Economics

- It is more efficient to protect stream systems as flood management and water quality enhancement zones than to build expensive traditional flood control channels and water treatment facilities to manage and treat storm runoff.
- The community benefits of flood control and recreation outweighs losses to individual property rights.
- Riparian setbacks limit the amount of developable land in a community.
- The Policy's economic analysis must be thorough and defensible to hold up as evidence in court.

#### Mitigation Requirements

- Will the Policy require mitigation for maintenance of existing facilities such as flood control infrastructure?
- Mitigation should not be required for restoration and environmentally progressive projects.

- Mitigation projects should be restored or constructed and proven successful before filling the impacted wetland.
- Mitigation requirements should consider cost and be realistically attainable given site conditions.
- The Policy needs to examine whether off-site mitigation can be considered a better alternative for the environment even when on-site mitigation is possible.

#### Enforcement

- How will the Water Board enforce Policy goals and ensure compliance at the local level?
- The Water Board needs to be more receptive to complaints of water quality violations.
- The Water Board should take stronger enforcement action against gross water quality violators.

#### Other

- The Policy description is too general to give any meaningful comments on policy alternatives, scope of CEQA review, and environmental impacts.
- The Water Board should promote and consolidate political support for the Policy to ensure success.
- The Water Board needs to proceed carefully to determine whether an Environmental Impact Report, negative declaration, or functional equivalent document is necessary to comply with CEQA requirements.
- Daytime Public Workshops and CEQA Scoping Meetings are not sufficient stakeholder outreach.

#### **Contact Information**

For more information about the proposed Stream and Wetlands System Protection Policy, or to submit comments (due May 31<sup>st</sup>, 2006) on the proposed amendment, you can contact Ben Livsey at [Blivsey@waterboards.ca.gov](mailto:Blivsey@waterboards.ca.gov) or 510-622-2308. Additional information can also be found on the Water Board website at <http://www.waterboards.ca.gov/sanfranciscobay/streamandwetlands.htm>.



# **Development of a Watershed Monitoring Program**

A joint effort by WICC/Napa  
County, SFEI and RCD

# Why Monitor?

- Similar to tracking performance of your investments, we want to track environmental performance of public and private investments in watershed protection
- Information is required to communicate, learn, adjust actions and policies

# **Development Steps and Critical Path:**

- 1) Link General Watershed Management Goals to Monitoring Objectives and Key Assessment Questions
- 2) Identify Appropriate Environmental Indicators Capable of Tracking Trends
- 3) Set up Institutional Infrastructure (funding mechanisms, a “home” for stakeholder involvement, data collection & management, quality assurance, peer review, and communication)

# Current Activities and TAC Involvement:

- TAC endorsed Framework for Indicator Development
- Endorsed Draft Assessment Questions –  
*“Are we asking the RIGHT questions?” “Are they RELEVANT in the context of our Watershed Management Goals?”*
- Recommend WICC Board Adoption of Assessment Questions and Initial Set of Indicators



# Anticipated Activities –2006/07:

- Identify and prioritize indicators and develop a range of monitoring designs based on three levels of funding (1. “bare bones,” 2. “should have,” 3. “would like to have”)
- Identify required steps to integrate existing monitoring and assessment activities (e.g. individual NPDES monitoring requirements, local performance tracking, special projects)
- Agree on organizational structure and establish “home” to administer the monitoring program

# **Questions and Discussion**