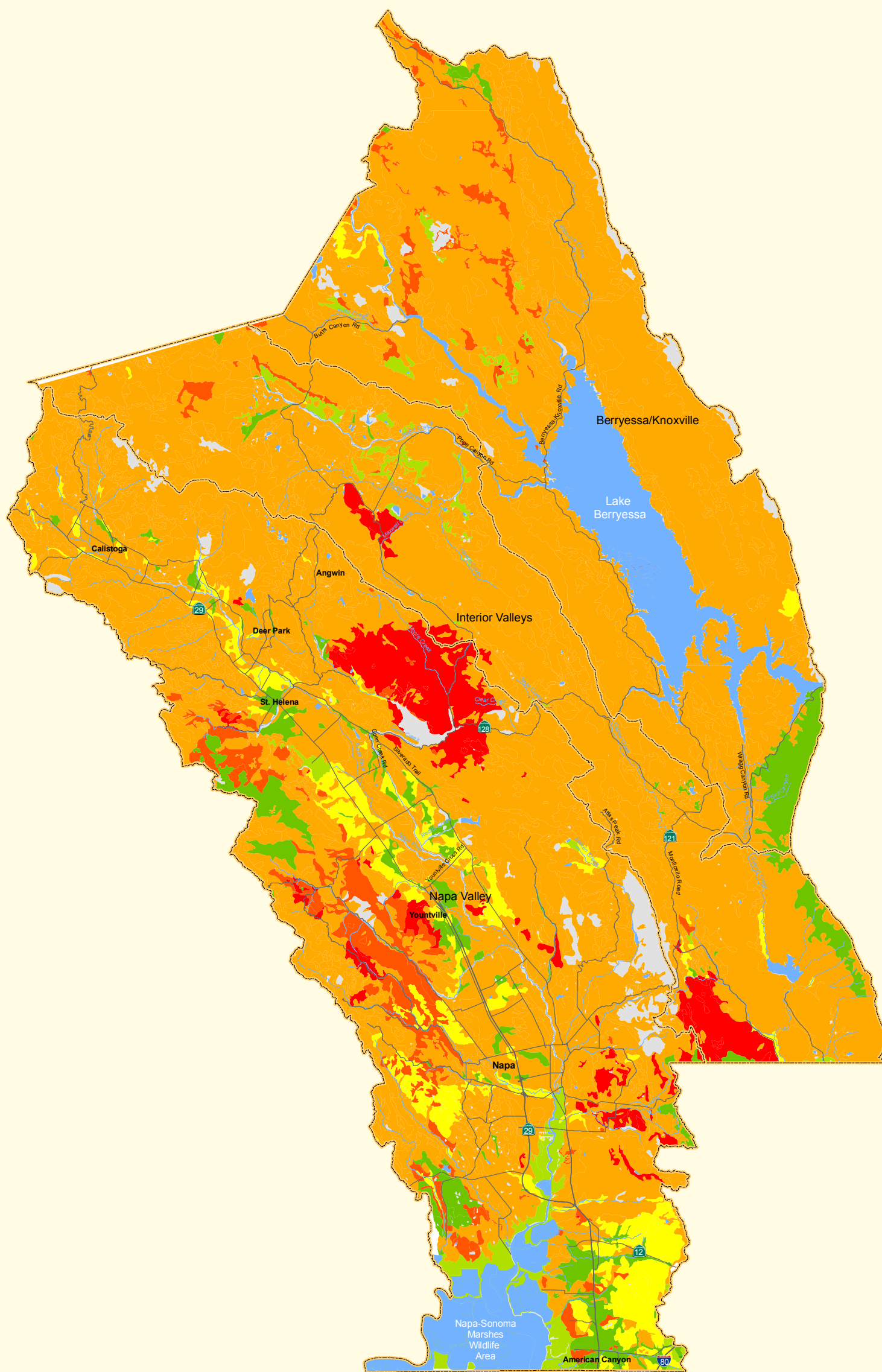




Napa County Baseline Data Report



LEGEND

Erosion Potential (K factor)	.37	Evaluation Areas
.20	.43	Lakes
.24	.49	Streams
.28	Unclassified	Major Roads
.32		

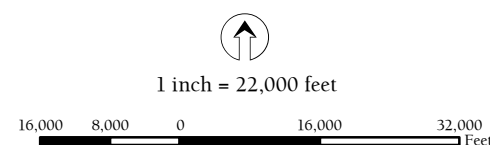
"Erosion factor Kf indicates the erodibility of the fine-earth fraction, or the material less than 2 millimetres in size." (NRCS, SSURGO 2004)

Multiple soil components can make up a soil map unit. Each component can have different Kf factors. This map displays the Kf values for the soil component with the highest percentage for each map unit.



Erosion K factor

Napa County



Horizontal Datum: NAD 83,
CA State Plane Coordinates, Zone II, feet
Source: Napa County, 2004; NRCS SSURGO 1999,
Jones & Stokes 2005

Disclaimer: This map was prepared for informational purposes only. No liability is assumed for the accuracy of the data delineated hereon.