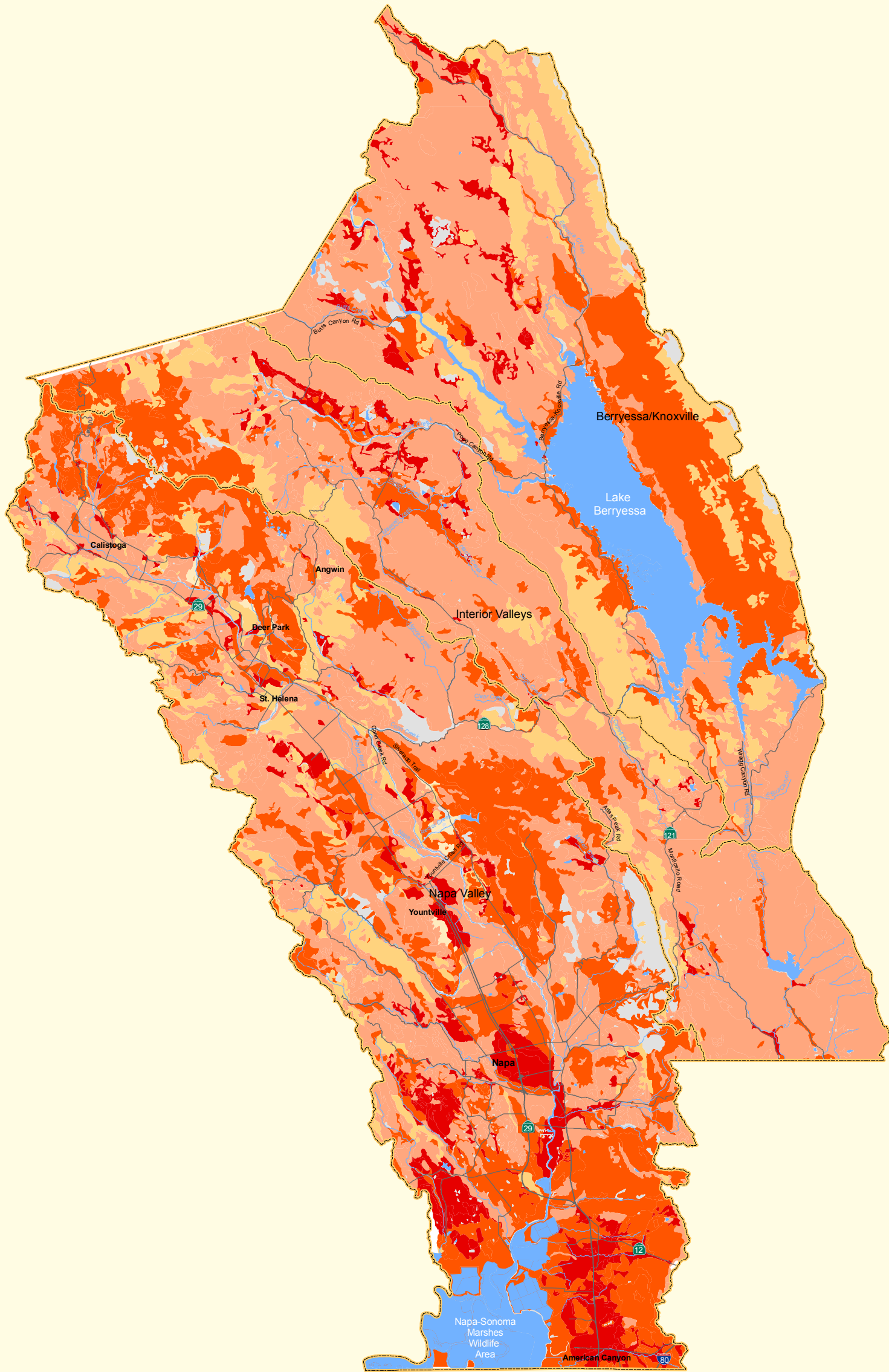




Napa County Baseline Data Report



LEGEND

- | | |
|----------------------|------------------|
| AASHTO Values | Evaluation Areas |
| A-1 | Lakes |
| A-2 | Streams |
| A-4 | Major Roads |
| A-6 | |
| A-7 | |
| Unclassified | |

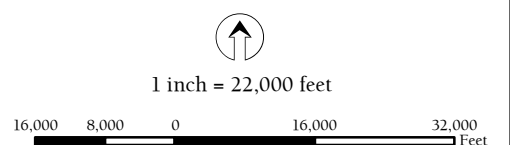
Jones & Stokes | EDAW

The AASHTO values reflect a synthesis of soil parameters, including: particle-size distribution of mineral soils less than 3 inches in diameter; liquid limit; and plasticity index. AASHTO values range from from A-1 to A-7. A-1 are coarse grained and A-7 are fine grained (NRCS, SSURGO 2004)

The individual components within a soil unit can have different AASHTO values. This map represents the first horizon of soil and a single component. The SSURGO database should be queried for specific locations and in some cases field studies will be required.

Engineering Properties AASHTO

Napa County



Horizontal Datum: NAD 83,
CA State Plane Coordinates, Zone II, feet
Source: Napa County, 2004; Jones & Stokes 2005
NRCS SSURGO 1999

Disclaimer: This map was prepared for informational purposes only. No liability is assumed for the accuracy of the data delineated hereon.