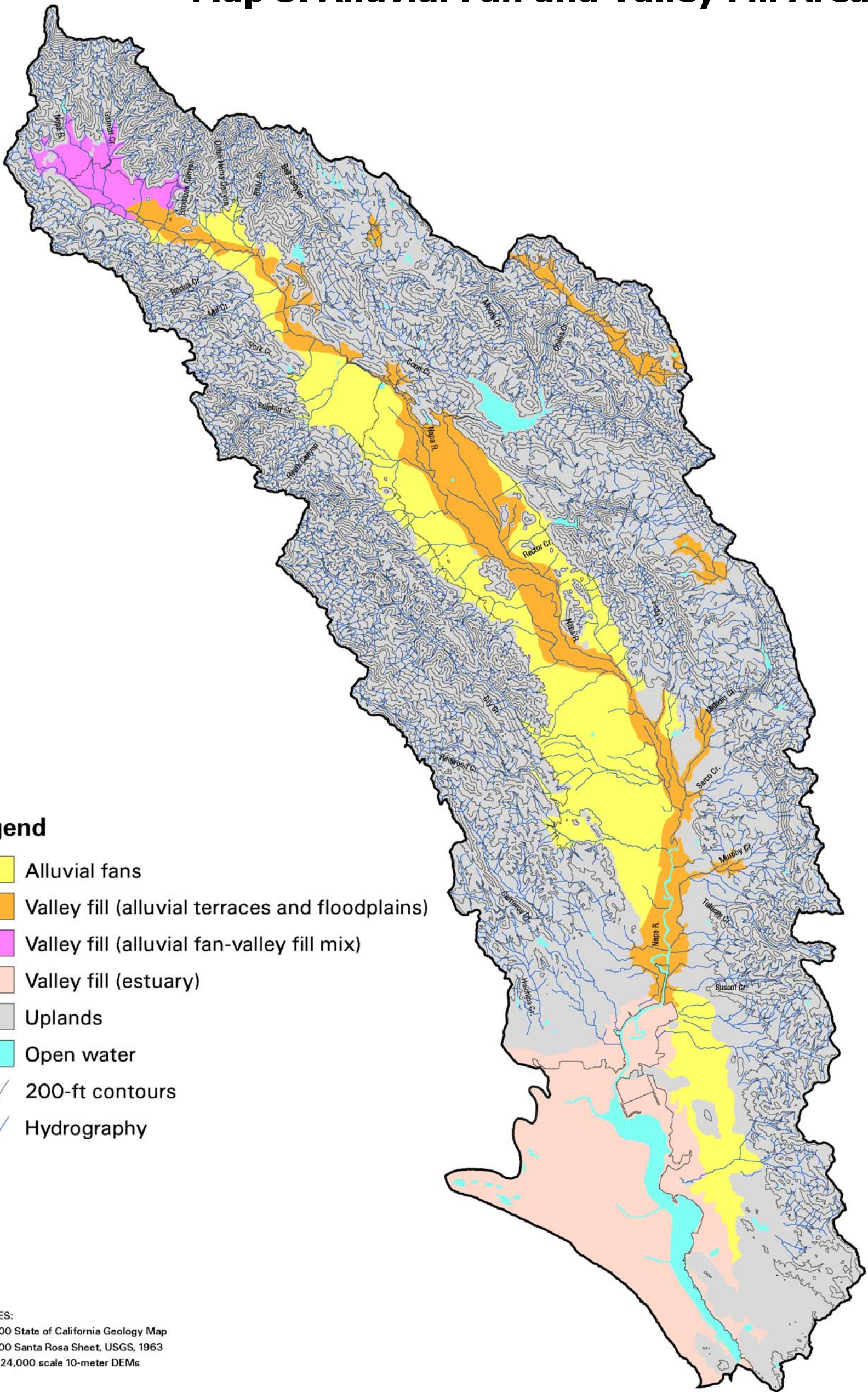


Napa River Basin, California

Map 5. Alluvial Fan and Valley Fill Areas



Legend

- Alluvial fans
- Valley fill (alluvial terraces and floodplains)
- Valley fill (alluvial fan-valley fill mix)
- Valley fill (estuary)
- Uplands
- Open water
- 200-ft contours
- Hydrography

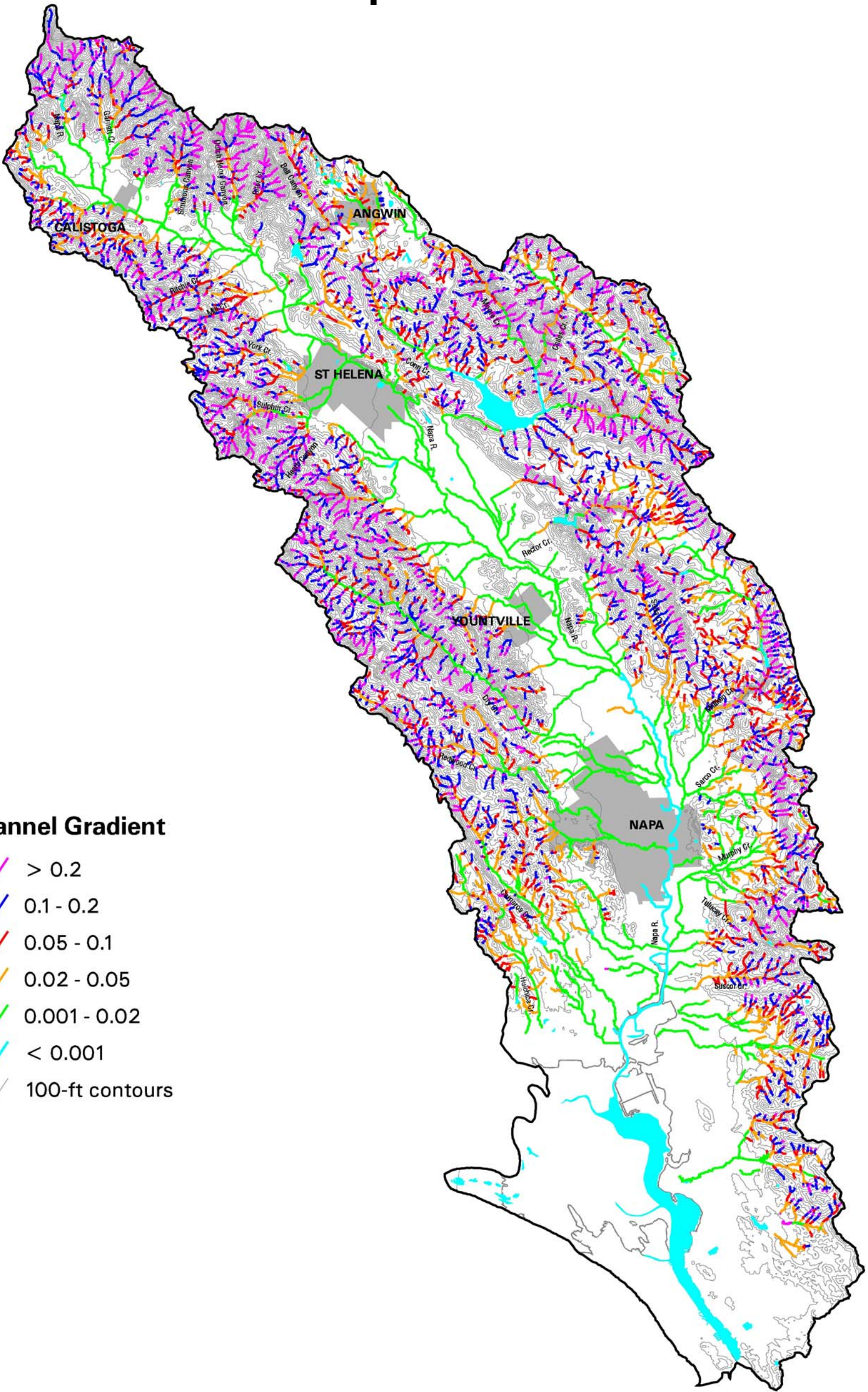
SOURCES:
 1:750,000 State of California Geology Map
 1:250,000 Santa Rosa Sheet, USGS, 1963
 USGS 1:24,000 scale 10-meter DEMs





0 mi 3 mi

Napa River Basin, California

Map 6. Stream Channel Gradient



Channel Gradient

-  > 0.2
-  0.1 - 0.2
-  0.05 - 0.1
-  0.02 - 0.05
-  0.001 - 0.02
-  < 0.001
-  100-ft contours



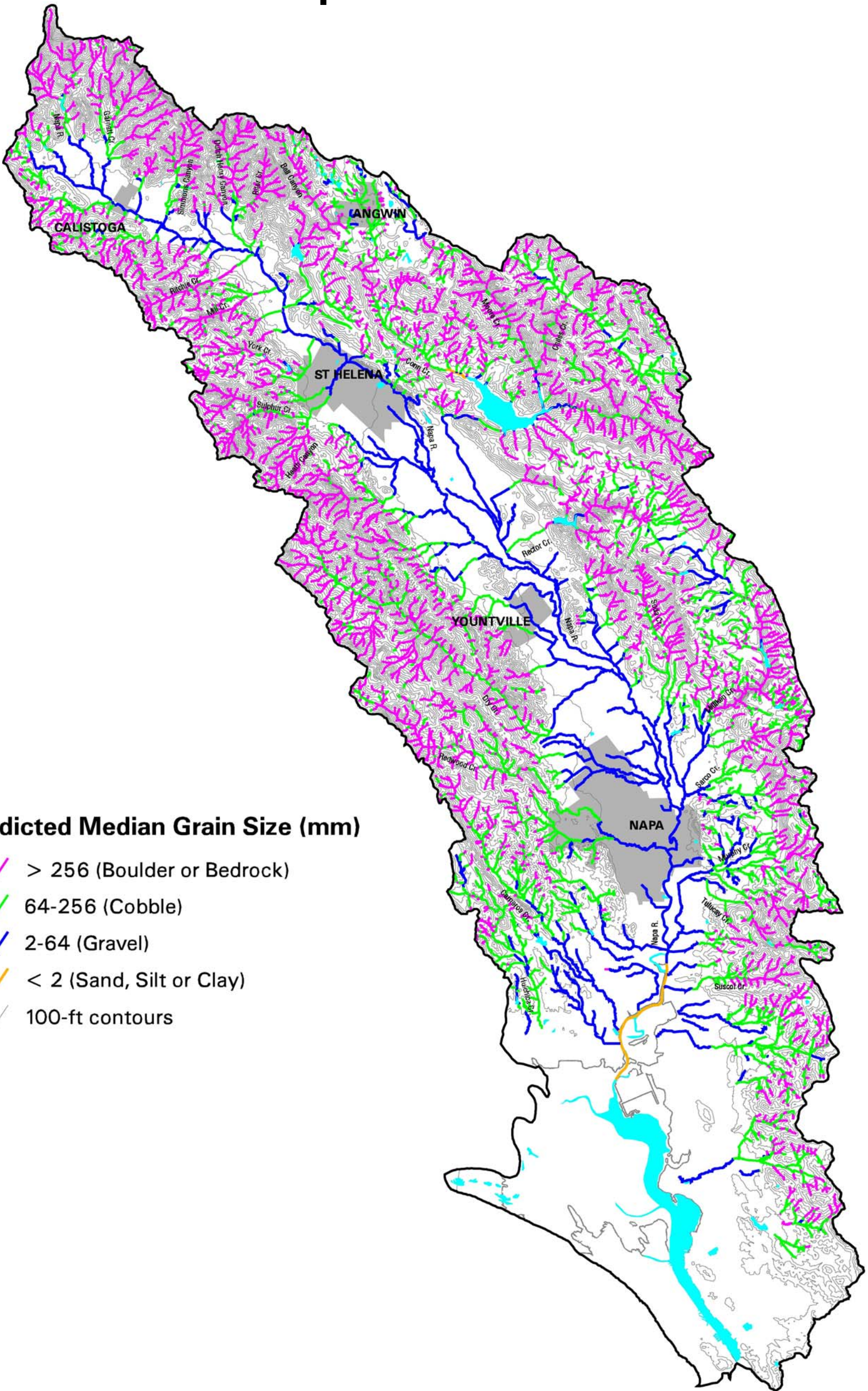
SOURCES:
 Stream network: USGS 1:24,000 DLG and
 UC Berkeley Department of Earth and Planetary Science
 Cities: County of Napa

0 mi 3 mi








Napa River Basin, California

Map 7. Predicted Median Grain Size



Predicted Median Grain Size (mm)

-  > 256 (Boulder or Bedrock)
-  64-256 (Cobble)
-  2-64 (Gravel)
-  < 2 (Sand, Silt or Clay)
-  100-ft contours



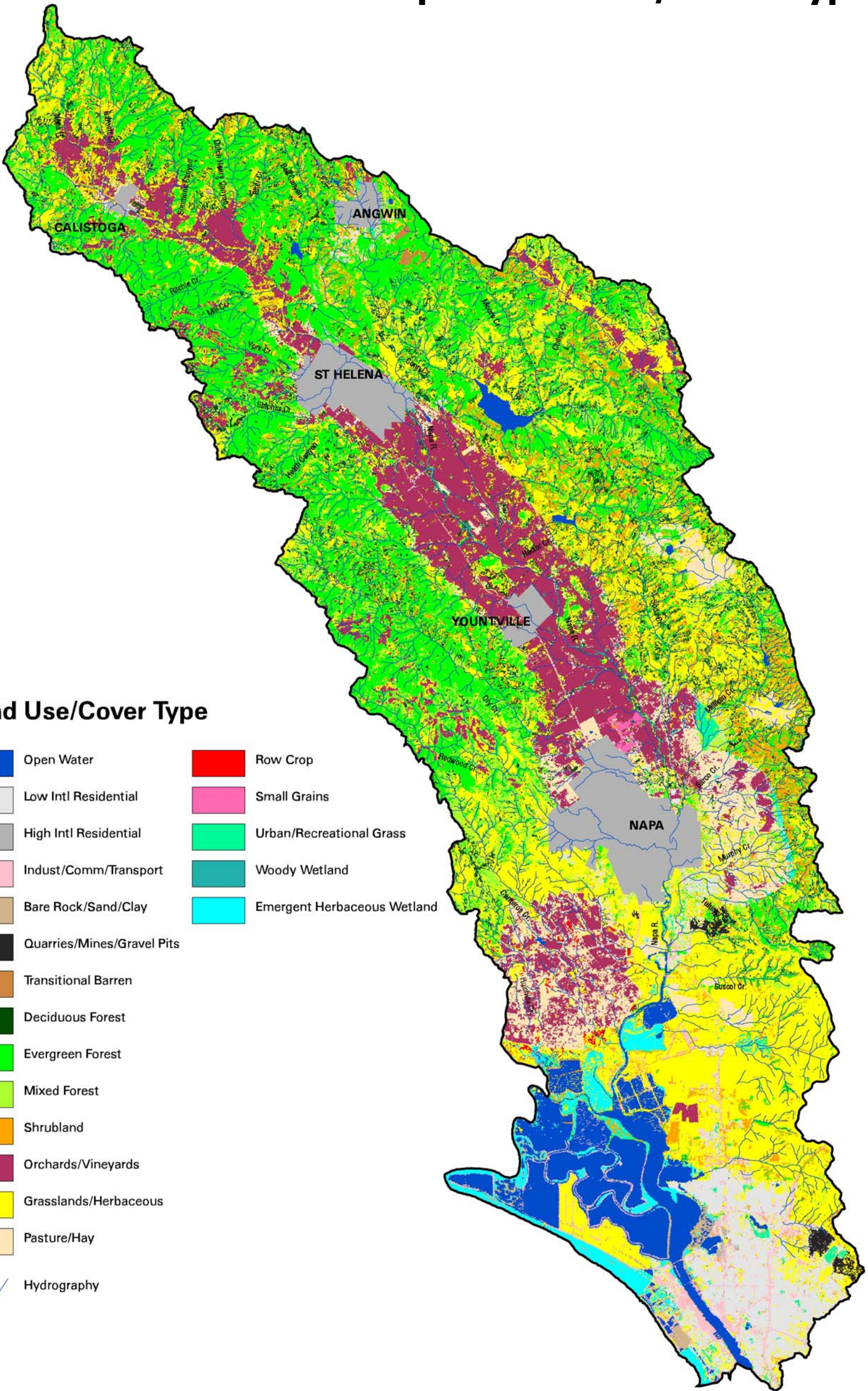
SOURCES:
 D50 Grain size prediction based on Napa-specific
 bankfull regression formula
 Cities: County of Napa

0 mi 3 mi



Napa River Basin, California

Map 8. Land Use/Cover Types



Land Use/Cover Type

- | | | | |
|---|----------------------------|---|-----------------------------|
|  | Open Water |  | Row Crop |
|  | Low Intl Residential |  | Small Grains |
|  | High Intl Residential |  | Urban/Recreational Grass |
|  | Indust/Comm/Transport |  | Woody Wetland |
|  | Bare Rock/Sand/Clay |  | Emergent Herbaceous Wetland |
|  | Quarries/Mines/Gravel Pits | | |
|  | Transitional Barren | | |
|  | Deciduous Forest | | |
|  | Evergreen Forest | | |
|  | Mixed Forest | | |
|  | Shrubland | | |
|  | Orchards/Vineyards | | |
|  | Grasslands/Herbaceous | | |
|  | Pasture/Hay | | |
|  | Hydrography | | |



SOURCES:
1999 USGS Land Cover Characterization Program,
resolved from 1992 Landsat imagery at 1:100,000 scale

0 mi 3 mi

