



Calistoga Fish Passage Projects

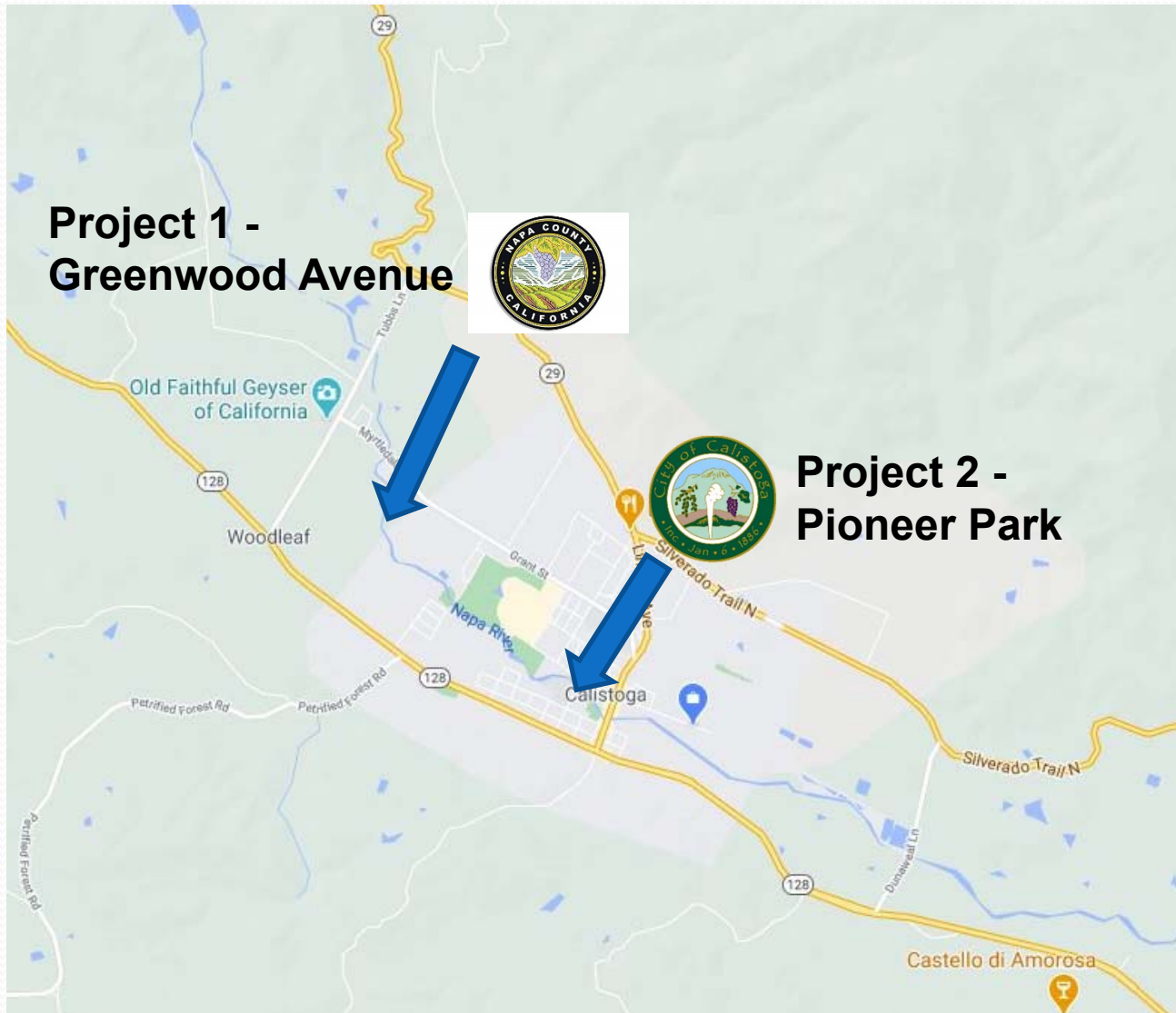


**City of Calistoga - Pioneer Park
Pedestrian Bridge and Fish Passage
and Barrier Removal Project**



**County of Napa – Greenwood
Bridge and Fish Passage and Barrier
Removal Project**

Location Map



Napa County Project Greenwood Culvert Replacement Project



Napa County Fish Barrier Removal

Construction Schedule 7 months
July 2015 thru Feb 2016

Pre project conditions - 2014



Post project 2016

Napa County Fish Barrier Removal



Post project - 2017

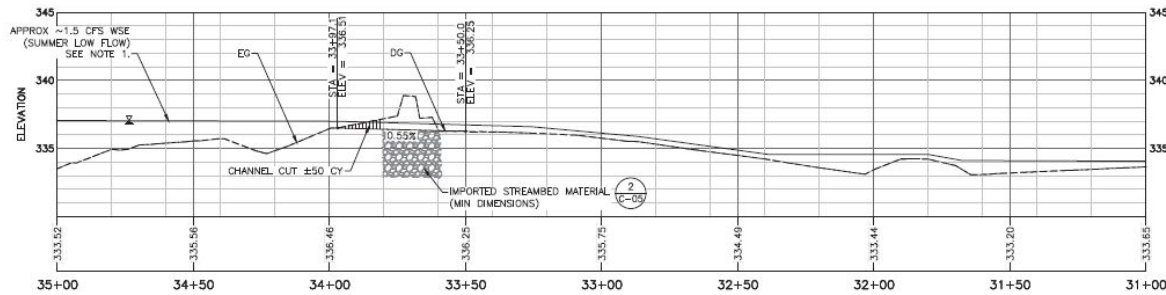
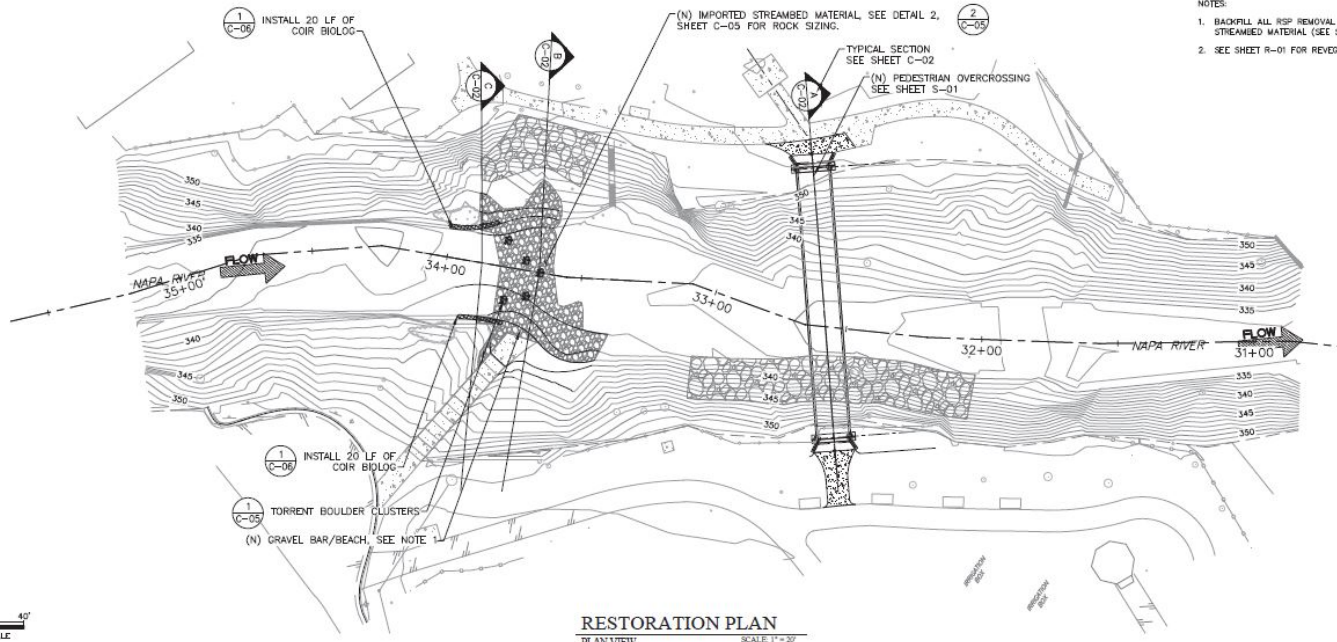
Total Cost \$2.8M

Post project - 2016



Pioneer Park Bridge and Low Water Crossing Removal

100% DESIGN



NOT FOR CONSTRUCTION PROFESSIONAL SEAL 74415 CIVIL STATE OF CALIFORNIA CONSTRUCTION	
CALISTOGA FISH PASSAGE IMPROVEMENT PROJECT PIONEER PARK RESTORATION PLAN	
PROJECT NAPA COUNTY RESOURCE CONSERVATION DISTRICT	SHEET NO. 8 OF 20
DRAWN BY AS: SHAWN	PROJECT NO. P1330420-00
CHECKED BY XX-XX	DATE 03/03/2018
NAPA COUNTY RCD 1303 JEFFERSON STREET SUITE 500 B NAPA, CA 94959	
SHEET NO. C-01	

FILE: P:\PROJECTS\1330420\1330420000.DWG - MARK RINES CALISTOGA FISH PASSAGE IMPROVEMENT PROJECT RESTORATION PLAN 0001
 LAST SAVE DATE: 03/18/2018 10:41 AM
 FILE: P:\PROJECTS\1330420\1330420000.DWG

NOTES:
1. WATER SURFACE ELEVATION IS SCHEMATIC AND WILL VARY. CONTRACTOR RESPONSIBLE OF ESTIMATING FLOW AND REMEDIATING. SEE SPECS.

Fish Passage Barrier Removal and Pioneer Park Bridge

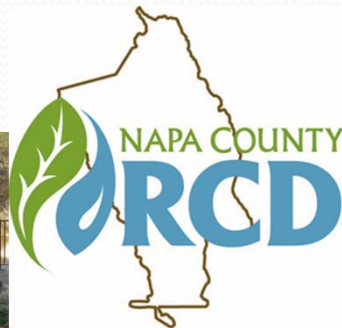


Pioneer Park Bridge Fish Barrier Removal



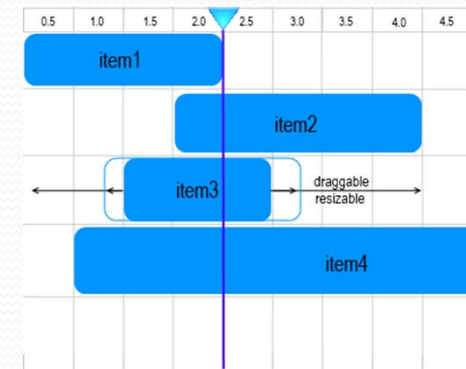
Benefits

- **Protect and restore important ecosystems – eliminate fish barriers (<4 miles of Napa River Habitat)**
- **Improved Road, Bike and Pedestrian Infrastructure**
- **Partner RCD and Interagency Coordination County/City**
- **Grant funding reduce community costs**



Challenges

- Time it takes (funding, permitting, design, construction)
- Costs (Grants no such thing as free money)
- Conflicting benefits (infiltration, habitat)
- Changes to floodplain impacts



Thank You

Derek Rayner, PE, QSD, Leed GA

