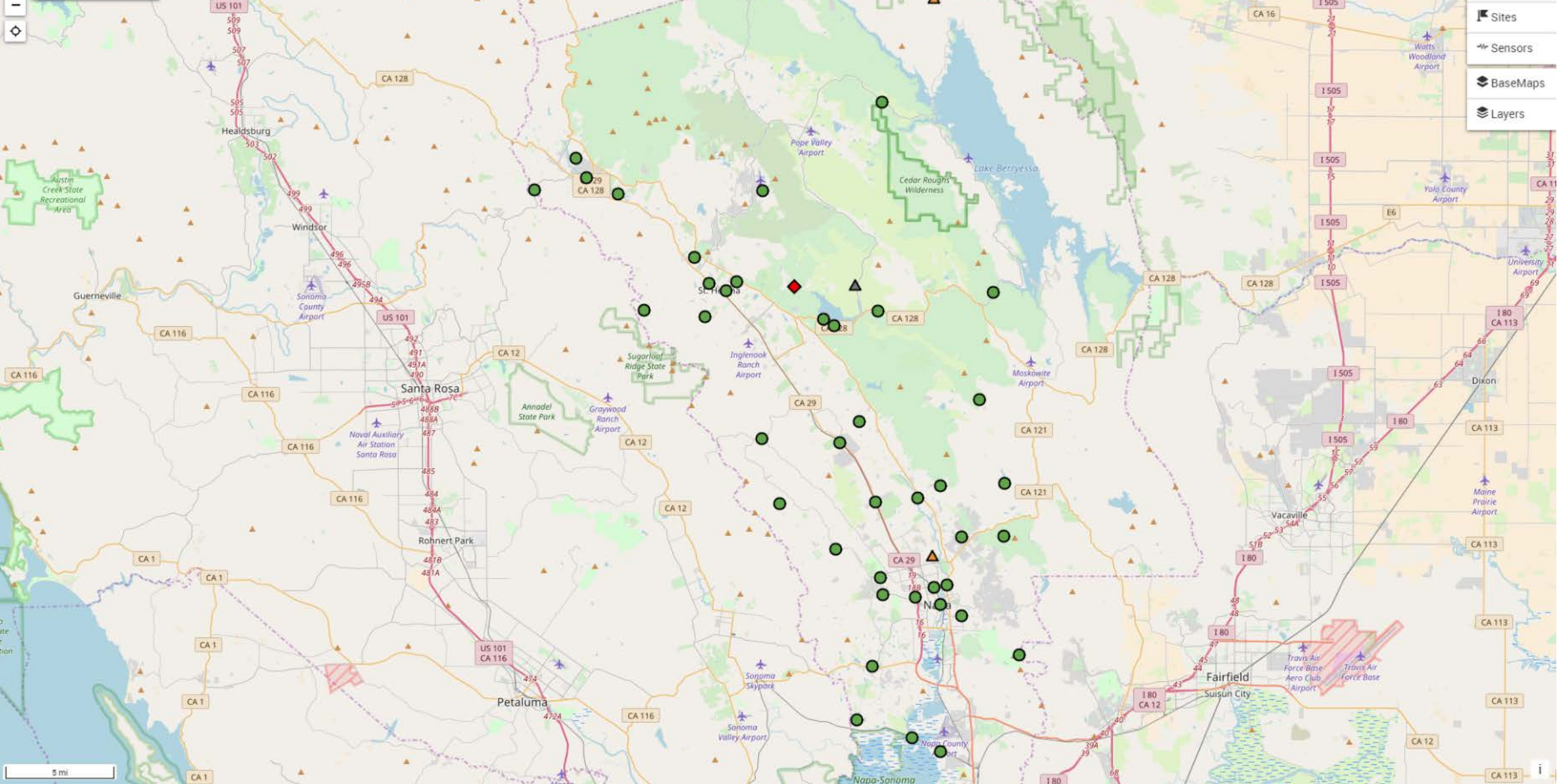


2018-12-12 11:58:40



- Views
- Sites
- Sensors
- BaseMaps
- Layers

5 mi

i



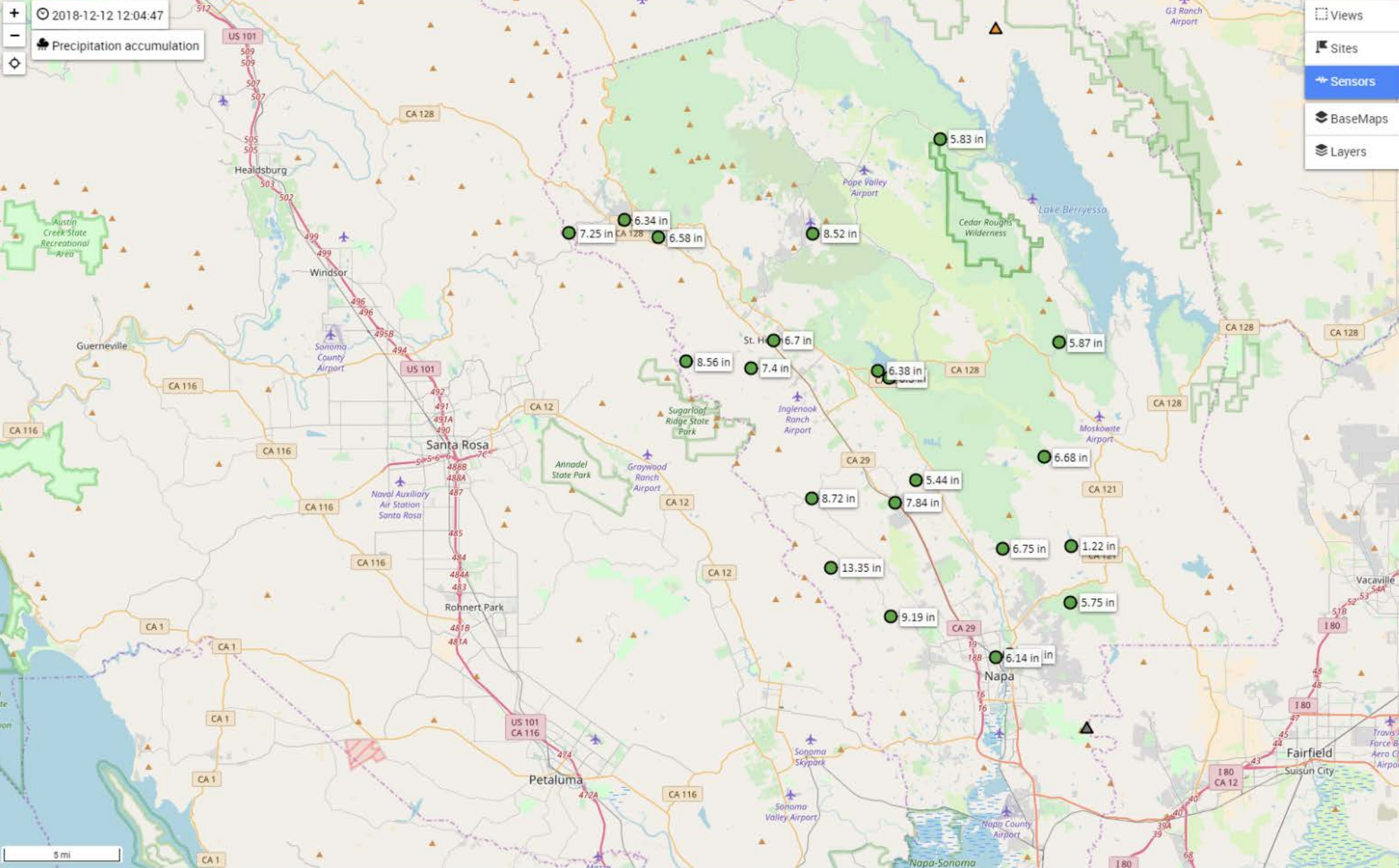






2018-12-12 12:04:47

Precipitation accumulation



Views

Sites

Sensors

BaseMaps

Layers

Sensor Type

Precipitation accumulation

Options

Thresholds

No

# Napa River at Dunaweal Ln (40142)

Reload

## Sensors

Grid List Like Filter

Battery voltage (8)	13.05 vdc	an hour ago
Precipitation accumulation (0)	6.58 in	an hour ago
Precipitation increment (0)	0.00 in	an hour ago
Stream Flow (7) Discharge	2.47 cfs	an hour ago
Water Level (7) Stage	1.04 ft	an hour ago

## Map



## Notes

RAIN AND STREAM FLOOD WARNING AND FLOW MONITORING STATION  
 Installed: 2009  
 Period of Record: October 2009 through present  
 Drainage Area: 19,524 acres (30.51 square miles)  
 Gage Datum: Approximate channel bottom

Stream flow data are real-time estimates, may include significant error, and are **provisional and subject to change**. Contact Napa County Resource Conservation District for more information.

## Images





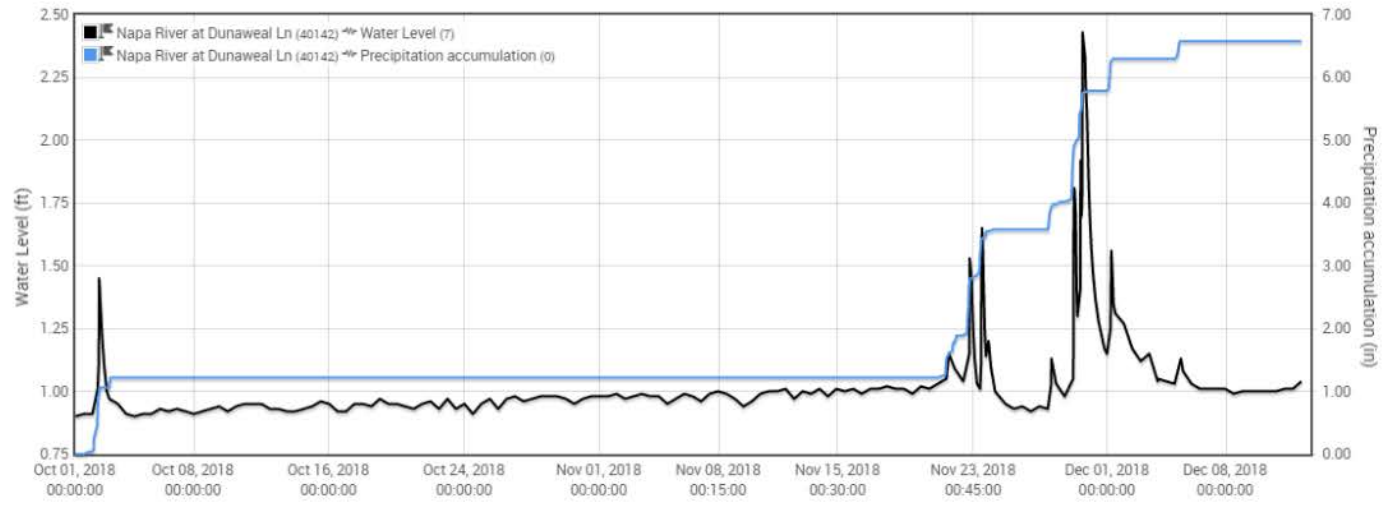
# Graph

Reload

01 October, 2018 - 12 December, 2018

Markers Legend Thresholds

Sensor Type Latency  
+ Add



**Napa River at Dunaweal Ln (40142) - Water Level (7)** On Thresholds  
1.04 ft an hour ago

**Napa River at Dunaweal Ln (40142) - Precipitation accumulation (0)** On Thresholds  
6.58 in an hour ago