

Watershed Information Center  
& Conservancy



# Watershed Information Center & Conservancy (WICC) Board of Napa County



A Tradition of Stewardship  
A Commitment to Service

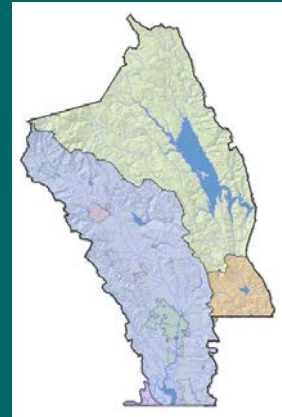
Joint GRAC-WICC Meeting  
July 26, 2012

[www.napawatersheds.org](http://www.napawatersheds.org)



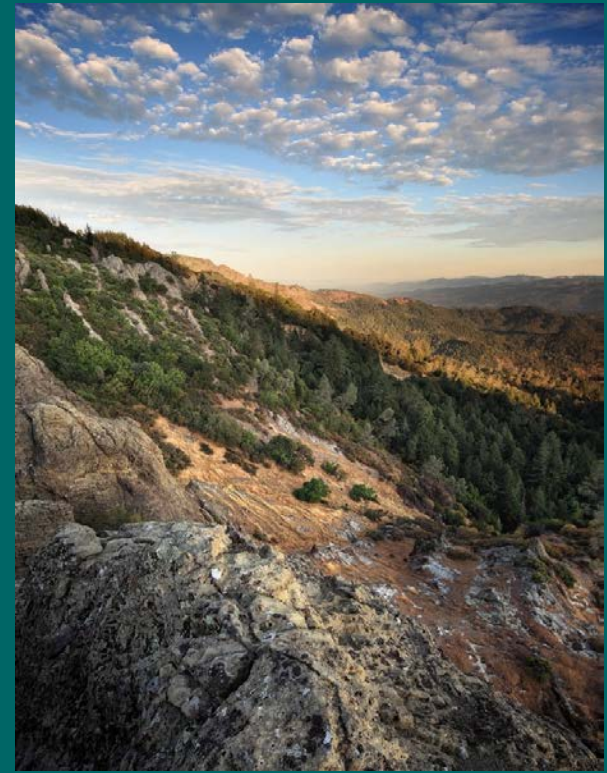
# WICC Overview

- ◆ Role & Responsibility
- ◆ Membership & Meetings
- ◆ Key Programs/Efforts
  - Education & Outreach
  - Policy Monitoring
  - Watershed Projects/Monitoring
  - Funding Opportunities
- ◆ Future Goals & Efforts



# Role & Responsibility

- ◆ WICC Board created in 2002
- ◆ Advisory committee to the Board of Supervisors
- ◆ Conduit for citizen input regarding watershed resources, and
- ◆ Supports data collection, analysis and monitoring efforts related to the health of our watersheds





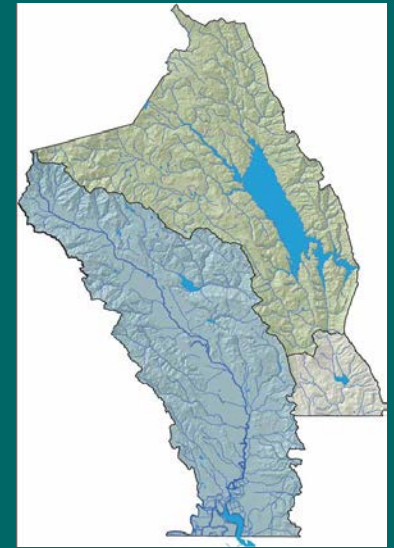
# Membership & Meetings

## ◆ WICC Membership

- Diverse community representation
- 17 members (originally 14)
  - ◆ Council Member from Cities/Towns
  - ◆ Board of Supervisors
  - ◆ Planning Commissioner
  - ◆ Land Trust/RCD/NRCS
  - ◆ Farming/Agriculture Industry
  - ◆ Environmental Interest Groups
  - ◆ Business/Wine Industry

## ◆ Meetings

- 4th Thursday alternate months



# Key WICC Programs

- ◆ Provide Education & Outreach
  - WICC WebCenter
  - Public Involvement/Events
- ◆ Monitor Federal, State & Regional Policies
  - Water Board, EPA & Other Agencies
- ◆ Support Watershed Projects
  - Monitoring & Assessment
  - Restoration & Conservation
  - Planning & Management
- ◆ Pursue Funding Opportunities
  - Partners & Grant Collaboration





# Education & Outreach

## WICC WebCenter: News, Events, Data, Maps & more...



home | about us | contact us | calendar | my subscription | subscribe to updates

Watershed Information Center & Conservancy  
of napa county

our watersheds | maps | reports & data | planning | watershed groups | projects

Google Custom Search



**welcome**

TO YOUR WICC COMMUNITY PORTAL,  
ESTABLISHED TO GUIDE AND SUPPORT  
COMMUNITY EFFORTS TO MAINTAIN AND  
IMPROVE THE HEALTH OF NAPA COUNTY'S  
WATERSHED LANDS.



FOR  
the public



FOR  
planners & experts



FOR  
stewardship groups



FOR  
kids & teachers

**event calendar**



**Public Workshop for the Bay Area Integrated Regional Water Management**

Jul 23, 2012 (4:00pm - 6:00pm)

[Keep reading...](#)

**Westside Sac IRWM Plan - Project Info**

Form Webcast

Jul 24, 2012 (10:00am - 1:00pm)

[Keep reading...](#)

**Map Layers**

- ☐ Major Streams
- ☐ Faults
- ☒ **Geology**
  - Artificial fill (historic)
  - Clear Lake Volcanics (Pleistocene-Pliocene)
  - Sonoma Volcanics (Pliocene-Miocene)
  - Other Pleistocene - Pliocene Units (QT)
  - Franciscan Complex (Cretaceous-Jurassic)
  - Great Valley Complex (Cretaceous-Jurassic)
  - Early Tertiary Assemblages
  - Late Tertiary Assemblages
  - Late Tertiary Assemblages
- ☐ Soil Texture
- ☐ Watersheds
- ☒ **Napa County**



Map | Satellite | Hybrid

**Event: Joint WICC Board & Groundwater Resources Advisory Committee Mtg.**

**Date:** Thu, Jul 26th 2012, 4:00pm - 5:30pm

**Location:** Yountville Community Center 6516 Washington St., Yountville, CA

**Description:**

Joint Special Meeting of the WICC Board and the Napa County Groundwater Resources Advisory Committee (GRAC) and the Napa County Watershed Information Center and Center (WICC) to share updates and discuss their respective work programs.

[WICC Board Agenda Packet 07.26.12 \(2.0 MB\)](#)

[Add to my calendar](#)

[www.napawatersheds.org](http://www.napawatersheds.org)

**AGENDA**

**JOINT GRAC-WICC SPECIAL MEETING**

Thursday, July 26, 2012, 4:00 - 5:30 pm

Location: Yountville Community Center, 6516 Washington St., Yountville, CA

**Meeting Objectives:**

- Provide an opportunity for the Napa County Groundwater Resources Advisory Committee (GRAC) and the Napa County Watershed Information Center and Center (WICC) to share updates and discuss their respective work programs.
- Discuss opportunities for collaboration between the WICC and the GRAC on community outreach efforts regarding the Napa County Groundwater Monitoring Plan.

TIME	AGENDA ITEM	PRESENTERS
4:00 pm	Call to Order and Roll Call Welcome & Introductions	Tucker Coffin, Vice-Chair, GRAC Michael King, Chair, WICC
4:10 pm	Update on WICC Activities <ul style="list-style-type: none"> <li>Overview of WICC Program</li> <li>Education &amp; Outreach Efforts</li> <li>Questions and Discussion</li> </ul>	Patrick Lowe, Natural Resources Conservation Program Manager Public Works/Forest Jeff Sharp, Principal Watershed Resources Planner Public Works/Forest
4:25 pm	Update on GRAC Activities <ul style="list-style-type: none"> <li>Overview of GRAC Purpose and Work Plan</li> <li>Update on Groundwater (GW) Scope of Work and draft GW Monitoring Plan Goals/Objectives/Priorities</li> <li>Next Steps...</li> <li>Questions and Discussion</li> </ul>	Hillary Gilmurray, Director Napa County F&E Vicki Westinghouse, Litch Lynch & Son, Consulting Engineers Patrick Lowe, Natural Resources Conservation Program Manager Public Works/Forest

# Education & Outreach

- ◆ Bi-Annual Watershed Symposium
- ◆ Hosting Public Meetings/Forums
  - WICC, Issue/Tech Forums, Project Mtgs
- ◆ Participation in Events
  - Earth Day, River Fest, others
- ◆ Public Speaking
  - Class Rooms, Organizations, Groups





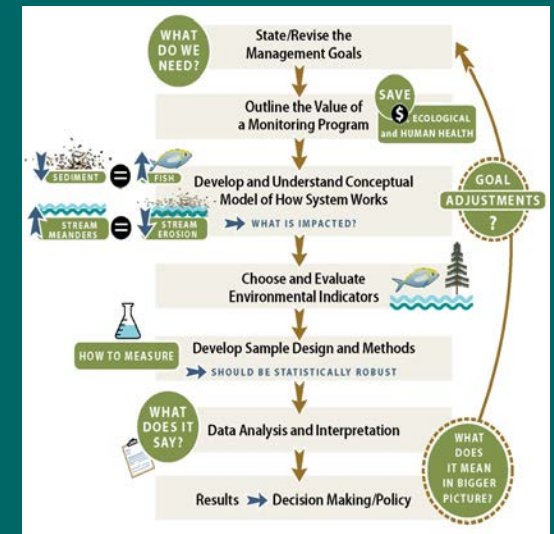
# Policy Monitoring

- ◆ State & Regional Water Boards
- ◆ California/Federal EPA
- ◆ Legislative actions/bills
- ◆ Policy workgroup involvement
- ◆ Attendance at key meetings
- ◆ Updates to Boards, staff & public



# Watershed Monitoring & Program Development

- ◆ Supported habitat & fisheries assessments countywide (2003-Present)
- ◆ Developed monitoring strategy (2005)
- ◆ Identified/prioritized watersheds (2007)
- ◆ Developed watershed goals & monitoring indicators (2009)
- ◆ Developed/applied EPA's Watershed Assessment Framework (2010)



# Focus on Fisheries

Key indicator  
of watershed health

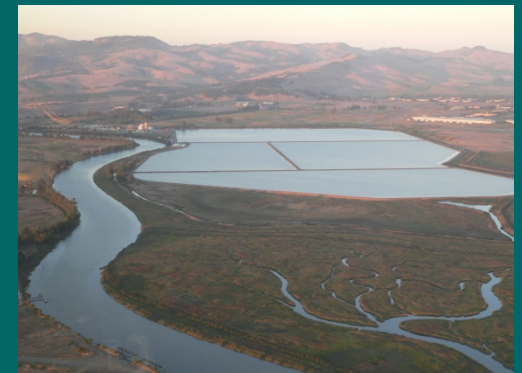


- ◆ Stream surveys & habitat assessments
- ◆ Barrier assessment & prioritization
- ◆ Salmon redd & carcass counts
- ◆ DNA testing
- ◆ Out migration monitoring



# Project Support

- ◆ Funding & Grant Support
  - Announcements, letters, partnerships, cost-share, coordination
- ◆ Building Capacity & Coordination
  - Promotion & outreach
  - Implementation & collaboration
  - Reporting & dissemination
- ◆ Example Projects





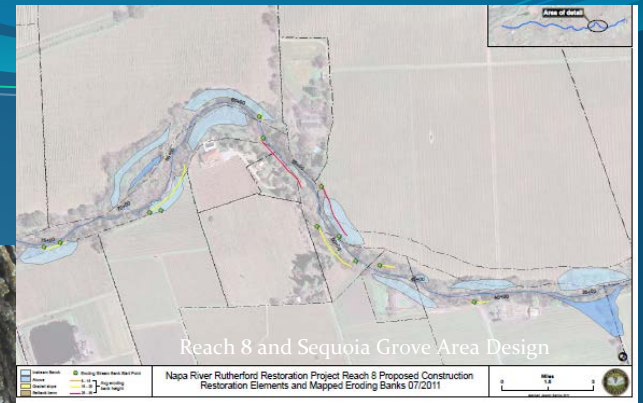
# Napa River Outmigration Monitoring

## Rotary Screw Trap





# Rutherford Reach (RDRT)

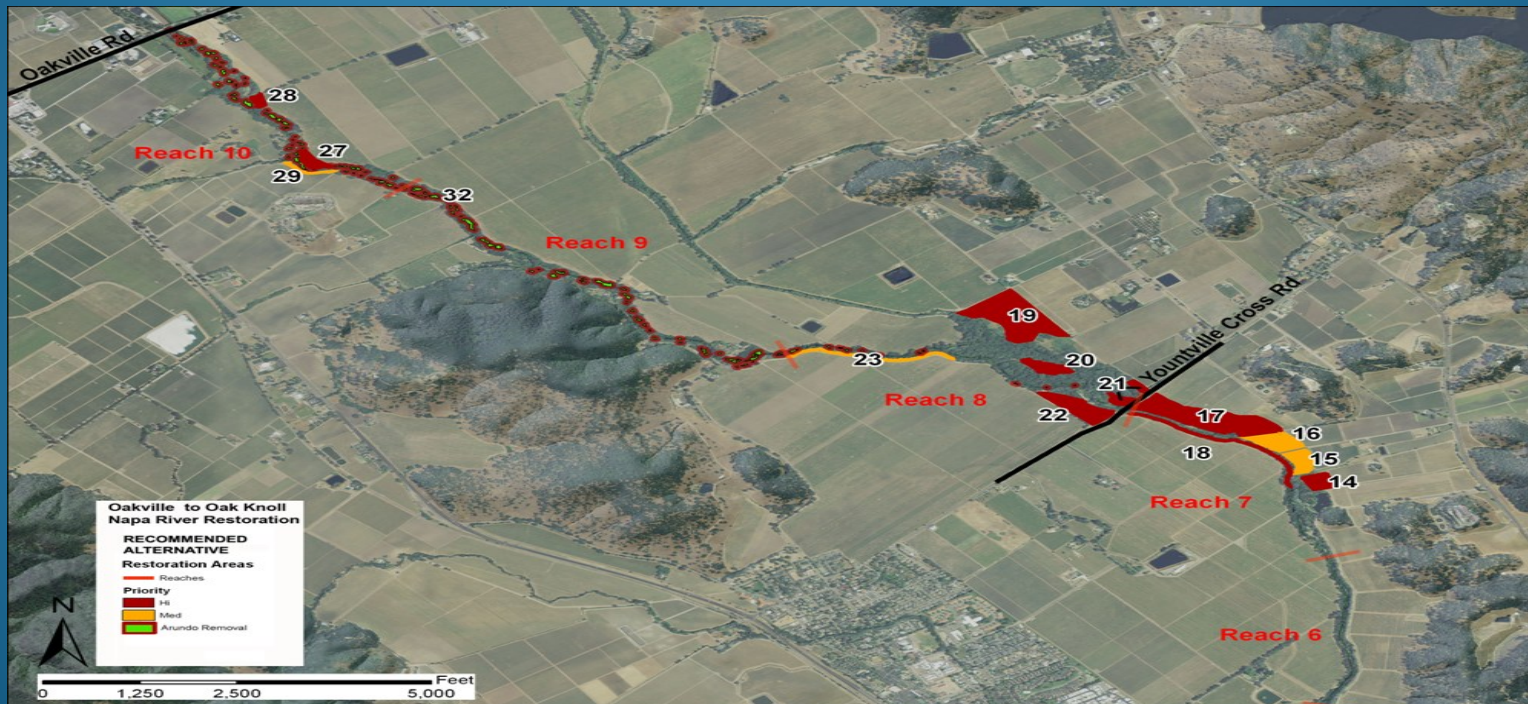




# Napa River Restoration Project

## Oakville to Oak Knoll Reach

- Conceptual Plan completed and landowner kickoff held early 2011
- Received EPA grant to support Phase 1 design (\$395,000)
- Consultant selected for CEQA Review
- First phase of project will involve *Arundo* removal





# Zinfandel Bridge Fish Passage Improvement Project

- Construction completed in October 2011
- Supported by a grant from the Coastal Conservancy (\$400,000)
- Now provides unrestricted fish passage to over 20 miles of upstream river spawning habitat and over 60 miles of upstream tributary spawning habitat





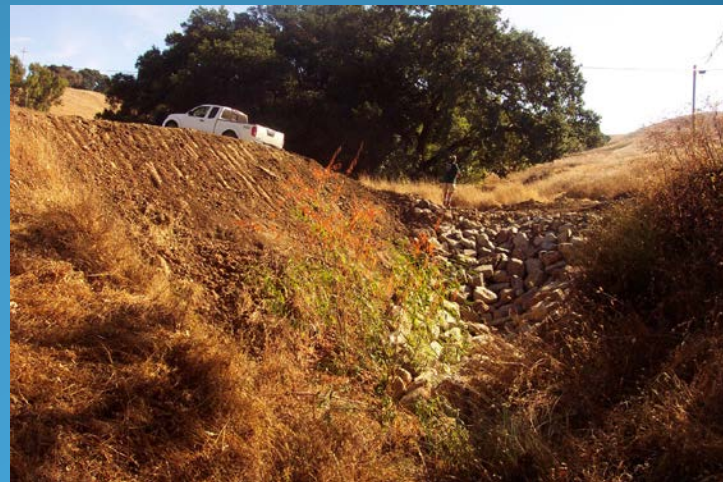


A Tradition of Stewardship  
A Commitment to Service



# TMDL Implementation: Reducing sediment delivery to Napa River by improving rural roads

- Erosion sources prioritized in Sulphur and Carneros Creek watersheds with Stewardship Groups in 2004
- Priority sites treated in both watersheds between 2009 and 2011
- Episodic and chronic erosion sources addressed
- 11.2 miles of rural roads storm-proofed (half of priority mileage)



Replacing culverts and armoring stream crossings reduces *episodic erosion*





A Tradition of Stewardship  
A Commitment to Service

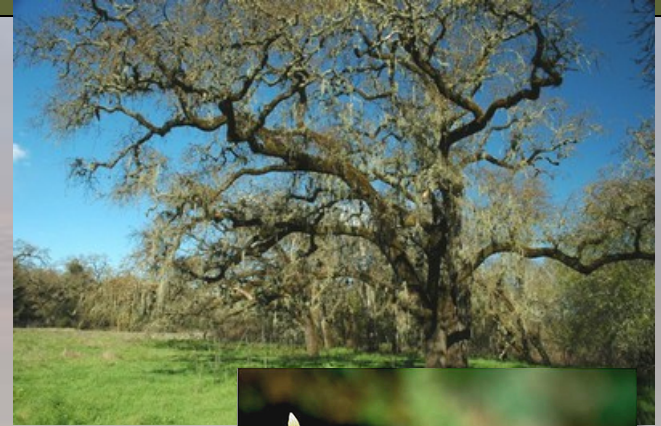
Napa Valley

# Historical Ecology

## Historical Ecology &

### “Re-Oaking of the Valleys”....

- Look for opportunities to reintroduce oaks into our existing landscapes (parks and trails, streetscapes, landscaping, projects, & others)
- Public Outreach, grant assistance, and other steps to begin the journey.....





What's Next for.....

# *Napa County Watersheds*

- Support for watershed projects, assessments & monitoring
- On-going monitoring of water & watershed policies
- Build partnerships for effective communication & coordination
- Seek funding in support of the mission of the WICC and directive of the Board







## For Additional Information go to the WICC Website

Patrick Lowe  
707-259-5937  
[patrick.lowe@countyofnapa.org](mailto:patrick.lowe@countyofnapa.org)

Jeff Sharp  
707-259-5936  
[jeff.sharp@countyofnapa.org](mailto:jeff.sharp@countyofnapa.org)



A Tradition of Stewardship  
A Commitment to Service

home | about us | contact us | calendar | login

**WICC** Watershed Information Center & Conservancy  
of napa county

our watersheds | maps | reports & data | planning | watershed groups

Google Custom Search Search

characteristics  
major basins  
caring for  
history  
education

**welcome**  
TO YOUR WICC COMMUNITY PORTAL,  
ESTABLISHED TO GUIDE AND SUPPORT  
COMMUNITY EFFORTS TO MAINTAIN AND  
IMPROVE THE HEALTH OF NAPA COUNTY'S  
WATERSHED LANDS.

**event calendar**

**Growing Even Greener: Eco Wine-growing Symposium «**  
Sep 4, 2009 (all day)  
Gain inspiring and useful information about  
green trends; innovations, on saving money  
while being more green, increasing quality and market advantage  
through sustainable, organic, biodynamic practices.

Sponsored by:  
Mendocino Winegrape Wine Commission  
California Sustainable  
Winegrowers Alliance  
UC Cooperative Extension

FOR the public  
FOR planners & experts  
FOR stewardship groups  
FOR kids & teachers

[www.napawatersheds.org](http://www.napawatersheds.org)