



AMERICAN CANYON'S RESILIENT WATERSHEDS

COLLABORATIVE APPROACHES TO RESTORATION AND
CLIMATE ADAPTATION





OVERVIEW

American Canyon's Resilient Watersheds

WETLANDS RESTORATION

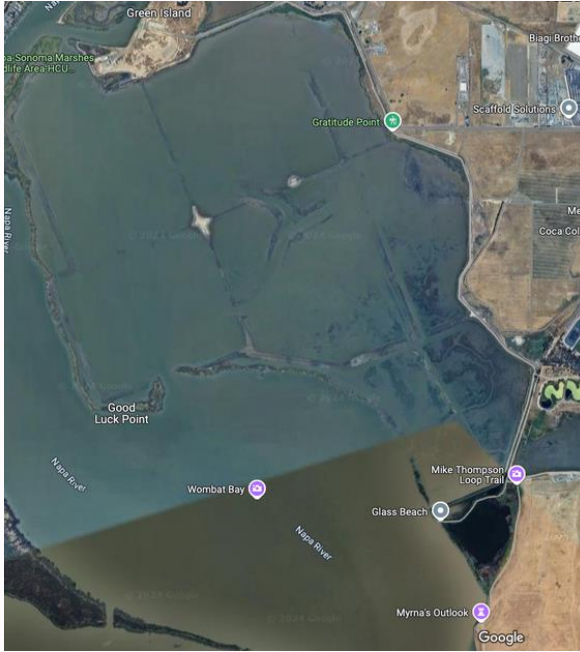
- Historical uses
- Previous and current restoration efforts
- City of American Canyon's Wetlands Restoration Plan

CLIMATE CHANGE RESILIENCY

- Protecting Critical Infrastructure
- Sea Level Rise Adaptation
- Restoration and Stewardship Efforts

PUBLIC ACCESS AND EDUCATION

- New Kayak Launch Facilities
- Expansion of public trails
- New parking and passive recreation areas
- Napa River Ecology Center



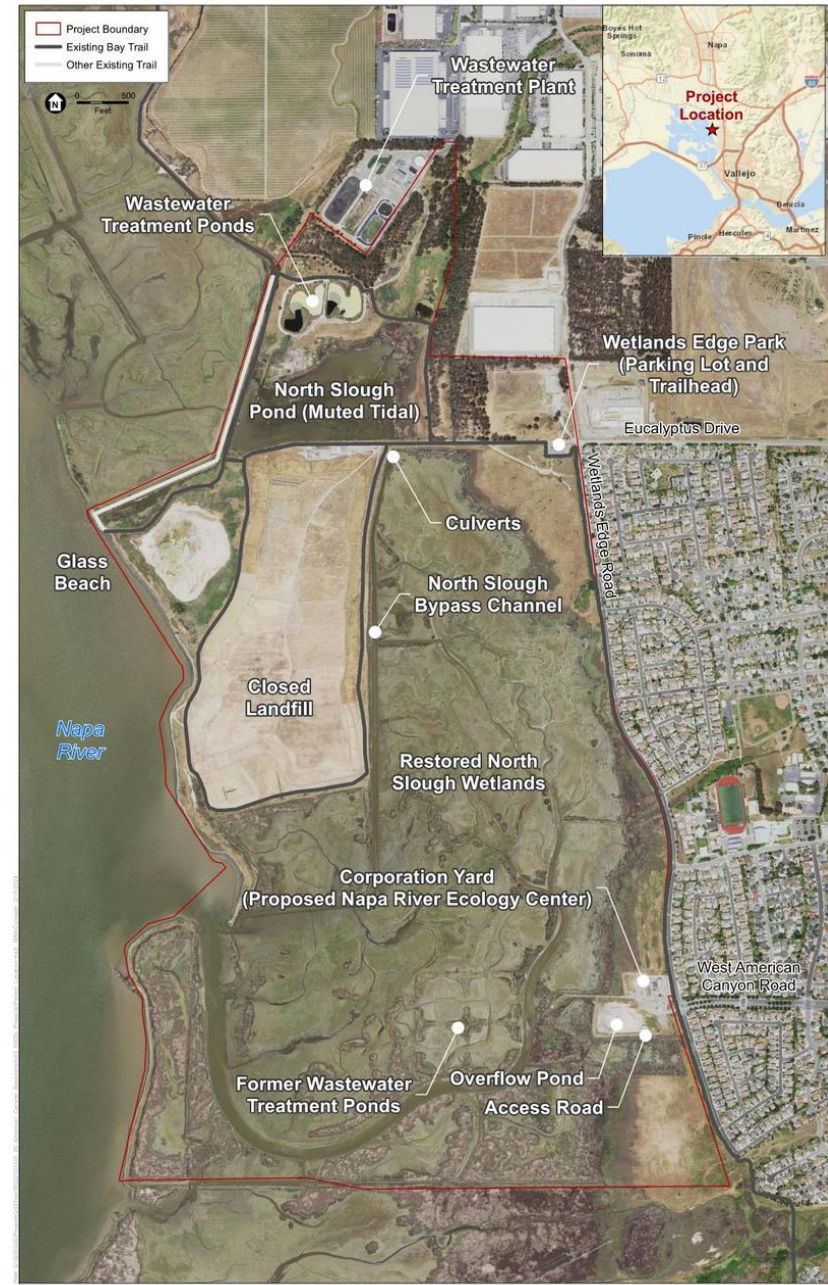
Napa River Wetlands Previous Uses & Restoration Efforts

- Ranching and Farming
- Cargill Salt Ponds
- Wastewater Treatment Ponds
- Municipal Landfill

Wetlands Restoration Plan

Provides conceptual level design for public access and ecological restoration at the American Canyon Wetlands.

- Increases public access
- Improves sea level rise resiliency
- Enhances wetlands habitat
- Provides new public recreation facilities
- Funded by Measure AA & approved in May 2024



SOURCE: ESA, 2023

American Canyon Wetland Restoration Project

Figure 1
Project Location and Existing Conditions

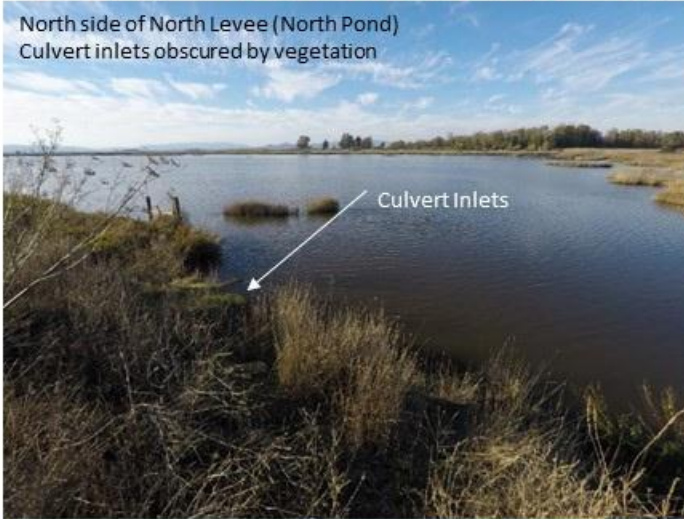


Proposed trail and levy improvements along the North Slough



North Pond Culverts ~3.5ft Dia CMP & ~3.5ft Dia. Concrete Pipe

North side of North Levee (North Pond)
Culvert inlets obscured by vegetation



South side of North Levee at medium tide
One culvert visible, one culvert fully submerged



North side of North Levee (North Pond)
Low Tide



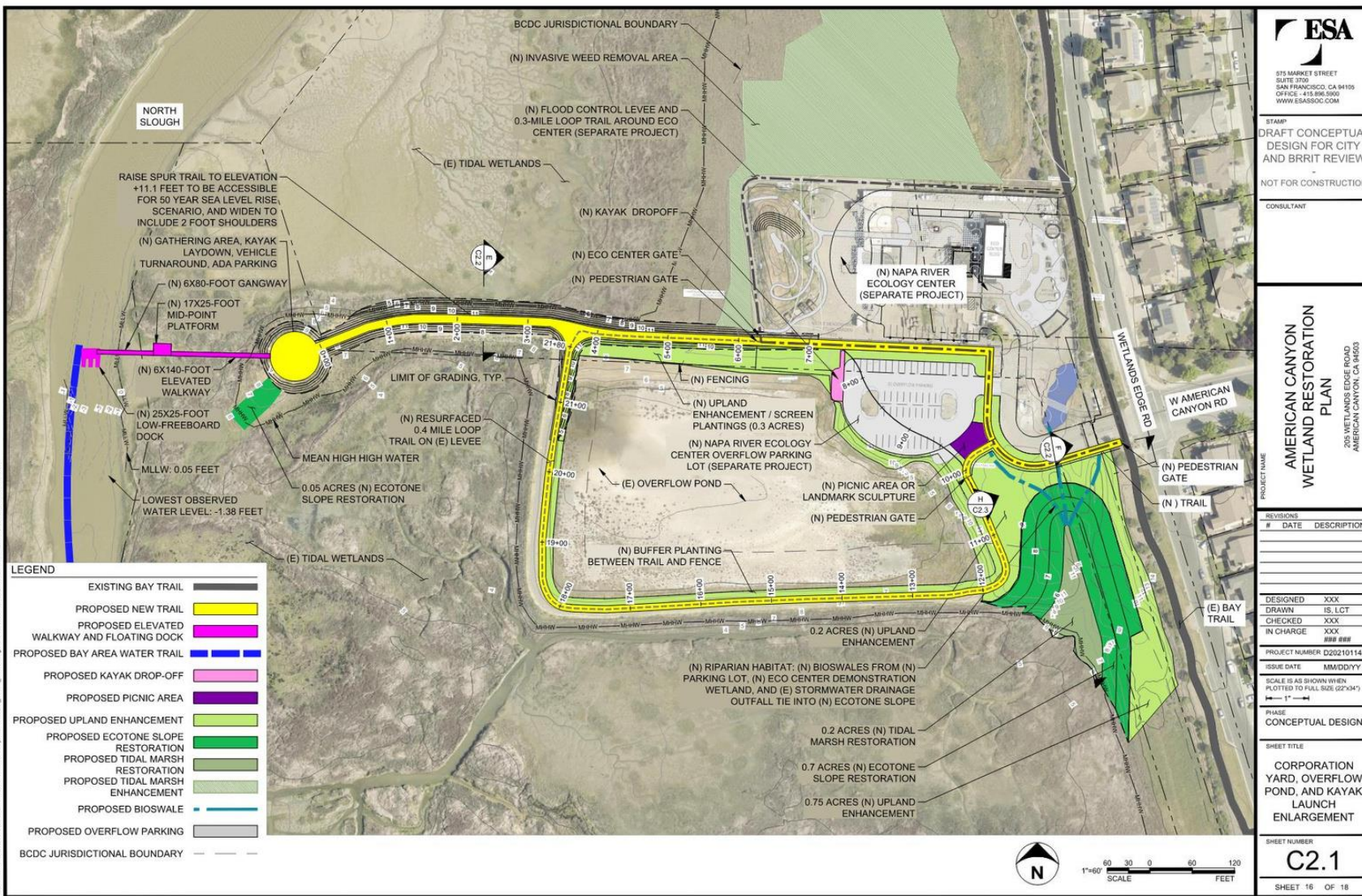
North Slough Culvert Restoration

Replaces the undersized culverts where North Slough crosses the Bay Trail with a larger box culvert. Benefits include:

- Enhances 41 acres of tidal marsh and bay flat (North Slough Pond) habitat by restoring full tidal exchange
- Provides fish passage for NMFS protected species like Central California Coast steelhead and North American green sturgeon southern DPS

Additional Restoration Plan Benefits

- Re-establishes 0.2 acres of tidal marsh and 0.75 acres of transitional ecotone habitat at the Corporation Yard
- Enhances 18+ acres of transitional ecotone habitat with native planting and weed management



Proposed Kayak Launch location in American Canyon



Protecting Critical Infrastructure & Improving Sea Level Rise Resiliency

**Corporation
Yard Relocation**

**Protecting Essential
Services (Pump House)
Building**

**Raising Levy
Trails**

**Replacing North
Slough Culvert**

**Managing
Stormwater**

**Restoring
Wetlands**



Community Engagement

Public Access and Recreation

- Improve public safety and accessibility along the Bay Trail and North Slough
- Build a kayak launch, 0.5 miles of new public access trails, shared parking, and restrooms next to the Ecology Center

Watershed Education

- Watershed Explorers and Environmental Education programs serve elementary and middle school students
- Community and Student Conservation efforts
- Napa River Ecology Center



Restoration and Stewardship Efforts

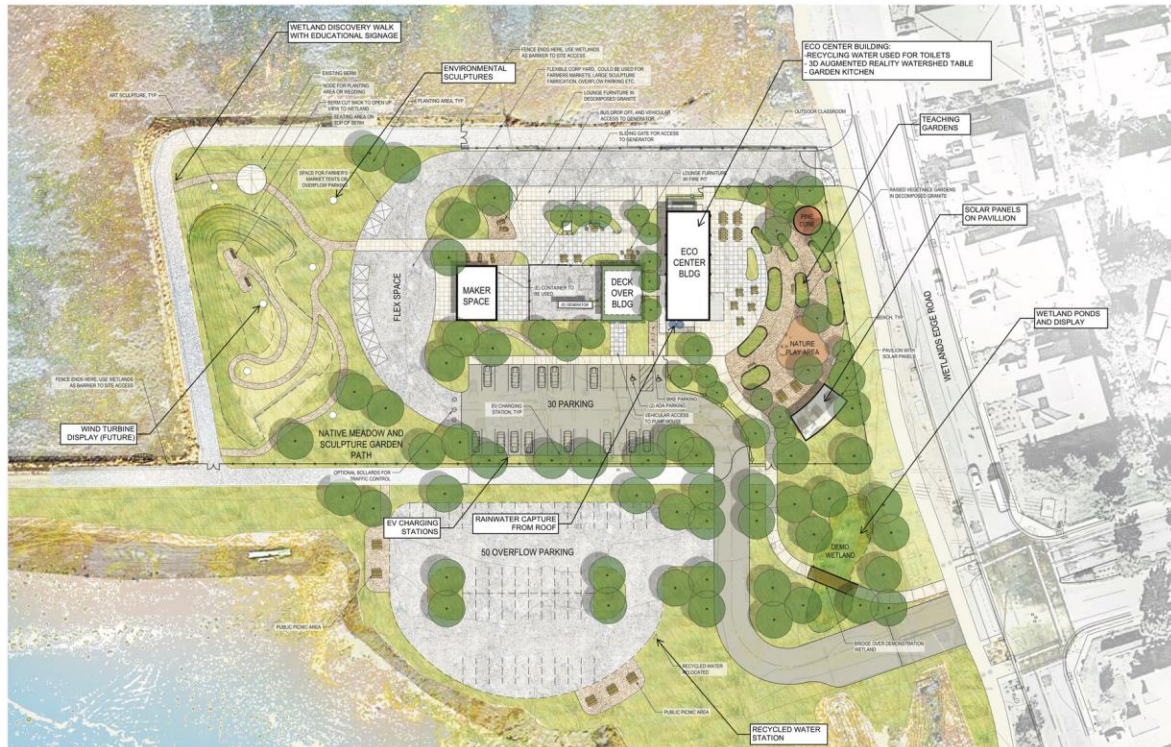
Getting Community Involved to Protect the Wetlands

- Parks and Recreation Volunteer Days
- Parks Foundation Teen WILD Program
- Conservation Partners
- Watershed Protectors
- Management of Invasives and Native Replanting





NAPA RIVER ECOLOGY CENTER



RIM rhaa

WETLANDS ECO CENTER FOR AMERICAN CANYON COMMUNITY AND PARKS FOUNDATION 216075
Green Elements



05/20/22 P104



THANK YOU & QUESTIONS