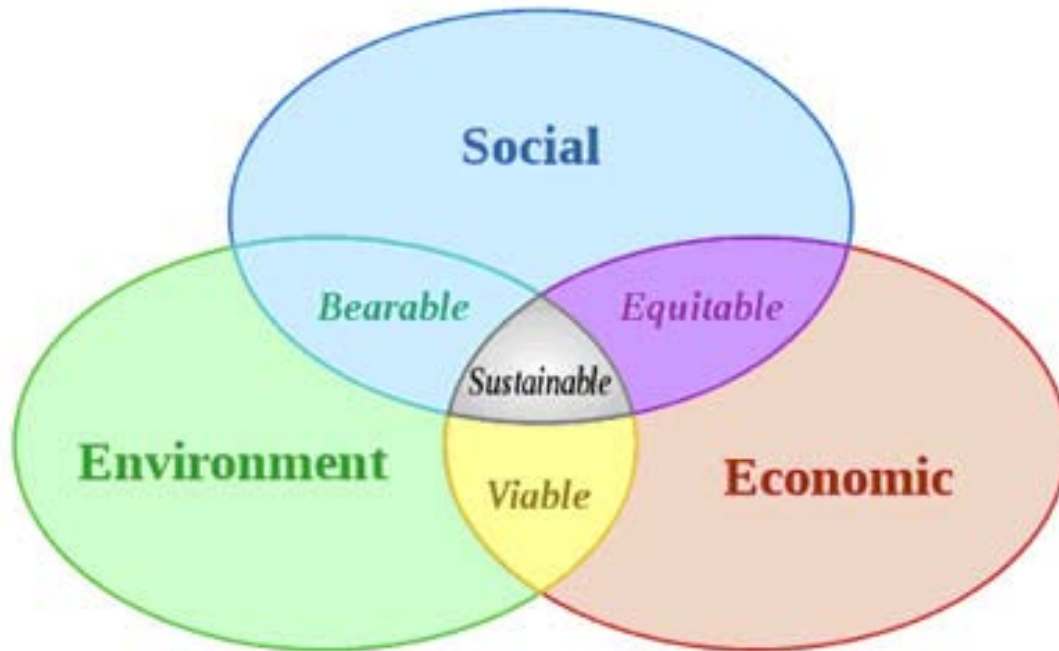


# Managing Vineyards with an Eye Toward the Next Generation

Mitchell Klug

Director, Napa County Resource Conservation District





## Sustainability:

- Expands grower responsibilities
- Willingness to try and to learn something new
- No “recipe book” and No single “right way” to do it
  - A process, not a destination



Napa County's journey with sustainability arguably began in the late 1960's with the nation's first Agricultural Preserve.



1986



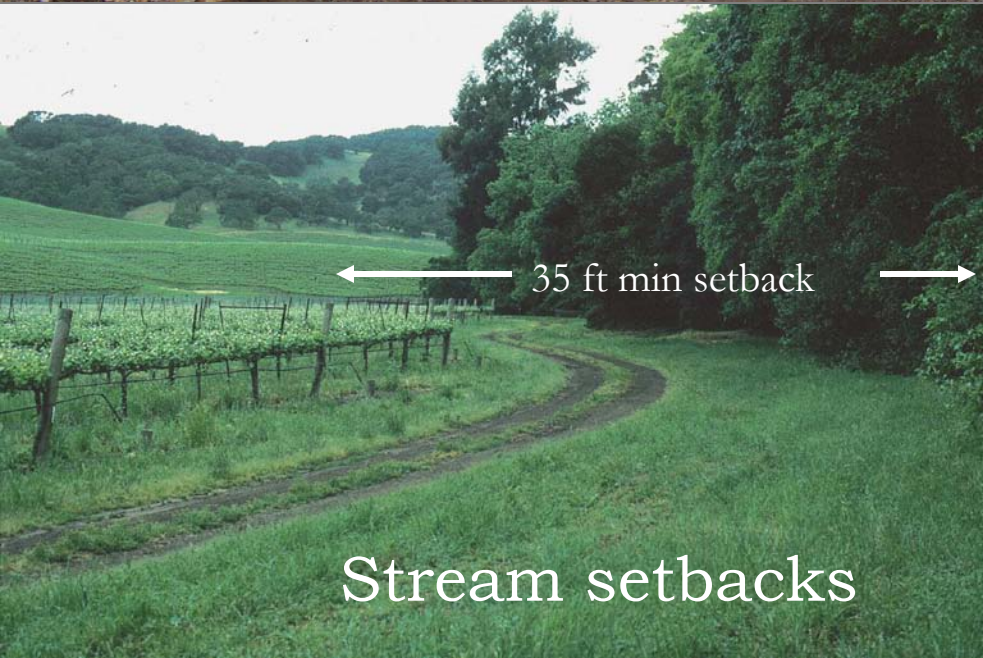
The journey continued in the late 1980's as we learned how (or how not) to farm in the hillsides.

1983



Attention to design

Napa County's  
Conservation  
Regulations establish a  
standard for hillside  
erosion control that  
makes sense for the  
watershed and for  
agricultural industry



← 35 ft min setback →

Stream setbacks



Winterization

**Cover Crops**



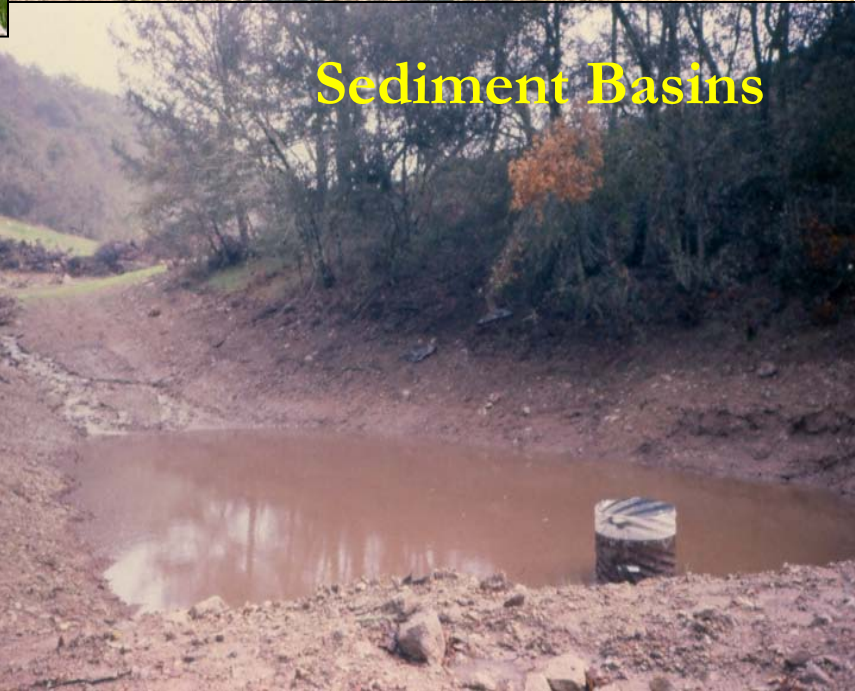
**Drainage**



**Runoff Control**



**Sediment Basins**



# Beyond Erosion Control: Farming In a Watershed



Water Management

A photograph showing two people in a field setting up a weather station. One person is kneeling and adjusting a sensor, while the other stands nearby. The station includes a solar panel and various sensors mounted on a tripod. The background shows a grassy field and hills under a clear blue sky.



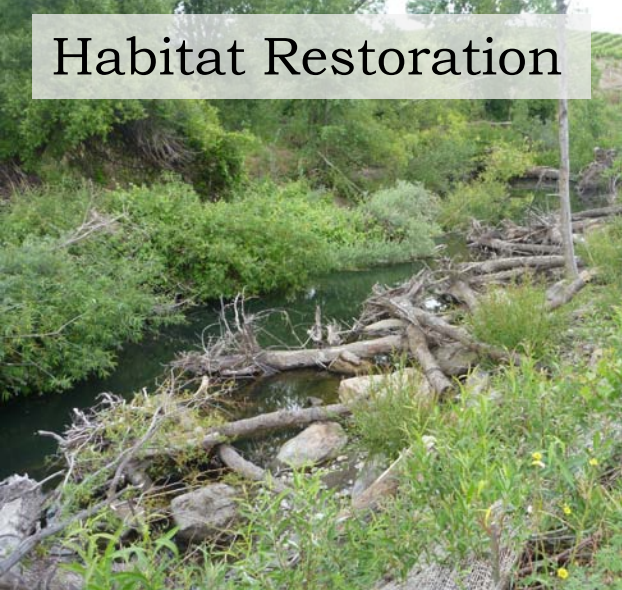
Worker Health & Well-Being

A photograph of a smiling man in a maroon hoodie and black beanie, holding a large metal tray filled with harvested purple grapes above his head. He is standing in a vineyard with other workers visible in the background.




Pest Management

A photograph of a field with tall, dry grasses and yellow wildflowers. The field appears to be a natural or semi-natural area, possibly used for pest management or habitat restoration.




Habitat Restoration

A photograph showing a stream with a large pile of logs and branches in the foreground, used for habitat restoration. The water is clear and surrounded by lush green vegetation.



Biodiversity

An aerial photograph of a landscape with a mix of green fields, forests, and a winding river or stream, illustrating biodiversity.



Preservation

A photograph of a dense forest of tall, green trees, representing a natural area being preserved.

# Biodiversity





# Pest Management



# Water Management





Worker Health &  
Well-Being



# Habitat Restoration





Preservation



# Commitment to Learning



What's next on our journey?

