



The Westside IRWM Plan is being developed by:

- Lake County Watershed Protection District
- Napa County Flood Control and Water Conservation District
- Solano County Water Agency
- Water Resources Association of Yolo County and its 11 member agencies
- Colusa County Resource Conservation District

## Kick-off Meetings

5-7 p.m., Wednesday, January 25  
Ulatis Community Center  
1000 Ulatis Drive, Vacaville

5-7 p.m., Wednesday, February 1  
Hedrick Ag Center  
1962 Hays Lane, Woodland

5-7 p.m., Monday, February 6  
Clearlake City Council Chambers  
14050 Olympic Drive, Clearlake

# Westside Sacramento Integrated Regional Water Management Plan

## Help Identify Water Resource Priorities for Your Region!

Do you live in Yolo, Lake, Colusa, Napa or Solano County?  
Are you concerned about water supply, flood management, stormwater runoff, or the environment in these areas?

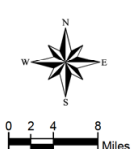
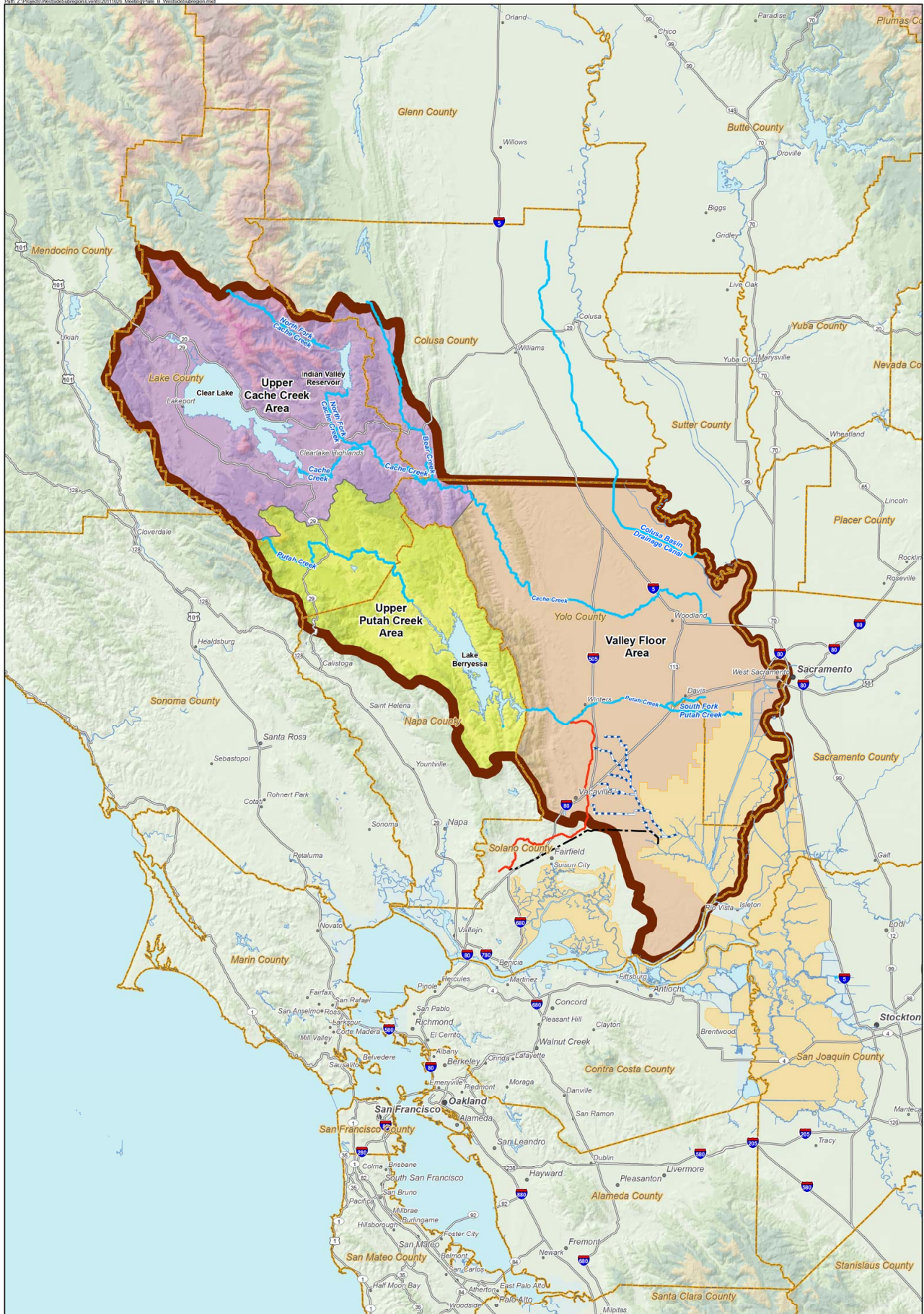
Public agencies spanning the five counties (see sidebar) are partnering to identify and address regional water resources challenges and opportunities within the Cache Creek and Putah Creek watersheds. Some of the key water sources within the planning area include Clear Lake, Lake Berryessa, Indian Valley Reservoir, Putah Creek and Cache Creek.

With input from their communities, these public agencies will develop an Integrated Regional Water Management Plan by late 2012 that describes and addresses:

- Water supply reliability
- Water conservation
- Water quality improvement
- Stormwater management
- Flood management
- Invasive species abatement
- Mercury contamination cleanup
- Wetlands enhancements and protections
- Environmental and habitat improvements and protections

The plan will be designed to promote integrated regional water management and secure funding for regional projects that promote effective and sustainable water resources management.

Don't miss your chance to shape this important plan from the beginning. Please join us at one of the three kick-off meetings where we will introduce the plan development process and scope, and ask for your input and suggestions on how to make this plan successful. We will discuss the topics that will be covered during the planning process and how you can be involved. Each meeting will feature an identical agenda and process. Please attend the meeting that is most convenient for you!



- Legend**
- Westside IRWM Sub-Region
  - California Counties
  - Delta and Suisun Primary Zone
  - Ulatis Flood Control Channel
  - North Bay Aquaduct
  - Putah South Canal
  - Upper Cache Creek Area
  - Upper Putah Creek Area
  - Valley Floor Area

# Westside Sacramento IRWM Sub-Region